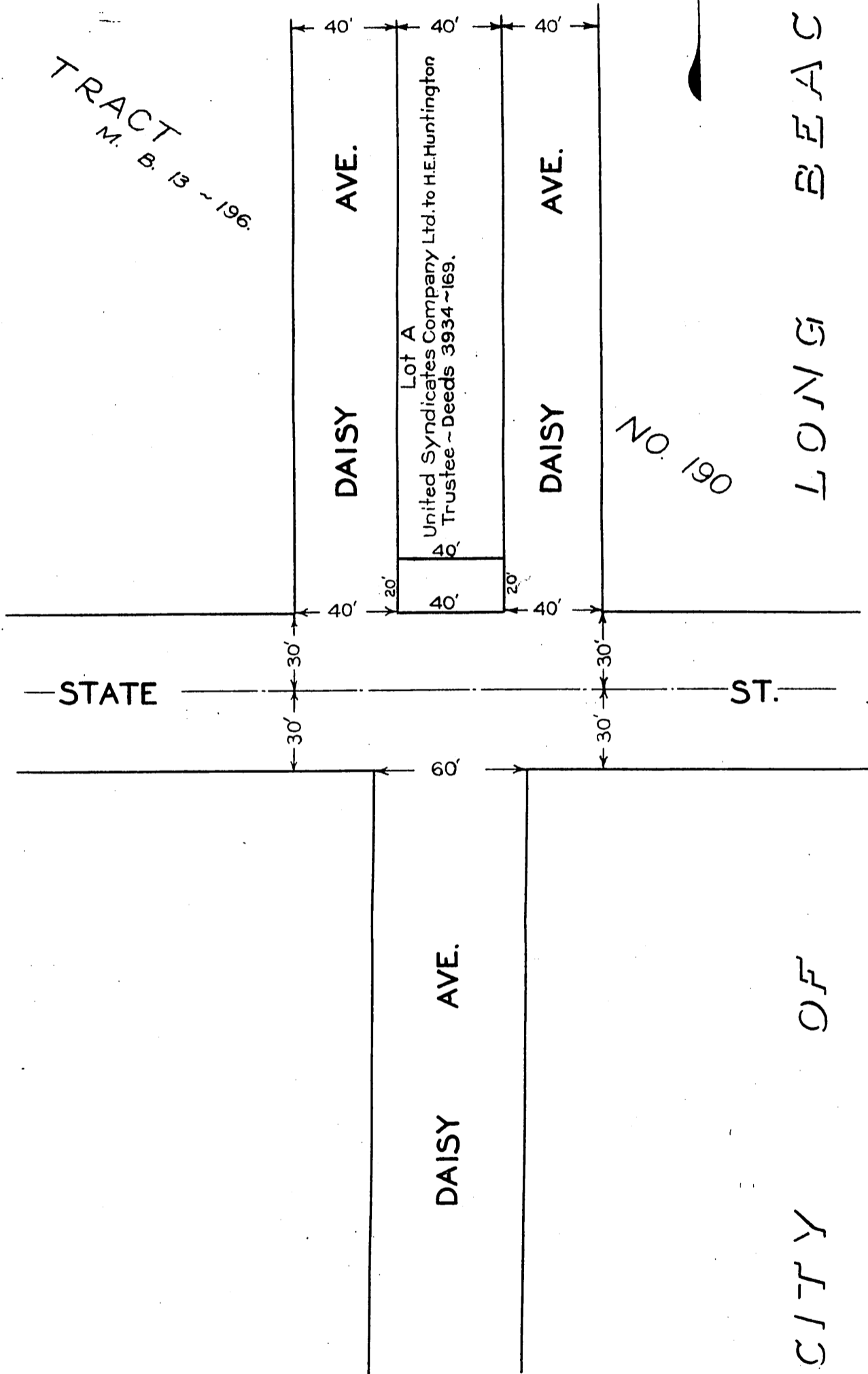


TRACT
M. B. 13 - 196.



State St. chgd. to Pacific Coast Hwy. ~ E:46-105, Ord. C-1903

C.E.K. 1877

Comp. L.C.

Scale: ~ 1" = 50'

INDEX 30
D:99-139

RECORDED - SEPT. 25, 1934.

O.R. 12989