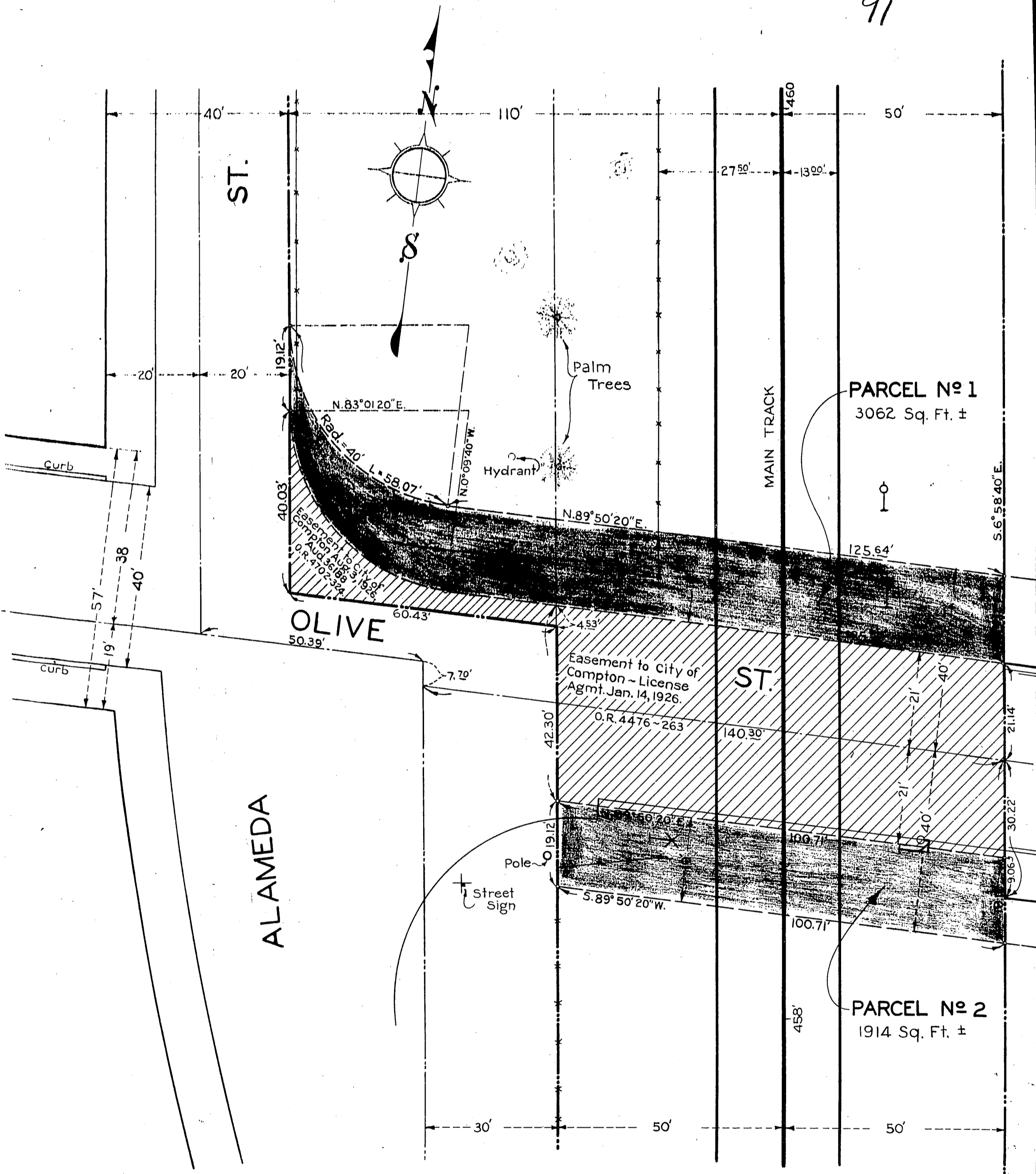


SOUTHERN PACIFIC RAILROAD COMPANY
TO
CITY OF COMPTON

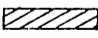
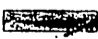
ORM 13147-134

134

91



~ LEGEND ~

-  Hatched ~ Present Easement.
-  Tinted ~ Proposed "

Scale: ~ 1" = 20'

Comp. L.C.

INDEX 26
D: 99-188

RECORDED - NOV. 30. 1934.

O. R. 13147