



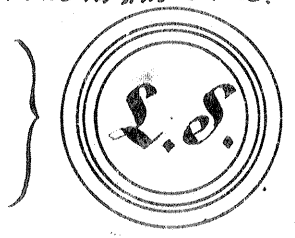
**PLAT**  
 OF THE  
**PLACE called CUATI**  
*finally confirmed to*  
**WICTORIA REID**  
*Surveyed under the instruction from the*  
 U.S. SURVEYOR GENERAL

by  
 Henry Hancock      Dep. Surveyor  
 November      1857

Containing 128 <sup>36</sup>/<sub>100</sub> Acres.  
 — Scale 4chs. to 1in. —

*The Field Notes of the "Huerta de Cuati" and from which this Plat has been made out,  
 have been examined and approved and are on file in this Office.*

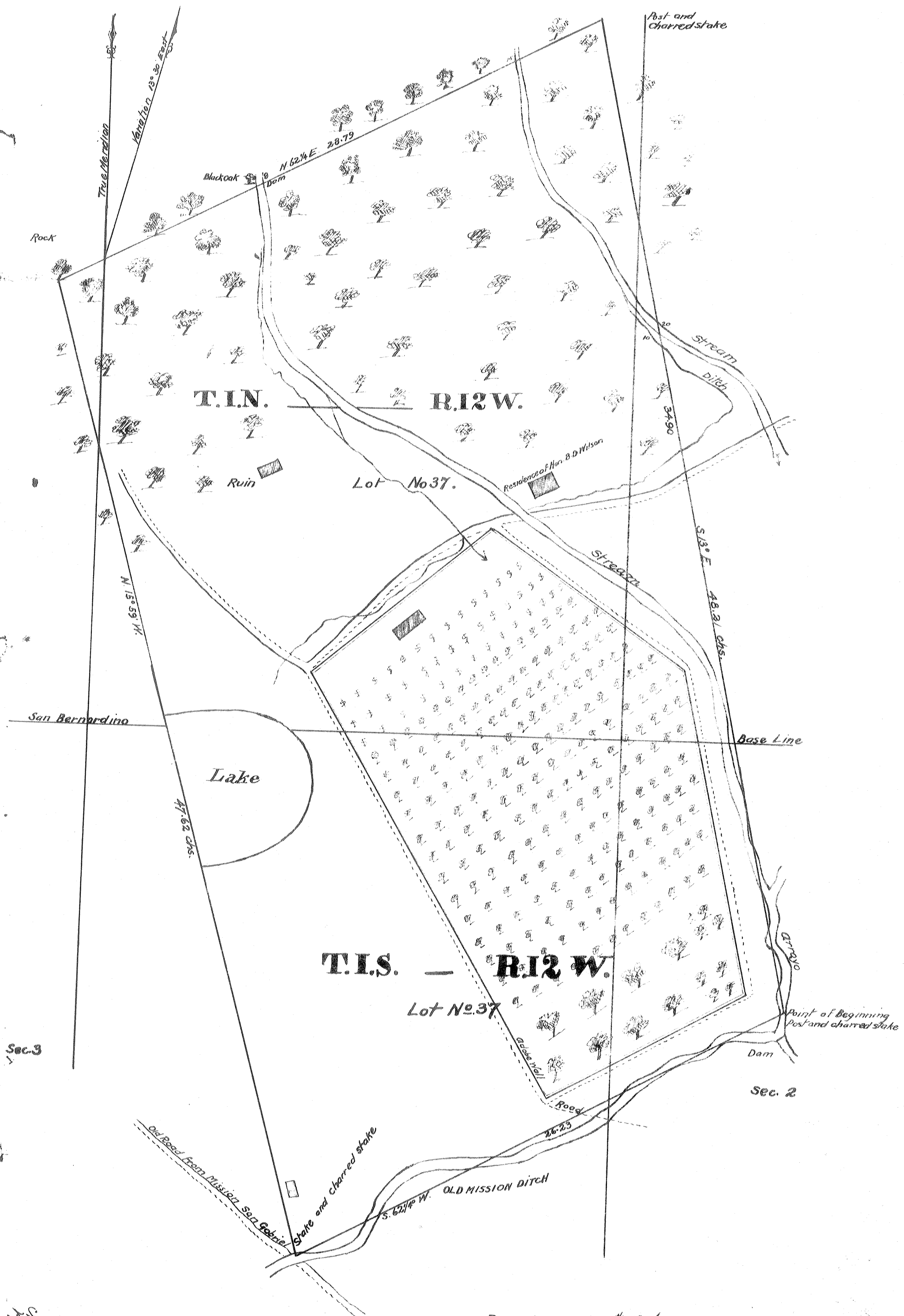
U.S. Surveyor General's Office  
 San Francisco, California, June 30<sup>th</sup> 1858



J.W. Mandeville  
 U.S. Survey Genl. Cal.

*Compd  
 C.W.M.*

P-2-61



Sec. 3

Sec. 2

Recorded Sept. 13<sup>th</sup> 1876  
at request of J. DeBarth Shore.

Compiled  
C. A. W.

PATENTS 2

P-2-62

2