



PLAT OF A TRACT OF LAND

finally confirmed to

JOSE LEDESMA

SURVEYED UNDER INSTRUCTIONS FROM THE
U.S. SURVEYOR GENERAL

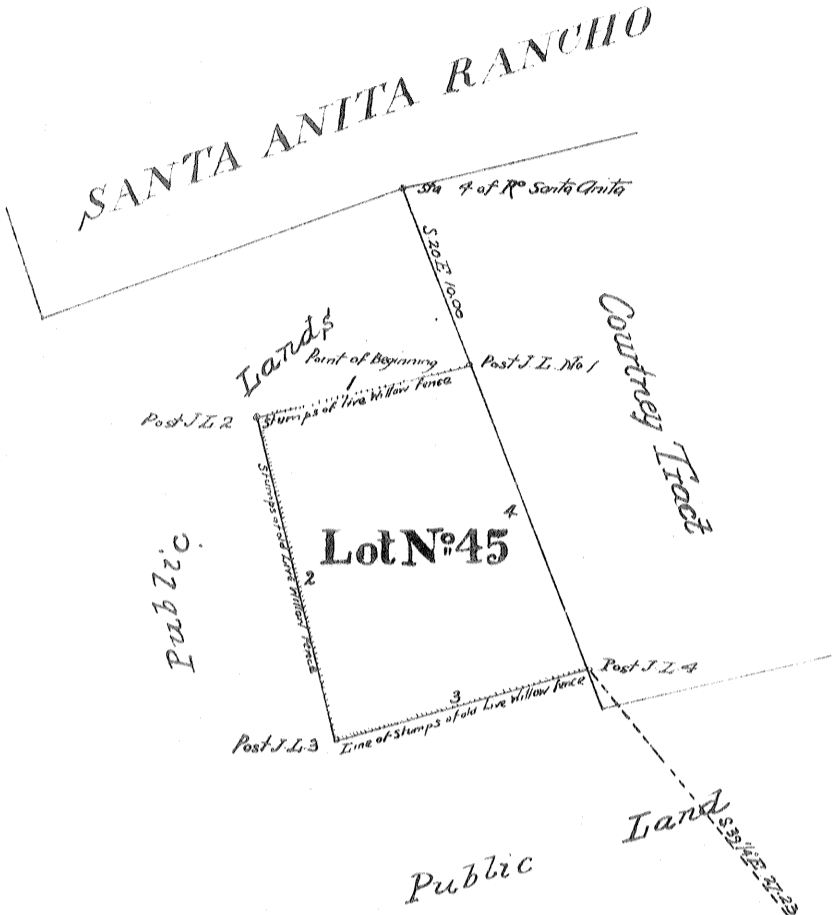
by

Wm P. Reynolds, Dep. Surv.

January 1869.

Containing 22³/₁₀₀ Acres

Scale 10 Chs to 1 Inch Variation 14°40' East.



Boundaries		
No	Course	Dist.
1	S 76 3/4 W	11.75
2	N 12 1/2 E	17.50
3	N 72 1/4 W	14.00
4	W 20 W	17.10

T. 1 N. R. 12 W.

T. 1 N. R. 11 W.

San Bernardino Base Line

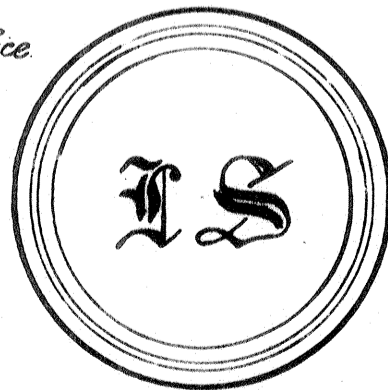
T. 1 S. R. 12 W.

T. 1 S. R. 11 W.

Certificate of Publication:-
Sherman Day
U.S. Surv. Genl. Cal.

Field Notes approved July 23rd 1870
Sherman Day
San Francisco, Cal. U.S. Surv. Genl. Cal.

approved, June 20th 1871
Willis Drummond
Commissioner of the General Land Office.



Recorded Jan. 9th 1871, at 11²⁵ a.m.
at request of L. J. Rose

Copy
sent to