

For Puddingstone Reservoir See C.S. 8655
 For Purhiani Corina Road D:58-33, or 4753-28.

North line of Rancho C.S. 9242

Completed
 C.W.M.

Boundaries		No	Course	Dist
		1	S. 59 1/4 W.	27.00
		2	N. 79 3/4 W.	171.14
		3	N. 53 W.	203.00
		4	N. 65 1/4 W.	67.00
		5	N. 23 W.	272.06
		6	N. 61.53 E.	282.81
		7	S. 68 1/4 E.	414.27
		8	S. 20 W.	157.00
		9	S. 16 1/2 W.	110.13
		10	S. 8 W.	89.00

Approved Jan. 20th 1875
 S.S. Burdett
 Commissioner of the General Land Office

PLAT OF THE
 RANCHO SAN JOSE
 finally confirmed to
 Dalton Palomares and Vejar
 surveyed under instructions from the
 U.S. SURVEYOR GENERAL

BY
 G.H. THOMPSON, DEPUTY SURVEYOR
 Aug. 1868
 and

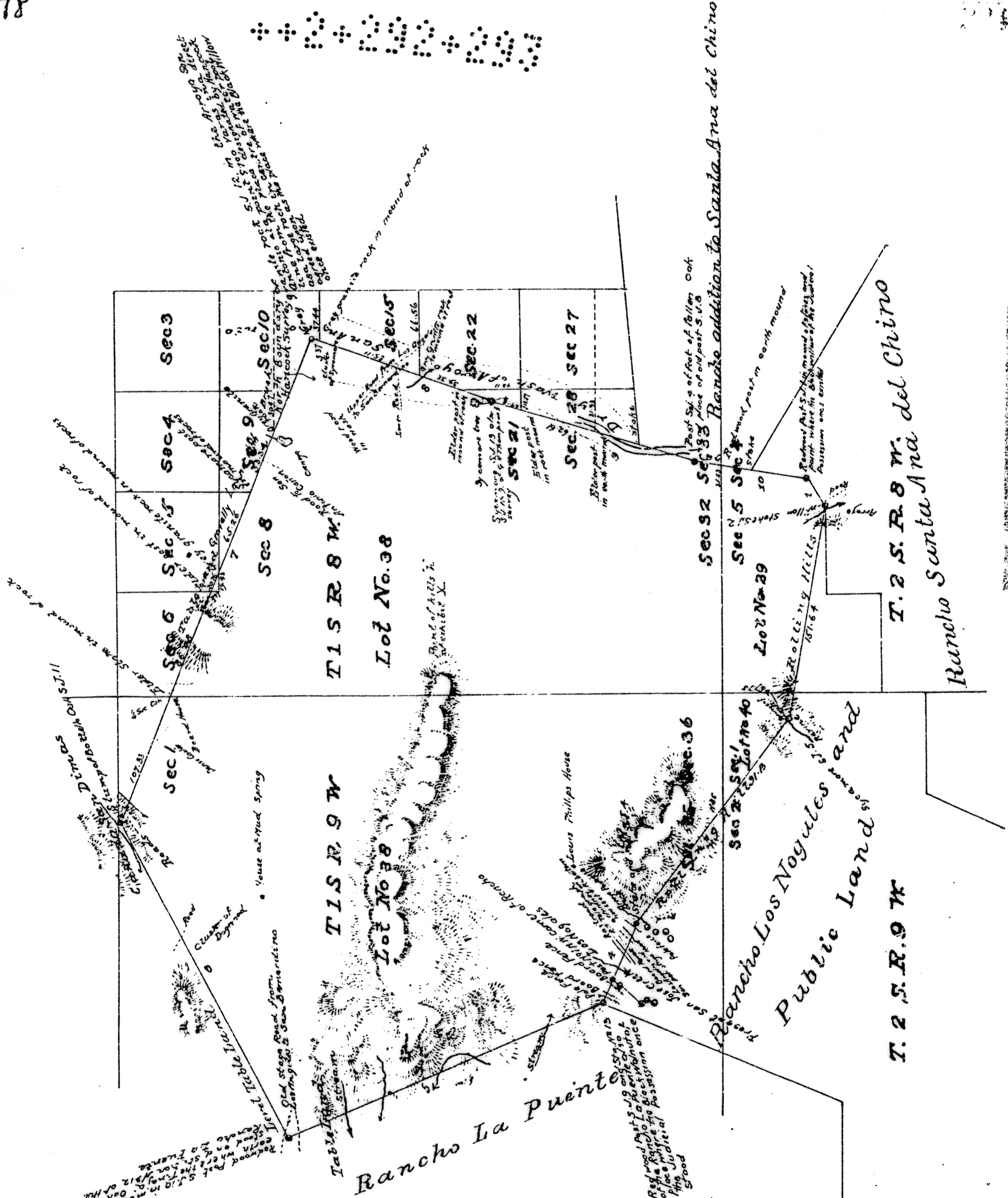
W.P. REYNOLDS, DEPUTY SURVEYOR
 Feb. 1874

containing 22,340 1/2 acres
 scale, 40chs. to 1inch variation 14° 15' to 14° 25' E.

Field Notes approved May 22nd 1874
 Jas. T. Stratton
 U.S. Surv Genl. Cal.
 San Francisco Cal.

Recorded Aug. 13th 1877, at 4²³ P.M.
 at request of Francisco Palomares.

PATENTS 24



COUNTY ENGINEERS COPY