



# PLAT OF THE RANCHO LAS CIENEGAS

finally confirmed to  
Juanario Abila et al  
surveyed under instructions from the  
U.S. SURVEYOR GENERAL  
by  
Henry Hancock, Dep. Sur<sup>r</sup>  
Sept. 1858

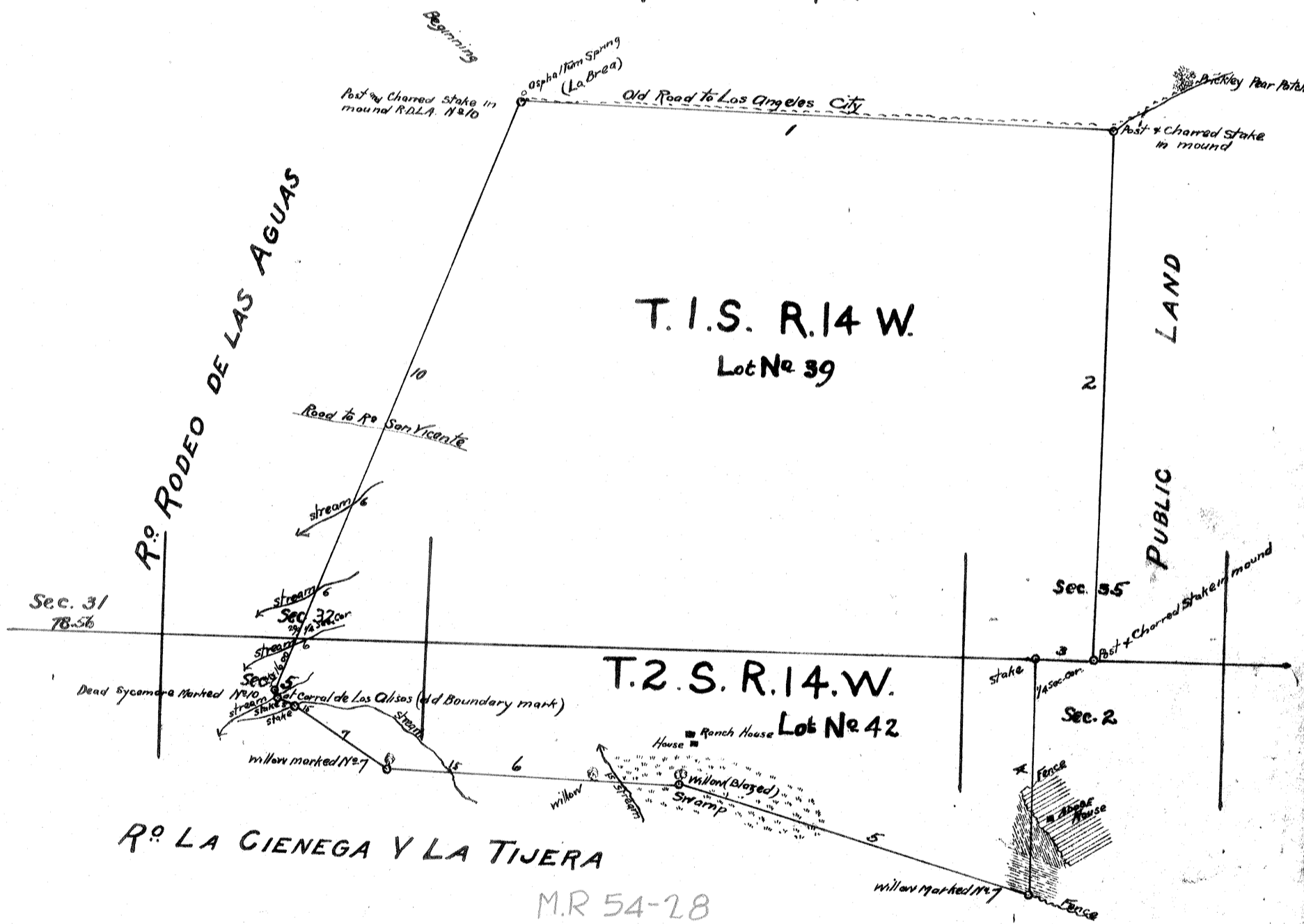
Variation 13°30' East

Containing 44,395<sup>5</sup>/<sub>100</sub> acres.

Scale 40chs. to 1inch.

RF 333

R<sup>o</sup> LA BREA



R<sup>o</sup> LA CIENEGA Y LA TIJERA

M.R 54-28

Certificate of Publication  
Sherman Day  
U.S. Surv. Genl. Cal.

Certificate of Publication of Notice of Approval  
J.W. Manderille  
U.S. Surv. Genl. Cal.

Field Notes approved Jan. 4<sup>th</sup> 1860  
San Francisco Cal. J.W. Manderille  
U.S. Surv. Genl. Cal.

approved June 15<sup>th</sup> 1871  
Willis Drummond

Commissioner of the General Land Office.

Boundaries.		
N <sup>o</sup>	Course	Distance
1	S. 88 1/2° E	179.00
2	South	160.00
3	West	15.00
4	South	72.00
5	N 74 1/2° W	111.00
6	N 89° W	89.00
7	N 57° W	33.50
8	N. 65° W.	5.00
9	N. 40 1/2° W.	2.00
10	N. 20 1/2° E	192.38
Aggregate		858.88 = 43 miles 58.88 chs.

A full true and correct copy of the original Plat  
on file in this Office  
Sherman Day  
San Francisco Cal. U.S. Surv. Genl. Cal.

Recorded May 18<sup>th</sup> 1878 at 1<sup>o</sup> PM  
at request of W. R. Riggle

PATENTS 2  
K

Completed  
Calif.

P-2-411