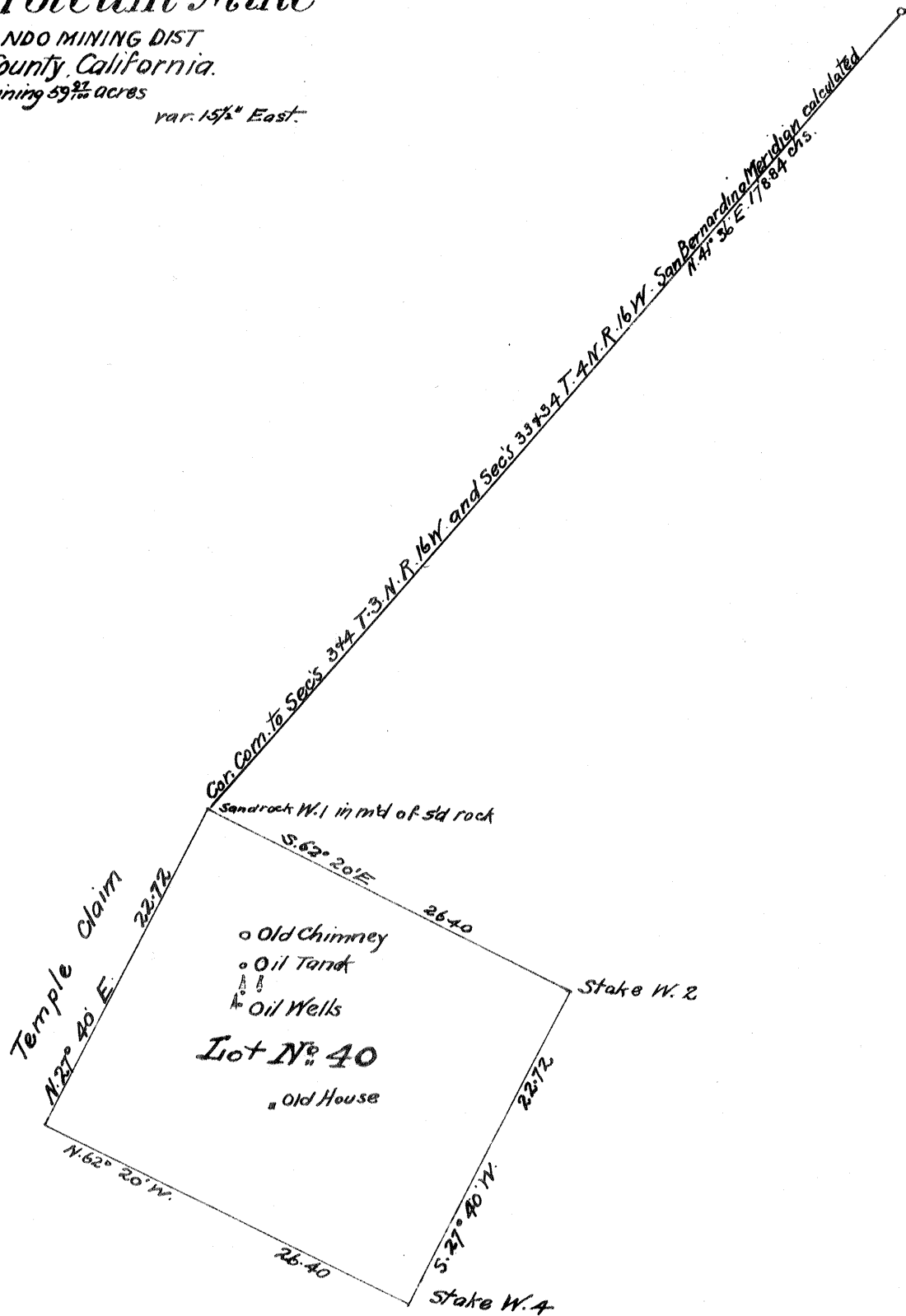


PLAT
 OF THE CLAIM OF
S. B. CASWELL
 upon the
Towsley Petroleum Mine
 SAN FERNANDO MINING DIST
 Los Angeles County, California.
 containing 59³/₄ acres
 scale rocks to 1 inch var. 15¹/₂" East.

T. 3. N. R. 16 W.
 San Bernardino Meridian

Stake W. 3 in mid of rock



Recorded Sept. 12th 1879. at 10³/₄ A.M.

at request of C. J. Ellis

Compiled
 C. J. Ellis

P-2-478