



PLAT
of the Rancho
EL ESCORPION
finally confirmed to

URBANO ORDON, MANUEL and JOAQUIN
Romero (Indians)
surveyed under instructions from the

U.S. SURVEYOR GENERAL
BY

G.H. THOMPSON, DEP. SUR.

aug. 1870

containing 1109 ¹⁵/₁₀₀ acres.

scale 20 chs. to 1 inch

variation 14° 41' E.

Certificate of Publication:-

J. R. Harderbergh

U.S. Surv. Genl. Cal.

Field Notes Approved Jan 12th 1872

San Francisco Cal.

J. R. Harderbergh

U.S. Surv. Genl. Cal.

Boundaries		
No	Course	Dist.
1	S. 84° E	105.34
2	N 6° E	105.34
3	N 84° W	105.34
4	S. 6° W	105.34

Approved Dec 11th 1876

J. A. Williams

Commissioner of the General Land Office

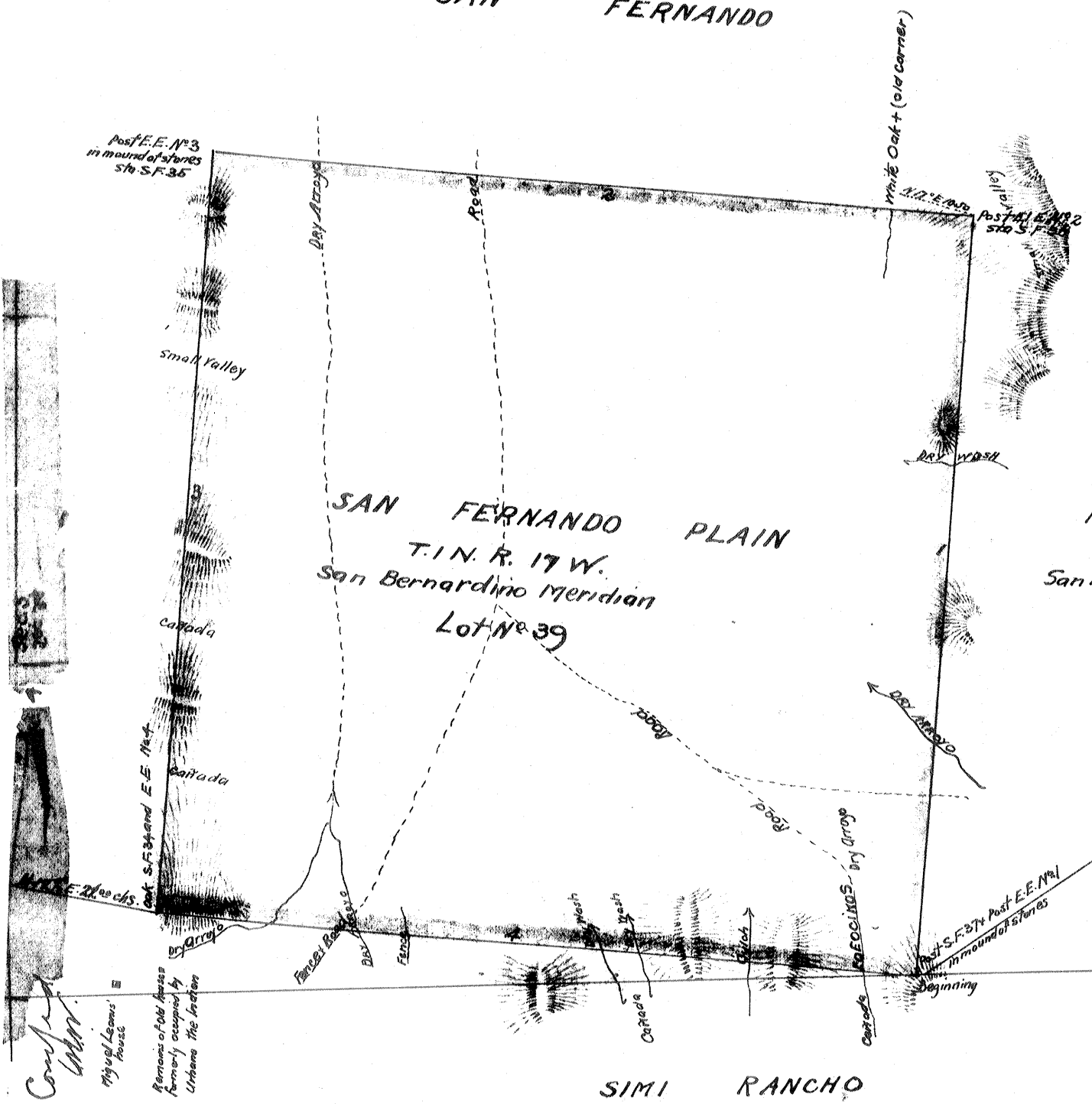
EX-MISSION SAN FERNANDO

SAN FERNANDO PLAIN
T. 1 N. R. 17 W.
San Bernardino Meridian
Lot No. 39

A full, true and correct copy of the original
plat on file in this office.

H. G. Rollins
U.S. Surv. Genl. Cal.

San Francisco Cal
March 24th 1876



Recorded June 16th 1880, at 2⁴² PM.
at request of Miguel Leonis

P-2-518