

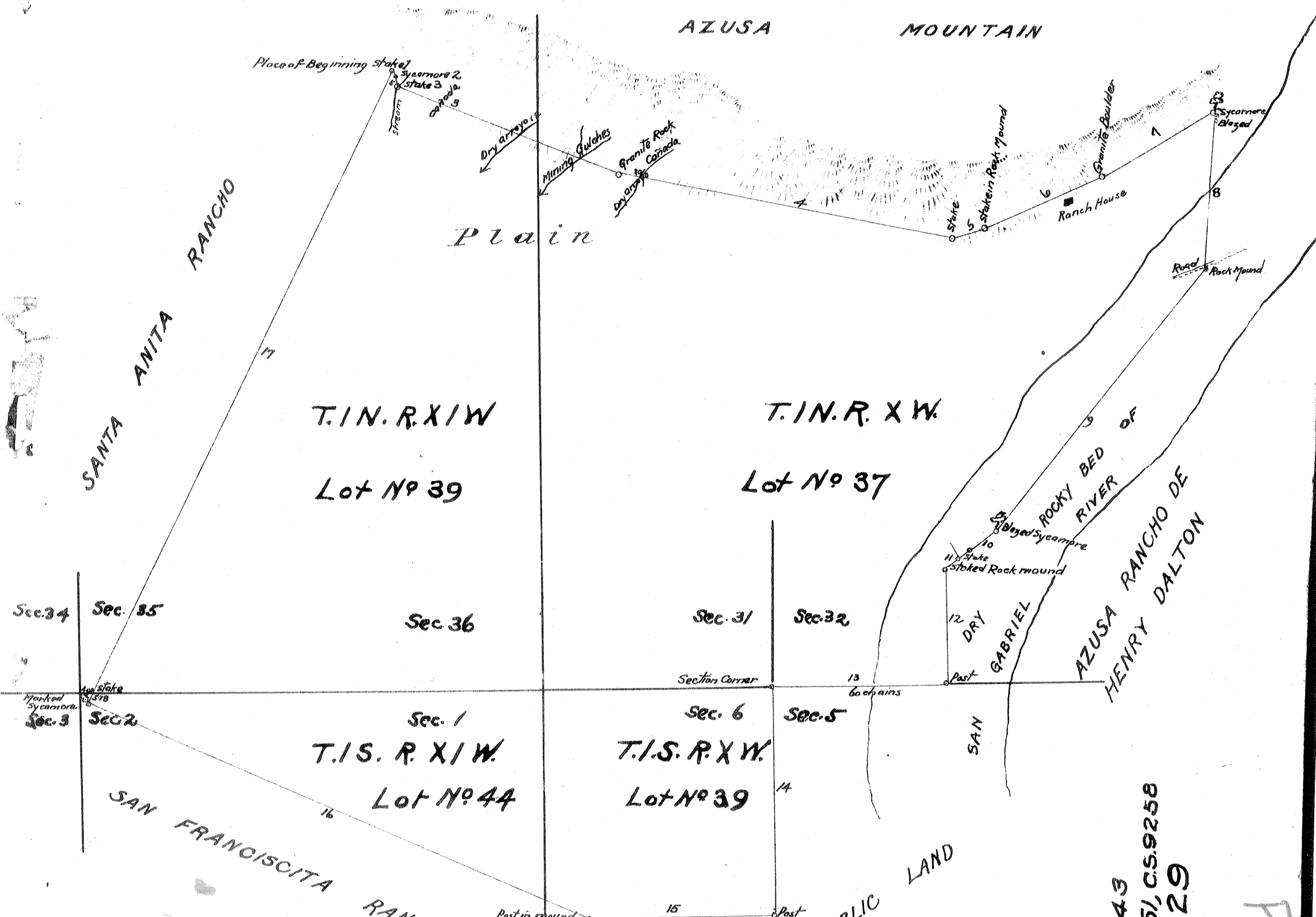


PLAT OF THE AZUSA RANCHO

FINALLY CONFIRMED TO
ANDREAS DUARTE
Surveyed under the instructions of the
U.S. SURVEYOR GENERAL

Approved June 6th 1878
J. Q. Williamson
Commissioner of the General Land Office.

by
Henry Hancock, Dep. Sur.
Sept. 1858
Containing 6595 ⁶²/₁₀₀ acres
Scale 40chs. To 1inch Variation 13°30'E.



Certificate of Publication of
Notice of Approval of Plat
J. W. Manderville
U.S. Surv. Gen'l. Cal.

A full, true and correct copy of the original Plat on file in this office.
H. G. Rollins
U.S. Surv. Gen'l. Cal.
San Francisco, Cal
March 23rd 1876.

Field Notes approved Jan. 4th 1860
J. W. Manderville
U.S. Surv. Gen'l. Cal.
San Francisco, Cal.

Certificate of Publication
J. T. Stratton
U.S. Surv. Gen'l. Cal.
San Francisco Cal.
Jan. 14th 1876.

(Recorded Oct. 27th 1880, at 3⁴⁰ P.M.)
at request of Eugene Meyer.

FIELD NOTES		
No	Courses	Distance
1	S. 15° E	3.64
2	" 2° "	3.50
3	" 68 1/2 "	84.22
4	" 79 1/2 "	119.00
5	N. 75 "	11.00
6	" 68 1/2 "	45.00
7	" 58 1/4 "	46.10
8	S. 6 W	57.6a
9	" 39 "	115.00
10	" 58 1/2 "	15.50
11	" 42 "	7.00
12	South	40.00
13	West	60.00
14	South	80.00
15	West	85.00
16	N. 67° W	190.00
17	" 26 1/4 E	246.25
		1188.81
14 miles 68 chs. 81 4/5.		

North line of Rancho C.S. 9243
" " " " C.S. 9251, C.S. 9258
Rancho bdy's - C.S. 9329

P-2-560-561