



PLAT
 OF THE TRACT CALLED
SAN PASCUAL
 finally Confirmed to
B.D. WILSON
 surveyed under instructions from the
 U.S. SURVEYOR GENERAL
 BY
 HENRY HANCOCK, DEP. SUR.
 Nov. 1867
 containing 708 ³/₁₀₀ acres
 scale 20chs. to 1inch variation 14 1/4° E. ast.

Certificate of Publication:
 L. Upson
 U.S. Surv. Genl. Cal.

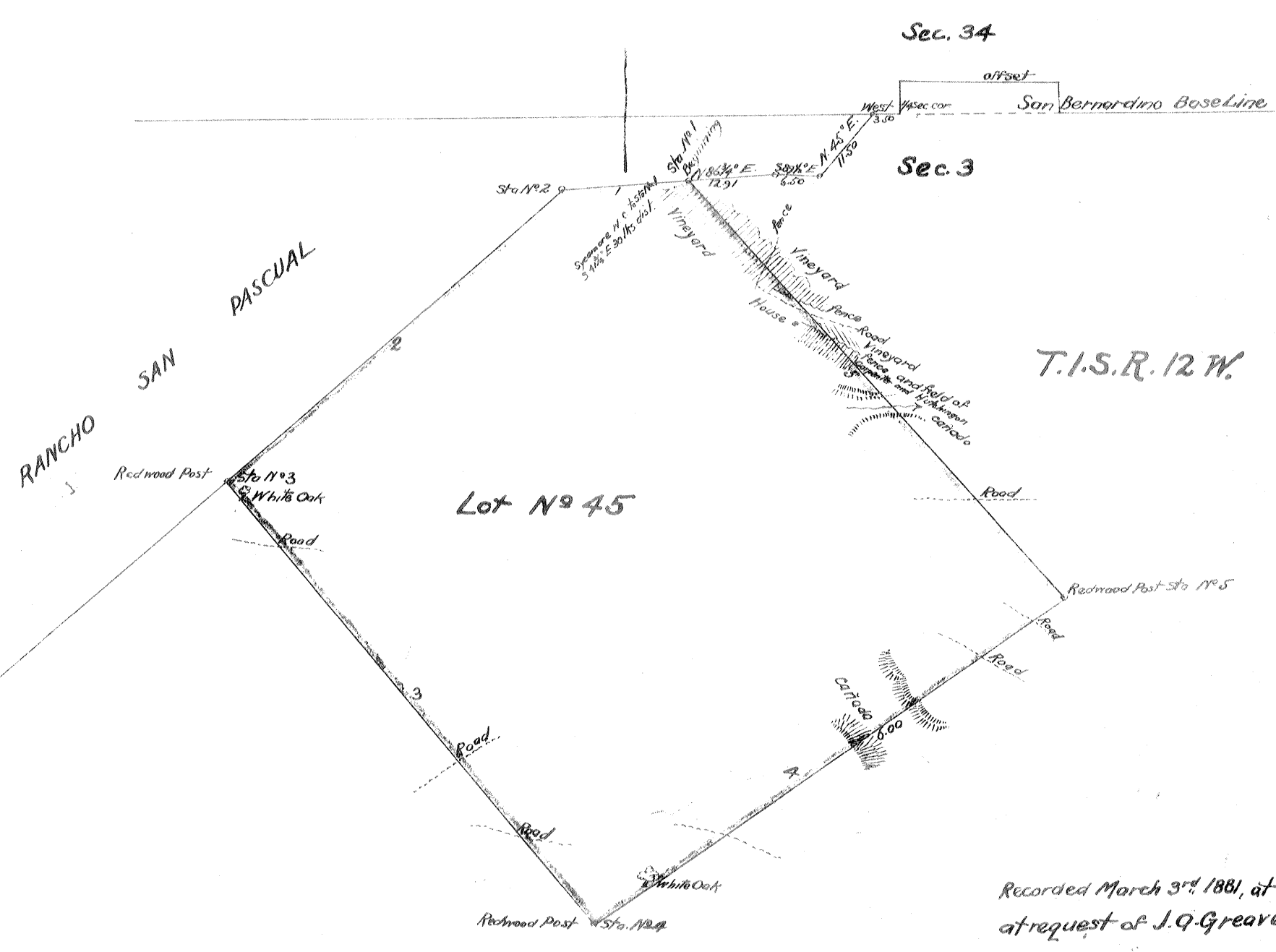
SEAL

Boundaries

N ^o	Course	Dist
1	S. 86 3/4° W.	78.40
2	S. 49 3/4° W.	65.07
3	S. 40 1/2° E.	83.47
4	N. 55 3/4° E.	83.47
5	N. 41 3/4° W.	82.00

approved Feb. 12th 1881
 C.W. Holcomb

Acting Commissioner of the General Land Office.



Recorded March 3rd 1881, at 9³⁵ AM.
 at request of J. Q. Greaves.

Completed
 1881

P-2-602