

PLAT of the TRACT CALLED CAHUENGA

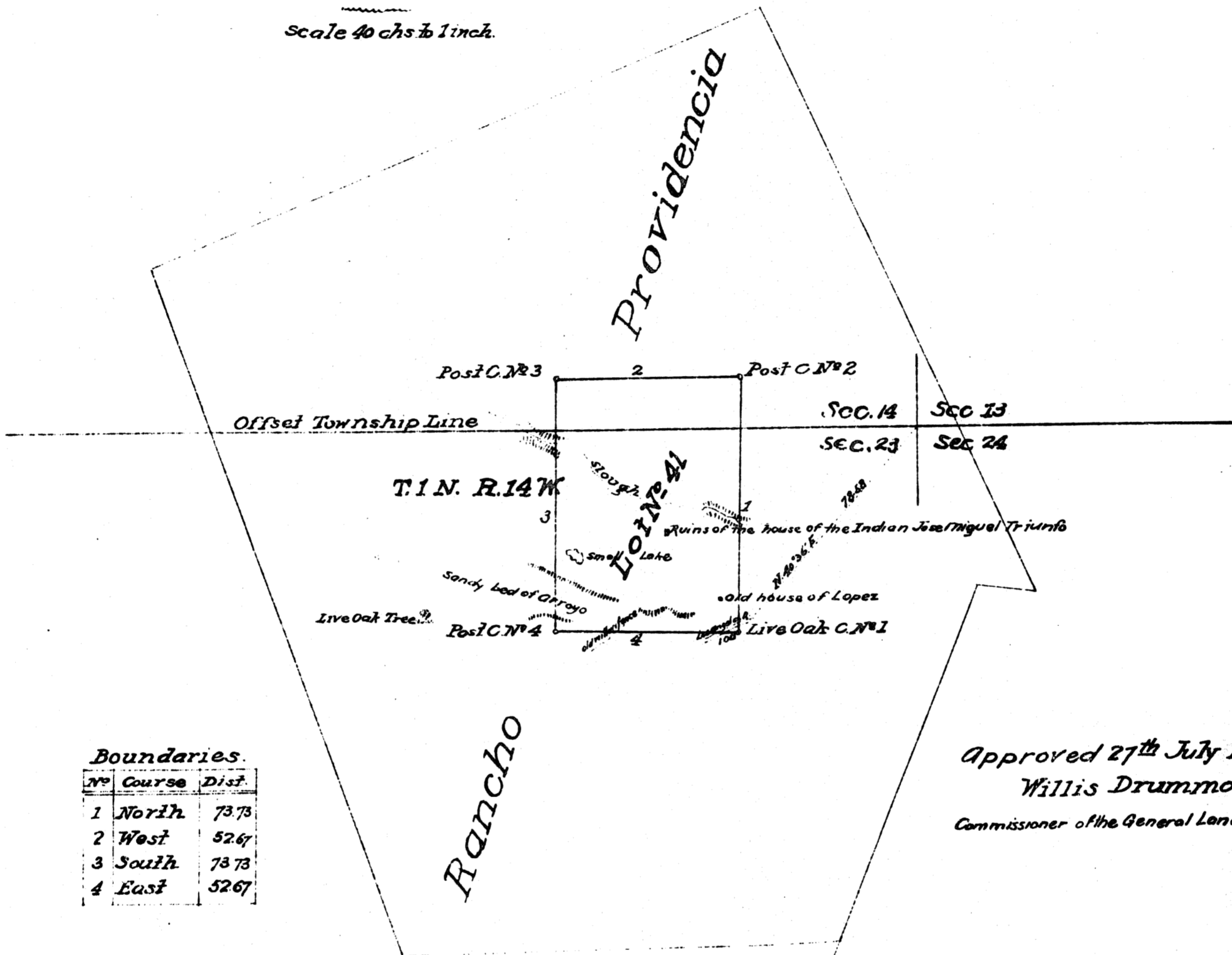
finally confirmed to
D. W. Alexander et al
Surveyed under instructions from the
U.S. Surveyor General

by
G. H. Thompson, Dep. Sur.

September 1868

Containing 388²⁶/₁₀₀ Acres

Scale 40 chs to 1 inch.



Boundaries.

N ^o	Course	Dist.
1	North	73.73
2	West	52.67
3	South	73.73
4	East	52.67

Approved 27th July 1872
Willis Drummond
Commissioner of the General Land Office

Field Notes approved Dec. 22nd 1871
I. R. Hardenbergh
San Francisco, Cal. U.S. Surv. Gen'l. Cal.

L.S.

Certificate of Publication:-
I. R. Hardenbergh
U.S. Surv. Gen'l. Cal.

(Recorded Dec. 16th 1886, at 9^h A.M.)
at request of J. Q. Graves.

