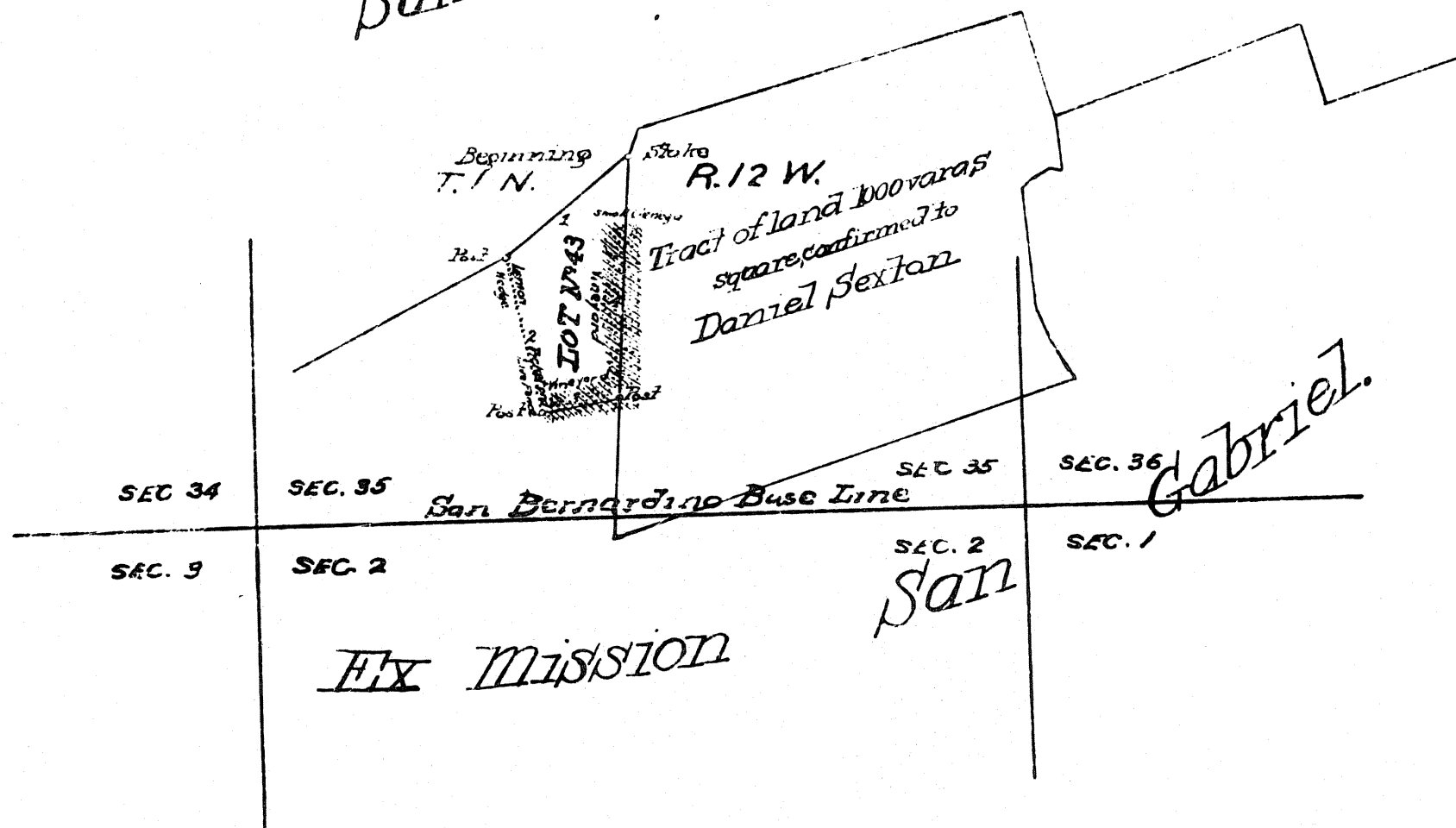


422233

Santa Anita Rancho



PLAT
of the
PROSPERO TRACT OF LAND
near San Gabriel Mission in Los Angeles County
finally confirmed to
RAFAELA VALENZUELA et al
Surveyed under instructions from the
U. S. Surveyor General
by
G. H. Thompson Dep. Sur.
September 1868
Containing 23⁶⁸/₁₀₀ Acres
Scale 20 chs. to 1 inch
Magnetic Variation at 14° 15' East.

Certificate of Publication:
Sherman Day
U. Surv. Gen'l. Cal.

L.S.

Field Notes approved Dec. 13th 1870
Sherman Day
San Francisco, Cal. U.S. Surv. Gen'l. Cal.

Approved Dec 22nd 1875
S.S. Burdett
Commissioner of the General Land Office.

Boundaries		
No	Course	Distance
1	S 51 ¹ / ₂ ° W	17.25
2	S 10 ¹ / ₂ ° E	17.00
3	N 79 ¹ / ₂ ° E	8.50
4	N 4 ¹ / ₂ ° E	26.00

(Recorded March 1st 1889, at 2nd P.M.)
at request of J. De Barth Shorb.