

PLAT

of the Rancho

POTRERO DE FELIPI LUGO

finally confirmed to

George Morillo and Maria V. Ramero

Surveyed under instructions from the

U. S. SURVEYOR GENERAL

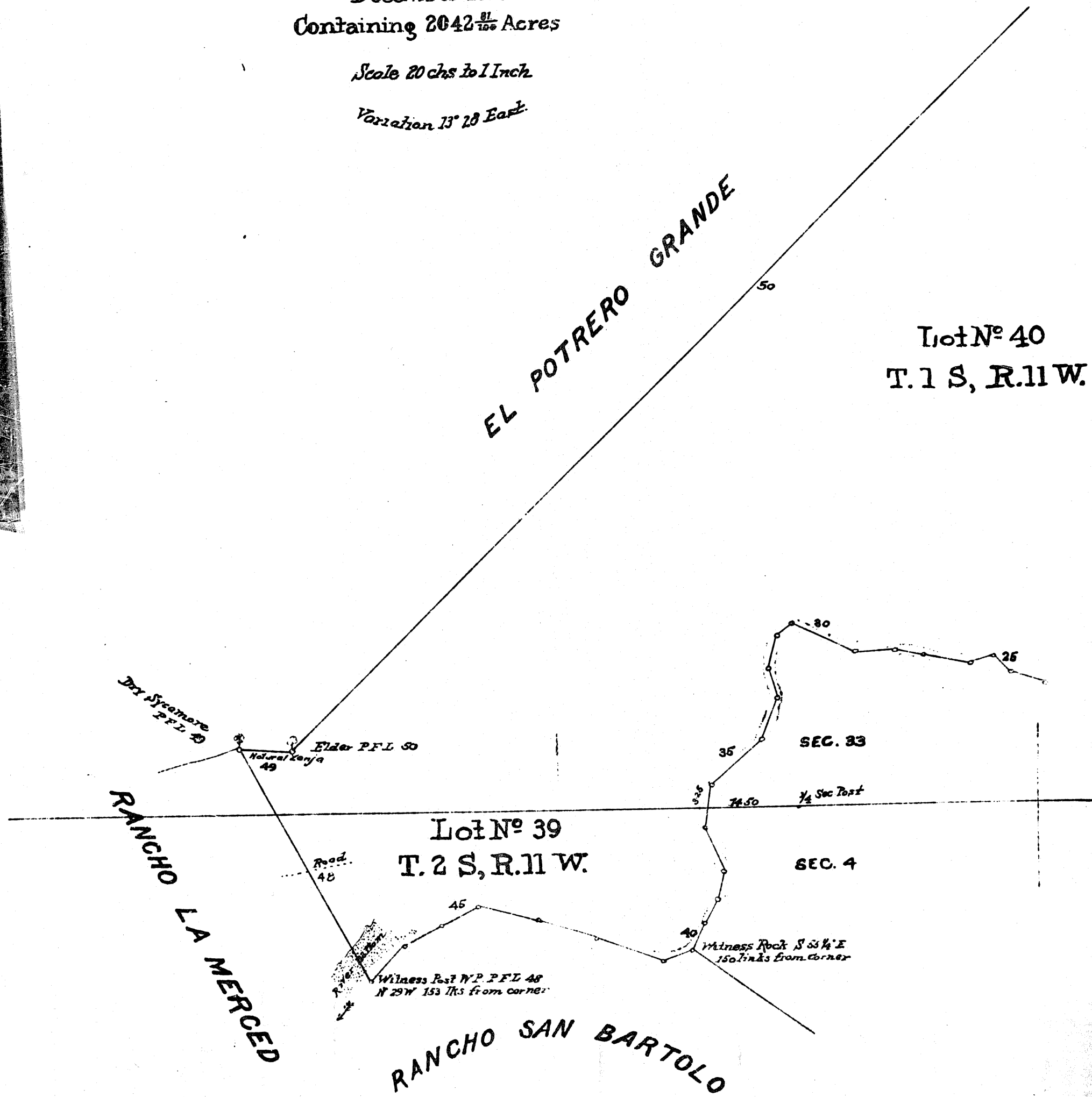
by
Henry Hancock, Dep. Sur.

December 1838

Containing 2042 $\frac{1}{2}$ Acres

Scale 20 chs to 1 Inch

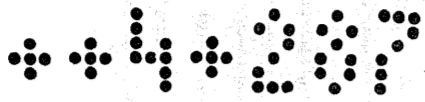
Variation 13° 28' East



Approved June 15th 1871

Willis Drummond

Commissioner of the General Land Office.



Lands of the Mission
SAN GABRIEL

SAN FRANCISCO

Pile of Rocks, Point of Beginning
(Old boundary mark)

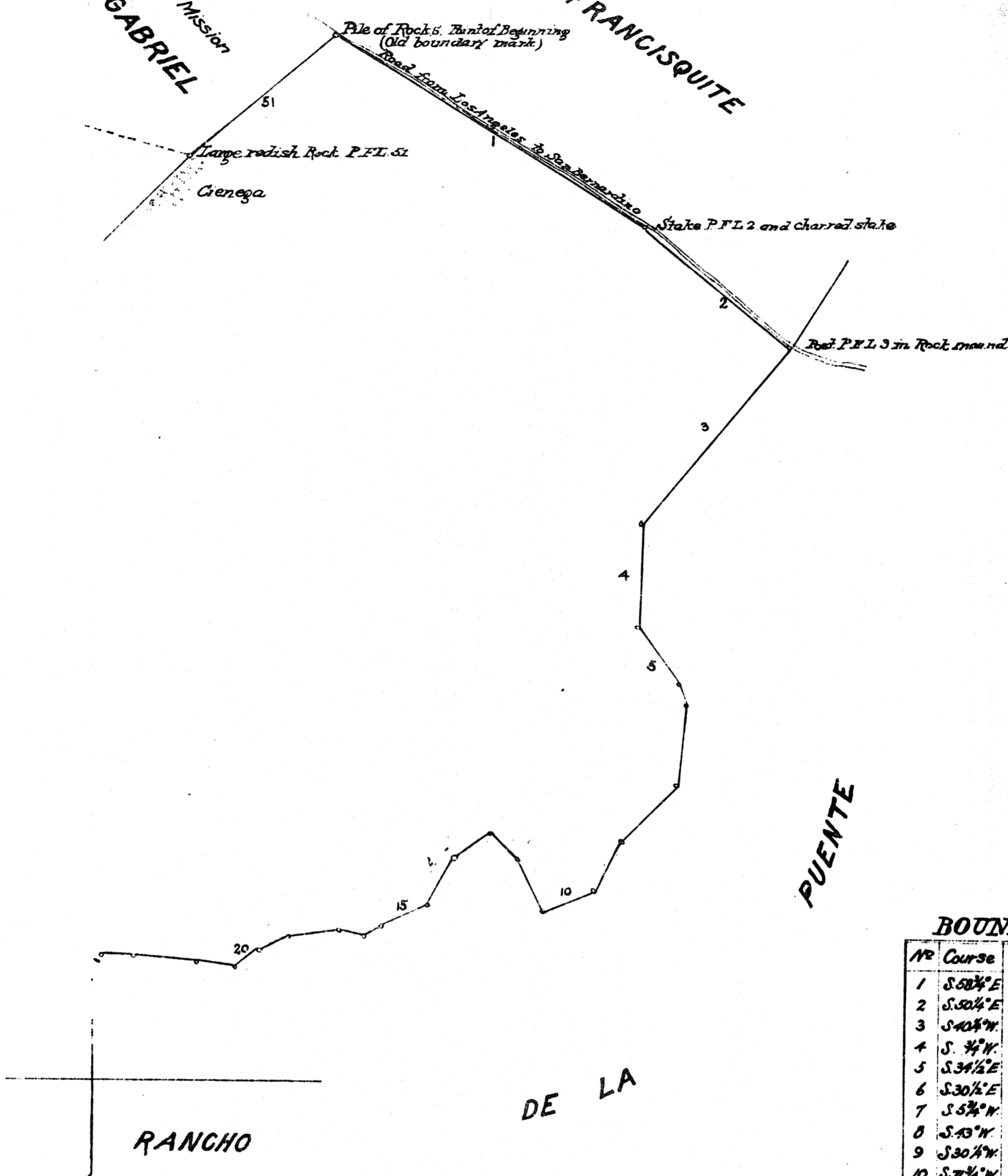
Road from Los Angeles to San Francisco

Large redish Rock P.F.L. 51

Greenega

State P.F.L. 2 and Charred stake

Rod P.F.L. 3 in Rock, iron rod



BOUNDARIES.

No	Course	Dist	No	Course	Dist
1	S 50 1/2° E	33.26	27	N 77 1/2° W	8.00
2	S 50 1/2° E	30.00	28	N 77 1/2° W	5.00
3	S 40 1/2° W	36.00	29	S 88 1/2° W	7.00
4	S 7 1/2° W	16.00	30	N 60 1/2° W	12.00
5	S 34 1/2° E	11.00	31	S 42 1/2° W	3.00
6	S 30 1/2° E	3.60	32	S 9 1/2° W	6.00
7	S 5 1/2° W	13.00	33	S 10° E	5.00
8	S 43° W	13.00	34	S 17 1/2° W	7.00
9	S 30 1/2° W	9.00	35	S 16 1/2° W	12.00
10	S 7 1/2° W	8.00	36	S 9° W	7.00
11	N 27 1/2° W	9.00	37	S 25° E	7.00
12	N 66 1/2° W	5.00	38	S 8 1/2° W	5.00
13	S 66 1/2° W	6.00	39	S 33 1/2° W	5.00
14	S 29 1/2° W	8.00	40	S 20 1/2° W	5.00
15	S 67 1/2° W	8.00	41	S 74° W	5.00
16	S 68 1/2° W	3.00	42	N 70 1/2° W	12.00
17	N 00 1/2° W	3.50	43	N 70 1/2° W	10.00
18	S 84 1/2° W	8.00	44	N 75 1/2° W	10.00
19	S 69 1/2° W	5.00	45	S 62 1/2° W	7.00
20	S 51° W	5.00	46	S 63° W	7.00
21	N 75° W	6.00	47	S 64 1/2° W	8.33
22	N 86 1/2° W	10.00	48	N 29° W	15.00
23	N 86 1/2° W	5.00	49	S 85 1/2° E	8.81
24	N 68 1/2° W	6.00	50	N 43 1/2° E	13.50
25	N 48° W	4.00	51	N 68 1/2° E	30.00
26	S 64 1/2° W	4.00			
		2882.6			288.52

Aggregate of Exterior Boundaries 7239
or 3 miles 3 cts. 30 Links.

Field Notes approved June 3rd 1859
San Francisco, Calo. J.W. Mandeville
U.S. Surr. Gen'l, Calo.



(Recorded Aug 19th 1889, at 2³⁰ P.M.
at request of F. Wells, Guthrie & Lee.)