

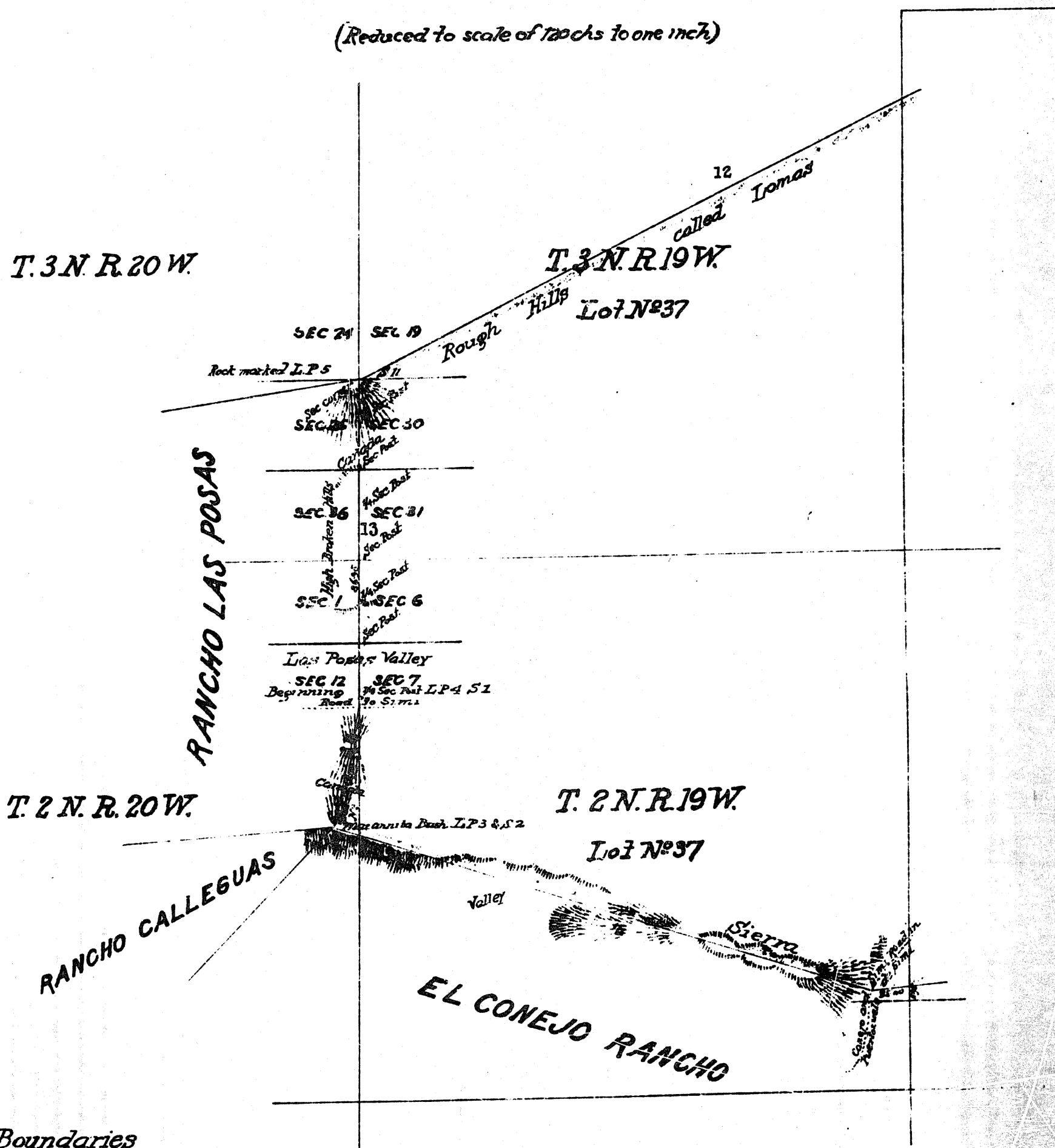
PLAT OF THE RANCTIO SIMI

FINALLY CONFIRMED TO
JOSE DE LA GUERRA Y NORIEGA
*Surveyed under instructions from the
U. S. SURVEYOR GENERAL*

by
J. E. Terrell Dep. Survr
January 1861
Containing 113,009^{7/100} Acres

Scale 80 chs to 1 inch.
Variation 13° 30' East.

(Reduced to scale of 720 chs to one inch)

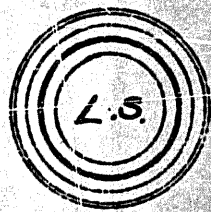


Boundaries

No	Course	Dist.
1	S 75° W	122.20
2	S 71 1/4° E	503.08
3	N 73° E	100.22
4	S 23 1/2° E	112.66
5	N 66 1/2° E	42.80
6	S 7 1/2° W	228.84
7	East	554.96
8	North	420.00
9	East	140.00
10	North	737.16
11	S 87° 21' W	740.60
12	S 63 1/4° W	681.00
13	South	276.95
Aggregate		4614.23 = 87 miles 54 chs 23 7/10

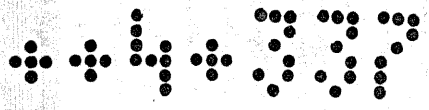
The Field Notes approved March 19th 1861
J. W. Manderville
U. S. Surv. Genl. Cal.

San Francisco, Cal.



Notice of Publication of approval of plat.

L. Upson
U. S. Surv. Genl. Cal.



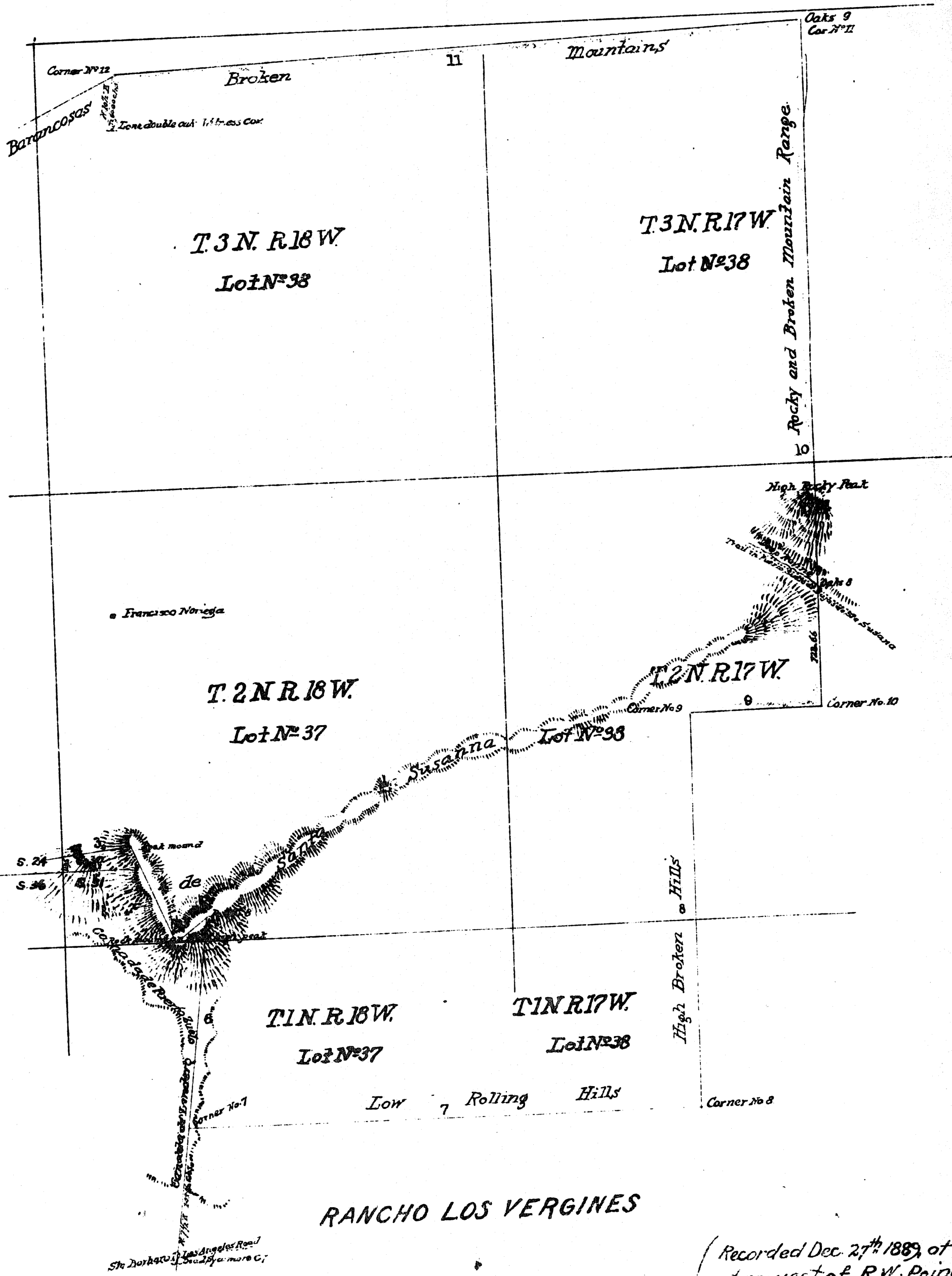
A full, true and correct copy of the original Plat on file in this office.

San Francisco, California
February 1st 1865

L. Upson
U.S. Survey Genl. Cal.

RECORDED
IN U
FEB 1, 1865

SAN FRANCISCO RANCHO



RANCHO LOS VERGINES

(Recorded Dec. 27th 1885, at 12⁵⁵ PM.
at request of R.W. Poindexter)

For Field Notes See C.S. No. 9255
Port. of E. bdy. C.S. 9276 & C.S. 9345