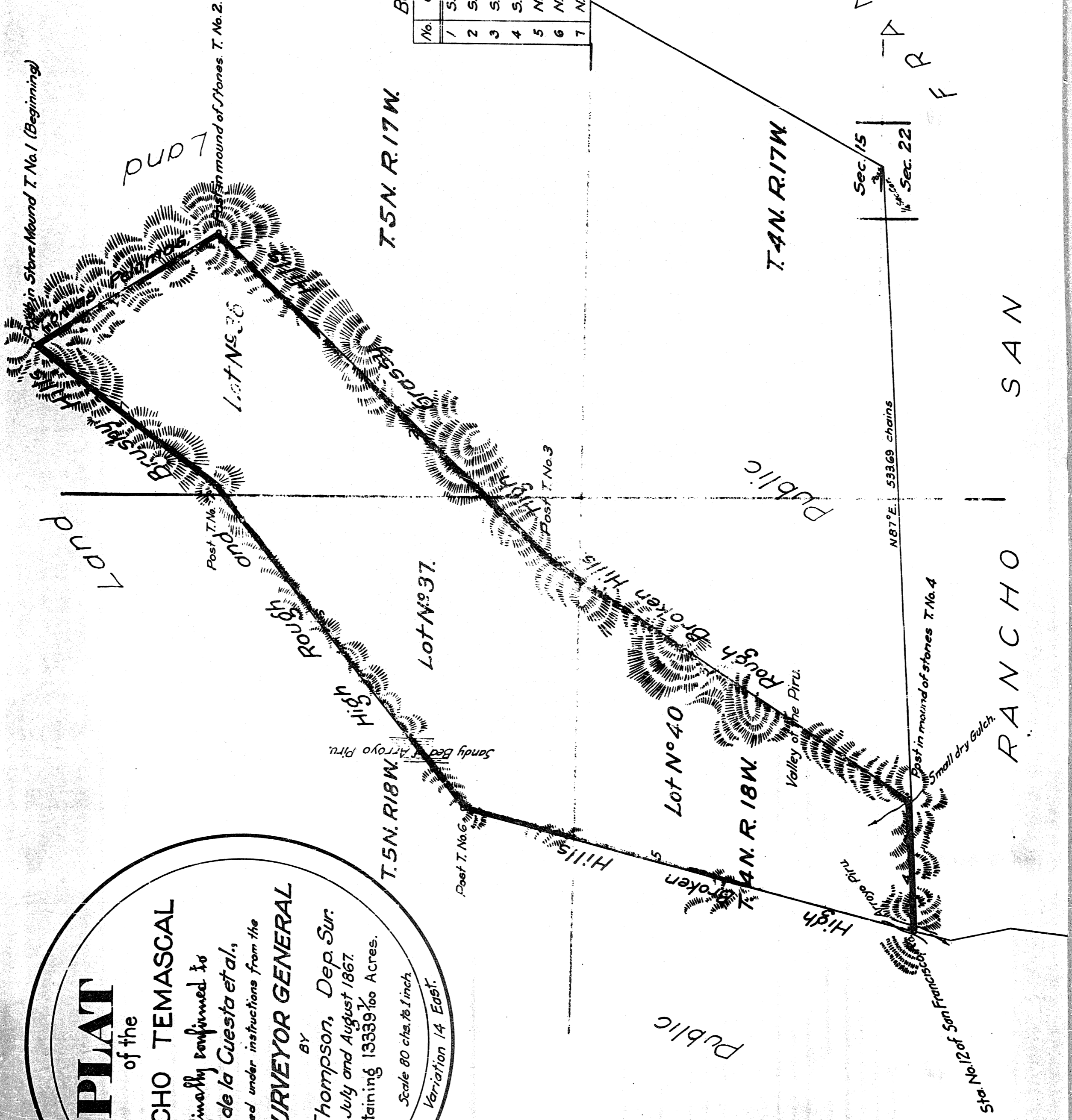


PLAT
of the
RANCHO TEMASCAL
finally confirmed to
B. de la Cuesta et al.
Surveyed under instructions from the
U.S. SURVEYOR GENERAL
BY
G. H. Thompson, Dep. Sur.
July and August 1867.
Containing 13339 $\frac{3}{10}$ Acres.
Scale 80 chs. to 1 inch.
Variation 14 East.



Boundaries.

No.	Course.	Dist.
1	S. 33 $\frac{1}{2}$ E.	174.02
2	S. 43 $\frac{1}{2}$ W.	392.21
3	S. 34 $\frac{1}{2}$ W.	358.87
4	S. 87 W.	110.31
5	N. 15 $\frac{1}{2}$ E.	385.52
6	N. 52 $\frac{1}{2}$ E.	335.35
7	N. 37 $\frac{1}{2}$ E.	183.25

(f. 12.)
O O U S I O N
T A R F

A full, true and correct copy of the original plat on file in this office U.S. Surveyor General's Office, San Francisco, California March 23rd 1871

J. R. Harraonbergh
U.S. Surv. Gen. Cal.
Evid.

L.S.