

Secs. 1, 2, 3, 4, 5, 6, 7, 8, 9, 10, 11, 12, 13, 14, 15, 16, 17 and 18 in San Gabriel Forest Reserve.

Public Land surveyed by Hancock 4101.92 Acres
 Wheeler 5833.83
 Aggregate Area of Public Land surveyed 9935.75 Acres
 Estimated 1360.18
 Private Grant 11744.07
 Unsurrendered Mountain Land 23040.00
 Aggregate 36840.00

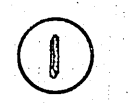
Township line colored both brown and green re-surveyed by Wheeler and charged
 Section Boundary of Lot No 37 colored red, re-surveyed by Wheeler and charged but not charged
 Boundary of Lot No 37 green
 Section lines colored red not charged

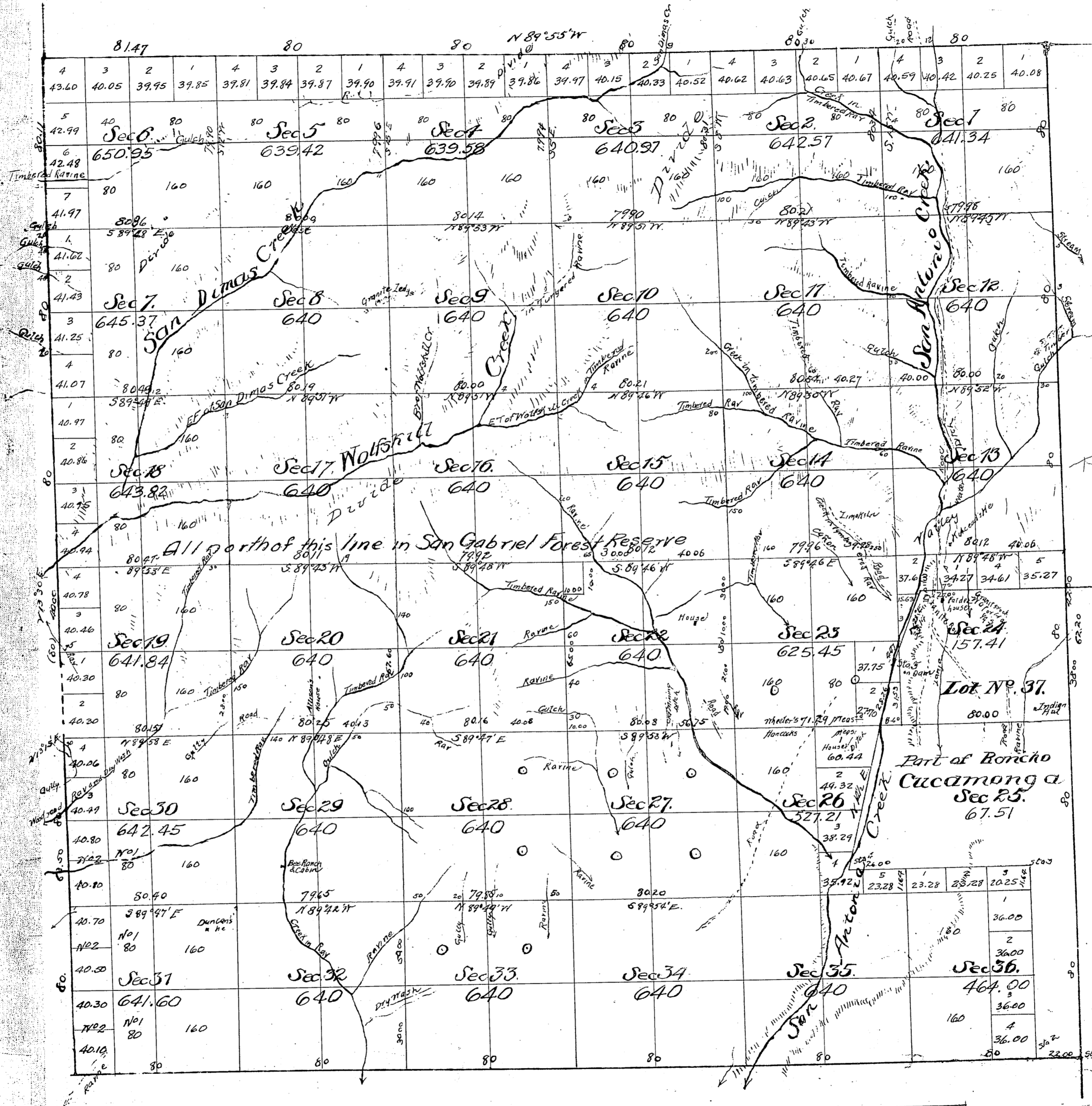
Surveys Designated	By whom surveyed	Date of Contract	Amt of Surveys	When Surveyed
South boundary of Township	H. Washington	Oct. 4 th 1852		1852
Township lines colored brown	A. B. Gray	" 7 th		1852
Boundaries of Lot No 37	H. T. Hancock	(In T) April 1 st 1865		1865
Section lines colored brown		March 7 th		April 28 th 1865
Township line colored Green	M. J. Wheeler	Sept 4 th 1874	0m ¹² 4acres 00 lks	1874
Boundaries of Lot No 37 Col red			0 - 65 - 87 "	1874
Rem of Section lines			18 - 38 - 65 "	Sept 30 th 1874

Variation reported by Hancock on Section lines 14° E.
 Wheeler on lines not otherwise noted 13° 30' E.

Notes on Angeles National Forest Boundary - C.S. 9382
 Sec. lines in part of W 1/2 of Twp. - C.S. 9384
 For corner to Sec. 13, 14, 23 and 24 see C.S. 9392

T
1
N
8
W





For corner to Sec. 13, 14, 23 and 24 see C.S. 9392
 Per. of Sections in W 1/2 of Twp. C.S. 9384
 Notes on Arguelus National Forest Boundary line. C.S. 9382
 Field Notes, Secs 13, 24, see M-27, pg 163.
 " " 1 to 9 and 16 to 19 C.S. 9012.
 " " G, 7, 18 + 19 See C.S. 9040
 Mineral Land containing Gold.
 Field Notes N. Bdy of Township - C.S. 9066
 " " of E 1/2 of township - C.S. 9130
 " " per. Ro. Cucamonga - C.S. 9129
 " " S. line Sec 18 - C.S. 9144
 " " S. line Sec 31 - C.S. 9366
 " " N 1/2 of Twp. and Sec. 19 - C.S. 9421

Amended Plat

Secs. 1 to 18 inclusive in San Gabriel Forest Reserve

Area of Public Land surveyed by Hancock 4101.92 Acres.
 " " Wheeler 6314.43 " "
 " " Pearson, 11295.14 " "
 Aggregate Area of Public Land surveyed 21711.40 " "
 Estimated Private Grant 1368.42 " "
 Aggregate 23079.91 " "

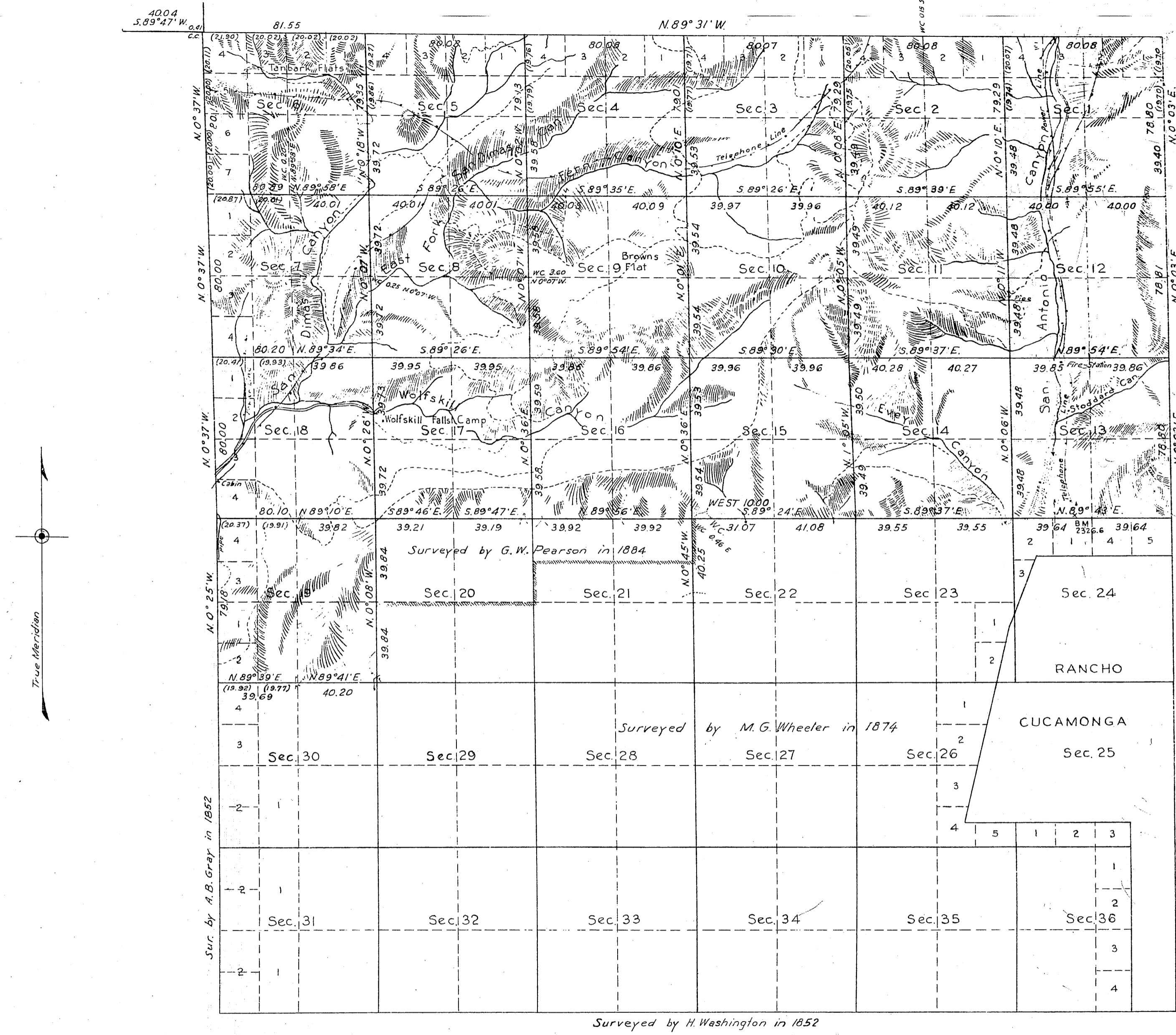
Surveys Designated	By whom surveyed	Date of Contract.	Amount of Surveys	When Surveyed	Mean Declination
Lines colored black.	exhibited on Map approved September 27 th , 1875				
Part of East 1/2 of Twp. colored blue.	J. R. Glover	January 14 th , 1884	6 mcs. 1chs 47 lvs.	1884	14° 26' East.
North boundary of Township.	G. W. Pearson.	December 10 th , 1883	3 " 0 " 11 "	1884	
Part of West 1/2 of Twp. not colored	"	"	28 " 53 " 11 "	"	
Section lines not colored	"	"	9 " 30 " 97 "	"	
" " colored blue resurveyed	"	"	"	"	"
Connecting line, colored red.	"	"	"	"	"

TOWNSHIP N° 1 NORTH, RANGE N° 8 WEST, SAN BERNARDINO MERIDIAN, CALIFORNIA. T 1 N. R 8 W
DEPENDENT RESURVEY

3

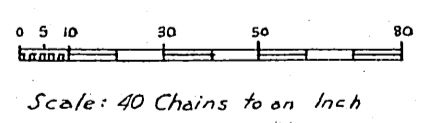
RECEIVED
MAR 21 1941
District Land Office
Los Angeles Calif

Filed in U. S. Land Office
Los Angeles, Cal.
APR 18 1941
Paul A. Altman
Register.



This plat of the resurvey of part of T. 1 N., R. 8 W. delineates a retracement and reestablishment of the lines of the original survey as shown upon the plats approved July 28, 1865, September 21, 1875, and September 15, 1884, in their true original position according to the best available evidence of the position of the original corners; all differences between the measurements shown on the original plats and those derived in the retracement have been distributed proportionally between accepted corners in accordance with surveying rules; reference will be made to the original plats for the showing of the areas.

Lat 34° 06' N
Long 117° 40' W



Area Resurveyed 12,185.84 Acres.

LINES DESIGNATED	BY WHOM SURVEYED	N°	GROUP DATE	MILEAGE		WHEN SURVEYED	
				MLS	CHS	BEGUN	COMPLETED
Exterior Subdivisional	J. L. Warboys F. W. Forrest & R. E. Moss	314	Aug 11, 1937	12	78.05	Dec. 9, 1937	May 11, 1938
			"	"	34	67.02	Jan 1, 1938

Office of Supervisor of Surveys
Denver, Colorado, Feb. 23, 1940
The above plat of Township No. 1 North, Range No. 8 West, San Bernardino Meridian, California, is strictly conformable to the field notes of the survey thereof which have been examined and approved.

David P. Johnson
Supervisor of Surveys.

UNITED STATES
DEPARTMENT OF THE INTERIOR
GENERAL LAND OFFICE
Washington, D.C., March 20, 1940
The survey represented by this plat having been correctly executed in accordance with the requirements of law and the regulations of this office is hereby accepted.

A. H. Wouhan
Acting Assistant Commissioner.

Traced by E.L.S. 6-12-41
Checked by R.S.B. 6-12-41