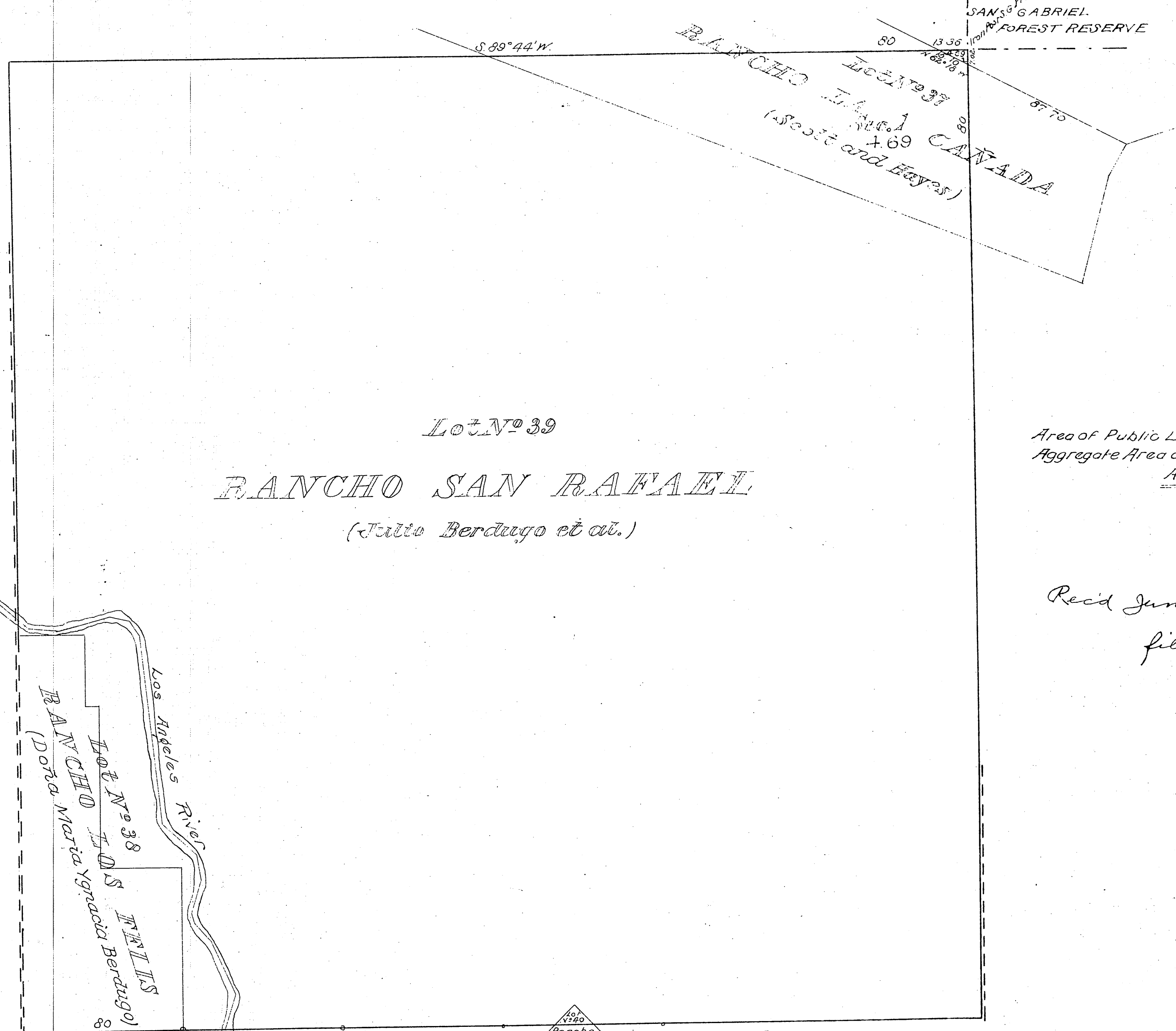


Township N<sup>o</sup> 1 North, Range N<sup>o</sup> 13 West, San Bernardino Meridian, California.

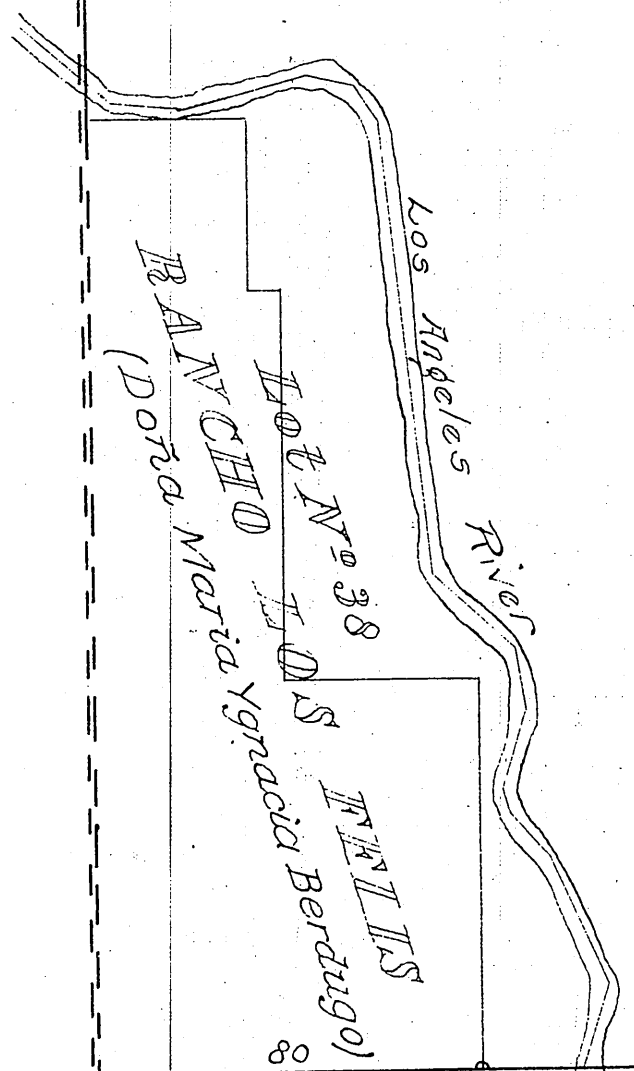
Field Notes  
 C.S. 9049 - S Boundary (Base line)  
 C.S. 9090 - Boundaries of R. La Cañada,  
 R. San Rafael, and Cañada  
 de Los Nogales (Hancock)  
 Also N.B. of Twp. by Norway  
 C.S. 9092 - W. sides Secs. 6 & 7



Lot N<sup>o</sup> 39  
**RANCHO SAN RAFAEL**  
 (Julio Berdugo et al.)

Area of Public Land surveyed	4.69 Acres
Aggregate Area of Private Grants	23,040.04 "
Aggregate	23,044.73 "

Rec'd June 30/04  
 filed July 30/04



SAN BERNARDINO <sup>Lot 1340</sup> Rancho Cañada de Los Nogales BASE LINE

Surveys Designated	By whom Surveyed	Date of Contract	When Surveyed
San Bernardino Base Line	Henry Washington	Oct. 4, 1852	1853
Parts of E. & W. B'dies of Tp.	Henry Hancock	Dec. 30, 1853	1854
Boundaries of Lot N <sup>o</sup> 37	"	Inst. Sept 1, 1858	1859
" " " 38	George Hartzen	" Apr. 14, 1866	1866
" " " 39	G. H. Thompson	" Nov. 23, 1869	1869
" " " 40	Henry Hancock	" Oct. 1, 1858	1858
Rest of West B'dy of Township	W. H. Norway	July 31, 1875	1875
East and North B'dies of Tp	"	"	"
North B'dy of Lot N <sup>o</sup> 37, Re-surveyd.	"	"	"
B'dies of San Gabriel Forest Reserve	L. H. Cutting	126, Feb. 24, 1890	1890

The above Map of Township N<sup>o</sup> 1 North, Range N<sup>o</sup> 13 West, San Bernardino Meridian, California, is strictly conformable to the Field notes of the surveys thereof, on file in this Office, which have been examined and approved  
 U. S. Surveyor-General's Office  
 San Francisco, California,  
 May 10<sup>th</sup> 1904

*[Signature]*