

Township 11 N. Range 14 W. S. B. M. Variation reported by Goldsworthy where otherwise noted 13°35' East

Aggregate Area of Public Land  
Estimated " " Private Grants  
" " " Unsurveyed Mountain Land  
Aggregate: 23,082.72 "

263,428 Acres  
17,785.74 "  
2,662.76 "

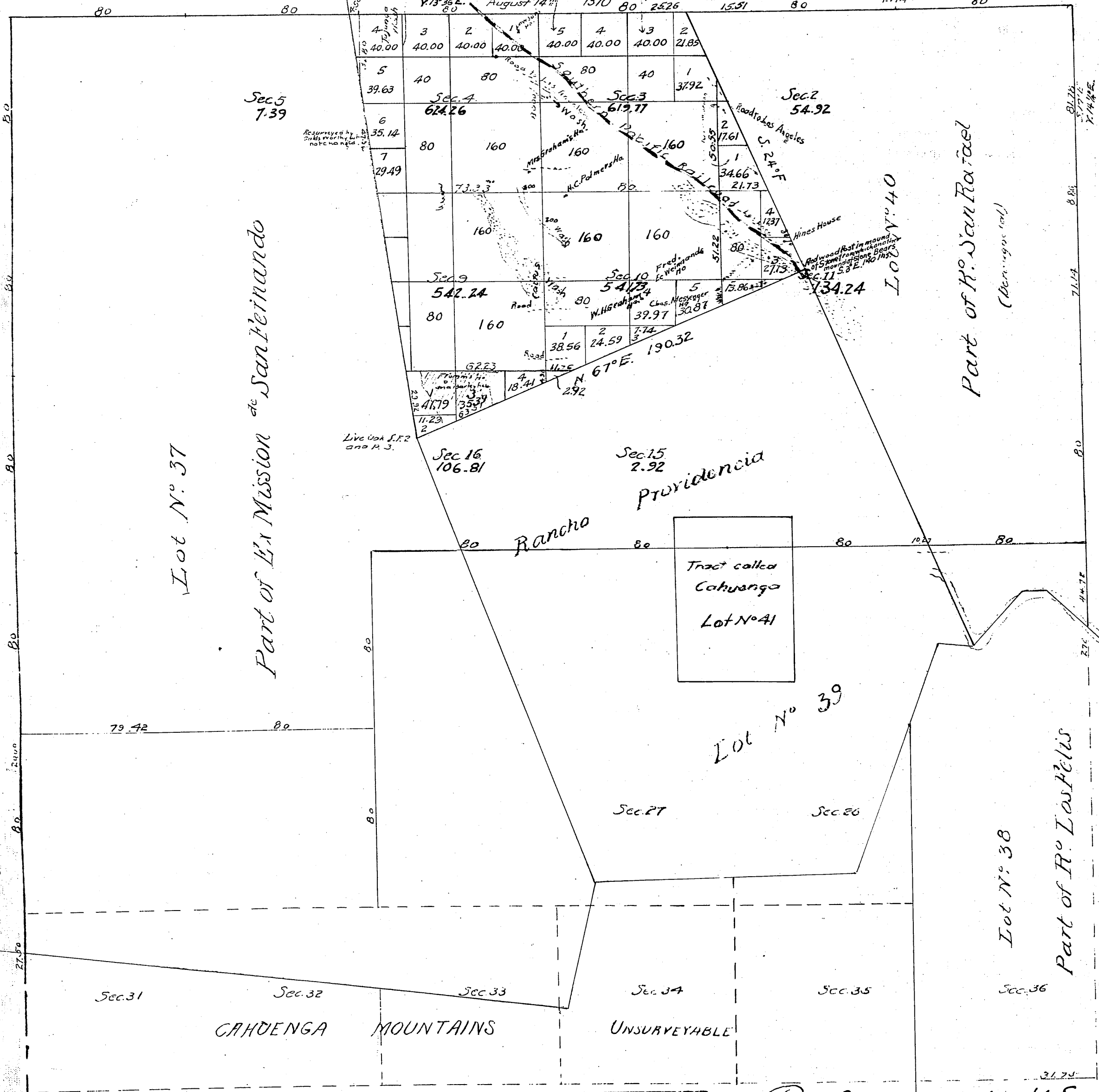
The above Map of Township N°11 north, Range N°14 West, San Bernardino Meridian, is strictly conformable to the field notes or the surveys thereof on file in this Office which have been examined and approved

Surveyor-General's Office

San Francisco, California

August 12<sup>th</sup> 1870

H. P. Loebell  
Surv. Genl Cal<sup>o</sup>



| Surveys Designated          | By whom surveyed              | Date of Contract                  | Amount of Surveys     | When Surveyed             |
|-----------------------------|-------------------------------|-----------------------------------|-----------------------|---------------------------|
| Township lines colored blue | Henry Washington              | Oct 4 <sup>th</sup> 1852          |                       | 1853                      |
| " " & Sec. lines " brown    | Henry Hancock                 | Dec. 30 <sup>th</sup> 1853        |                       | 1854                      |
| Boundaries of Lot N° 38     | George Hanson                 | (inst) Apr. 14 <sup>th</sup> 1866 |                       | 1866                      |
| " " " Lots, N° 39 & 41      | G.H. Thompson                 | " June 20 <sup>th</sup> 1868      |                       | 1868                      |
| " " " Lot N° 37             | Compiled in Surv. Gen. Office |                                   |                       | 1868                      |
| " " " " 40                  | G.H. Thompson                 |                                   |                       | May 26 <sup>th</sup> 1869 |
| Township lines colored red  | W.H. Norway                   | (inst) Nov. 23 <sup>rd</sup> 1869 |                       | 1869                      |
| " " " " green               | John Goldsworthy              | July 31 <sup>st</sup> 1875        |                       | 1875                      |
| Ranch " " " blue            | "                             | Aug. 16, 1875                     |                       | 1876                      |
| Section " " " is in colored | "                             | "                                 | 1 mi. 30 chs. 76 lks. | "                         |
|                             |                               |                                   | 2 " 12 " 85 "         | "                         |
|                             |                               |                                   | 6 " 68 " 58 "         | Mar 4 1876                |

Read and filed in the U.S. Land Office  
Los Angeles Calif August 21/1871  
Registered

TIN  
RI4W

(2)

Township No 1 North, Range No 14 West, San Bernardino Meridian.

The above map of Township No 1 North, Range No 14 West San Bernardino Meridian is strictly conformable to the field notes of the Surveys hereof on file in this office, which have been examined & approved  
Surveyor General's Office  
San Francisco California  
June 19, 1885

Public Land surveyed by Goldsworthy Reynolds 2,634.28 Acres  
Aggregate Area of Public Land surveyed 2,354.48 "  
Estimated " Private Grants 288.76 Acres  
Aggregate 2,643.24 "

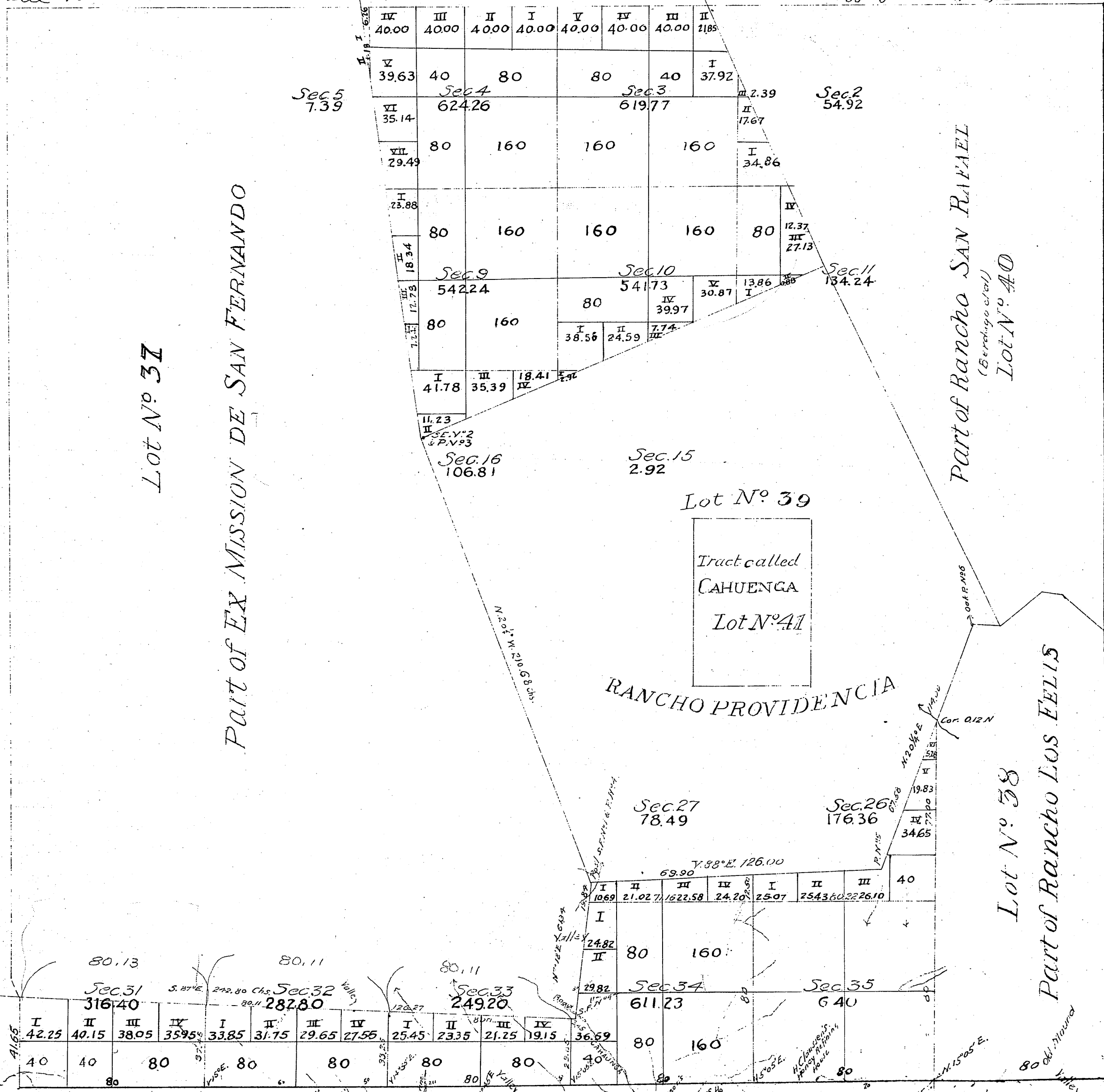
C.S. 9257 Por. of R. bdy Line & Sec Lines  
C.S. 9247 - S. bdy of Township

Lot No 37

PART OF EX MISSION DE SAN FERNANDO

Part of Rancho SAN RAFAEL

Lot No 40



See M. 4-26 For Valdez affidavit  
see D.M. 3074-249

| Surveys Designated                 | By whom surveyed | Date of contract  | Amount of Surveys   | When Surveyed | Mag Decl'n |
|------------------------------------|------------------|-------------------|---------------------|---------------|------------|
| South by Tp.                       | Wm P Reynolds    | October 30th 1878 | 6 mls. 00chs 00lks. | 1879          |            |
| Part of W. By of Tp. cal. Red      | "                | "                 | 0 " 41 " 65 "       | "             | 15° 05 "   |
| Sections lines                     | "                | "                 | 4 " 11 " 13 "       | Aug 16th 1879 | "          |
| Ranch Boundries cal. Red, Resurr'd | "                | "                 | 11 " 3 " 82 "       | "             | "          |

Lines run by Reynolds pass over Mountainous Land.

C.S. 9090 - Boundary of Ra San Rafael (Hancock) - Not Patent line  
C.S. 9092 - E. sides Secs. 18, 17, N. side Secs. 182 (Norway 1875)

W. J. Turner  
City of Los Angeles  
City of Los Angeles

For Field Note - for Secs 2-3-10-11 - See M. 27 - Pages 19 to 81  
" 31-32-33 " 227 to 235  
" East side T14R14W " 231  
South boundary line of Township m. 27 - 231 to 235  
E. line of Sec. 32 m. 27. 235 W. line of Sec. 32 m. 27-236  
S. Boundary - Base Line (By of 1 set 5) C.S. 9049  
Section 10 - C.S. 9050  
Sec. 26 to 27 - E. side 35, S. side 35 + 36 - C.S. 9059  
S. B. Secs. 37, 33, 34 - C.S. 9081

ORIGINAL

TOWNSHIP 1 NORTH, RANGE 14 WEST, OF THE SAN BERNARDINO MERIDIAN, CALIFORNIA.

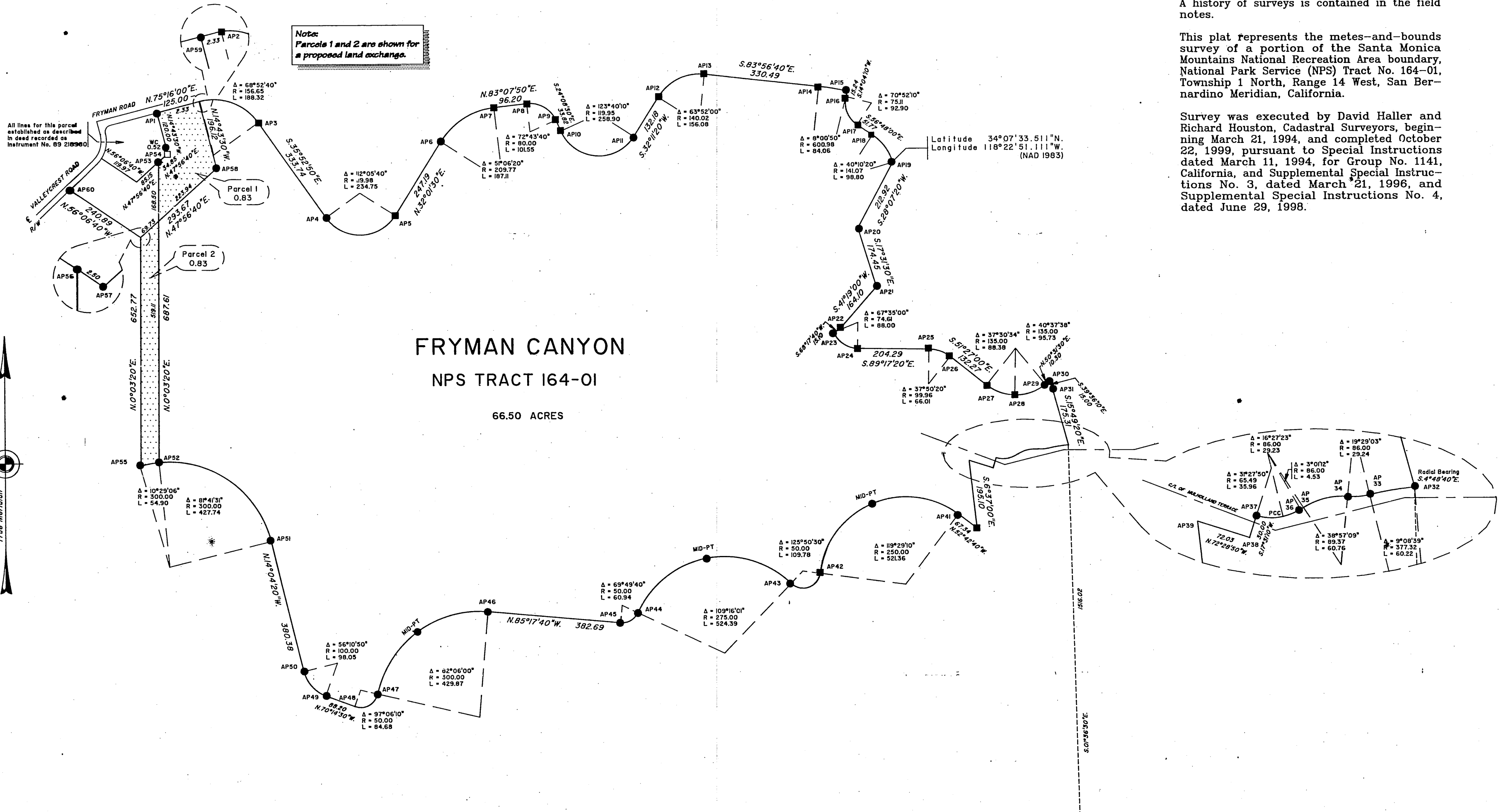
METES-AND-BOUNDS SURVEY IN FRACTIONAL SECTION 31

A history of surveys is contained in the field notes.

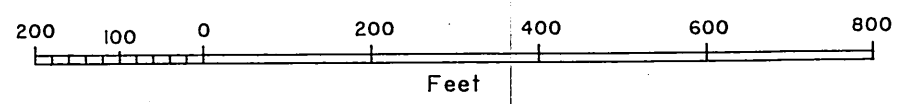
This plat represents the metes-and-bounds survey of a portion of the Santa Monica Mountains National Recreation Area boundary, National Park Service (NPS) Tract No. 164-01, Township 1 North, Range 14 West, San Bernardino Meridian, California.

Survey was executed by David Haller and Richard Houston, Cadastral Surveyors, beginning March 21, 1994, and completed October 22, 1999, pursuant to Special Instructions dated March 11, 1994, for Group No. 1141, California, and Supplemental Special Instructions No. 3, dated March 21, 1996, and Supplemental Special Instructions No. 4, dated June 29, 1998.

Note: Parcel 1 and 2 are shown for a proposed land exchange.



- LEGEND**
- Local Evidence Recovered: Remonumented
  - Position Determined and Monumented
  - Local Evidence Recovered: Not Remonumented



31 32  
6 5

UNITED STATES DEPARTMENT OF THE INTERIOR  
BUREAU OF LAND MANAGEMENT  
Sacramento, California

This plat, having been correctly prepared in accordance with the requirements of law and this Bureau, is hereby accepted.

For the Director

*James J. Piny* September 6, 2000  
Chief Cadastral Surveyor—California

D.a.d.  
RLH