

1 1/4" = 40 chms

Aggregate Area of Public Land 1,219.31 Acres
Private Grants 21,701.69 "
Aggregate Area of Township 22,921.00 "

Part of N. bdy. & other lines ~ C.S. 9270
E. & W. lines of Secs 34 & 35 ~ C.S. 9344
Part of interior lines ~ C.S. 9347

Surveys Designated	By whom Surveyed	Date of Contract	Amt of Surveys	When surveyed
Parts of E. and W. boundaries of T ^o	Henry Washington	October 4 th 1852		1853
North and part of East boundary	Henry Hancock	December 30 th 1853		1854
Part of West boundary	R. W. Norris	October 12 th 1853		1853
Parts of S. and E. boundaries	W. P. Reynolds	September 11 th 1876		1876
Part of South boundary	A. G. Ruxton	September 24 th 1887		1888
Boundaries Lot No 37	Compiled in Office of U. S. Surveyor General			
35	G. H. Thompson	Inst. August 3 ^d 1868		1868
39	William Minto			1881
37 Resurvey'd	J. R. Glover	Inst. June 18 th 1895		1895
39 "	J. R. Glover & M. F. Rully	" November 1 st 1895	0 mls. 58 chs. 40 1/4 "	"
Part of E. bound of Township	"	" " " "	0 " 43 " 00 "	"
Section lines	"	" " " "	1 " 73 " 93 "	"
Connections	"	" " " "	0 " 16 " 9 "	December 24 th 1895

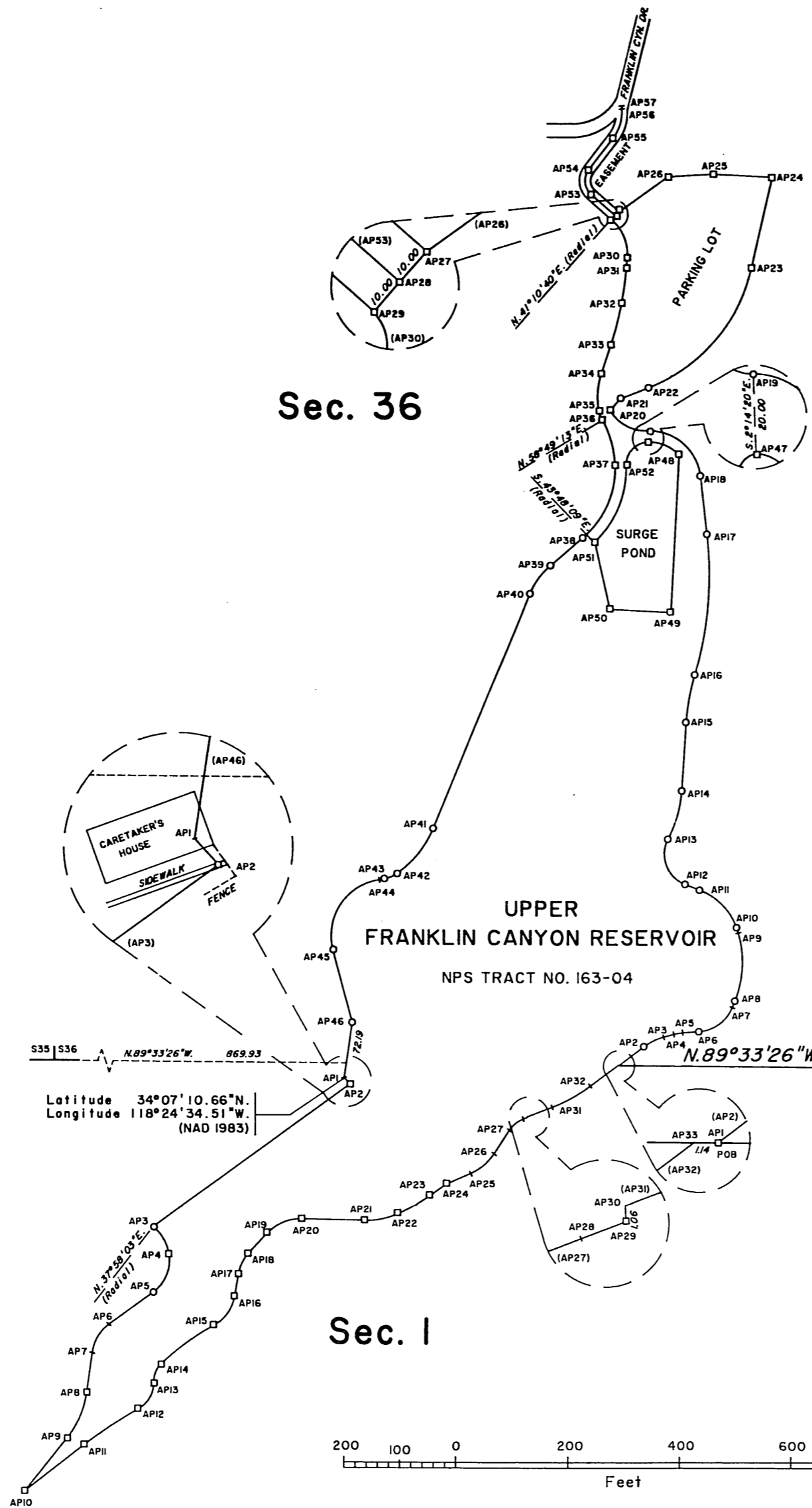
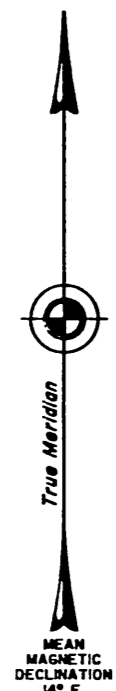
Govt Field Notes.
C.S. 9093 - Base line by offsets thru Secs. 19, 21, 22, 25, 26, 27, 28, 29, 30, 31, & 36.
(H. Washington 1852)
C.S. 9257 Part of Ro. Line

Mean declination 14° 35'

TOWNSHIPS I NORTH AND I SOUTH, RANGE 15 WEST, OF THE SAN BERNARDINO MERIDIAN, CALIFORNIA

METES-AND-BOUNDS SURVEY

ORIGINAL



COURSE	COURSE TYPE	BEARING or DELTA	LINE or ARC DIST. FEET	RADIUS FEET
AP1-AP2, Sec. 36	LINE	N. 53°12'18\"E.	56.42	N/A
AP2-AP3	CURVE	21°44'22\"	36.16	100.37
AP3-AP4	LINE	N. 7°06'58\"E.	18.99	N/A
AP4-AP5	CURVE	11°00'18\"	16.09	63.75
AP5-AP6	LINE	N. 63°56'54\"E.	23.49	N/A
AP6-AP7	CURVE	63°18'38\"	77.66	70.32
AP7-AP8	LINE	N. 22°40'18\"E.	18.23	N/A
AP8-AP9	CURVE	39°43'46\"	124.03	176.87
AP9-AP10	LINE	N. 17°03'30\"W.	3.09	N/A
AP10-AP11	CURVE	50°01'08\"	102.13	112.46
AP11-AP12	LINE	N. 69°05'18\"W.	28.78	N/A
AP12-AP13	CURVE	37°08'33\"	97.54	57.53
AP13-AP14	CURVE	24°18'02\"	30.03	212.27
AP14-AP15	LINE	N. 34°51'12\"E.	121.63	N/A
AP15-AP16	CURVE	12°56'51\"	86.88	394.62
AP16-AP17	CURVE	23°05'30\"	249.73	619.64
AP17-AP18	LINE	N. 6°23'47\"W.	109.37	N/A
AP18-AP19	CURVE	68°00'37\"	137.37	52.09
AP19-AP20	CURVE	61°03'48\"	80.16	75.21
AP20-AP21	LINE	N. 40°46'02\"E.	27.18	N/A
AP21-AP22	LINE	N. 68°40'28\"E.	55.29	N/A
AP22-AP23	CURVE	55°42'23\"	294.59	303.00
AP23-AP24	LINE	N. 12°58'05\"E.	163.90	N/A
AP24-AP25	LINE	N. 86°59'20\"W.	107.12	N/A
AP25-AP26	LINE	S. 86°41'33\"W.	91.03	N/A
AP26-AP27	LINE	S. 54°06'24\"W.	108.01	N/A
AP27-AP28	LINE	S. 41°10'40\"W.	10.00	N/A
AP28-AP29	LINE	S. 41°10'40\"W.	10.00	N/A
AP29-AP30	CURVE	53°45'50\"	76.01	81.00
AP30-AP31	LINE	S. 4°56'30\"W.	17.29	N/A
AP31-AP32	CURVE	5°43'00\"	63.76	635.36
AP32-AP33	CURVE	72°02'43\"	76.83	N/A
AP33-AP34	LINE	S. 18°08'15\"W.	54.22	N/A
AP34-AP35	CURVE	32°18'25\"	73.58	130.49
AP35-AP36	LINE	S. 22°58'19\"E.	3.00	N/A
AP36-AP37	CURVE	29°22'01\"	83.13	117.03
AP37-AP38	CURVE	50°54'16\"	143.99	162.07
AP38-AP39	LINE	S. 49°05'30\"W.	79.89	N/A
AP39-AP40	CURVE	29°51'50\"	61.41	130.37
AP40-AP41	LINE	S. 22°13'40\"W.	454.59	N/A
AP41-AP42	CURVE	32°23'06\"	105.12	185.98
AP42-AP43	CURVE	27°08'00\"	29.04	61.32
AP43-AP44	LINE	S. 81°46'46\"W.	5.74	N/A
AP44-AP45	CURVE	36°41'00\"	163.54	100.47
AP45-AP46	LINE	S. 14°56'14\"E.	133.02	N/A
AP46-AP47	LINE	S. 46°08'28\"W.	100.01	N/A
AP1-AP2, Sec. 1	LINE	S. 42°19'24\"E.	15.27	N/A
AP2-AP3	LINE	S. 53°59'32\"W.	435.66	N/A
AP3-AP4	CURVE	41°59'31\"	56.50	77.09
AP4-AP5	CURVE	64°41'15\"	78.62	70.00
AP5-AP6	LINE	S. 54°18'49\"W.	97.46	N/A
AP6-AP7	CURVE	46°15'15\"	60.55	75.00
AP7-AP8	LINE	S. 8°03'54\"W.	72.45	N/A
AP8-AP9	CURVE	30°37'15\"	88.18	165.00
AP9-AP10	LINE	S. 38°40'49\"W.	120.65	N/A
AP10-AP11	LINE	N. 52°10'36\"E.	133.21	N/A
AP11-AP12	CURVE	85°51'20\"	117.39	756.67
AP12-AP13	CURVE	62°24'20\"	57.61	52.89
AP13-AP14	CURVE	48°30'05\"	36.67	43.32
AP14-AP15	CURVE	13°59'15\"	117.12	473.74
AP15-AP16	CURVE	50°57'50\"	64.89	72.35
AP16-AP17	LINE	N. 10°11'06\"E.	40.52	N/A
AP17-AP18	CURVE	32°41'35\"	43.13	75.60
AP18-AP19	LINE	N. 42°53'01\"E.	45.59	N/A
AP19-AP20	CURVE	48°20'26\"	70.58	83.65
AP20-AP21	LINE	S. 88°46'33\"E.	112.13	N/A
AP21-AP22	CURVE	25°26'35\"	61.64	138.81
AP22-AP23	CURVE	11°19'42\"	65.77	332.64
AP23-AP24	LINE	N. 54°27'10\"E.	36.47	N/A
AP24-AP25	LINE	N. 66°12'21\"E.	47.34	N/A
AP25-AP26	CURVE	33°44'12\"	55.38	94.05
AP26-AP27	LINE	N. 32°28'09\"E.	49.81	N/A
AP27-AP28	CURVE	36°40'08\"	32.33	50.51
AP28-AP29	LINE	N. 69°08'17\"E.	8.35	N/A
AP29-AP30	LINE	N. 2°49'34\"W.	1.06	N/A
AP30-AP31	LINE	N. 69°19'32\"E.	47.22	N/A
AP31-AP32	CURVE	16°07'19\"	79.25	281.65
AP32-AP33	LINE	N. 53°12'13\"E.	62.72	N/A
AP33-AP1, Sec. 36	LINE	S. 89°33'26\"E.	1.14	N/A
SEGREGATION				
AP47-AP48	CURVE	48°30'20\"	62.29	72.09
AP48-AP49	LINE	S. 2°53'13\"W.	282.70	N/A
AP49-AP50	LINE	N. 87°06'45\"W.	109.61	N/A
AP50-AP51	LINE	N. 12°36'08\"W.	123.89	N/A
AP51-AP52	CURVE	48°00'22\"	152.55	182.07
AP52-AP47	CURVE	89°34'05\"	63.52	40.63
CENTER LINE OF EASEMENT				
AP28-AP53	LINE	N. 48°49'20\"W.	58.32	N/A
AP53-AP54	CURVE	86°10'50\"	48.67	32.49
AP54-AP55	LINE	N. 37°23'34\"E.	72.25	N/A
AP55-AP56	CURVE	41°56'50\"	54.91	73.00
AP56-AP57	LINE	N. 4°33'16\"W.	5.51 (AS-BUILT E)	N/A

T. 1 N., R. 15 W., S.B.M. 1154.08
 T. 1 S., R. 15 W., S.B.M. 1
 1/4
 Sec. Cor.
 Sec. 1

- LEGEND
- U.S.D.I. MONUMENT SET
 - FOUND MONUMENT
 - ANGLE POINT NOT MONUMENTED.

A history of surveys is contained in the field notes.

This plat represents the metes-and-bounds survey of a portion of the Santa Monica Mountains National Recreation Area Boundary, National Park Service Tract No. 163-04, Townships 1 North and 1 South, Range 15 West, San Bernardino Meridian, California.

Lottings and areas are as shown on the township plats approved October 7, 1896 and March 28, 1889.

Resurvey was executed by David H. Haller, Cadastral Surveyor, beginning June 3, 1993, and completed August 15, 1993, pursuant to Special Instructions dated April 13, 1992, Supplemental Special Instructions No. 1 dated July 13, 1992, and Supplemental Special Instructions No. 2 dated June 2, 1993, for Group No. 1141, California.

UNITED STATES DEPARTMENT OF THE INTERIOR
 BUREAU OF LAND MANAGEMENT
 Sacramento, California

This plat is strictly conformable to the approved field notes, and the survey, having been correctly executed in accordance with the requirements of law and the regulations of this Bureau, is hereby accepted.

For the Director
February 3, 1998
Lance J. Bishop
 Chief Cadastral Surveyor—California

D.o.d.