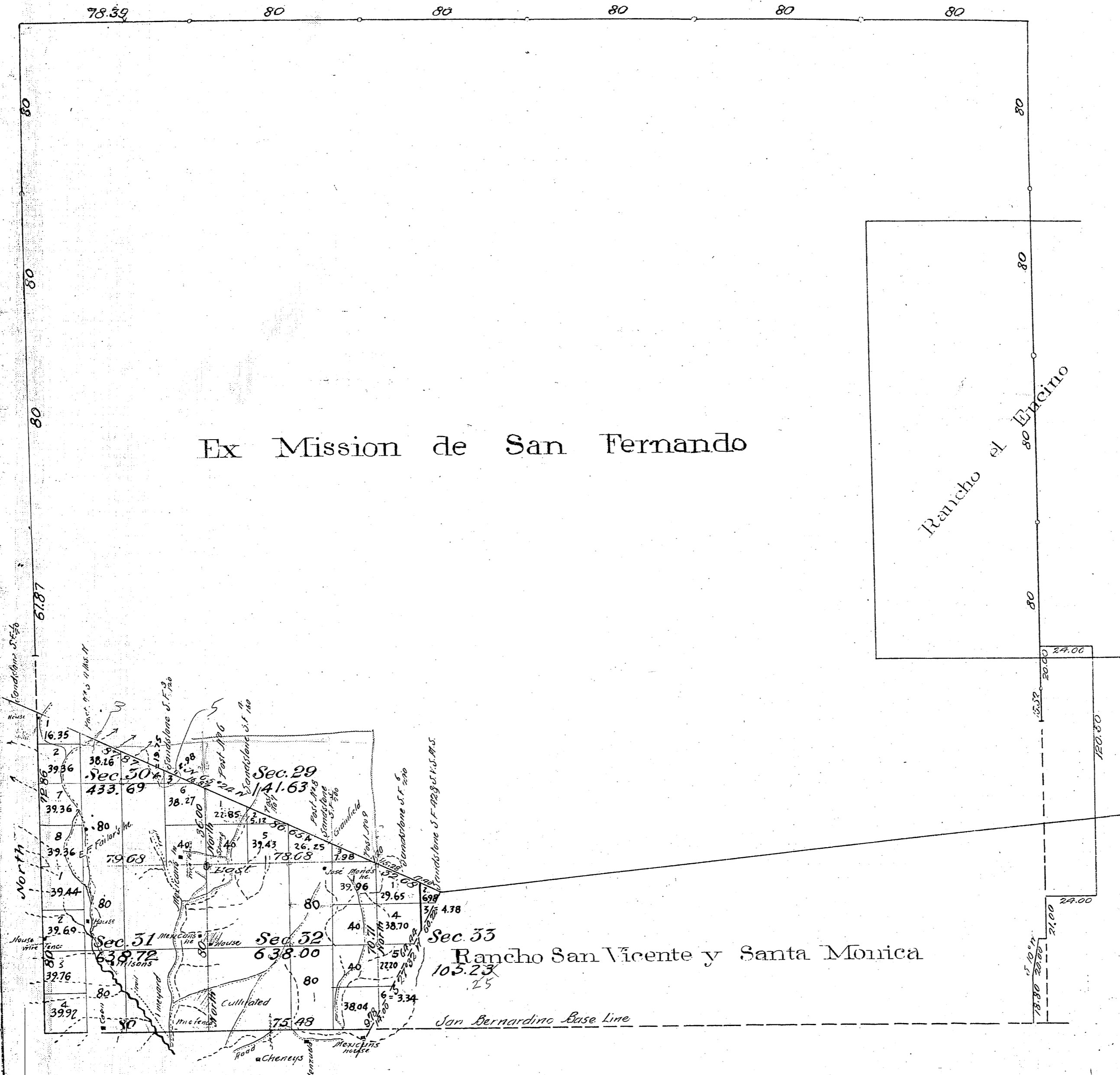


Township N^o 1 North, Range N^o 16 West, San Bernardino Meridian, California.



Estimated Area of Private Monte previously surveyed
Area of Public Land surveyed by Deputy Reilly
Appropriated
044.09 Ac
957.27
001.36 Ac

200
171.64
137.68
18.89

Field Notes for
W line Sec. 30
see C 59008
Sur.

Part of S. Bdy. of Rancho C.S. 9254
Part of interior lines C.S. 9270
Rancho Twyp & Sec lines C.S. 9298
Part of interior lines - C.S. 9347

Lines designated	By whom Surveyed	Date of Contract	Amount of Survey	When Surveyed	Mean Declination
N. and part of W. boundary of Township	Henry Hancock	Dec 30 1853		1854	
N. and boundary of Tp. (in part)	Henry Washington	Oct 4 1852		1853	
E. boundary of Township (in part)	R. W. Norris	Oct 12 1853		1853	
Boundary of Rancho San Fernando	Henry Hancock	Sept 1 1858		1860	
San Vicente y Santa Monica	H. Monte	Dec 15 1880		1881	
Boundary of Public Land in Township	J. R. Glover	Cont 382 Nov 20 1884	See plat of Filmore 4 Mls 25 Cho Juko	1895	
Section Lines	M. G. Reilly	Contract No 383	O. " 43 " 13 "		
Connecting lines		Valid Nov 20 1884		Oct 19 1895	14° 30' East

TOWNSHIP 1 NORTH, RANGES 16 AND 17 WEST, OF THE SAN BERNARDINO MERIDIAN, CALIFORNIA.

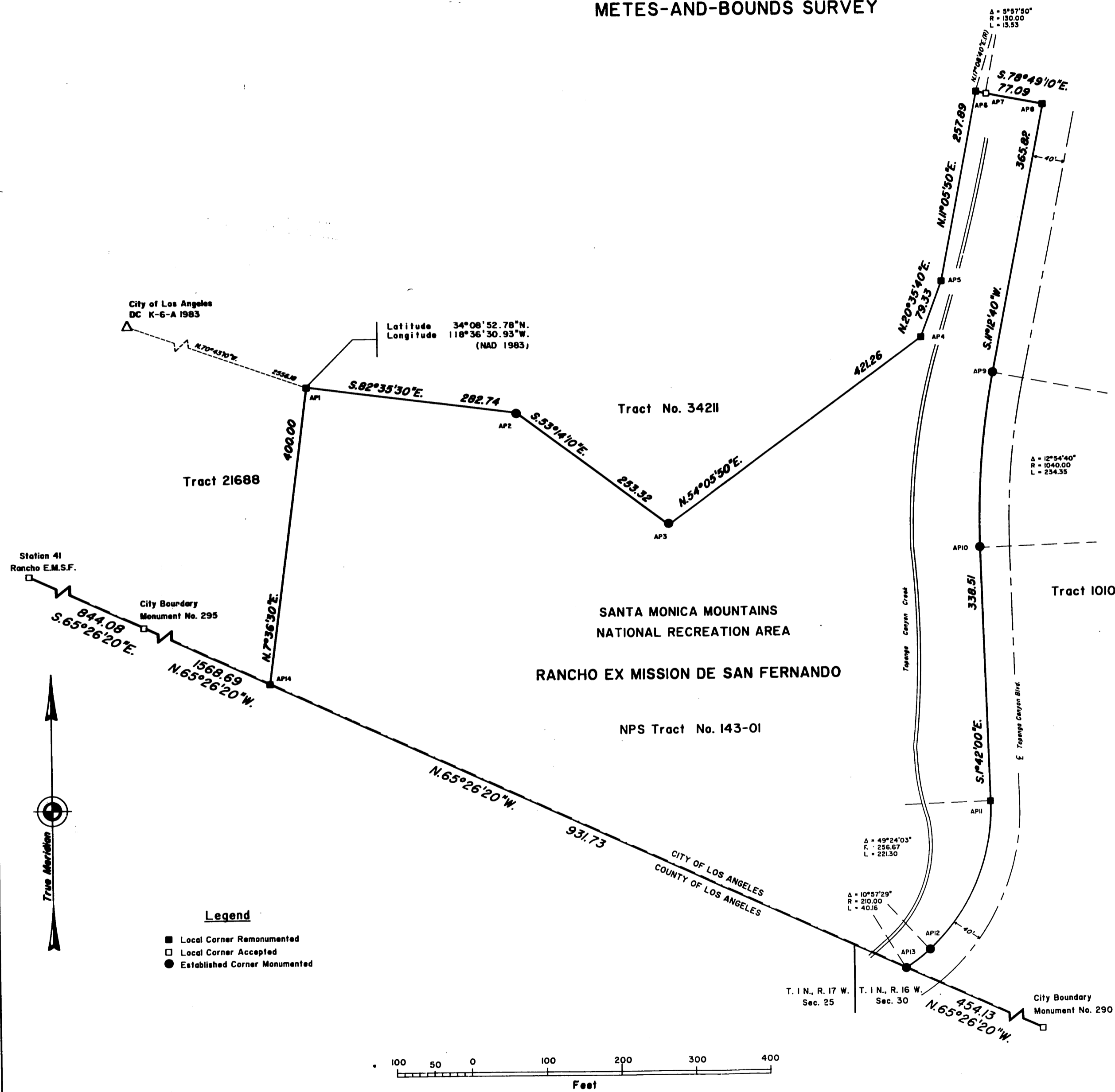
METES-AND-BOUNDS SURVEY

ORIGINAL

A history of surveys is contained in the field notes.

This plat represents the metes-and-bounds survey of a portion of the Santa Monica Mountains National Recreation Area boundary, National Park Service (NPS) Tract No. 143-01, Township 1 North, Ranges 16 and 17 West, San Bernardino Meridian, California.

Survey was executed by David H. Haller, Cadastral Surveyor, Beginning March 21, 1994, and completed June 26, 1995, pursuant to Special Instructions dated March 11, 1994, for Group No. 1199, California.



UNITED STATES DEPARTMENT OF THE INTERIOR
BUREAU OF LAND MANAGEMENT
Sacramento, California

This plat is strictly conformable to the approved field notes, and the survey, having been correctly executed in accordance with the requirements of law and the regulations of this Bureau, is hereby accepted.

For the Director

Clifford L. Johnson September 13, 1996
Chief Cadastral Surveyor-California

D.a.d.
D.H.