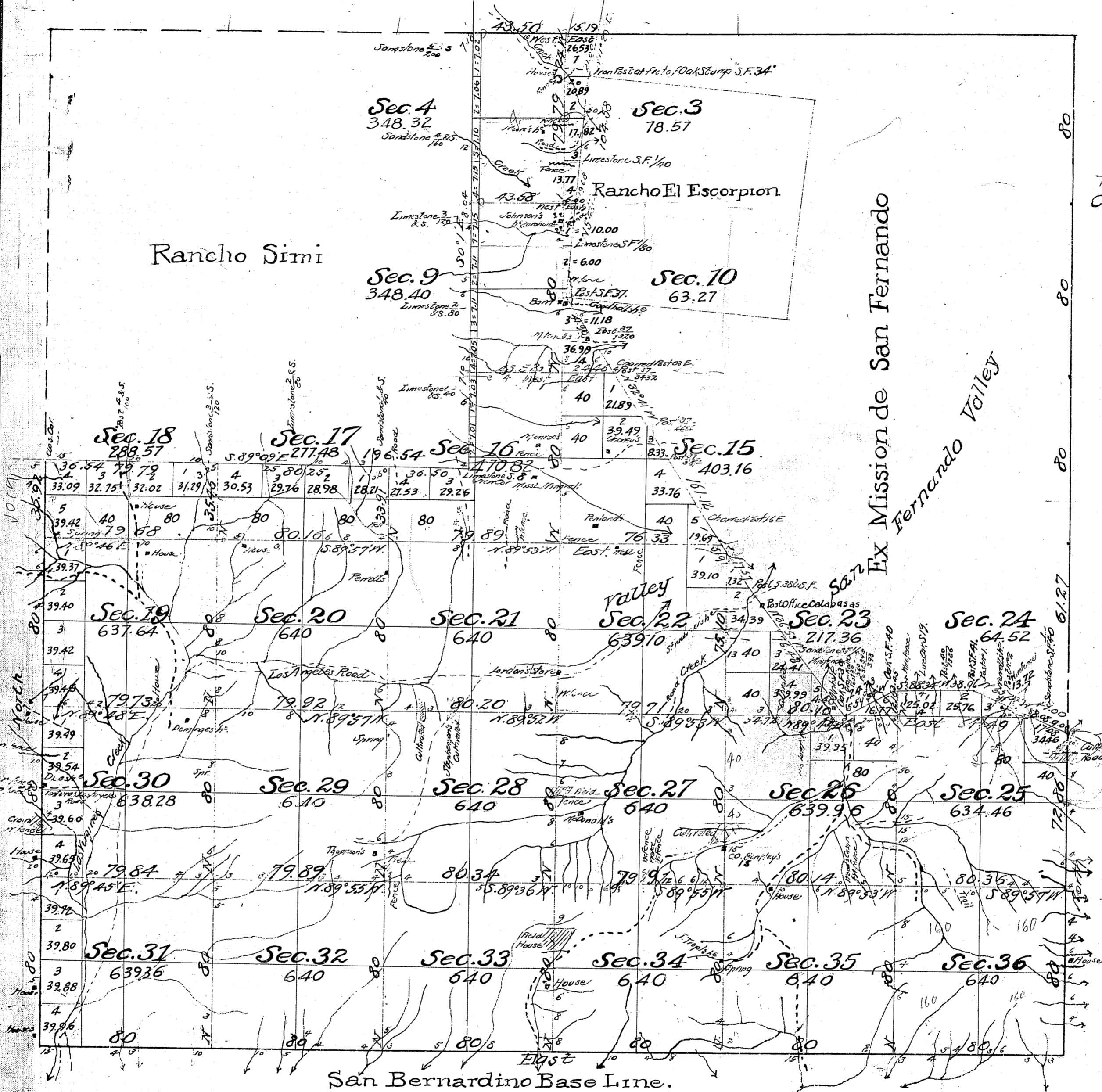


Township N° 1 North, Range N° 17 West, San Bernardino Meridian, California.

①



C.S. 9119 South and East Boundary of Rancho "Simi"
 C.S. 9254, portion of W. bdy. of Ra. San Fernando
 C.S. 9255 Po. of Ra. Simi
 Traverse line & part of W. bdy. C.S. 9271 See C. S. 9298, C.S. 9299

(Interior Section Lines)

Estimated Area of Private Grants 10,286.61 Acres
 Aggregate " " Public Land 12,789.21
 Aggregate 23,075.82

| Surveys Designated | By whom surveyed | Contract | | Amount of Surveys | | | When surveyed | When Dealt |
|----------------------------------|------------------|----------|---------------|-------------------|------|------|---------------|---------------|
| | | No. | Date | MLS. | CHS. | LKS. | | |
| N. and E. Bdy. of T.P. (in part) | Henry Hancock | | Dec. 30. 1853 | | | | 1854 | |
| E. Ward S. " " " | Henry Washington | | Oct. 4. 1852 | | | | 1853 | |
| Box e. Rancho Simi | J. E. Terrell | | Aug. 1. 1860 | | | | 1861 | |
| " " San Fernando | Henry Hancock | | Sept. 1. 1858 | | | | 1860 | |
| " " El Escorpion | G. H. Thompson | | Aug. 9. 1870 | | | | 1870 | |
| " " Public Land in Township | J. R. Glover | 382 | Nov. 20. 1884 | Seopt of Exterior | | | 1895 | |
| Section Lines north | M. I. Reilly | 383 | Nov. 20. 1884 | 35 | 14 | 61 | 1895 | |
| Connecting lines | " | " | " | 1 | 39 | 49 | Oct. 17, 1895 | 14° 30' East. |

Gov't Field Notes
 S. sides Secs. 31, 32, 33, 34, C.S. 9061
 W. sides Secs. 18, 19, 30, 31 - C.S. 9082
 N. E & W. line of Sec. 35 - C.S. 9182
 160 FD

TOWNSHIP 1 NORTH, RANGES 16 AND 17 WEST, OF THE SAN BERNARDINO MERIDIAN, CALIFORNIA.

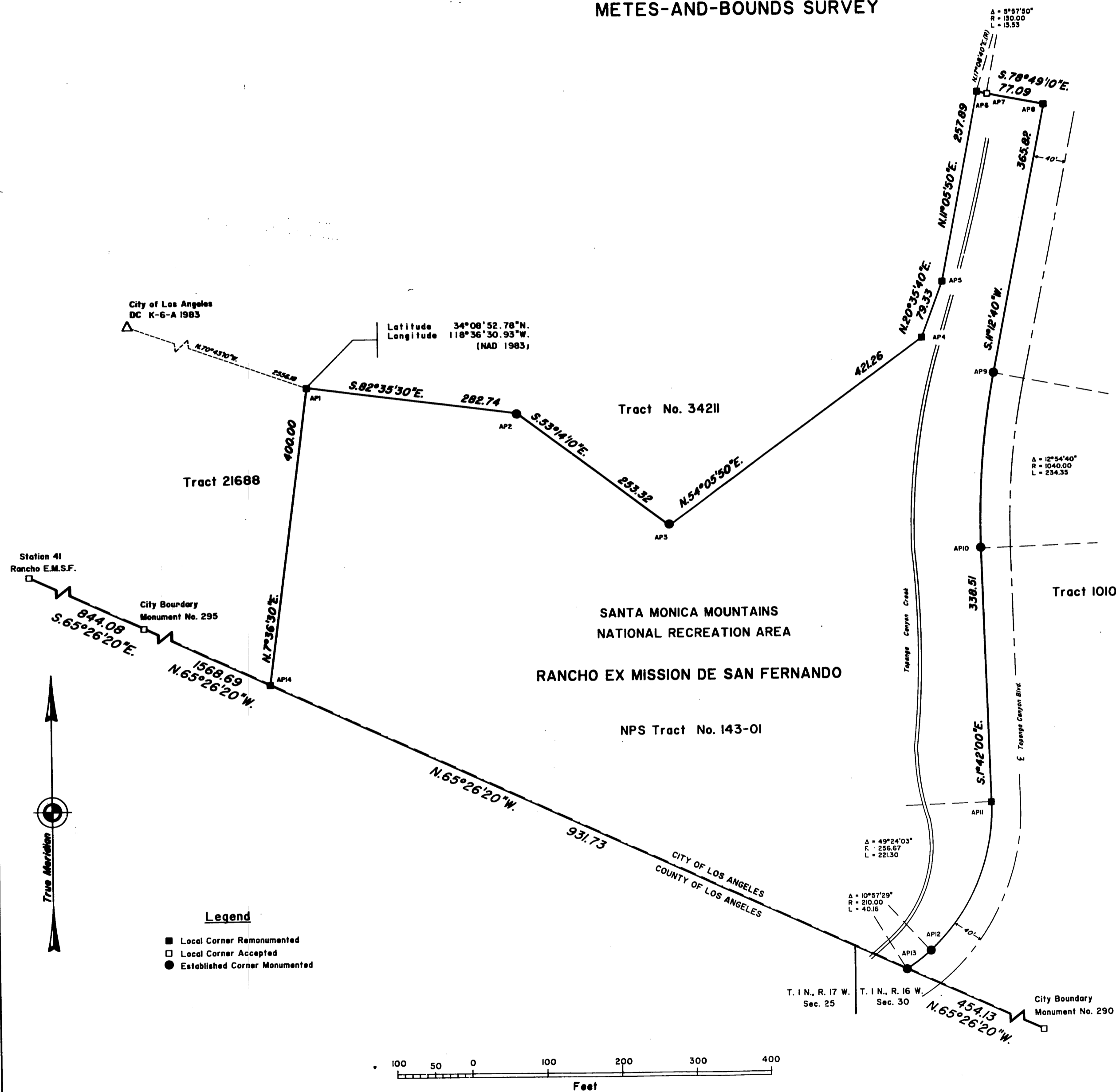
METES-AND-BOUNDS SURVEY

ORIGINAL

A history of surveys is contained in the field notes.

This plat represents the metes-and-bounds survey of a portion of the Santa Monica Mountains National Recreation Area boundary, National Park Service (NPS) Tract No. 143-01, Township 1 North, Ranges 16 and 17 West, San Bernardino Meridian, California.

Survey was executed by David H. Haller, Cadastral Surveyor, Beginning March 21, 1994, and completed June 26, 1995, pursuant to Special Instructions dated March 11, 1994, for Group No. 1199, California.



UNITED STATES DEPARTMENT OF THE INTERIOR
BUREAU OF LAND MANAGEMENT
Sacramento, California

This plat is strictly conformable to the approved field notes, and the survey, having been correctly executed in accordance with the requirements of law and the regulations of this Bureau, is hereby accepted.

For the Director

Clifford L. Johnson September 13, 1996
Chief Cadastral Surveyor-California

D.a.d.
D.H.