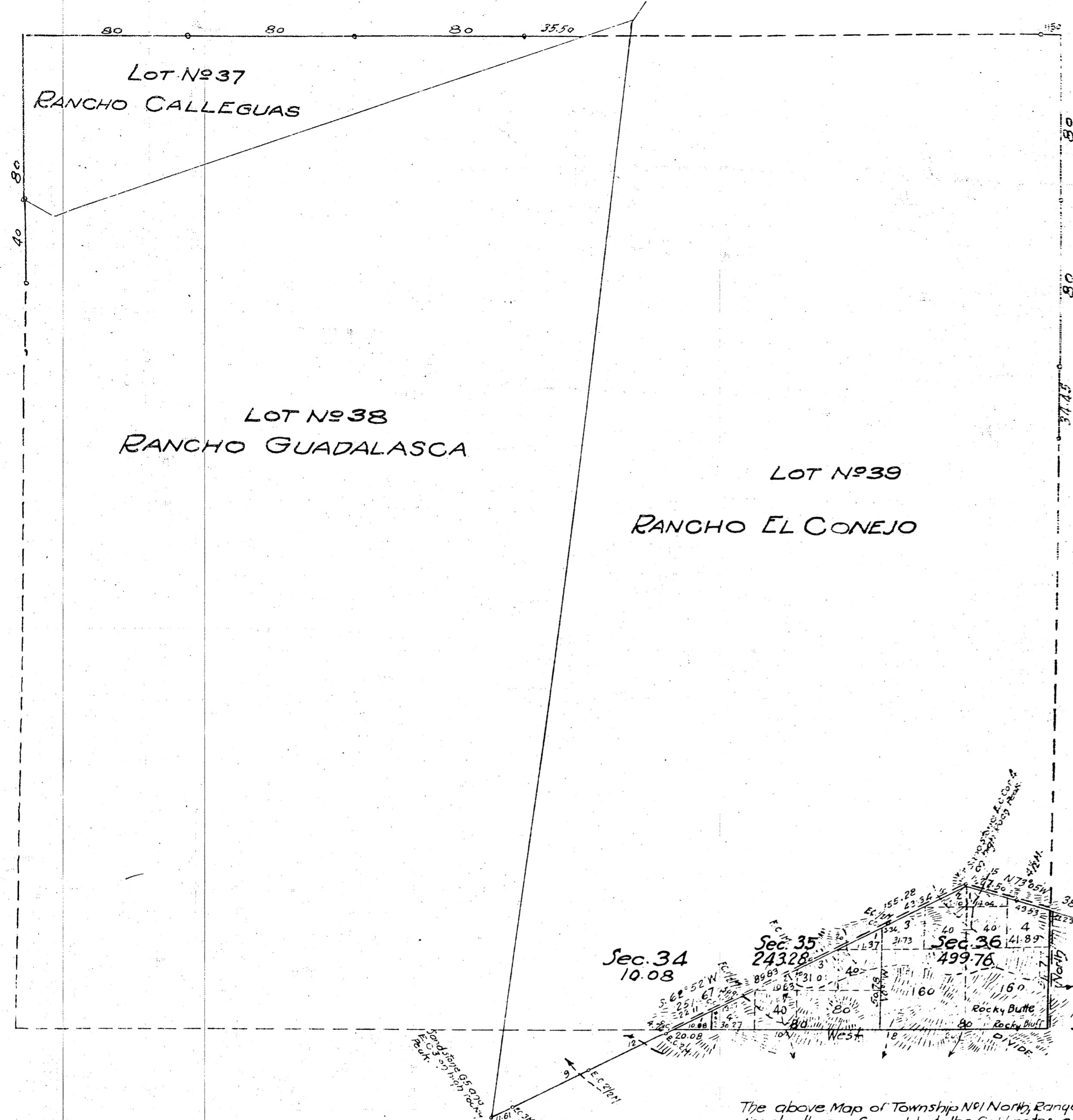


Township No 1 North, Range No 20 West, San Bernardino Meridian, California.

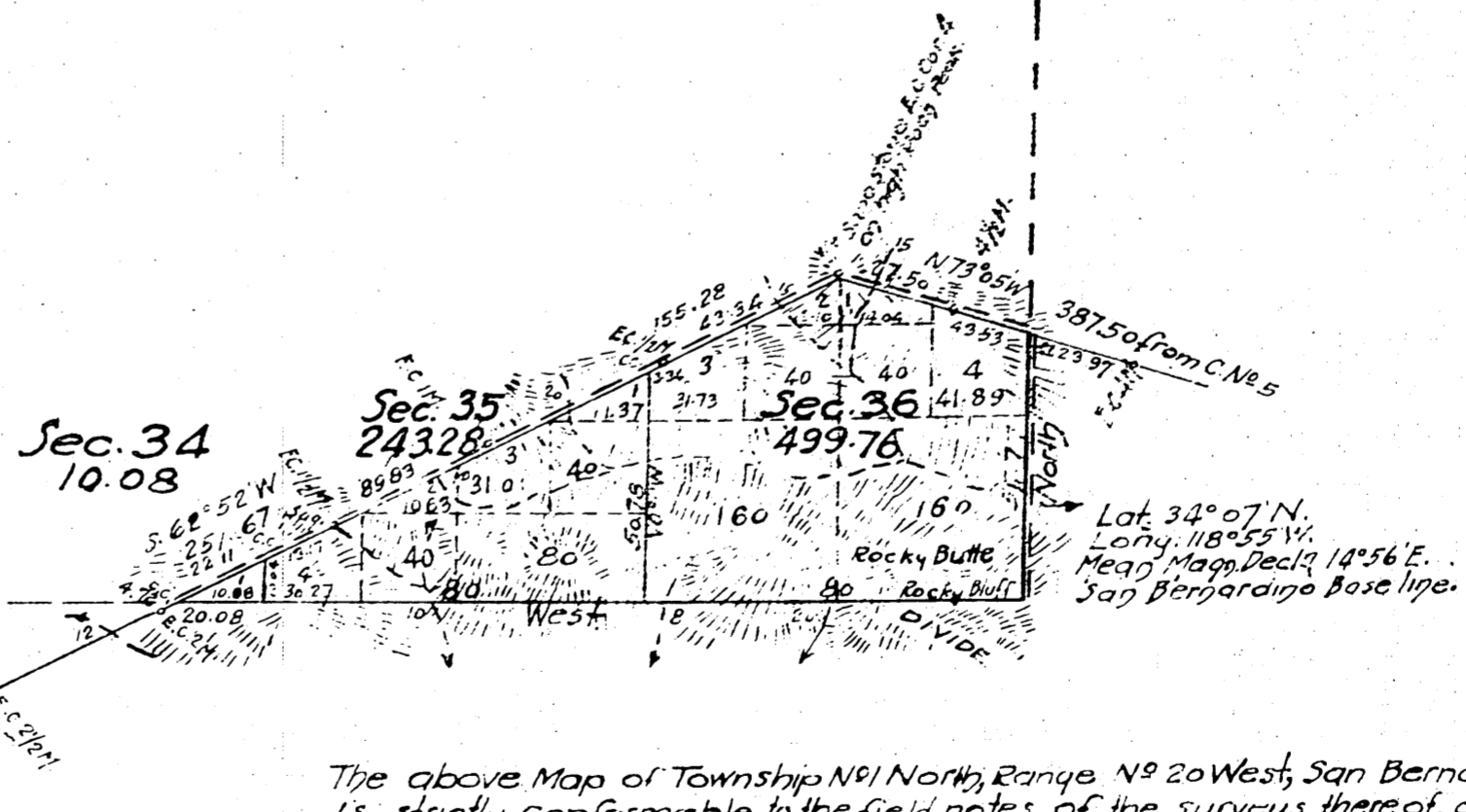
T1N
R20W
①



Aggregate Area of Public Land 753.12 Acres
 Estimated Private Grants 22,286.88
 Aggregate 23,040.00

Filed in U.S. Land Office
 Los Angeles Cal. April 10th 1900
 A. J. Crookshank
 Register.

Portion of Rancho El Conejo C.S. 9260
 also C.S. 9263 and C.S. 9350



Surveys Designated	By Whom Surveyed	Contract No.	Amount of Surveys			When Surveyed
			Acres	Sq. R.	Perches	
Part of E.N. & W. bds of T.P.	H. Hancock	Dec 30 1853				1854
Boundaries of Lots No 37, 38, 39	E. Terrell	Inst. Aug. 12 th 1860				1861
Base Line (S. bdy. of T.P.) new	J. R. Glover	137 Nov. 7 th 1896	2	20	08	1896
Part of Eddy of T.P., new	"	"		57	77	"
Ranch holes, resurveyed	"	"	2	38	81	"
Section Lines, new	"	"		60	82	"
Connecting Lines	"	"		21	23	Dec 21-1896

The above Map of Township No 1 North, Range No 20 West, San Bernardino Meridian, California, is strictly conformable to the field notes of the surveys thereof, on file in this office, which have been examined and approved.
 U.S. Surveyor-General's Office,
 San Francisco, California,
 March 3rd 1897.

W. S. Green,
 U.S. Surv. Genl., Cal.

I hereby certify the above to be a full, true and correct copy of the original plat of Township No 1 North, Range No 20 West, San Bernardino Meridian, California, approved March 3rd 1897 and on file in this office.
 U.S. Surveyor-General's Office,
 San Francisco, California,
 March 8th 1900.

J. M. Gleaves
 U.S. Surveyor-General for California