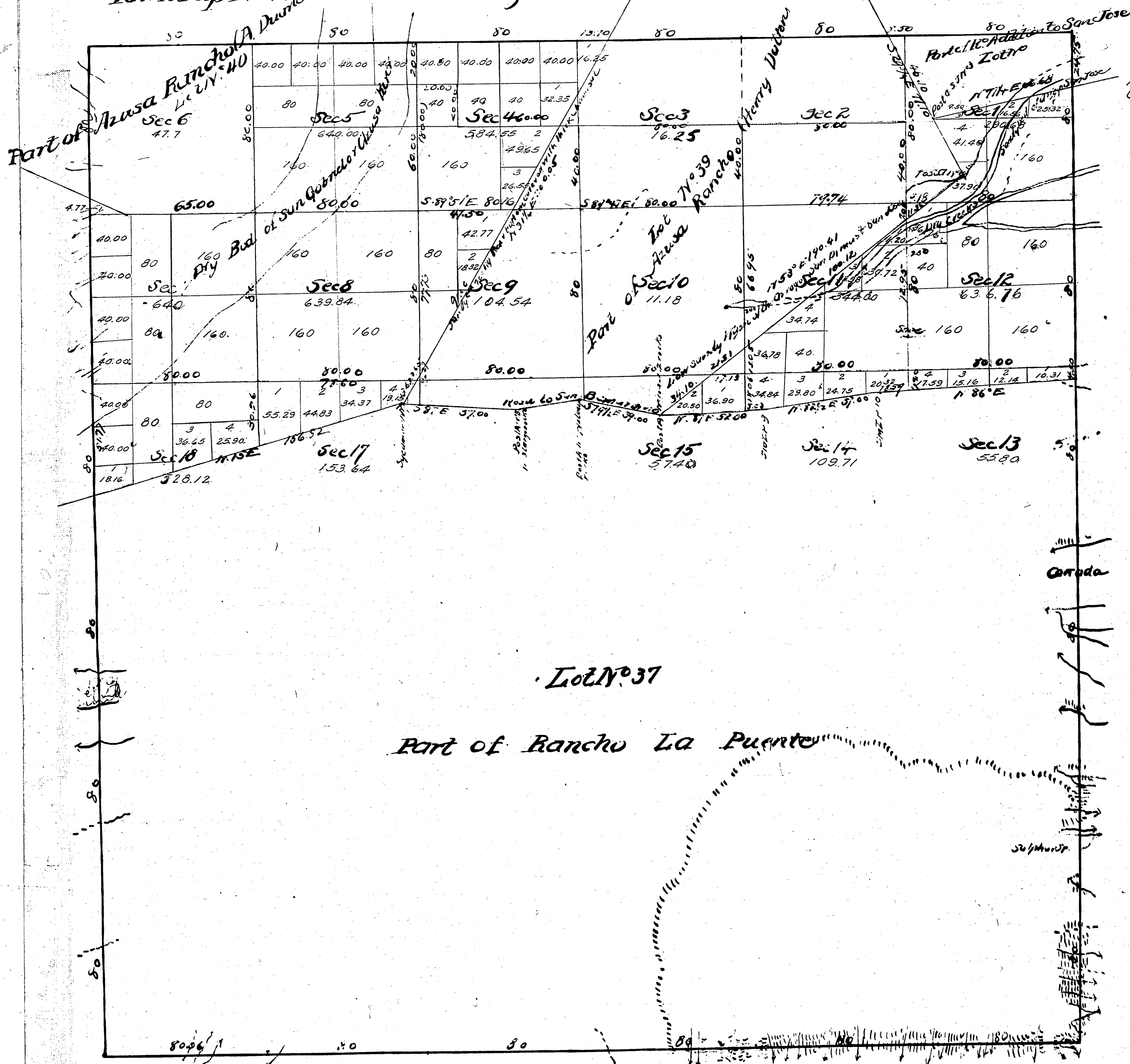


Township N<sup>o</sup> 1 South

Range N<sup>o</sup> 10 West

San Bernardino Meridian

T1S  
R10W



For amended plat correcting  
lot numbers see plat filed in  
U.S. Land Office Feb. 5, 1879  
Co. Sur. 4-10-1918.

4581.24 Acres  
18,459.48  
23040.72

Aggregate Area of Public Land  
Estimated - Lots N<sup>o</sup> 37, 38, 39 & 40  
Appropriate

This plat filed in U.S. Land Office May 13, 1869.  
Azusa Ro. lines C.S. 9249  
Rancho La Puente Bdy's - C.S. 9268  
Twp lines - C.S. 9280

Govt Field Notes:

C.S. 9058 - E. Boundary of township  
C.S. 9062 - E. B. Sec. 1 (the NE. Cor. to Ro. line)  
C.S. 9042 lines of the Rancho La Puente  
C.S. 9235 for Bdy Lines of Twp.  
C.S. 9363 - Section lines & Rancho lines.

Surveys Designated	By Whom Surveyed	Date of Completion	Amount of Survey	When Surveyed
North boundary of Township 1	James Washington	October 4th 1852		1852
Rest of Township lines	Henry Hancock	July 3rd 1853		1853
Boundaries of Lot N <sup>o</sup> 37		Instructions October 2nd 1857		1857
" " " 38	G. H. Thompson	July 8th 1868		1868
" " " 39				1868
Lines color approp. from San Bernardino & Colorado	H. Hancock	September 1st 1858		1858
Boundaries of Lot N <sup>o</sup> 40				1858
Rest of section lines		March 7th 1865		1865
Part of the boundary of Township 1 was crossed by survey	G. H. Thompson	Instructions April 9th 1869		April 19th 1869
Panel containing Charles Brown & Henry Jones				1869
Section Lines Closed upon Henry Jones				1864

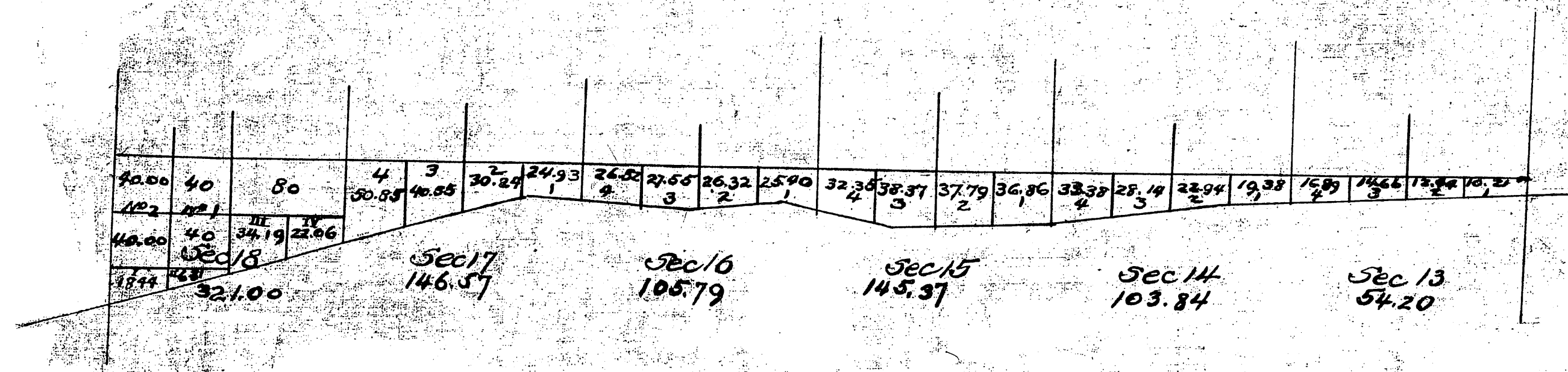
TIS  
RIOW  
②

Note: This is an amended plat  
correcting lat numbers  
Co. Sur. 4-10-1918

Township N<sup>o</sup> 01 South

Range N<sup>o</sup> 10 West

San Bernardino Meridian



Rancho La Puente

This plat filed in U.S. Land Office Feb 5, 1879.

Township N<sup>o</sup> 1 South

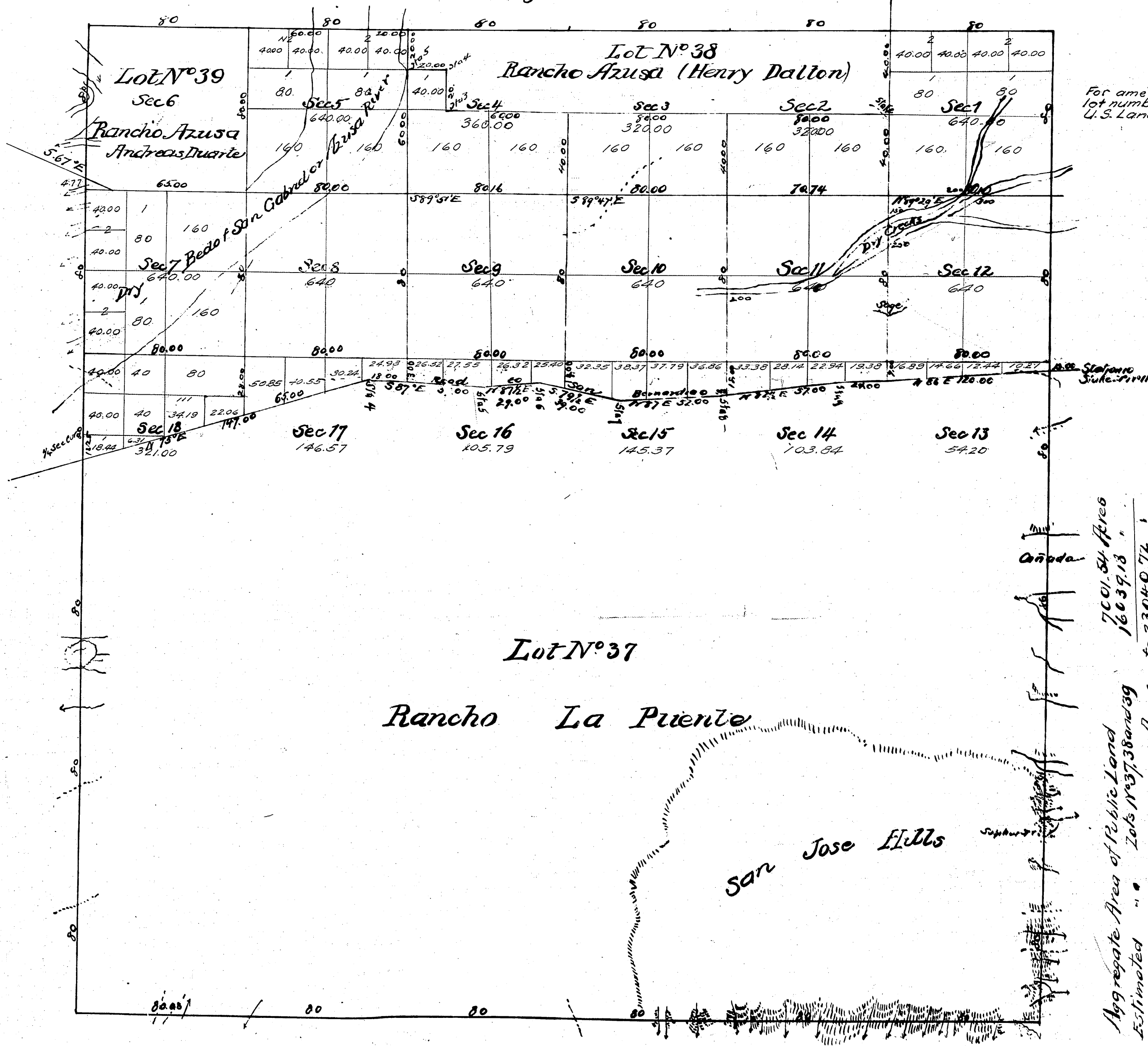
Range N<sup>o</sup> 10 West

San Bernardino Meridian.

T 15  
R 10 W  
3

This is an amended plat  
correcting lot numbers  
Co. Sur. 4-10-1918.

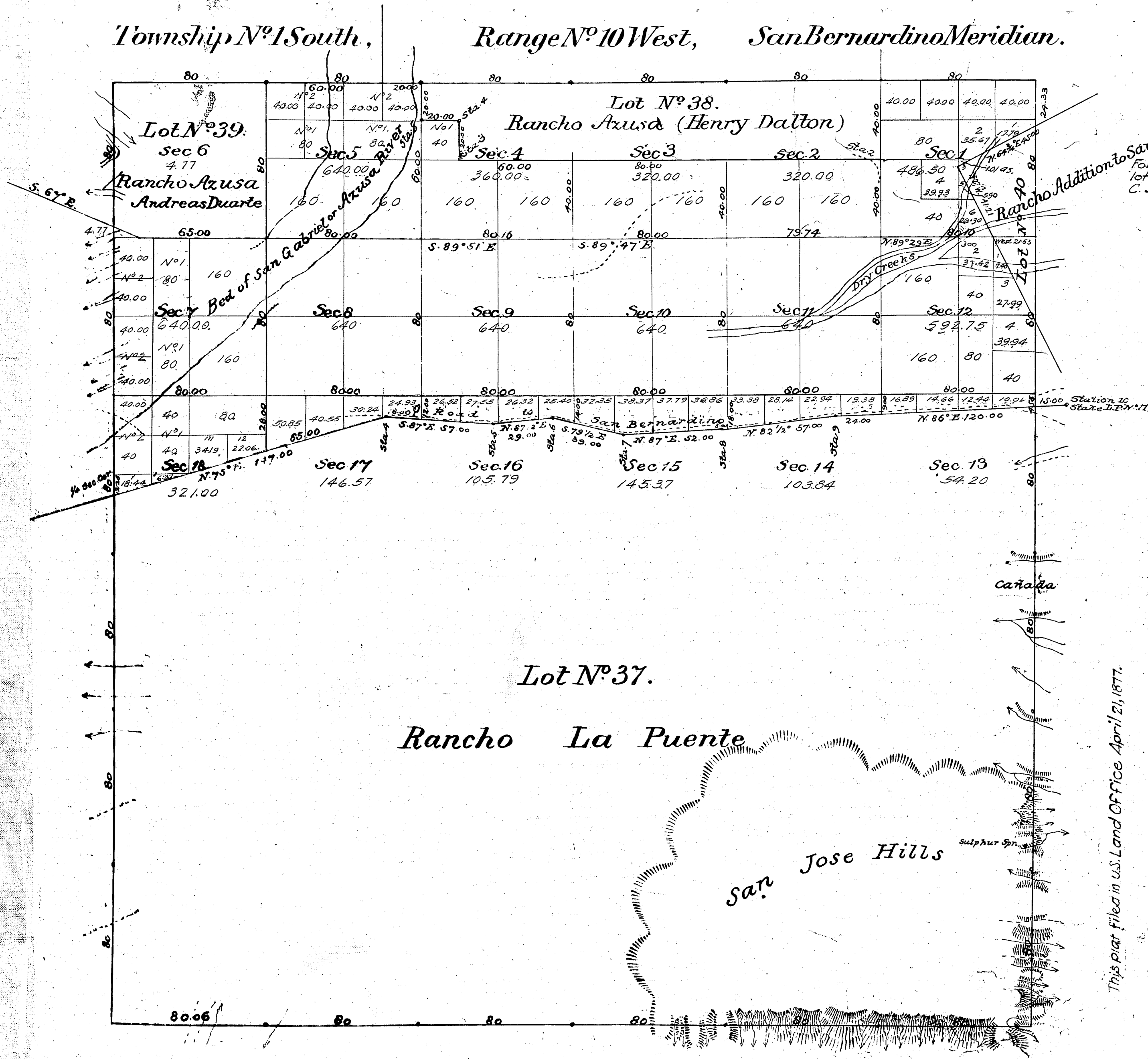
For amended plat correcting  
lot numbers see plat filed in  
U.S. Land Office Feb. 5 1879.  
Co. Sur. 4-10-18



Aggregate Area of Public Land 7001.84 Acres  
Estimated " Lots 11<sup>o</sup> 37, 38 and 39 16639.18 "  
Aggregate 23040.72 "

This plat filed in U.S. Land Office Oct. 31, 1873.  
Part of W bdy. — C.S. 9318  
Rancho bdy of Ro Azusa C.S. 9329

Surveys Designated	By Whom Surveyed	Date of Contract	Amount of Survey	When Surveyed.
North boundary of Township	Henry Washington	October 4 <sup>th</sup> 1852		1852
Rest of Township lines	Henry Hancock	July 5 <sup>th</sup> 1853		1853
Boundaries of Lot N <sup>o</sup> 37	" "	Instructions October 2 <sup>d</sup> 1857		1857
" " " 38	" "	September 1 <sup>st</sup> 1858		1858
" " " 39	" "	September 1 <sup>st</sup> 1858		1858
Section lines (not colored)	" "	March 7 <sup>th</sup> 1865	14013.22045 00113	April 29 <sup>th</sup> 1865.



For amended plat correcting lot numbers, see plat filed in C. S. Land Office, Feb. 5, 1879, Co. Sur. 4-10-1878.

Survey Designated	By whom Surveyed	Date of Contract	Area of Surveys When Surveyed
North boundary of Township	Henry Washington	October 7 <sup>th</sup> 1852	1852
East of Township line	" Hancock	July 5 <sup>th</sup> 1853	1853
Boundaries of Lots 37, 38	" "	Inst. bearing Oct. 2 <sup>nd</sup> 1857	1857
" "	" "	Sept. 4 <sup>th</sup> 1858	1858
" "	" "	March 7 <sup>th</sup> 1865	1865
" "	W. H. Norway	Special Instr. July 31 <sup>st</sup> 1875	April 29 <sup>th</sup> 1885 Dec. 31 <sup>st</sup> 1875

This plat filed in U.S. Land Office April 21, 1877.

Aggregate Area of Public Land 6800.89 Acres  
 Estimated Private Grants 16239.83  
 Aggregate 23040.72  
 For Reported by Norway 1 1/4 East  
 Recd & Filed Apr. 21 1877

Signed -  
 H. G. Rollins  
 U. S. Surv. Genl. Cal.