

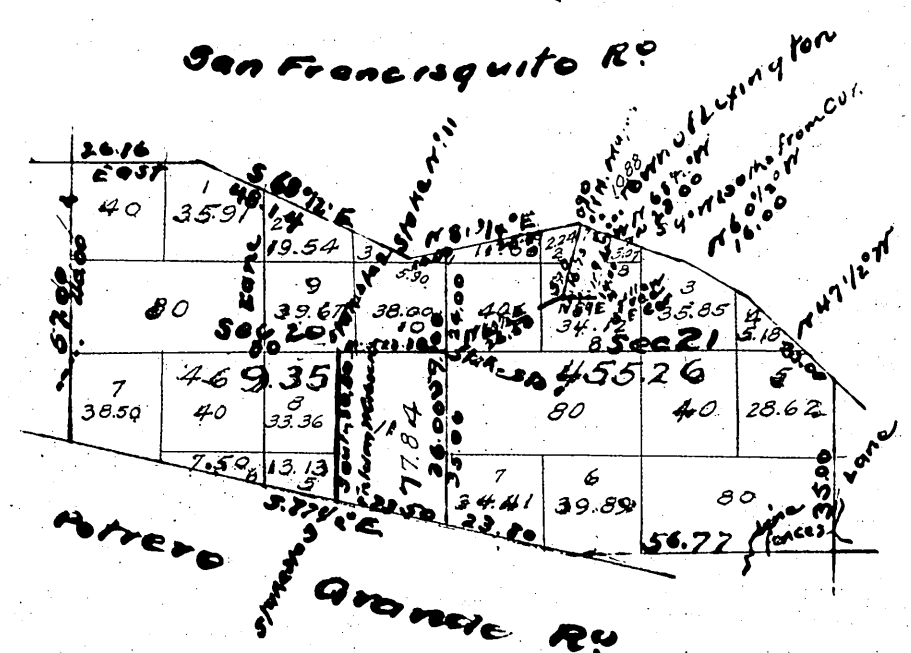
Aggregate Area of Public Land  
Estimated . Private Grants  
3899.40 Acres  
19189.60  
23089.00

Variation on section lines in other lines is 1/4 mile  
Bdy. of Rancho Potrero Chico - C.S. 9259 and C.S. 9422  
Bdy. of Rancho La Puente - C.S. 9268  
Portion of W bdy Rancho and interior Sec lines - C.S. 9307  
Bdy. of Rancho Azusa - C.S. 9329

Surreys Designated	By whom surveyed	Date of Contract	Amount of Surreys	When Surveyed
South bound of Township	Henry Washington	October 4 <sup>th</sup> 1852		1853
Rest of Township lines not colored	Henry Hancock	July 5 <sup>th</sup> 1853		1853
Boundaries of Lot No 37	"	last Oct. 3 <sup>d</sup> 1857		1857
" 38	"	" Sept. 1 <sup>st</sup> 1858		1857
" 40	"	" April 18 <sup>th</sup> 1857		1858
" 41	"	" Sept. 1 <sup>st</sup> 1858		1858
" 42	"	"		1858
" Azusa R.	"	"		1858
" Lot No 43	"	"		1858
" Potrero Chico	"	"		1866
Rancho boundaries Colored blue & resurveyed	Henry Hancock	June 19 <sup>th</sup> 1867	50chs 311ks	1867
Township lines Colored Blue	"	"	2 " 40 " 00 "	1867
Section lines	"	"	8 " 61 " 17 "	July 10 <sup>th</sup> 1867

Note: See M. R. 304 - 108 & 109  
for location of lot 11a Sec 32.  
County Surveyor  
Line of Rancho La Puente See C.S. 9042  
Par. E bdy. of Township - C.S. 9363

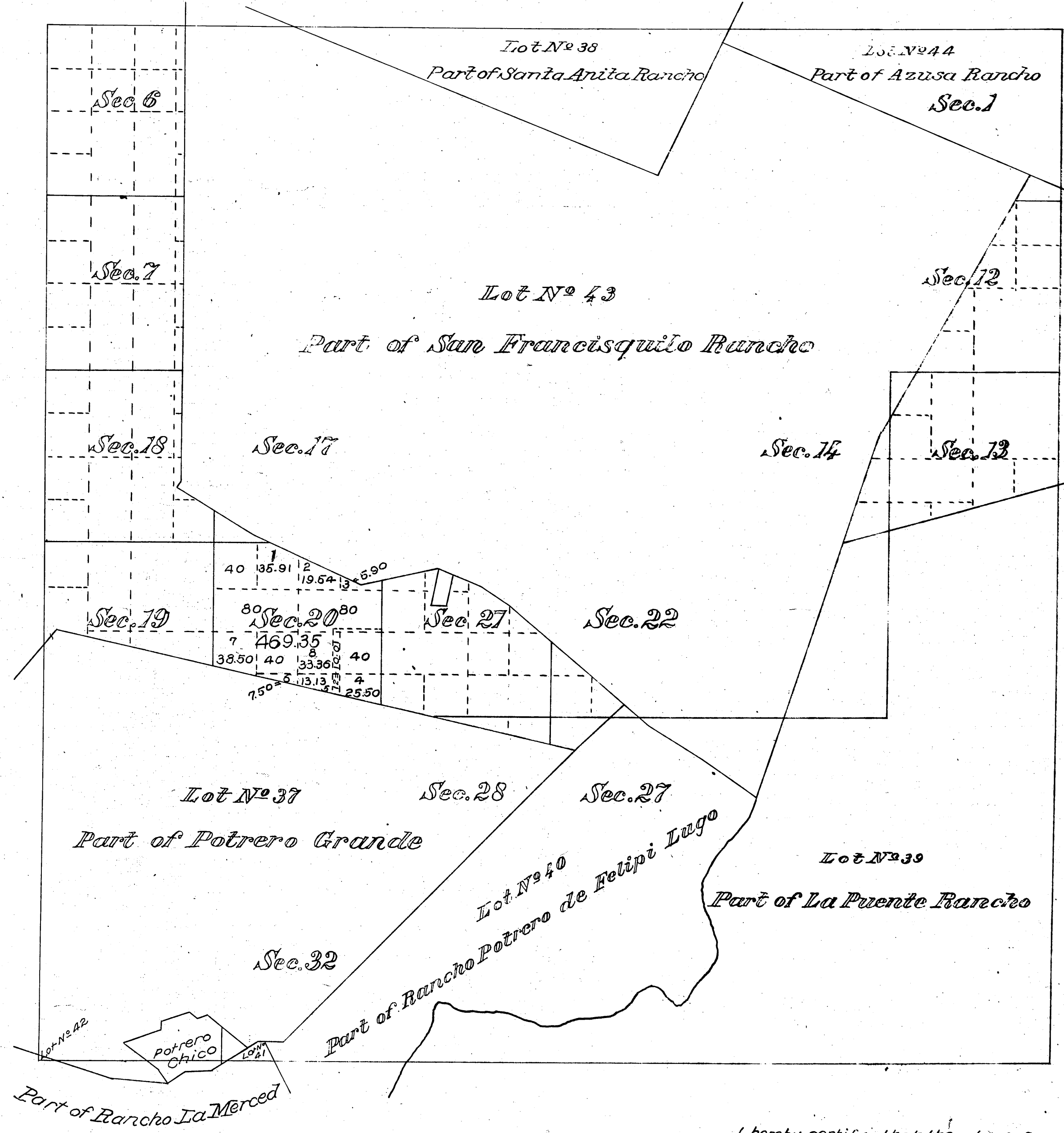
Map of amendments made in Sec 20 and 21 T. 5, N. 11, San Bernardino Mer. Lun. from surveys made under Act of Congress approved July 23<sup>d</sup> 1866 by Henry Tanner, Dep. Surv. under Instructions from the U. S. Surveyor General, dated July 1<sup>st</sup> 1867 of Tract of Land purchased from the Rev. of Claim Mission San Gabriel



Lines colored to show the boundaries of the Rev. of Claim Mission San Gabriel in Sec 20 and 21.

Appropriate Public Land with boundaries defined by Owners of Acres as from the original Claim Mission San Gabriel	88.72 Acres
Appropriate Public Land duly subdivided	3810.68 "
Estimated Private Grants	19189.60 "
Aggregate	23089.00 "

Supplemental Plat of  
Township N<sup>o</sup> 1 South, Range N<sup>o</sup> 11 West, San Bernardino Meridian, California



Received filed in  
U. S. Land Office Los  
Angeles Cal March 11 1905  
A. P. [Signature]  
Register

I hereby certify, that the above supplemental plat of  
Bernardino Meridian, California, correctly shows the  
amended in accordance with directions contained in  
U. S. Surveyor-General's Office.  
San Francisco California  
February 11, 1905.