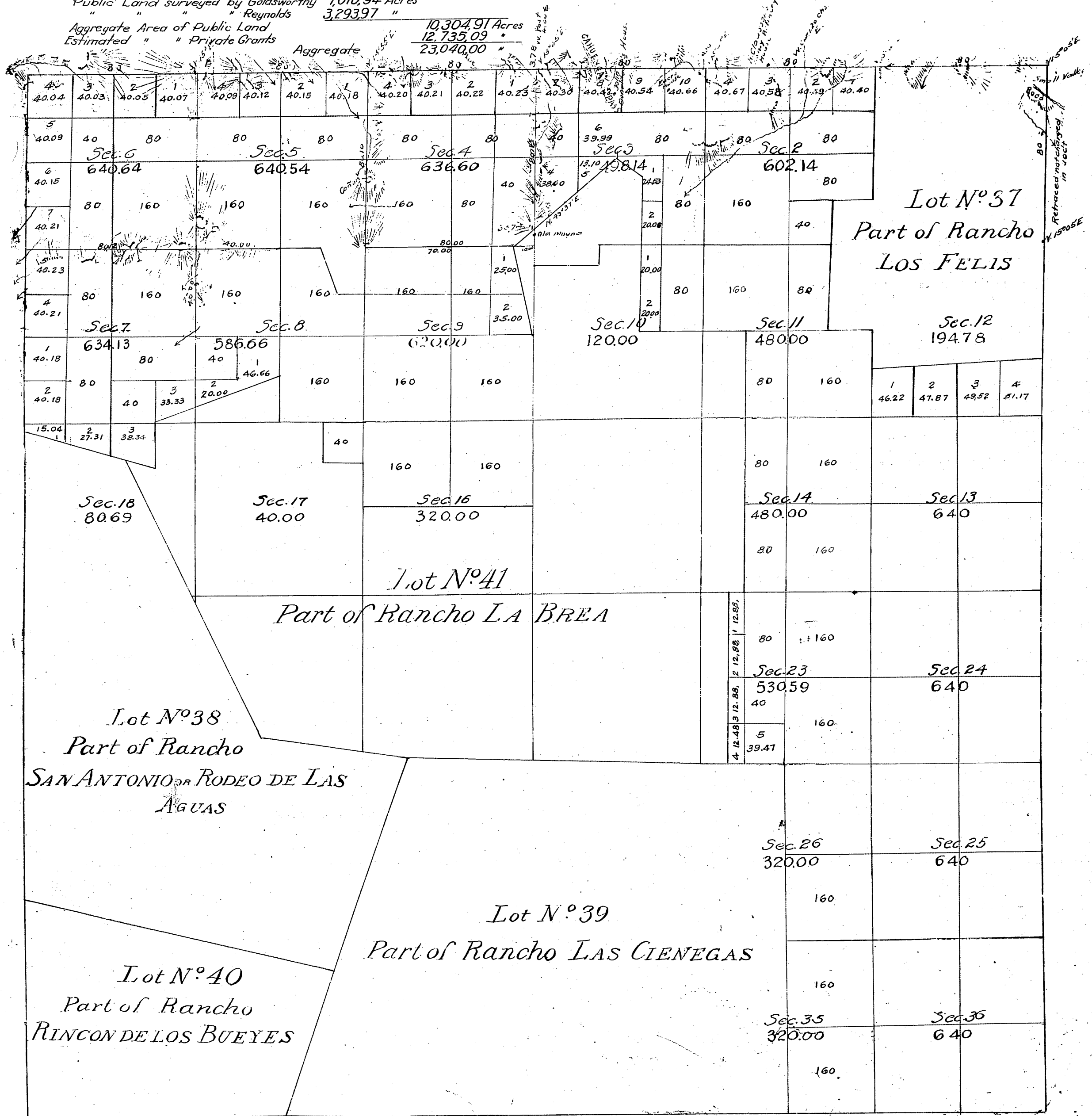


Township N^o 1 South, Range N^o 14 West S.B.M.

Public Land surveyed by Goldsworthy 7010.94 Acres
Reynolds 3293.97 "

Aggregate Area of Public Land 10,304.91 Acres
Estimated " Private Grants 12,735.09
Aggregate 23,040.00 "

TIS
R14W
①



By whom surveyed	When Surveyed	Date of Contract	Mag. Decl'n
Wm P. Reynolds	1879	October 30 th 1878	15° 15' 10" E.
Amount of Survey	When Surveyed	Date of Contract	Mag. Decl'n
6 mls. 00 cts. 00 lks.	1879	October 30 th 1878	15° 15' 10" E.
7 " 00 " 62 "	July 22 nd 1879		
0 " 00 " 30 "			

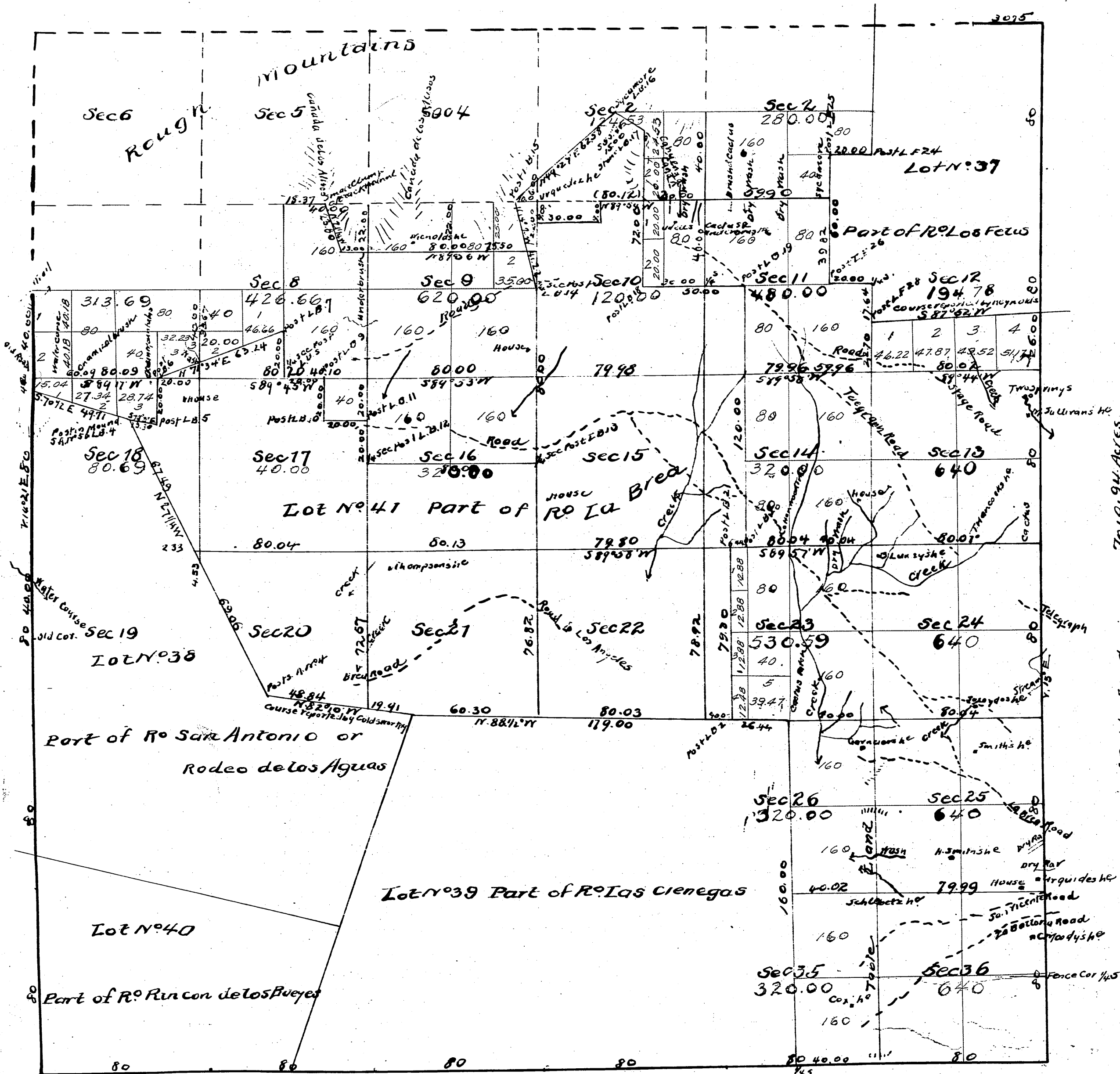
The above Map of Township N^o 1 South, Range N^o 14 West San Bernardino Meridian is strictly conformable to the field of the surveys thereof, on file in this Office which have been examined and approved
Surveyors General's Office,
San Francisco California.

June 10, 1881

Theo Wagner
U.S. Surveyor Gen'l Cal.

Lines run by Reynolds pass over Mountainous Land.
Field Notes Sec. 5 + 6 See Co. Sur. N^o 754A
C.S. 9081 - M.B. Sects. 3, 4, 5, 9; E.B. 4, 5, 8, 9.
M. 27-231 N. Bdy. of Twp.

For part of West Bdy. Int Sec. lines & part of Rancho lines See C. S. 9220



The above Map of Township N°1 South Range N°14 West San Bernardino Meridian is strictly conformable to the field notes of the surveys thereof on file in this office which have been examined & approved
 Surveyor-General's Office
 San Francisco California.

Aggregate Area of Public Land
 Estimated " Private Grants and
 Unsurveyed Mountain Land
 Aggregate
 7010.94 Acres
 160.29.06. "
 23040.00 "

Variation on Section lines 14°30' E.
 For Bays of Rodeo de las Aguas See C.S. 9023
 S. line of Sec 7 and part of W bdy - C.S. 9311.

Survey Designated	By whom surveyed	Date of Contract	Amount of Surveys	When Surveyed
Township lines not colored	Henry Washington	Oct. 4 th & cont. Jan 27 th 1853		1853
Boundaries of Lot N° 38	Henry Hancock	Cont'd Sept 1 st 1858		1858
" 37	George Hansen	April 14 th 1866		1866
" 38	G.N. Thompson	June 1 st 1868		1868
" 40	Compiled from field notes on file in office of sur. gen.			1871
" 41	John Goldsberry Jr	Cont'd Jan. 11 th 1871		1871
Township line colored yellow	T.P. Reynolds	March 15 th 1872		1872

M: 27-82
 Field notes from U.S. Land Office for Secs. 7-8-9 See
 Field notes Secs. 10-11-14-15 M. 27-146 C.S. 9049
 Field notes Sec. 5 & 6 see Co. Sur. No. 7544
 Field notes Base Line - N. Boundary (by offsets)
 Field notes Base Line - N. Boundary (by offsets)
 Field notes Base Line - N. Boundary Secs. 1 & 2 }
 C.S. 9059