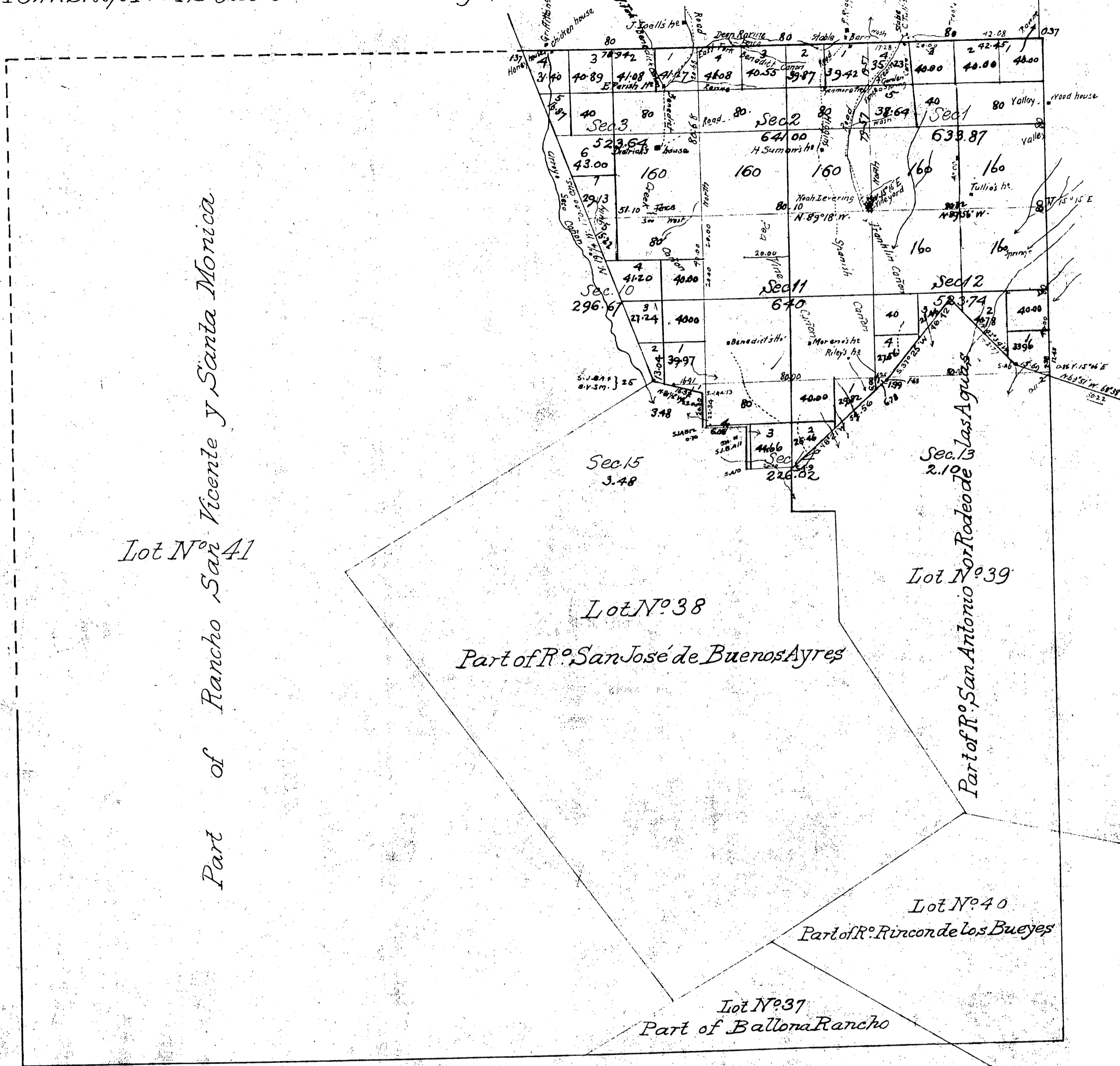


Township N<sup>o</sup> 15 South

Range N<sup>o</sup> 15 West

San Bernardino Meridian

T1S  
R15W  
①



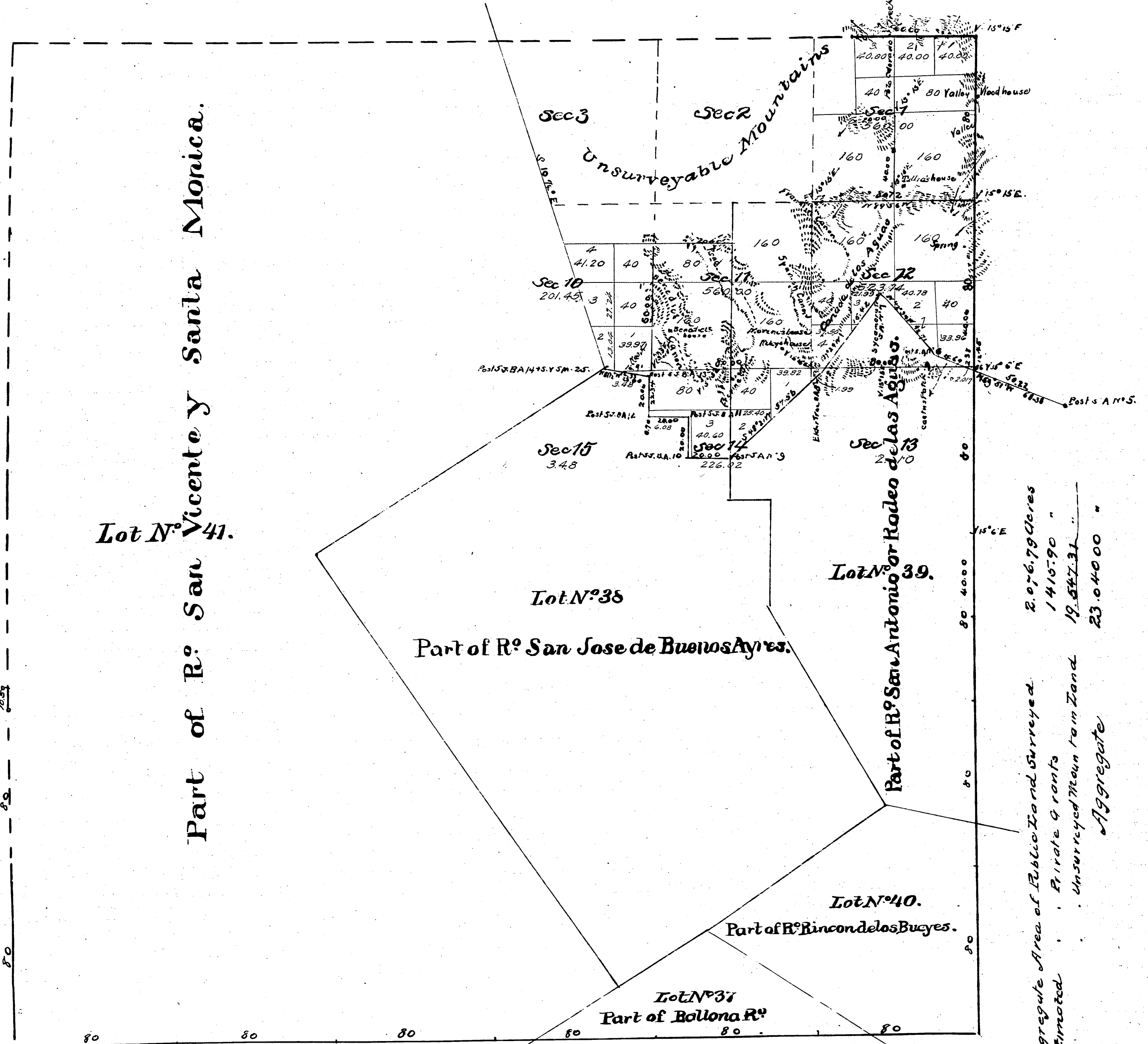
Area of Public Land surveyed by M. P. Reynolds in 1876 2,076.79 acres  
 " " " " P. G. Ryan in 1888 1,413.73 "  
 " " Private Grants - Estimated 19,547.31 "  
 " " Aggregate Area of Township 23,037.83 "

| Surveys Designated  | By Whom Surveyed     | Date of Contract   | Amount of Surveys<br>in Acs, Chans & Dims | When Surveyed | Mean Declination |
|---|----------------------|--------------------|---|---------------|------------------|
| For Exhibit of surveys previously made, see map of this Township approved June 22, 1877 |                      |                    |   |               |                  |
| North Bay of Tp. (black) partly resurveyed  | Albert George Ruston | September 24, 1887 | 3 00 00                                   | 1888          | 4° 45' E         |
| Private Grant line shaded black, resurveyed   | "                    | "                  | 2 10 "                                    | 1888          |                  |
| Section lines shaded black  | "                    | "                  | 3 71 45                                   | April 3, 1888 |                  |

Filed July 5 - 1890  
 W. H. Seaman's  
 Register

Signed: Wm. H. Pratt  
 U. S. Surv. Gen'l. Cal

For Bdy. of Rodeo de Las Aguas sec. C. S. 9023  
 Port of bdy's Rancho lines C. S. 9311



Aggregate Area of Public Land Surveyed 2,076.79 Acres  
 Estimated Private Grants 1415.90 "  
 Unsurreyed Mean Land 19,547.31 "  
 Aggregate 23,040.00 "

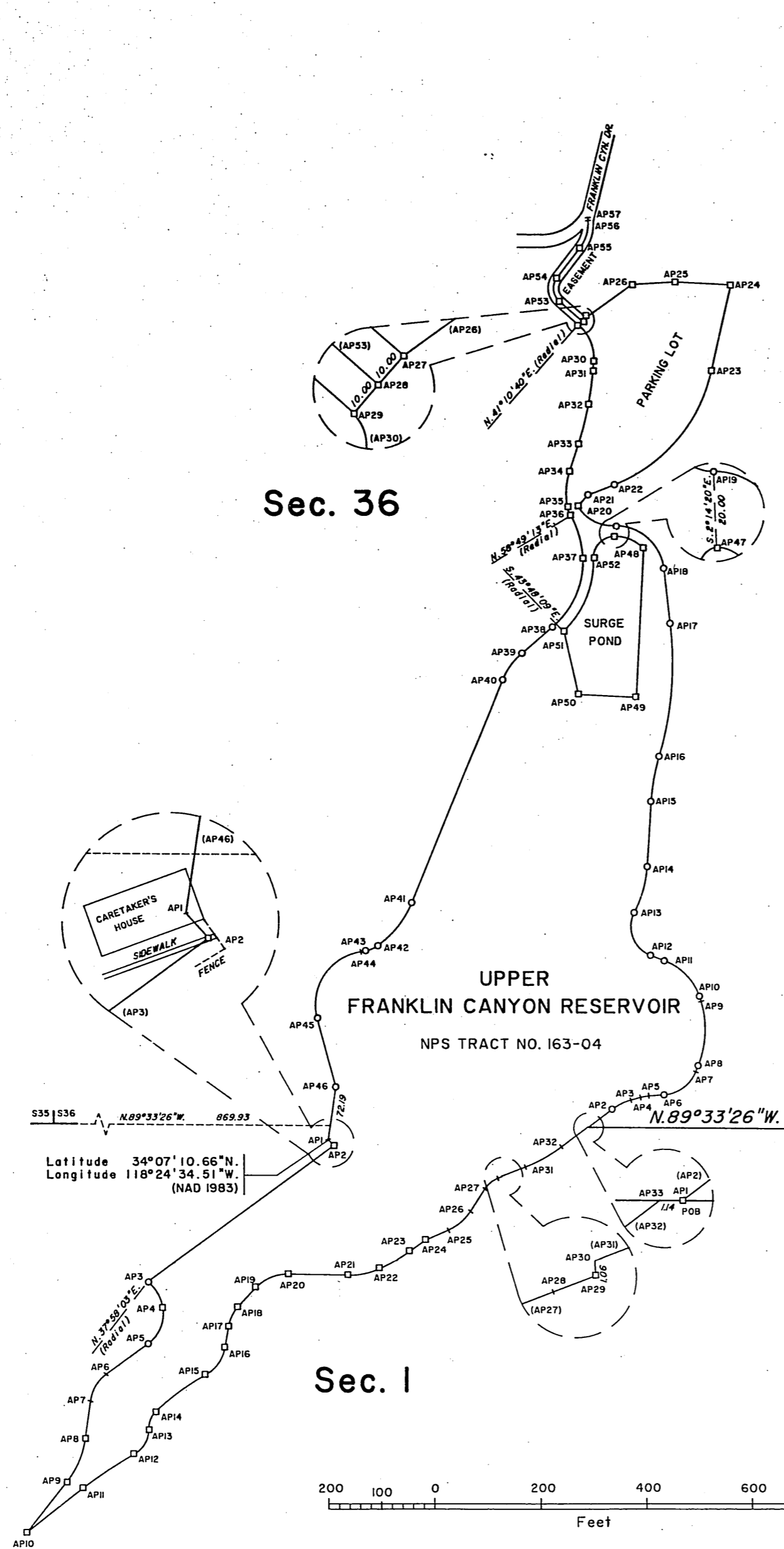
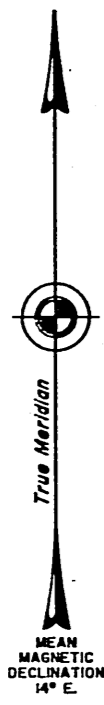
| Surveys Designated   | By whom surveyed | Date of Contract                   | Grant of Surveys                                      | When surveyed |
|--|------------------|------------------------------------|---|---------------|
| Township lines colored yellow                                | Henry Washington | October 4 <sup>th</sup> 1852       |   | 1853          |
| Boundaries of Lot N <sup>o</sup> 37                          | Henry Hancock    | (Inst) April 18 <sup>th</sup> 1857 |   | 1858          |
| " " " " 38   | " " "            | Sept 1 <sup>st</sup> 1858          |   | 1858          |
| " " " " 39   | G. H. Thompson   | June 1 <sup>st</sup> 1868          |   | 1868          |
| " " " " 41   | " " "            | " " "                              |   | 1868          |
| " " " " 40   | " " "            | " " "                              |   | 1871          |
| Compiled from field notes on file in Office of Survr General |                  |                                    |   |               |
| Township line colored brown                                  | Jonn Goldsmith   | January 8 <sup>th</sup> 1871       |   | 1871          |
| " " " " " " blue   | W. P. Reynolds   | September 11 <sup>th</sup> 1876    | 4 m <sup>13</sup> 60 c <sup>4</sup> 00 r <sup>5</sup> | 1876          |
| Section and subdivision lines                                | " " "            | " " "                              | 7 - 5 - 57  | 1876          |
| Boundaries of Private Grants colored blue                    | " " "            | " " "                              | 3 - 75 - 12   | 1876          |

Field Notes, Sec 2, Part of Sects 3-10 and Range C.S. 9097  
 Field Notes, Sec 12, Part of Sects 11-14 and Range C.S. 9098  
 Affidavit regarding S.E. Cor Sec 12 - see M. 34-229

TOWNSHIPS 1 NORTH AND 1 SOUTH, RANGE 15 WEST, OF THE SAN BERNARDINO MERIDIAN, CALIFORNIA

METES-AND-BOUNDS SURVEY

ORIGINAL



| COURSE            | COURSE TYPE | BEARING or DELTA  | LINE or ARC DIST. FEET | RADIUS FEET |
|-------------------|-------------|-------------------|------------------------|-------------|
| AP1-AP2, Sec. 36  | LINE        | N. 33° 12' 18" E. | 56.42                  | N/A         |
| AP2-AP3           | CURVE       | 21° 46' 22"       | 38.16                  | 100.57      |
| AP3-AP4           | LINE        | N. 74° 56' 59" E. | 18.99                  | N/A         |
| AP4-AP5           | CURVE       | 11° 00' 16"       | 18.09                  | 83.75       |
| AP5-AP6           | LINE        | N. 85° 56' 54" E. | 29.49                  | N/A         |
| AP6-AP7           | CURVE       | 63° 16' 39"       | 77.66                  | 70.32       |
| AP7-AP8           | LINE        | N. 22° 40' 16" E. | 12.23                  | N/A         |
| AP8-AP9           | CURVE       | 35° 23' 46"       | 124.03                 | 178.87      |
| AP9-AP10          | LINE        | N. 17° 03' 50" W. | 5.08                   | N/A         |
| AP10-AP11         | CURVE       | 52° 01' 49"       | 102.13                 | 112.46      |
| AP11-AP12         | LINE        | N. 63° 05' 19" W. | 28.76                  | N/A         |
| AP12-AP13         | CURVE       | 57° 08' 58"       | 97.54                  | 57.53       |
| AP13-AP14         | CURVE       | 24° 18' 02"       | 30.03                  | 212.27      |
| AP14-AP15         | LINE        | N. 3° 45' 12" E.  | 121.69                 | N/A         |
| AP15-AP16         | CURVE       | 12° 56' 31"       | 86.06                  | 394.65      |
| AP16-AP17         | CURVE       | 23° 05' 50"       | 248.73                 | 618.64      |
| AP17-AP18         | LINE        | N. 6° 23' 47" W.  | 109.97                 | N/A         |
| AP18-AP19         | CURVE       | 85° 50' 37"       | 137.97                 | 92.09       |
| AP19-AP20         | CURVE       | 61° 03' 48"       | 80.16                  | 75.21       |
| AP20-AP21         | LINE        | N. 40° 46' 02" E. | 27.18                  | N/A         |
| AP21-AP22         | LINE        | N. 68° 40' 28" E. | 35.29                  | N/A         |
| AP22-AP23         | CURVE       | 55° 42' 23"       | 294.59                 | 303.00      |
| AP23-AP24         | LINE        | N. 12° 56' 05" E. | 165.90                 | N/A         |
| AP24-AP25         | LINE        | N. 06° 59' 20" W. | 107.12                 | N/A         |
| AP25-AP26         | LINE        | S. 06° 41' 23" W. | 81.03                  | N/A         |
| AP26-AP27         | LINE        | S. 54° 06' 24" W. | 108.01                 | N/A         |
| AP27-AP28         | LINE        | S. 41° 10' 40" W. | 10.00                  | N/A         |
| AP28-AP29         | LINE        | S. 41° 10' 40" W. | 10.00                  | N/A         |
| AP29-AP30         | CURVE       | 53° 45' 50"       | 76.01                  | 81.00       |
| AP30-AP31         | LINE        | S. 4° 50' 30" W.  | 17.28                  | N/A         |
| AP31-AP32         | CURVE       | 5° 45' 00"        | 63.76                  | 635.36      |
| AP32-AP33         | CURVE       | 7° 26' 45"        | 76.83                  | 591.21      |
| AP33-AP34         | LINE        | S. 18° 03' 15" W. | 54.22                  | N/A         |
| AP34-AP35         | CURVE       | 32° 18' 25"       | 73.58                  | 150.49      |
| AP35-AP36         | LINE        | S. 22° 40' 19" E. | 3.00                   | N/A         |
| AP36-AP37         | CURVE       | 29° 22' 01"       | 33.13                  | 181.73      |
| AP37-AP38         | CURVE       | 50° 54' 16"       | 145.99                 | 162.07      |
| AP38-AP39         | LINE        | S. 49° 05' 30" W. | 79.69                  | N/A         |
| AP39-AP40         | CURVE       | 26° 51' 50"       | 61.41                  | 130.97      |
| AP40-AP41         | LINE        | S. 22° 43' 40" W. | 454.59                 | N/A         |
| AP41-AP42         | CURVE       | 32° 23' 06"       | 105.12                 | 185.98      |
| AP42-AP43         | CURVE       | 27° 08' 00"       | 29.04                  | 61.32       |
| AP43-AP44         | LINE        | S. 81° 44' 46" W. | 5.74                   | N/A         |
| AP44-AP45         | CURVE       | 50° 41' 00"       | 169.54                 | 100.47      |
| AP45-AP46         | LINE        | S. 14° 56' 14" E. | 133.02                 | N/A         |
| AP46-AP1, Sec. 1  | LINE        | S. 8° 26' 06" W.  | 100.01                 | N/A         |
| AP1-AP2           | LINE        | S. 42° 19' 24" E. | 13.27                  | N/A         |
| AP2-AP3           | LINE        | S. 53° 19' 32" W. | 435.66                 | N/A         |
| AP3-AP4           | CURVE       | 41° 59' 31"       | 56.50                  | 77.09       |
| AP4-AP5           | CURVE       | 64° 21' 15"       | 78.62                  | 70.00       |
| AP5-AP6           | LINE        | S. 54° 18' 49" W. | 97.46                  | N/A         |
| AP6-AP7           | CURVE       | 46° 15' 15"       | 60.55                  | 75.00       |
| AP7-AP8           | LINE        | S. 8° 03' 34" W.  | 72.45                  | N/A         |
| AP8-AP9           | CURVE       | 30° 37' 15"       | 88.18                  | 165.00      |
| AP9-AP10          | LINE        | S. 30° 40' 49" W. | 120.65                 | N/A         |
| AP10-AP11         | LINE        | N. 52° 10' 36" E. | 133.21                 | N/A         |
| AP11-AP12         | CURVE       | 8° 53' 20"        | 117.39                 | 756.67      |
| AP12-AP13         | CURVE       | 62° 04' 20"       | 57.61                  | 52.89       |
| AP13-AP14         | CURVE       | 48° 30' 05"       | 36.67                  | 43.32       |
| AP14-AP15         | CURVE       | 13° 59' 15"       | 117.12                 | 479.74      |
| AP15-AP16         | CURVE       | 50° 57' 50"       | 64.89                  | 72.35       |
| AP16-AP17         | LINE        | N. 10° 11' 06" E. | 40.32                  | N/A         |
| AP17-AP18         | CURVE       | 32° 41' 55"       | 43.15                  | 75.60       |
| AP18-AP19         | LINE        | N. 42° 53' 01" E. | 45.59                  | N/A         |
| AP19-AP20         | CURVE       | 48° 50' 26"       | 70.59                  | 83.65       |
| AP20-AP21         | LINE        | S. 88° 46' 33" E. | 112.13                 | N/A         |
| AP21-AP22         | CURVE       | 25° 26' 35"       | 61.64                  | 138.81      |
| AP22-AP23         | CURVE       | 11° 13' 42"       | 65.77                  | 332.64      |
| AP23-AP24         | LINE        | N. 54° 21' 10" E. | 36.47                  | N/A         |
| AP24-AP25         | LINE        | N. 66° 12' 21" E. | 47.34                  | N/A         |
| AP25-AP26         | CURVE       | 33° 44' 12"       | 55.39                  | 94.05       |
| AP26-AP27         | LINE        | N. 32° 28' 09" E. | 49.91                  | N/A         |
| AP27-AP28         | CURVE       | 36° 40' 08"       | 32.33                  | 50.51       |
| AP28-AP29         | LINE        | N. 69° 08' 17" E. | 8.35                   | N/A         |
| AP29-AP30         | LINE        | N. 2° 49' 34" W.  | 1.06                   | N/A         |
| AP30-AP31         | LINE        | N. 69° 19' 32" E. | 47.29                  | N/A         |
| AP31-AP32         | CURVE       | 16° 07' 19"       | 79.25                  | 281.65      |
| AP32-AP33         | LINE        | N. 53° 12' 13" E. | 62.72                  | N/A         |
| AP33-AP1, Sec. 36 | LINE        | S. 89° 33' 26" E. | 1.14                   | N/A         |

| SEGREGATION |       |                   |        |        |
|-------------|-------|-------------------|--------|--------|
| AP47-AP48   | CURVE | 49° 30' 20"       | 62.29  | 72.09  |
| AP48-AP49   | LINE  | S. 2° 53' 13" W.  | 202.70 | N/A    |
| AP49-AP50   | LINE  | N. 87° 06' 45" W. | 109.61 | N/A    |
| AP50-AP51   | LINE  | N. 12° 36' 08" W. | 123.89 | N/A    |
| AP51-AP52   | CURVE | 48° 00' 22"       | 152.55 | 182.07 |
| AP52-AP47   | CURVE | 89° 54' 05"       | 63.52  | 40.63  |

| CENTER LINE OF EASEMENT |       |                   |                   |       |
|-------------------------|-------|-------------------|-------------------|-------|
| AP28-AP53               | LINE  | N. 48° 49' 20" W. | 58.32             | N/A   |
| AP53-AP54               | CURVE | 86° 10' 50"       | 48.87             | 32.49 |
| AP54-AP55               | LINE  | N. 37° 23' 54" E. | 72.25             | N/A   |
| AP55-AP56               | CURVE | 41° 56' 50"       | 54.91             | 75.00 |
| AP56-AP57               | LINE  | N. 4° 33' 16" W.  | 5.51 (AS-BUILT E) | N/A   |

T. 1 N., R. 15 W., S.B.M. 1154.08  
 T. 1 S., R. 15 W., S.B.M. 1/4 Sec. 1

LEGEND  
 ○ U.S.D.I. MONUMENT SET  
 □ FOUND MONUMENT  
 - ANGLE POINT NOT MONUMENTED.

A history of surveys is contained in the field notes.

This plat represents the metes-and-bounds survey of a portion of the Santa Monica Mountains National Recreation Area Boundary, National Park Service Tract No. 163-04, Townships 1 North and 1 South, Range 15 West, San Bernardino Meridian, California.

Lottings and areas are as shown on the township plats approved October 7, 1896 and March 26, 1899.

Resurvey was executed by David H. Haller, Cadastral Surveyor, beginning June 3, 1993, and completed August 15, 1993, pursuant to Special Instructions dated April 13, 1992, Supplemental Special Instructions No. 1 dated July 13, 1992, and Supplemental Special Instructions No. 2 dated June 2, 1993, for Group No. 1141, California.

UNITED STATES DEPARTMENT OF THE INTERIOR  
 BUREAU OF LAND MANAGEMENT  
 Sacramento, California

This plat is strictly conformable to the approved field notes, and the survey, having been correctly executed in accordance with the requirements of law and the regulations of this Bureau, is hereby accepted.

For the Director  
 February 3, 1998  
*Lucy G. Bishop*  
 Chief Cadastral Surveyor—California

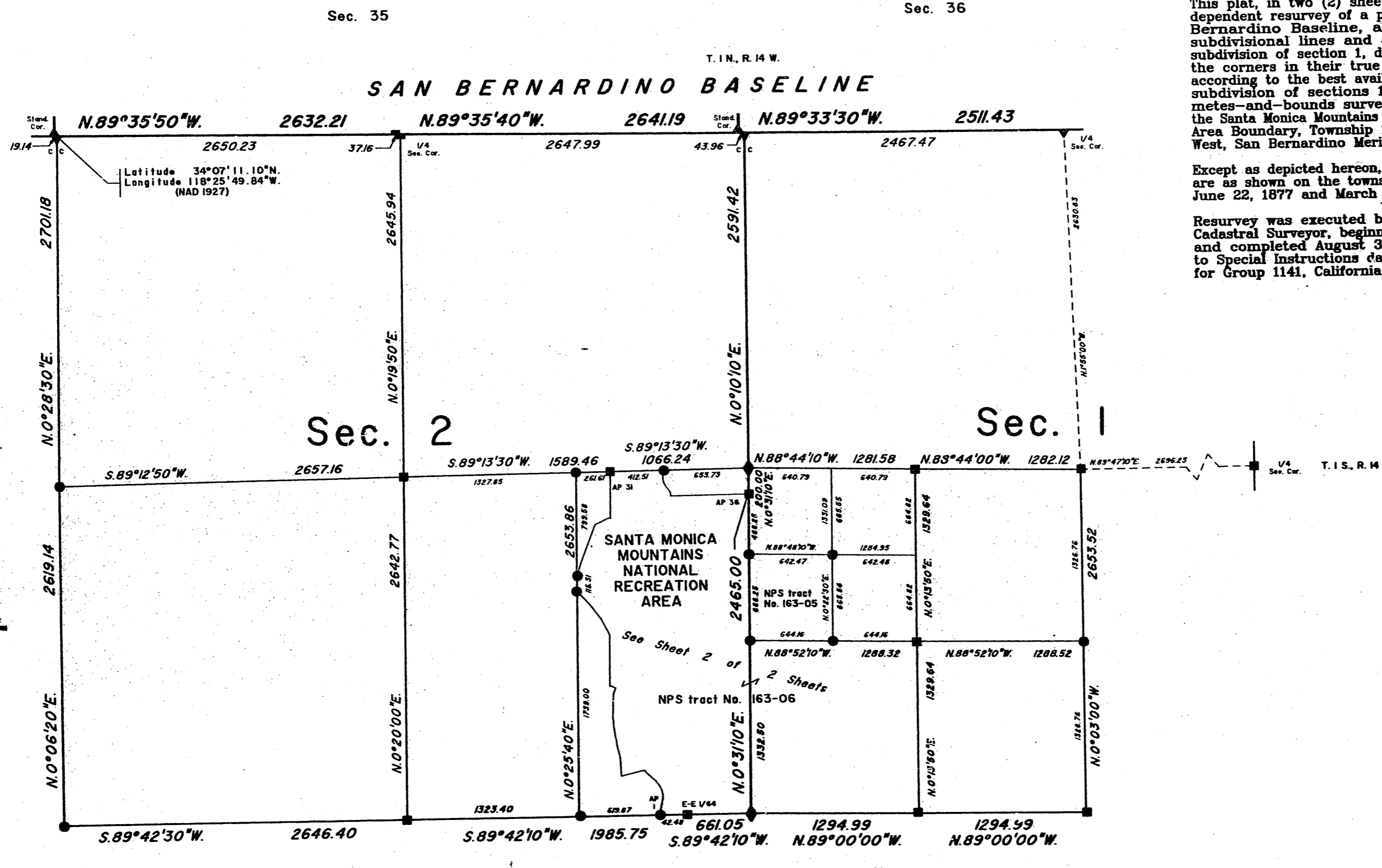
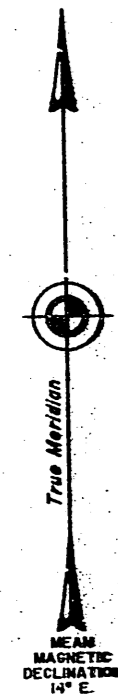
TOWNSHIP 1 SOUTH, RANGE 15 WEST, OF THE SAN BERNARDINO MERIDIAN, CALIFORNIA.  
DEPENDENT RESURVEY, SUBDIVISION OF CERTAIN SECTIONS AND METES-AND-BOUNDS SURVEY

A history of surveys is contained in the field notes.

This plat, in two (2) sheets, represents the dependent resurvey of a portion of the San Bernardino Baseline, a portion of the subdivisional lines and a portion of the subdivision of section 1, designed to restore the corners in their true original locations according to the best available evidence, the subdivision of sections 1 and 2, and the metes-and-bounds survey of a portion of the Santa Monica Mountains National Recreation Area Boundary, Township 1 South, Range 15 West, San Bernardino Meridian, California.

Except as depicted hereon, lottings and areas are as shown on the township plats approved June 22, 1877 and March 26, 1889.

Resurvey was executed by David H. Haller, Cadastral Surveyor, beginning April 24, 1992, and completed August 31, 1993, pursuant to Special Instructions dated April 13, 1992, for Group 1141, California.



LEGEND

- ◆ Original Evidence Recovered: Remonumented
- Local Evidence Recovered: Remonumented
- Position Determined and Monumented

BUREAU OF LAND MANAGEMENT  
Sacramento, California

This plat is strictly conformable to the approved field notes, and the survey, having been correctly executed in accordance with the requirements of law and the regulations of this Bureau, is hereby accepted.

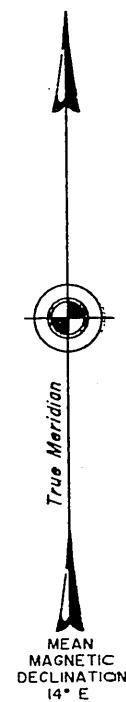
For the Director  
*James J. Pity* September 29, 2003  
Chief Cadastral Surveyor—California

D.e.d.  
T.O.T.

TOWNSHIP 1 SOUTH, RANGE 15 WEST, OF THE SAN BERNARDINO MERIDIAN, CALIFORNIA.

DEPENDENT RESURVEY, SUBDIVISION OF CERTAIN SECTIONS AND METES-AND-BOUNDS SURVEY

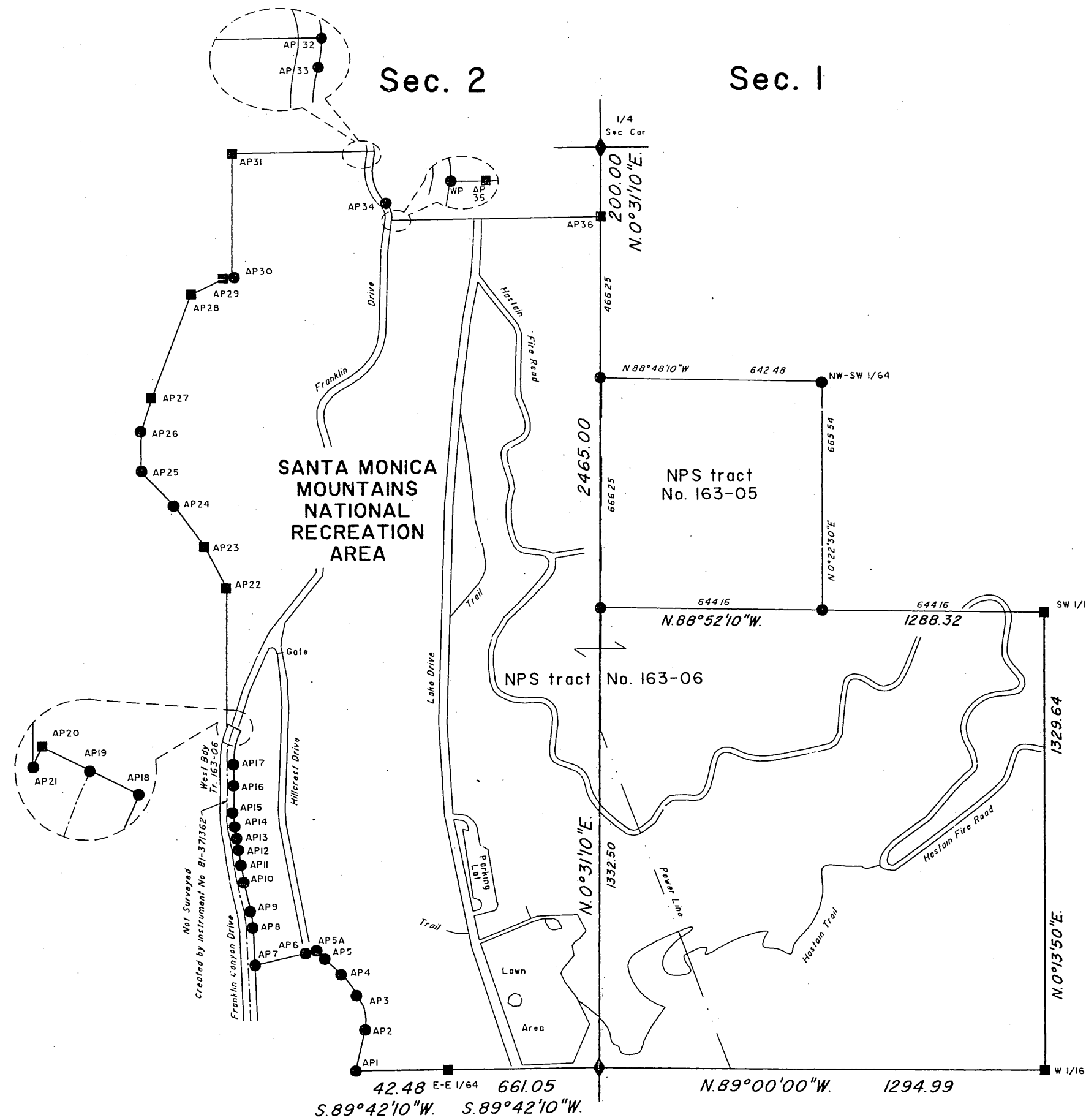
Reference should be made to Sheet No. 1 for survey information.



Traverse of a Portion of NPS Tract No. 163-06

Beginning at

|       |   |
|-------|---|
| AP1   | N 12°47'00"E . 119.00   |
| AP2   | Concave Westerly<br>Δ = 35°47'00"<br>R = 127.09<br>L = 79.37  |
| AP3   | Concave Westerly<br>Δ = 24°08'00"<br>R = 250.00<br>L = 105.30 |
| AP4   | N 47°09'10"W . 76.81  |
| AP5   | Concave Easterly<br>Δ = 09°44'14"<br>R = 130.28<br>L = 19.87  |
| AP5A  | S 77°08'50"W . 21.85  |
| AP6   | S 77°08'50"W . 161.37   |
| AP7   | N 2°15'50"W . 109.30  |
| AP8   | Concave Westerly<br>Δ = 10°41'30"<br>R = 259.66<br>L = 48.45  |
| AP9   | N 12°57'20"W . 94.43  |
| AP10  | Concave Easterly<br>Δ = 5°17'50"<br>R = 310.29<br>L = 17.85   |
| AP11  | N 7°12'50"W . 47.10   |
| AP12  | Concave Westerly<br>Δ = 5°17'50"<br>R = 310.29<br>L = 17.85   |
| AP13  | N 10°30'40"W . 39.72  |
| AP14  | Concave Easterly<br>Δ = 12°54'10"<br>R = 190.17<br>L = 41.72  |
| AP15  | N 2°03'30"E . 82.23   |
| AP16  | Concave Westerly<br>Δ = 5°42'50"<br>R = 645.07<br>L = 64.33   |
| AP17  | Concave Easterly<br>Δ = 30°00'30"<br>R = 190.00<br>L = 99.51  |
| AP18  | N 63°30'00"W . 20.00  |
| AP19  | N 63°30'00"W . 20.00  |
| AP20  | Concave Easterly<br>Δ = 2°00'10"<br>R = 230.00<br>L = 8.04    |
| AP21  | N 0°23'00"E . 401.10  |
| AP22  | N 27°23'50"W . 138.17   |
| AP23  | N 36°28'40"W . 145.71   |
| AP24  | N 43°38'00"W . 136.60   |
| AP25  | N 0°25'40"E . 115.50  |
| AP26  | N 18°09'00"E . 109.55   |
| AP27  | N 20°51'00"E . 313.07   |
| AP28  | N 64°46'20"E . 115.55   |
| AP29  | S 89°28'50"E . 14.22  |
| AP30  | N 0°31'10"E . 357.31  |
| AP31  | N 89°13'30"E . 412.51   |
| AP32  | Concave Westerly<br>Δ = 16°53'46"<br>R = 84.00<br>L = 24.77   |
| AP33  | Concave Easterly<br>Δ = 65°00'00"<br>R = 124.00<br>L = 136.35 |
| AP34  | Concave Westerly<br>Δ = 56°56'13"<br>R = 54.46<br>L = 56.02   |
| AP34A | N 89°13'30"E . 20.59  |
| AP35  | N 89°13'30"E . 579.25   |
| AP36  | N 89°13'30"E . 579.25   |



- LEGEND
- ◆ Original Evidence Recovered: Remonumented
  - Local Evidence Recovered: Remonumented
  - Position Determined and Monumented

UNITED STATES DEPARTMENT OF THE INTERIOR  
BUREAU OF LAND MANAGEMENT  
Sacramento, California

This plat is strictly conformable to the approved field notes, and the survey, having been correctly executed in accordance with the requirements of law and the regulations of this Bureau, is hereby accepted.

For the Director  
*James J. Pitz* September 29, 2003  
Chief Cadastral Surveyor—California

D.a.d.  
dhh