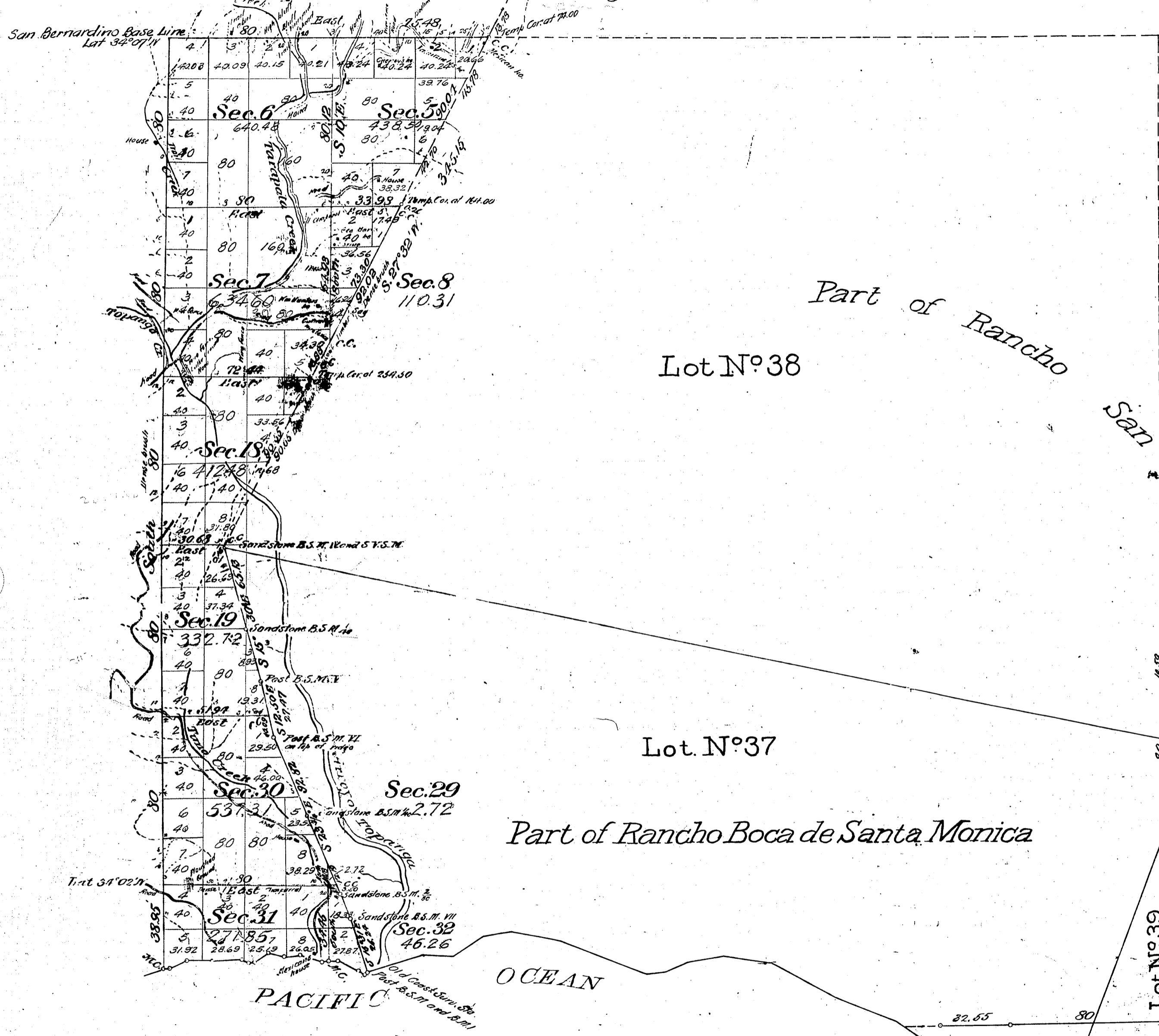


Township N<sup>o</sup> 1 South, Range N<sup>o</sup> 16 West, San Bernardino Meridian, California.



Sec	Course	Dist	Dec.	Course	Dist
31	N 75 3/4 E	3.28	32	S 89 1/2 E	3.58
	N 66 3/4 E	9.28		S 77 3/4 E	10.78
	S 89 1/4 E	11.70		S 68 3/4 E	5.58
	N 87 E	15.55		N 85 3/4 E	3.58
	S 71 1/2 E	3.16			20.28
	N 87 1/2 E	1.58			32.51
	N 62 E	8.37			Aggregate 102.79
	S 82 E	7.72			1 mi. 23 chs. 79 lbs.
	N 87 1/2 E	7.15			
	S 75 1/4 E	11.48			
	N 86 1/2 E	3.27			
		82.51			

Aggregate area of Public and surveyed 3,426.93 Acres  
 Estimated Private Grants 18,867.00  
 21,493.93

FOR FIELD NOTES OF SECS. 5, 6, 7, 8, & 18, T. 1S, R. 16W SEE C.S. 9006  
 For Rancho lines of Ro. Boca de Santa Monica See C.S. 9231

For lines of Ro Boca De Santa Monica See C.S. 9232  
 E. 35 lines Sec. 7 & 31 S. lines Sec. 7 & 31 S. lines Sec. 18 & 19, 30, C.S. 9237  
 Part of N. Twyp line C.S. 9298  
 West Range line C.S. 9304  
 Sec. & Rancho lines - C.S. 9312

Survey designations	By whom surveyed	Contract		Amount of Survey			When surveyed
		No.	Date	Acres	Chs.	Lbs.	
Parts of S. and E. 1/4 Sec. 27.	H. Washington		Oct 4, 1882				1883
Remainder of lots No. 27, 28 & 29	Wm. Tinto		(inst) Dec. 15, 1880				1881
N. and part of 1/4 Sec. 26.	J. R. Glover	382	Nov 20, 1884				1895
Parts of lots 27, 28 adjoining Patterson, returned.							
Section lines, new	W. S. Reilly	583	Nov 20, 1884	6	64	60	1895
Transfer lines				1	22	79	
Connecting lines				43	14		Dec. 6, 1895

The above map of Township No 1 South Range No 16 West California, is strictly conformable to the field notes of this office, which have been examined and approved by the U.S. Surveyor General's Office San Francisco, California  
 June 2, 1896

W S Green  
 U.S. Survey Gen. Cal.

TOWNSHIP 1 SOUTH, RANGE 16 WEST, OF THE SAN BERNARDINO MERIDIAN, CALIFORNIA.  
 DEPENDENT RESURVEY AND SUBDIVISION OF FRACTIONAL SECTION 19

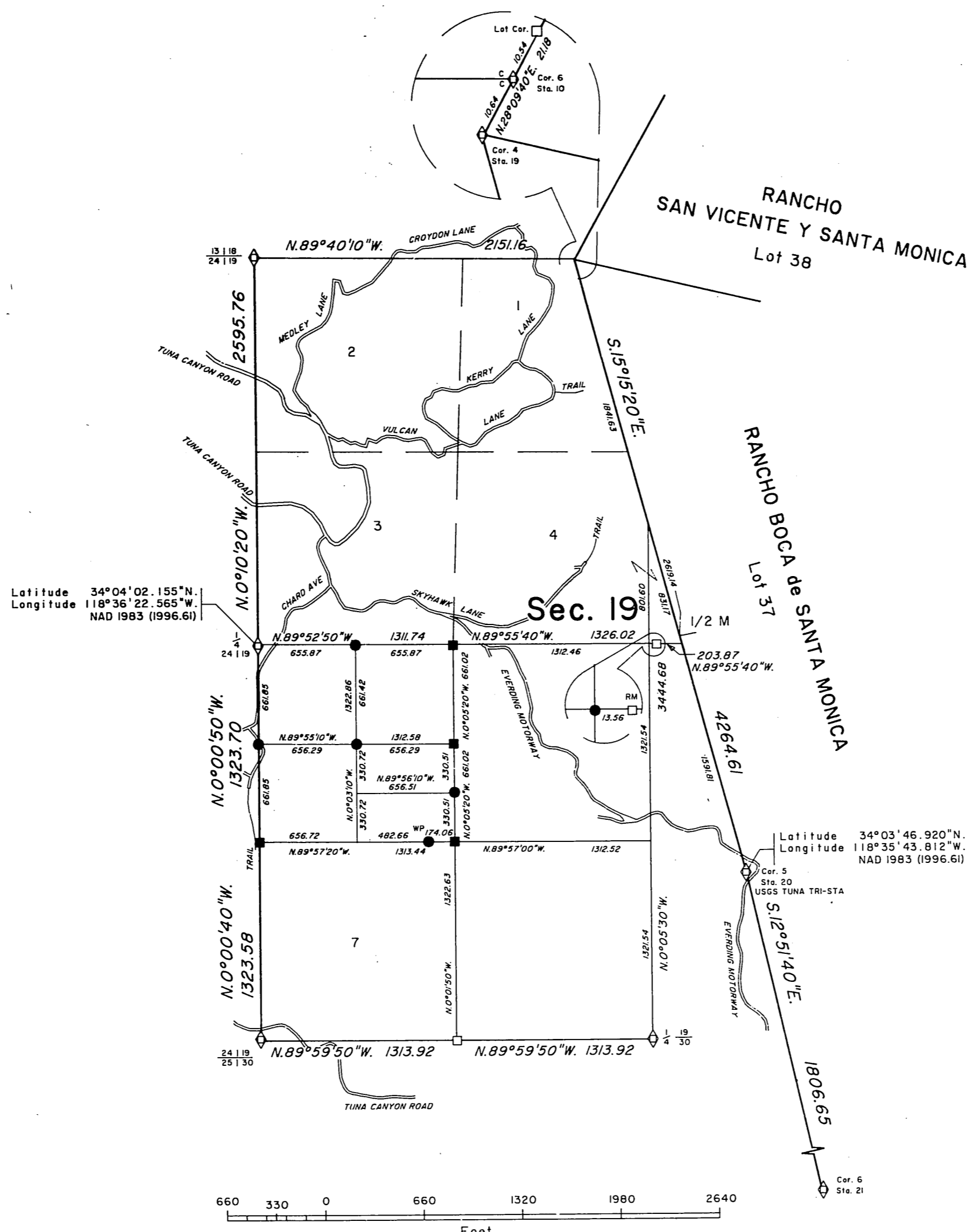
ORIGINAL

A history of surveys is contained in the field notes.

This plat represents the dependent resurvey of a portion of Rancho Boca de Santa Monica, a portion of the west boundary and a portion of the subdivisional lines, designed to restore the corners in their true original locations according to the best available evidence, and the subdivision of fractional section 19, Township 1 South, Range 16 West, San Bernardino Meridian, California.

Lottings and areas are as shown on the township plat approved June 20, 1896.

Survey was executed by David H. Haller, Cadastral Surveyor, Beginning July 18, 1996, and completed July 26, 1996, pursuant to Special Instructions dated July 15, 1996, for Group No. 1247, California.



- LEGEND**
- ◊ Original Evidence Recovered: Not Remonumented
  - Local Evidence Recovered: Not Remonumented
  - Local Evidence Recovered: Remonumented
  - Position Determined and Monumented
  - ◊ Original Position Perpetuated by Testimonial Evidence: Not Remonumented

UNITED STATES DEPARTMENT OF THE INTERIOR  
 BUREAU OF LAND MANAGEMENT  
 Sacramento, California

This plat is strictly conformable to the approved field notes, and the survey, having been correctly executed in accordance with the requirements of law and the regulations of this Bureau, is hereby accepted.

For the Director  
 February 4, 1998  
*David G. Bishop*  
 Chief Cadastral Surveyor-California

D.a.d.