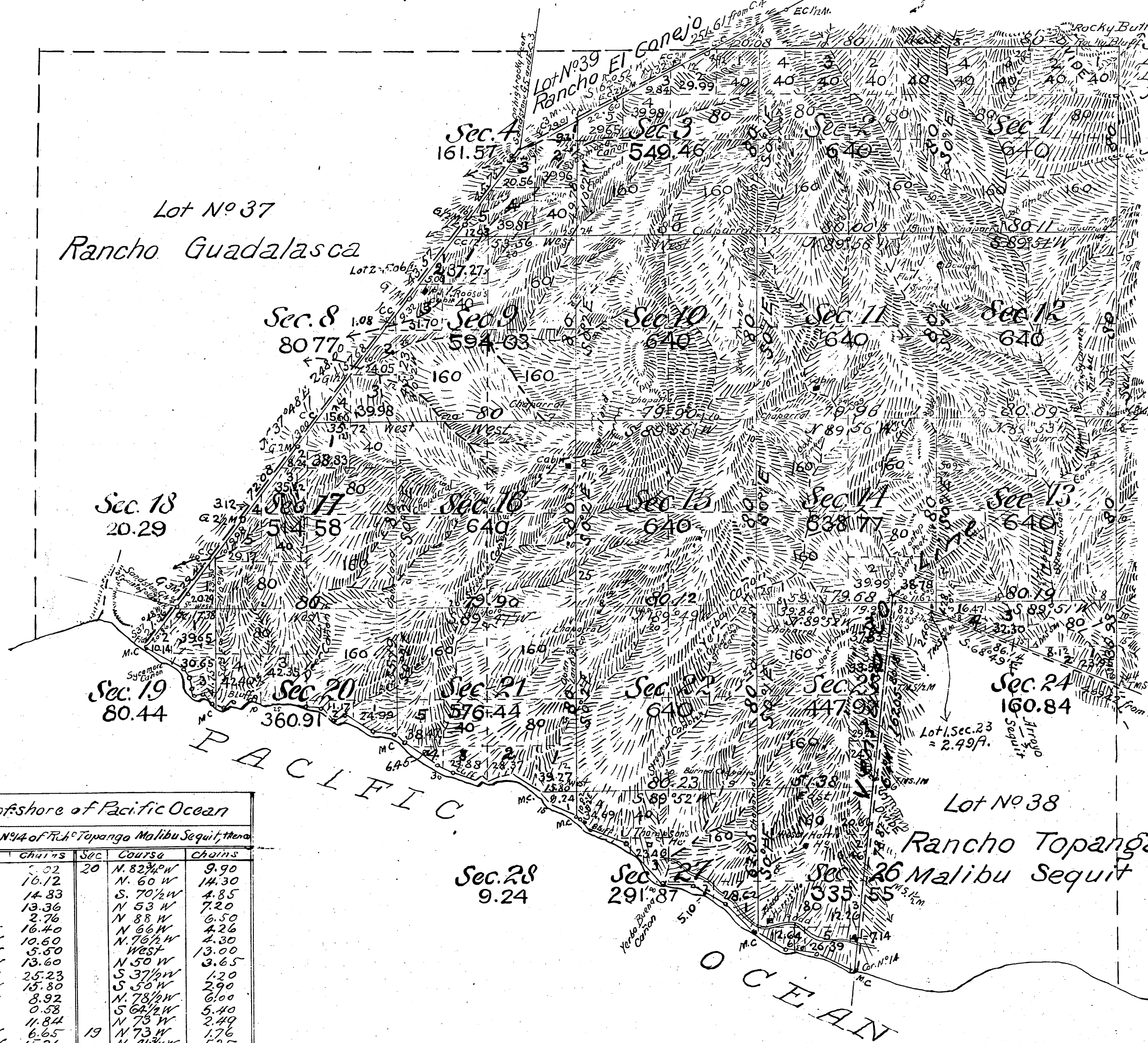


Township N<sup>o</sup> 1 South, Range N<sup>o</sup> 20 West, San Bernardino Meridian, California

T 1 S  
R 20 W



The above map of Township N<sup>o</sup> 1 South Range N<sup>o</sup> 20 West San Bernardino Meridian California is strictly conformable to the field notes of the surveys thereof on file in this Office which have been examined and approved  
 U.S. Surveyor General's Office  
 San Francisco California  
 March 3<sup>d</sup> 1897  
 W. S. Green  
 U.S. Surveyor Genl. Cal.  
 Rancho El Conejo bdy. - C.S. 9350  
 Part of interior rancho and township lines C.S. 9356  
 Par. Rancho Topanga Malibu F.D. 9449

*Meanders offshore of Pacific Ocean*  
 Beginning at Cor N<sup>o</sup> 14 of P.M. Topanga Malibu Sequit, then

SEC	Course	Chains	SEC	Course	Chains
26	West	5.22	20	N. 82 3/4 W	9.90
	N. 64 1/2 W	16.12		N. 60 W	14.30
	N. 80 1/2 W	14.83		S. 70 1/2 W	4.85
	N. 61 W	13.36		N. 53 W	7.20
27	N. 61 W	2.76		N. 88 W	6.50
	N. 47 1/2 W	16.40		N. 66 W	4.26
	N. 56 3/4 W	10.60		N. 76 1/4 W	4.30
	N. 67 3/4 W	5.50		West	13.00
	N. 89 1/2 W	13.60		N. 50 W	3.65
	N. 42 W	25.23		S. 37 1/2 W	1.20
	N. 68 1/2 W	15.80		S. 50 W	2.90
	N. 42 W	3.92		N. 78 1/2 W	6.00
28	N. 65 W	0.58		S. 64 1/2 W	5.40
	N. 65 W	11.84		N. 73 W	2.49
	N. 46 1/2 W	6.65	19	N. 73 W	1.76
21	N. 60 1/2 W	15.26		N. 49 1/4 W	5.25
	S. 74 W	4.05		S. 81 1/2 W	4.50
	S. 73 1/2 W	6.91		N. 13 1/2 W	3.90
	N. 44 W	3.06		N. 17 W	4.30
	S. 52 1/2 W	2.62		N. 36 W	4.50
	N. 71 W	11.50		N. 57 1/4 W	18.65
	N. 61 1/2 W	7.69			128.81
	N. 58 1/2 W	17.25			238.25
	N. 48 W	4.50			367.06
20	N. 65 1/2 W	1.20			4 m 13 4/10 06 1/4
		238.25			

Surveys Designated	By whom surveyed	Contract No.	Date	Amount of Surveys			When surveyed
				MIS	CHS	LES	
Boundaries of Lots Nos 37 & 39	E. Terrell	Inst	Aug 1, 1860				1861
38	G. H. Thompson		Aug 17, 1868				1870
Base Line (N bdy of TP), near	J. R. Glover	137	Nov 7, 1896	2	20	08	1896
East 3/4 of TP, near	"	"	"	3	35	93	"
Ranch bdy, resumed	"	"	"	7	75	72	"
Section lines, near	"	"	"	29	65	67	"
Connecting Lines	"	"	"	1	13	11	"
Meander lines, near	"	"	"	4	47	06	Dec 26 1896

Filed in U.S. Land office Los Angeles  
 April 10<sup>th</sup> 1900.  
 Suspended from disposition under  
 agricultural laws by letter N<sup>o</sup> of  
 August 11, 1900.

Aggregate Area of Public Land 10,582.73 Acres  
 Estimated Private Grants 5,518.00  
 Aggregate 16,100.73

I hereby certify the above to be a full, true and correct copy of the original plat of Twp N<sup>o</sup> 1 S. R. N<sup>o</sup> 20 W. S. B. M. Cal. approved March 3<sup>d</sup> 1897 on file in this Office  
 U.S. Surveyor General's Office  
 San Francisco California  
 March 8, 1900

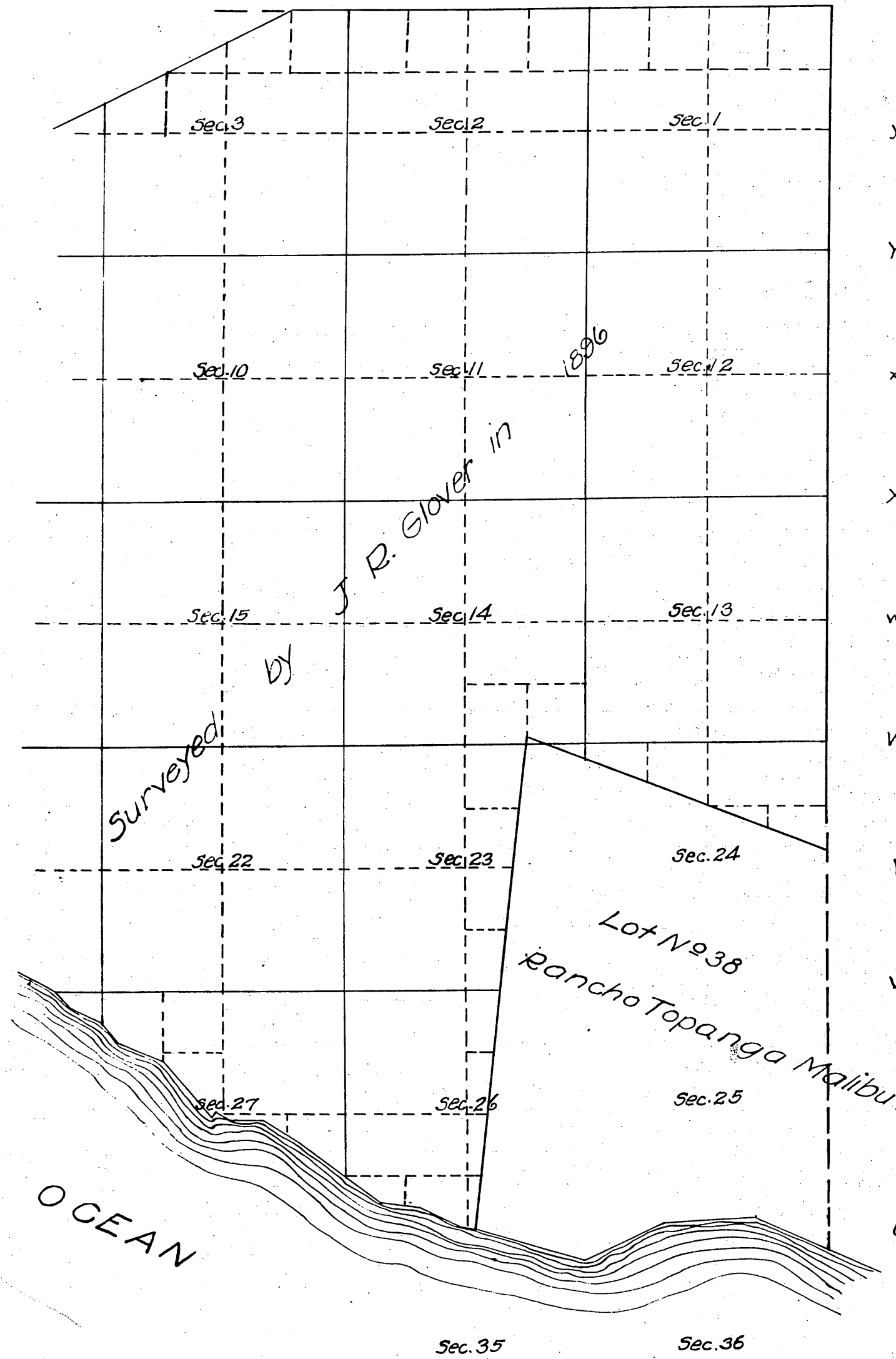
J. M. Glover  
 U.S. Surveyor Genl. Cal.

(4675a)

Township N<sup>o</sup> 1 South, Range N<sup>o</sup> 20 West San Bernardino Meridian California.

G f F e E d D c C b B a A

Received  
Oct. 9-1911  
U.S. Land Office  
Los Angeles Cal.



Filed in U.S. Land Office  
Los Angeles Cal.  
Dec. 5-1911

*Francis Buren*  
Register.

Areas in Acres.	
Public Land	10,582.73
By Rightfoot	106.35
Indian Reservation	
Indian Allotments	
Mineral Claims	
Water Surface	
Private Grants	5,518.00
Total Area	16,209.08

0 10 20 40 80

Scale 40 Chains to an inch  
Mean Magnetic Declination  
Latitude 34° 04' N near Cor. of Secs.  
Longitude 119° 0' W 17, 18, 19 and 20

Surveys Designated	By Whom Surveyed	Contract No.	Contract Date	Amount of Survey			When Surveyed	
				Mls.	chs.	fks.	Begun	Completed
Lines previously surveyed, exhibited on plot approved March 3 1897.								
Ranch boundaries retraced	Wm J. Lightfoot	(G.L.O.S.L. of)	April 18, 1911	1	52	44		
Subdivisions retraced	U.S. Surveyor			1	03	58	June 19, 1911	June 21, 1911
"	"				45	30		
Meanders	"			1	43	20		

The above map of Township N1 South Range N<sup>o</sup> 20 West of the San Bernardino Meridian, California, is strictly conformable to the field notes of the survey thereof on file in this office which have been examined and approved

U.S. Surveyor General's Office.  
San Francisco California.

September 14, 1911

*E. H. Archer*  
U.S. Surveyor General.  
for California