

Township N^o 2 North, Range N^o 7 West, San Bernardino Meridian.

T2N
R7W
①



Surveys Designated	By whom Surveyed	Date of Contract	Amount of Surveys	When Surveyed	Meridian Decl ⁿ
Township lines (Augmented rate)	J. R. Clover	January 14 th 1884	24 Mcs Or Chs 93 ^{ths}	1884	74° 26' East
Section lines (" ")	"	"	60 - 31 - 65	February 18 th 1884	

The above Map of Township N^o 2 North, Range N^o 7 West, San Bernardino Meridian is strictly conformable to the field notes of the surveys thereof on file in this office which have been examined and approved.
 Surveyor General's Office.
 San Francisco California.
 June 20th 1884

W. H. BROWN
 Sur. Gen. Cal.

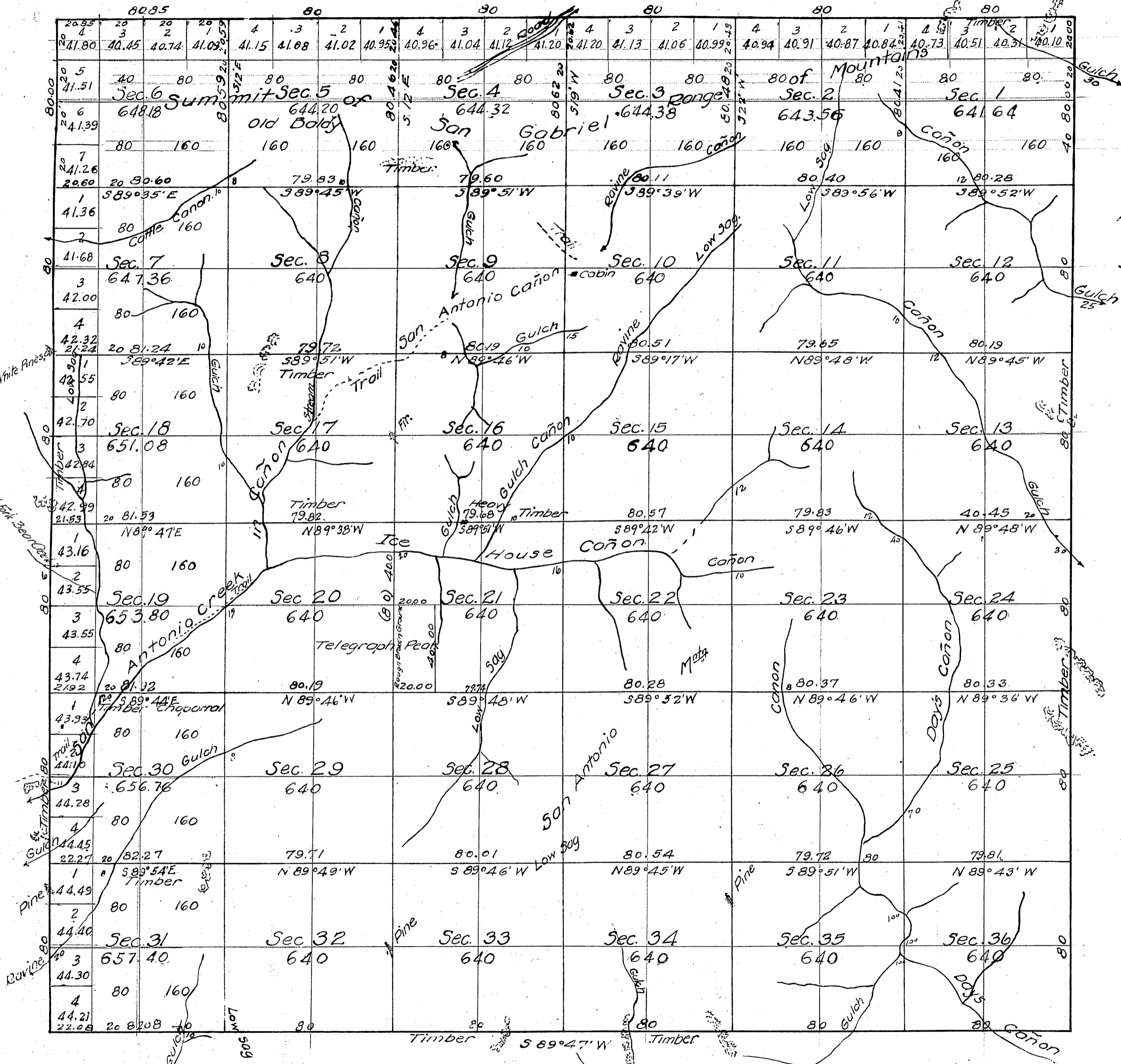
Field Notes W. Bdry. Secs. 30, 31 See M-27 P. 9767
 W. B. of Township see C. S. 9066

All of T²N. in San Gabriel Forest Reserve

Aggregate Area of Public Land 23,132.68 Acres.

Township No 2 North, Range No 7 West, San Bernardino Meridian.

N 89° 53' W



All of Tp. withdrawn from Entry by
Com. Letter P. Nov 14-91.

All of Tp. in San Gabriel Forest Reserv.
Proclamation of Pres. Dec. 20th 92.
SE 1/4 of SW 1/4 withdrawn for Deer Canyon on Ranger Sta. L. 7/15/07

Aggregate Area of Public Land 23,132,68 Acres.

Field Notes per. S. bdy See C.S. 9126
" of W. bdy, and certain sec. lines. C.S. 9128

Deposits made by own survey
Joseph P. Clark \$100 \$1224
Cost of Survey 1133.71

U.S. Land Office
Los Angeles, Cal.

Recd and filed, July 23 - 1884

Bluz P. John
Register.
(Johnson)

Surveys Designated.	By whom Surveyed.	Date of Contract.	Amount of Surveys.	When Surveyed	Mean Decl.
Township lines (Augmented rate)	J. R. Glover	January 14 th 1884	24 Mls. 02 Chs. 93 lks.	1884	14° 26' East.
Section lines (" ")	" " "	" " "	60 " 31, 65 "	February 18 th 1884	

The above Map of Township No 2 North Range No 7 West, San Bernardino Meridian is strictly conformable to the field notes of the surveys thereof on file in this office which have been examined and approved.
Surveyor General's Office.
San Francisco California.
June 20th 1884.

W. H. Brown
Surv. Gen. Cal.

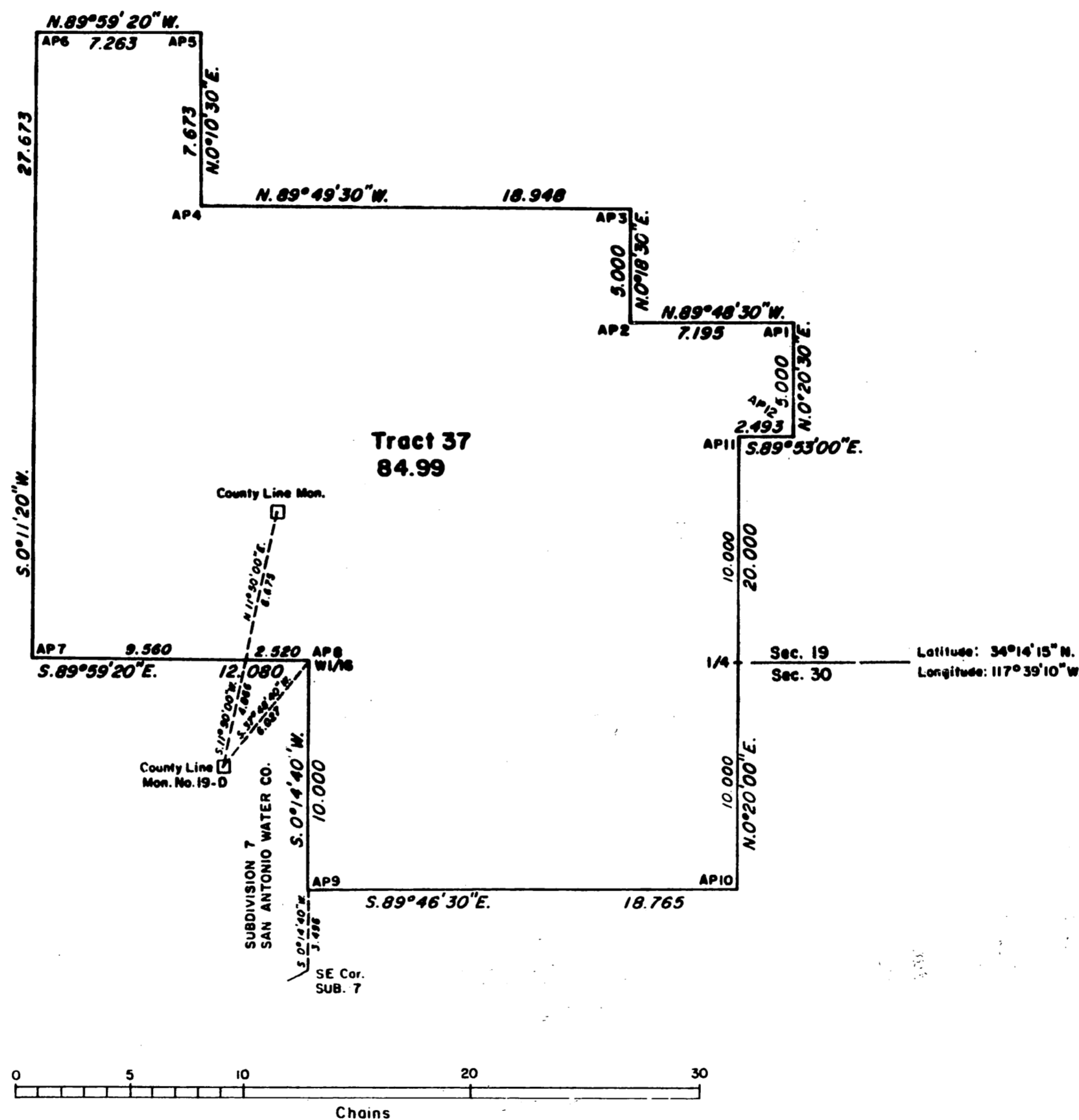
TOWNSHIP 2 NORTH, RANGE 7 WEST, OF THE SAN BERNARDINO MERIDIAN, CALIFORNIA.

SURVEY OF TRACT 37

A history of surveys is contained in the field notes.

This plat represents the metes-and-bounds survey of Tract 37, Township 2 North, Range 7 West, San Bernardino Meridian, California.

Survey was executed by Robert W. Zickwolf, Cadastral Surveyor, U.S. Forest Service, beginning September 2, 1966, and completed April 30, 1967, pursuant to Special Instructions dated June 17, 1966, and Supplemental Special Instructions No. 1 dated April 3, 1967, for Group No. 970, California.



UNITED STATES DEPARTMENT OF THE INTERIOR
BUREAU OF LAND MANAGEMENT
SACRAMENTO, CALIFORNIA

This plat is strictly conformable to the approved field notes, and the survey, having been correctly executed in accordance with the requirements of law and the regulations of this Bureau, is hereby accepted.

For the Director

Clifford A. Robinson May 4, 1968
Chief Cadastral Surveyor.