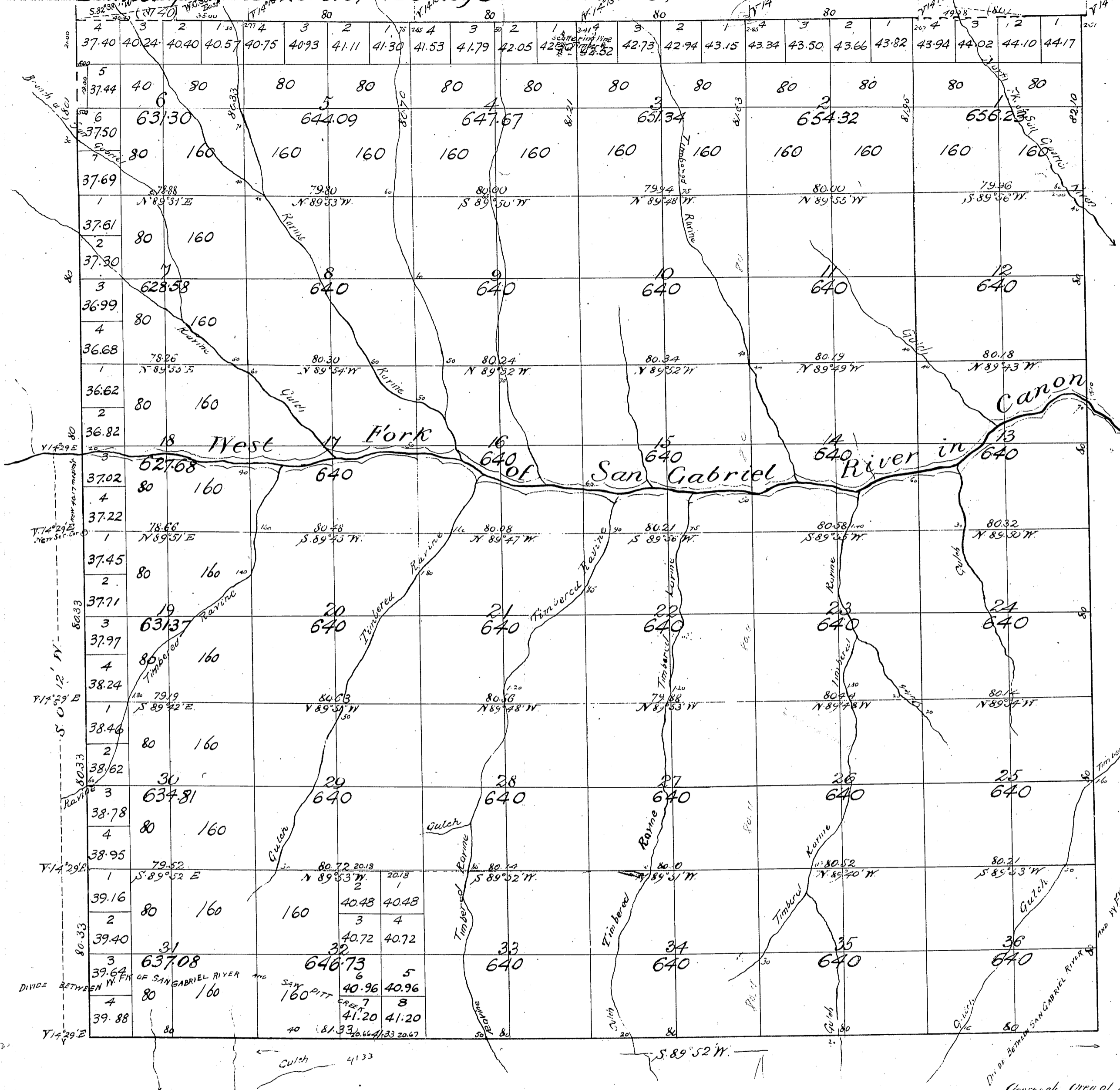


Township No 2 North, Range No 10 West, San Bernardino Meridian.



T 2 N
R 10 W
①

Gov't Field Notes in Secs 2, 6, 7, 10, 11, 13 to 21 C.S. 9016
For part of int. & Ext. Lines C.S. 9246
For part of W. Twyp Line see C.S. 9261

Surveys Designated	By whom Surveyed	Date of Contract	Amount of Surveys	When Surveyed
Township lines colored brown (part of)	W. H. Norway	July 31 st 1875	6 Miles 02 ch's 10 lts.	1875
East boundary of Township	G. W. Pearson	December 10 th 1883	4 " 41 " 33 "	1884
Part of 5 bdy. of Tp. not colored	"	"	0 " 40 " 00 "	"
" " " " colored blue resurveyed	"	"	3 " 00 " 99 "	"
" " " " not colored	"	"	0 " 40 " 17 "	"
" " " " colored blue resurveyed	"	"	80 " 06 " 09 "	"
Section lines	"	"	0 " 16 " 89 "	"
Connections lines	"	"	"	"
Part of N 3/4 of 1/4 Subsec. 1 gran. resurveyed	"	"	"	May 1 st 1884

W. H. Brown
U.S. Surv. Gen. Chk.

(All of this Township is in the San Gabriel Forest Reserve)