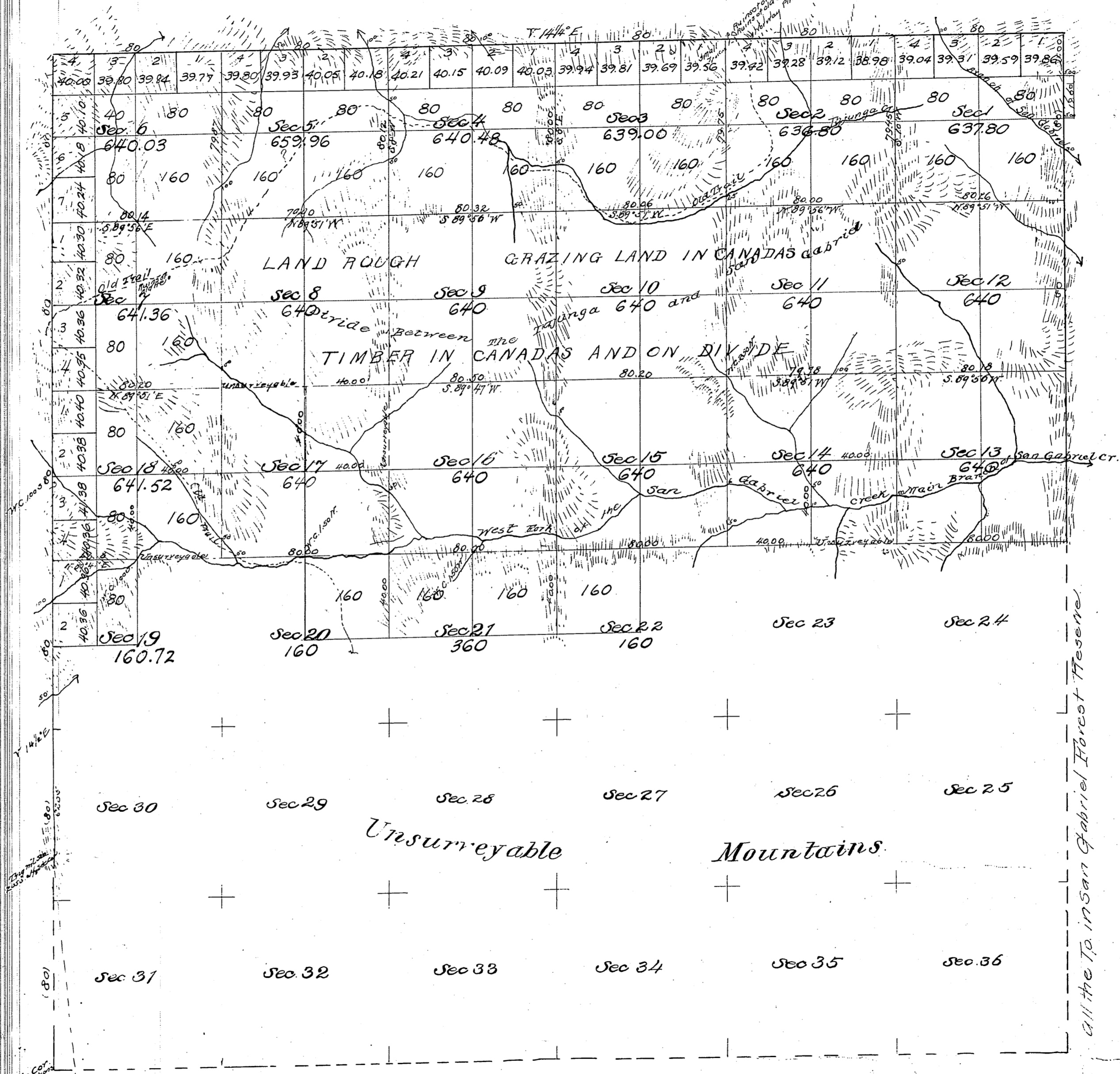


Township N^o 2 North. Range N^o 11 West. San Bernardino Meridian.

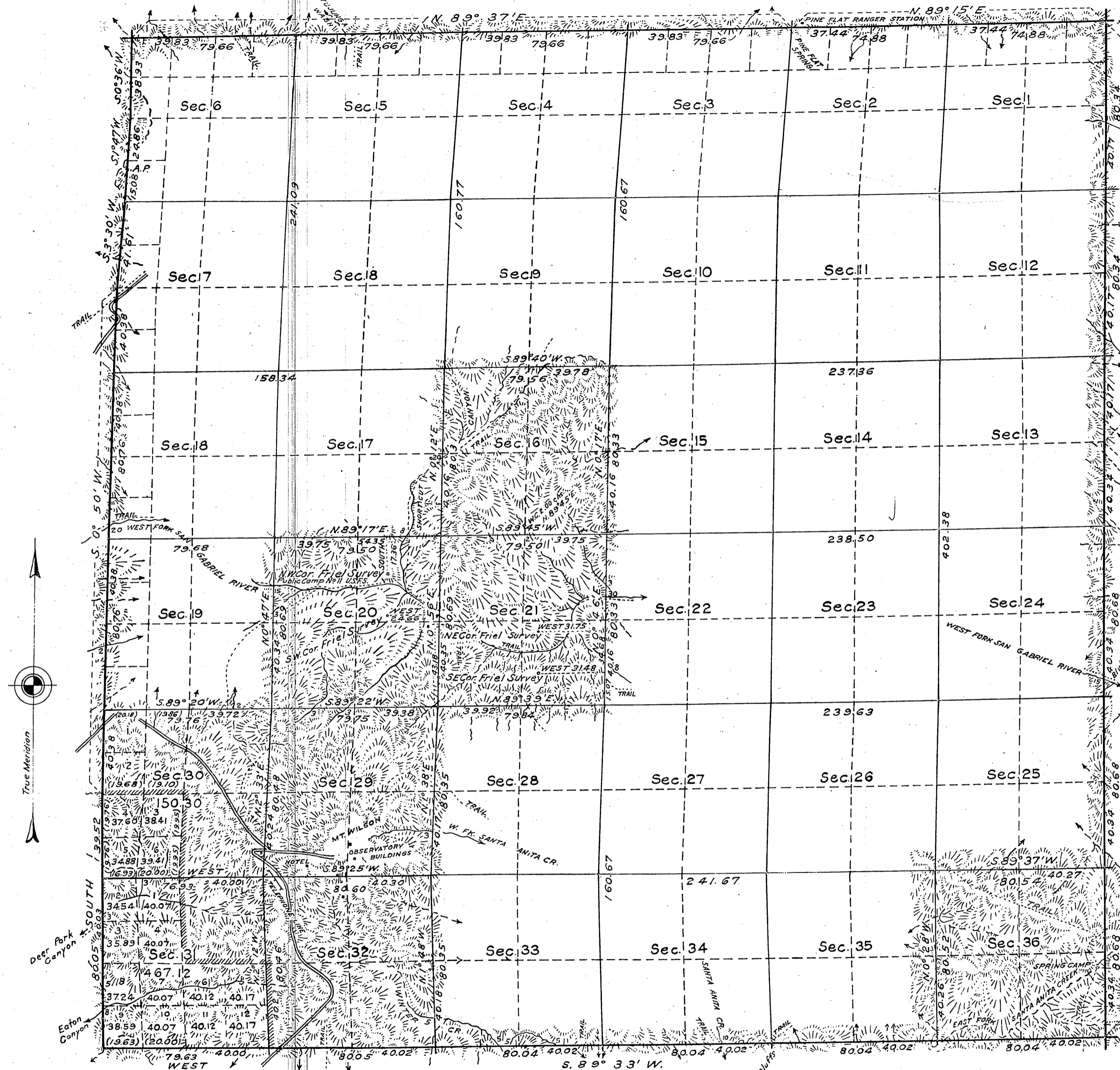


For report on lines in Sec. 16, 20, 21, see C.S. 9424.
Twp. Bdy. & par. interior section lines - C.S. 9370
Govt. Field Notes in Secs 13 to 18 - C.S. 9017
Part of W. Bdy. of Twp. C.S. 9191
Interior & Twyp. Lines C.S. 9262
Part of Interior lines C.S. 9266
Part of W. bdy. C.S. 9283

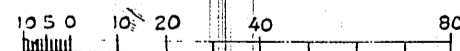
Public Lands Surveyed
Estimated Area of Unsurreyable Mountains 10, 722.88
Aggregate 230 40.55
18, 317.67 Acres

Surveys Designated	By whom Surveyed	Date of Contract	Amount of Surveys	When Surveyed
Township Lines	W.H. Conroy	July 31 st 1875	15 mi. 00. 00ths.	1875.
Section Lines	"	"	35. 00. 91.	October 2 nd 1875

RESURVEY,
TOWNSHIP N^o 2 NORTH. RANGE N^o 11 WEST, SAN BERNARDINO MERIDIAN, CALIFORNIA.



Lat. 34° 14' N } in SW 1/4 Sec. 29.
Long. 118° 04' W }



Mean Magnetic Declination, Scale: 40 Chains to an Inch. Area Surveyed, 617.42 Acres.

LINES DESIGNATED	BY WHOM SURVEYED	GROUP NO.	DATE	MILEAGE		WHEN SURVEYED	
				MLS.	CHS.	BEGUN	COMPLETED
Exterior	Dupree R. Averill U.S. Surveyor	165	Nov. 13, 1926	23	73.80	Nov. 10, 1926	Sept. 24, 1927
Subdivisional	Roger F. Wilson U.S. Transitman.			19	0.49		
Meander							
Miscellaneous				1	25.25		

Orig. O.B.T. Exam. H.S.P.

Office of U.S. Supervisor of Surveys
resurvey Denver, Colorado, Nov. 28, 1927.
The above plat of Township No. 2 North Range No. 11 West
of the San Bernardino Meridian, California,
is strictly conformable to the field notes of the survey
thereof which have been examined and approved.

Frank J. Simon
U.S. Supervisor of Surveys.

The resurvey represented upon this plat of T. 2 N., R. 11 W., S. B. M., delineates a retracement and reestablishment of the lines of the original survey as shown upon the plats approved April 3, 1876 and September 15, 1884, in their true original position according to the best available evidence of the position of the original corners; all differences between the measurements shown on the original plats and those derived in the retracement have been distributed proportionally between accepted corners in accordance with surveying rules; reference will be made to the original plats for the showing of the areas and more detailed descriptions of the various smaller subdivisions, of Secs. 16, 20, 21, 29, 32, 36, N 1/2 and SE 1/4 Sec. 30 and NE 1/4 Sec. 31. The SW 1/4 Sec. 30, W 1/2 and SE 1/4 Sec. 31 were not previously surveyed. Disposals therein will be made on the basis of this plat

Twp. bdy. and por. of interior section lines - C.S. 9370
For report on Lines in Sec. 16, 20, 21, see C.S. 9424

Filed in U. S. Land Office,
Los Angeles, Cal.

John C. Howell
Register.

12-19-14 '8 Reg. Oct. 17, 1928.

DEPARTMENT OF THE INTERIOR
GENERAL LAND OFFICE

Washington, D.C., Dec. 14, 1927.

The survey represented by this plat
having been correctly executed in accordance
with the requirements of law and the regulations
of this office, is hereby accepted.

John C. Howell
Assistant Commissioner.

Traced by Gus N. 2-27-29
Checked by Booth. 2-27-29

Handwritten initials