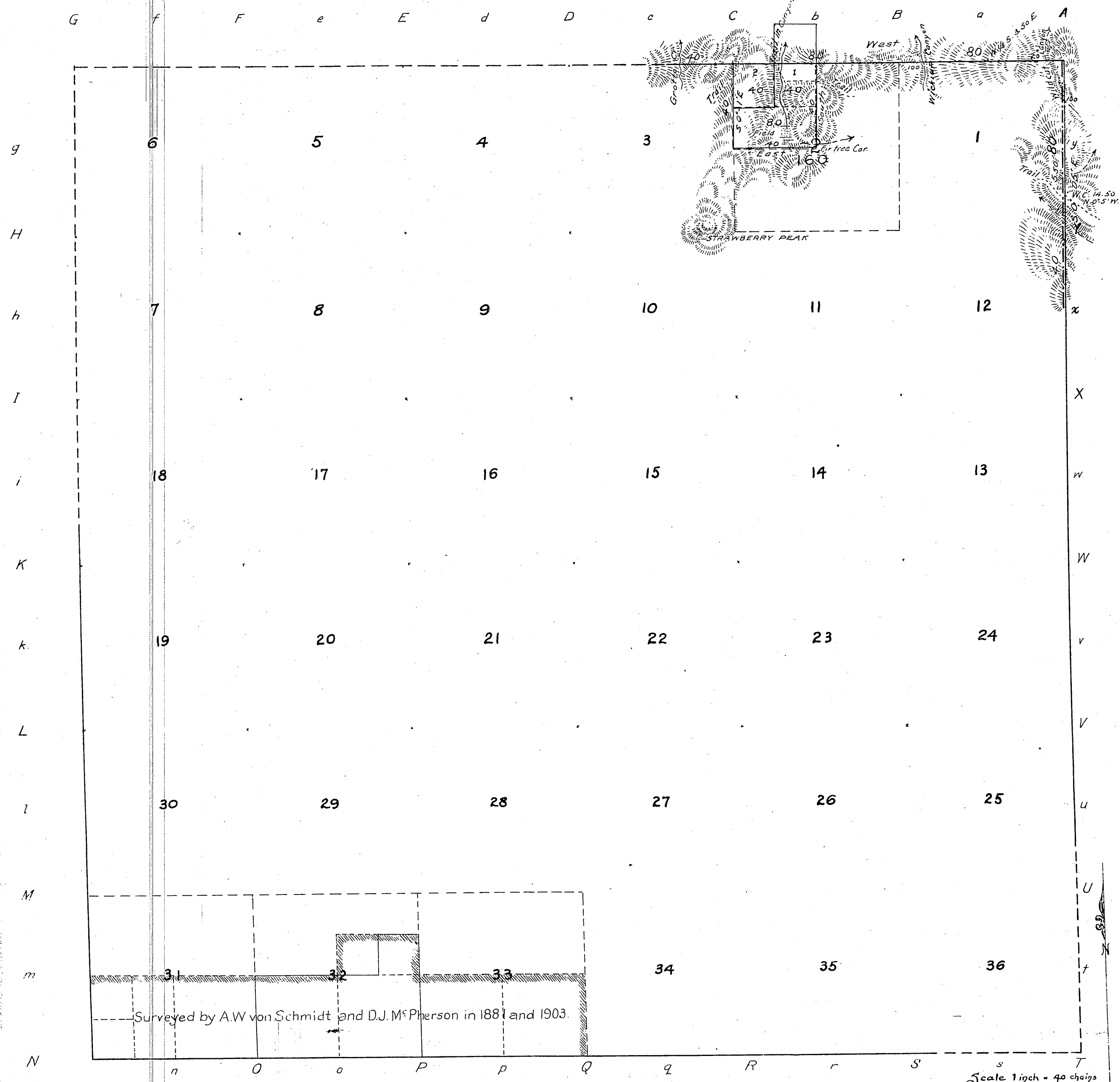




(4-675a)

Township N<sup>o</sup> 2 North, Range N<sup>o</sup> 12 West, San Bernardino Meridian, California



Public Land previously Surveyed	1041.00 Ac.
"    " surveyed by Sickler	160.00 "
Aggregate Area of Public Lands surveyed	1201.00 "
Estimated " Unserved Land	21840.00 "
Aggregate	23041.00 "

All of this Township is within the San Gabriel Forest Reserve: Proclamation of Dec. 20, 1892

Areas previously returned as surveyed, are bounded by a line indicated thus

C.S. 9142 - Sec. 33

Filed in U. S. Land Office  
Los Angeles, Cal., April 16, 1906  
*Frank C. Puseos*  
Register

Lat 34° 18' North } near center of Sec. 35  
Long 118° 6' West } T. 3 N R. 12 W S. B. M.

Scale 1 inch = 40 chains

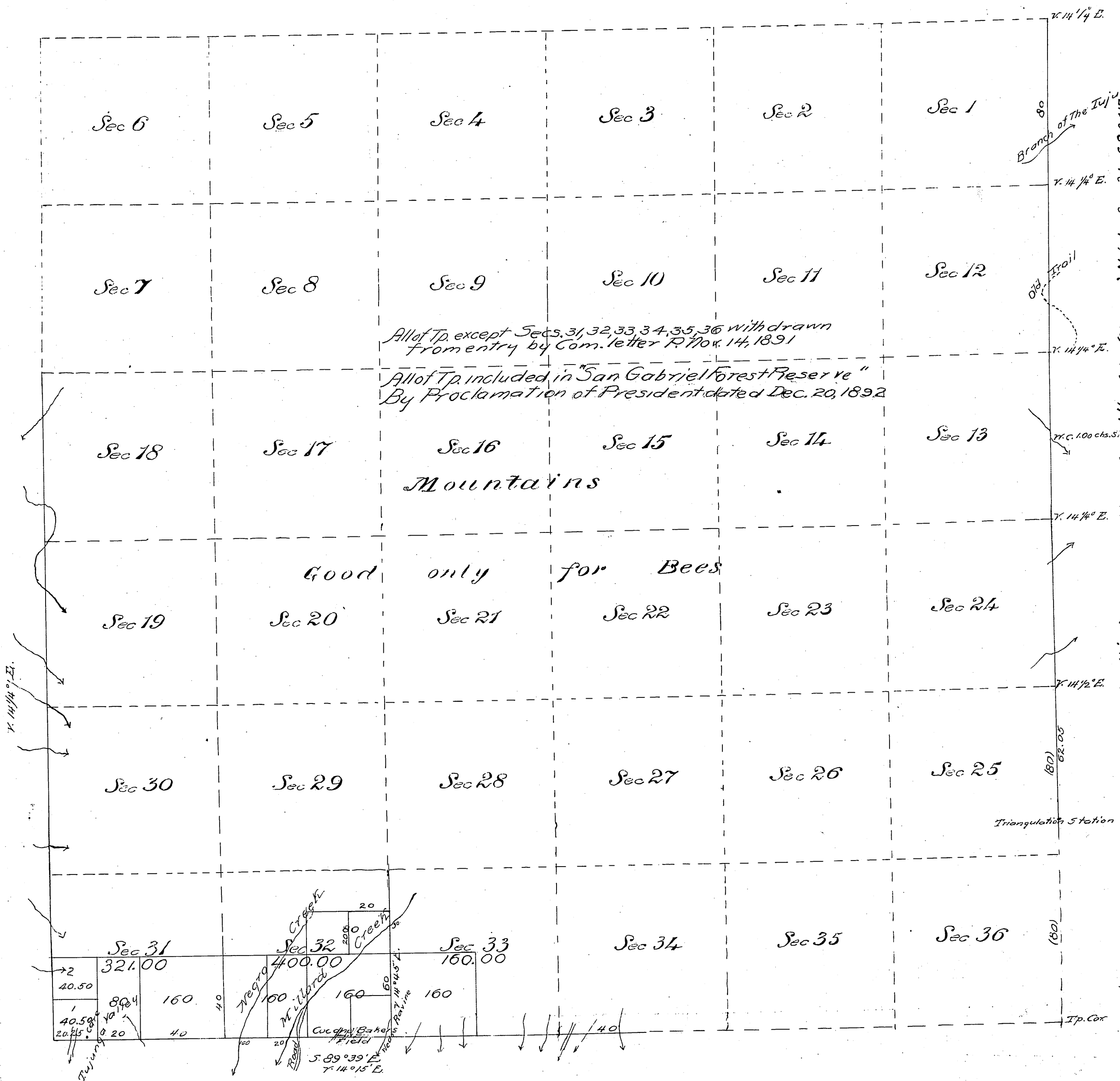
Surveys Designated	By Whom Surveyed	Date of Contract	Amount of Surveys Ch <sup>2</sup> Lk <sup>2</sup>	When Surveyed	Magn. Decl.
Lines previously surveyed, exhibited on Map approved January 29, 1904.					
Part of E bdy of Tp re-surveyed	W <sup>o</sup> A. Sickler	222 August 14, 1903	1 40 00	1903	15° East
North bdy of Tp new	"	"	See plat of T. 3 N. R. 12 W.	1903 and 1905	"
Section and leg. sub- lines, new	"	"	1 40 00	Oct. 4, 1905	"

The above Map of Township N<sup>o</sup> 2 North, of Range N<sup>o</sup> 12 West, San Bernardino Meridian California, is strictly conformable to the field notes of the survey therefor on file in this Office, which have been examined and approved.

U. S. Surveyor General's Office,  
San Francisco, California,  
December 14, 1905

U. S. Sur. Genl  
for California.

Township N.° 2 North, Range N.° 12 West, San Bernardino Meridian.

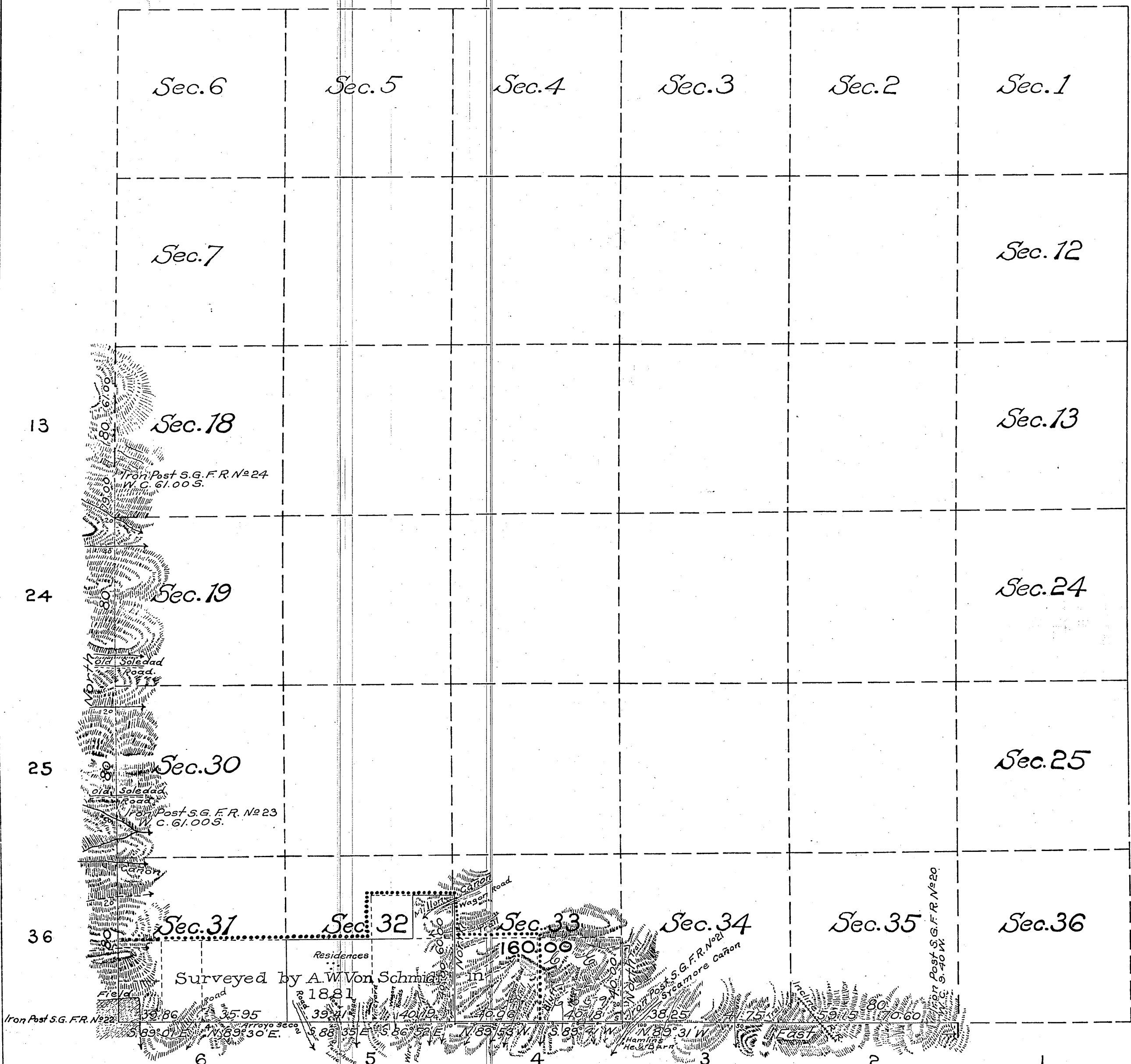


Gov't. Field Notes  
 C.S. 9071 - E. N. & W. Bdy's of surveyed land in Sec. 31 and the W. 1/2 of the (Norway) N. bdy. Sec. 31 - C.S. 9417  
 C.S. 9090 - W. B. of Twp. (by Norway 1875, and Cutting 1896) Alpine Tavern Survey - C.S. 9287  
 (W. B. of Secs. 7 & 18 (by Ross 1908))  
 C.S. 9142 - Sec. 33  
 C.S. 9275 - Sec. 26 & 34 C.S. 9279 - Sec. 32  
 Sec. 2 - C.S. 9290 - Sec. 33 - C.S. 9291  
 W. Boundary Sections 6 & 7 - C.S. 9364

Surreys Designated	By whom Surveyed	Date of Contract	Amount of Surreys	When Surveyed
East and West b'dies. of Tp.	W. H. Norway	July 31 <sup>st</sup> 1875		1875
South boundary "	J. Goldsmithy	February 25 <sup>th</sup> 1875		1875
Legal Sub division lines	L. W. Van Schmidt	(August 7 <sup>th</sup> 1888 Ord) (Spec. Instr. Feb. 25 <sup>th</sup> 1881)	2 mls. 40 chs. 00 lns	March 25 <sup>th</sup> 1881

TOWNSHIP No 2 N. RANGE No 12 W. SAN BERNARDINO MERIDIAN CALIFORNIA

Gov't Field Notes  
 C.S. 9065 S. Boundaries Secs. 31, 32, 33, 34 & 35, W. B. 30 & 31  
 C.S. 9142 S., E., W. " Sec. 33  
 Por. of South and West bdy. of Twp. (Angelus National Forest boundary line), C.S. 9382  
 Resurvey of the (Cutting) W. bdy. of Sec. 31 and the (Norway) W. 1/2 of the N. bdy. of Sec. 31 - C.S. 9417.



Area of Public Land previously surveyed	881.00 Acres
" " " " surveyed by Macpherson	160.00 "
Total Area of Public Land surveyed	1,041.00 Acres
Estimated Area of Unsurveyed Land	22,000.00
Aggregate	23,041.00

NOTE: All of this Township is within the San Gabriel Forest Reserve

Areas previously returned as surveyed, are bounded by a line indicated thus.....

Filed in U. S. Land office, Los Angeles Cal., June 13, 1904;  
*A. J. Proussaud,*  
 Registrar

Latitude 34° 12' North } near S. E. Cor. Sec. 33, T. 2 N. R. 12 W.  
 Longitude 118° 08' West }

Surveys Designated	By whom Surveyed	Contract No.	Date	Amount of Surveys Mls. Chs. Lks.	When Surveyed
Lines previously surveyed, exhibited on Map approved April 21, 1881.					
Part of W. & S. B'dies of Tp. (B'dies of S. G. F. R.)	L. H. Cutting	126	Feb. 24, 1896		1896
" " South B'dy of Tp. Re-traced.	David J. Macpherson	Inst.	December 17, 1902	1 00 24	1903
Section Lines, Re-surveyed	"	"	"	60 00	"
" " New	"	"	"	40 00	June 9, 1903

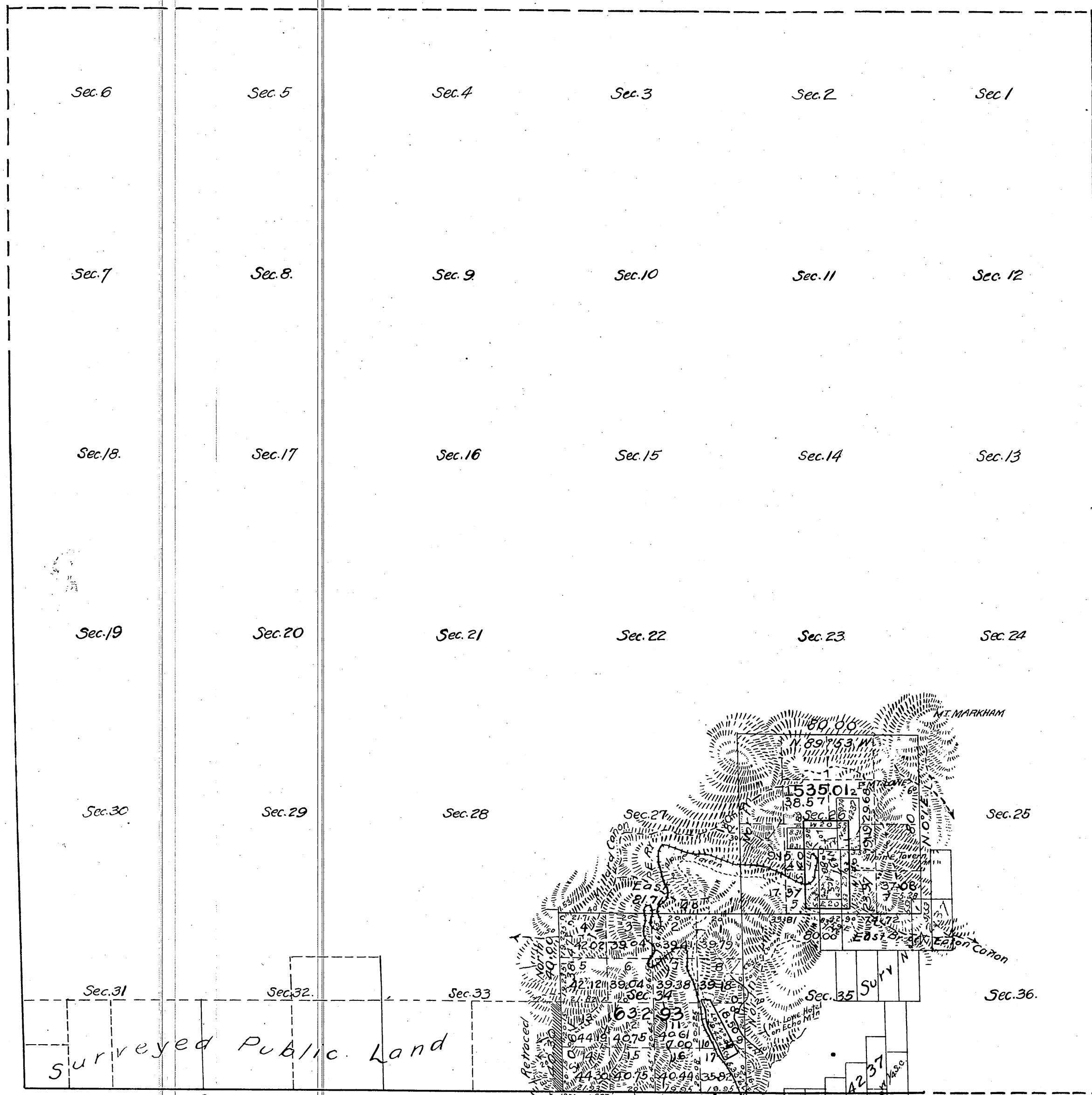
The above Map of Township No 2 North, Range No 12 West San Bernardino Meridian, California, is strictly conformable to the field notes of the surveys thereof, on file in this Office, which have been examined and approved.  
 U. S. Surveyor-General's Office.  
 San Francisco, California.  
 January 29, 1904.

*W. S. Graham*  
 U. S. Surveyor-General for California.



Township No 2 North, Range No 12 West, San Bernardino Meridian, California.

G f F e E d D c C b B b A



Lot No 37 - 80 Acre Tract at Alpine Tavern, Contains 80 Acres  
" " 38 - 20 " " " Echo Mountain " 19.42 "  
Surv. No 4237 - Monitor Con. Loda Claims

NOTE: Lots Nos 37 and 38, were granted to the Pasadena and Mount Wilson Railway Co. (Pacific Electric Railway Co successor) by Act of Congress, approved February 28, 1899.

Public Land previously surveyed  
" " surveyed by Friel 1167.94 Acres  
Area of Lots 37 and 38 99.42 "  
" " Surv. No 4237 in Sec. 26 outside of lot 37 24.99 "  
Estimated Area of unsurveyed Land

All of this Township is within the San Gabriel Forest Reserve - Proclamation of Dec 20, 1892

The line of demarcation between the areas previously counted in total acreage surveyed and the new surveys is indicated thus

For Sec. 33 - See C. S. 9142

Lot 34 12' N } in center of Sec. 3, T. 1 N., R. 12 W  
Long. 118° 08' W  
Magn. decln. 14° 31' E

Surveys Designated	By Whom Surveyed	Date of Contract	Amount of Surveys		When Surveyed
			M.	Ch.	Ac.
Lines previously surveyed, exhibited on maps of earlier dates.					
S. Bdy of Tp retraced	Legrand Friel	Spec. Instr. July 24, 1905	1	01	83
Line bet. Secs 2 & 3, T. 1 N., R. 12 W.	"	"		37	73
Section lines retraced	"	"		40	30
" " new	"	"	6	41	71
Bodies of lots 37 & 38	"	"	2	30	56
Connecting lines	"	"	7	16	33
					September 3, 1906

The above Map of Township No 2 North of Range No 12 West, San Bernardino Meridian, California, is strictly conformable to the field notes of the survey thereon on file in this Office, which have been examined and approved

U. S. Surveyor General's Office } *W. S. Graham*  
San Francisco, California. } U. S. Sur. Genl.  
July 9, 1907 } for California

Filed in U. S. Land Office, Los Angeles, Cal. 9 AM  
May 20 1908  
*James E. Paine*  
Register

Gov't Field Notes  
C.S. 9068 - All B'dys. of Sec. 26; E. & N. B'dys of Sec. 34; and N 1/2 of W. B. Sec. 34  
C.S. 9069 - All " " Lots 37 and 38  
C.S. 9070 - S. " " Sec 34 and 5 1/2 of W. B'dy. Sec. 34 (Retracement.)

