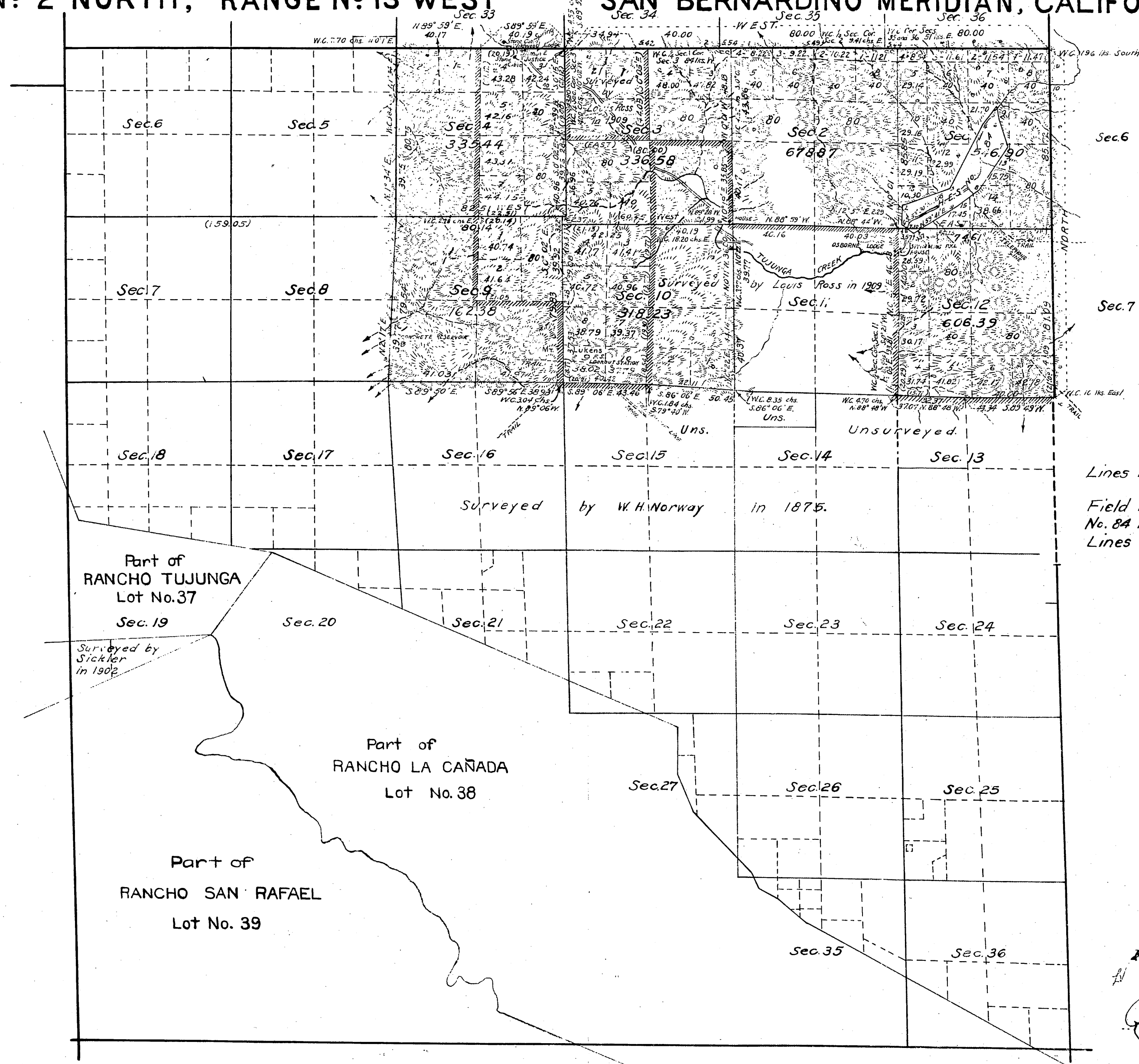




TOWNSHIP N° 2 NORTH, RANGE N° 13 WEST SAN BERNARDINO MERIDIAN, CALIFORNIA.

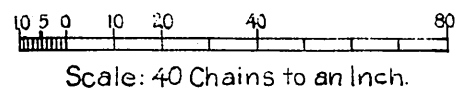
RECEIVED  
U. S. LAND OFFICE  
LOS ANGELES CALIF  
Date DEC 18 1926  
Hour 11:00 AM



Lines in Sections 1 to 12  
C.S. 9364  
Field Notes on Homestead Entry  
No. 84 in Sec. 1 and 12 - C.S. 9371.  
Lines of Section 3 - C.S. 9383

Filed in U. S. Land Office,  
Los Angeles Cal.  
FEB 23 1927  
Register.

Lat. 34° 16' N. Near the 1/4 Sec. cor. of Secs. 4 and 33  
Long. 118° 14' 30" W.



Mean Magnetic Declination, Area Surveyed, 2984.79 Acres.

LINES DESIGNATED	BY WHOM SURVEYED	No	GROUP DATE	MILEAGE		WHEN SURVEYED	
				MLS.	CHS.	BEGUN	COMPLETED
Exterior	William E. Hiester	138	June 10, 1924	6	2.11	June 17, 1925	Aug. 22, 1925
Subdivisional	U.S. Surveyor.	"	"	15	20.18	" 12, "	" 25, "
Meander	"	"	"				
Miscellaneous	"	"	"		18.76	Aug. 22, "	" 22, "

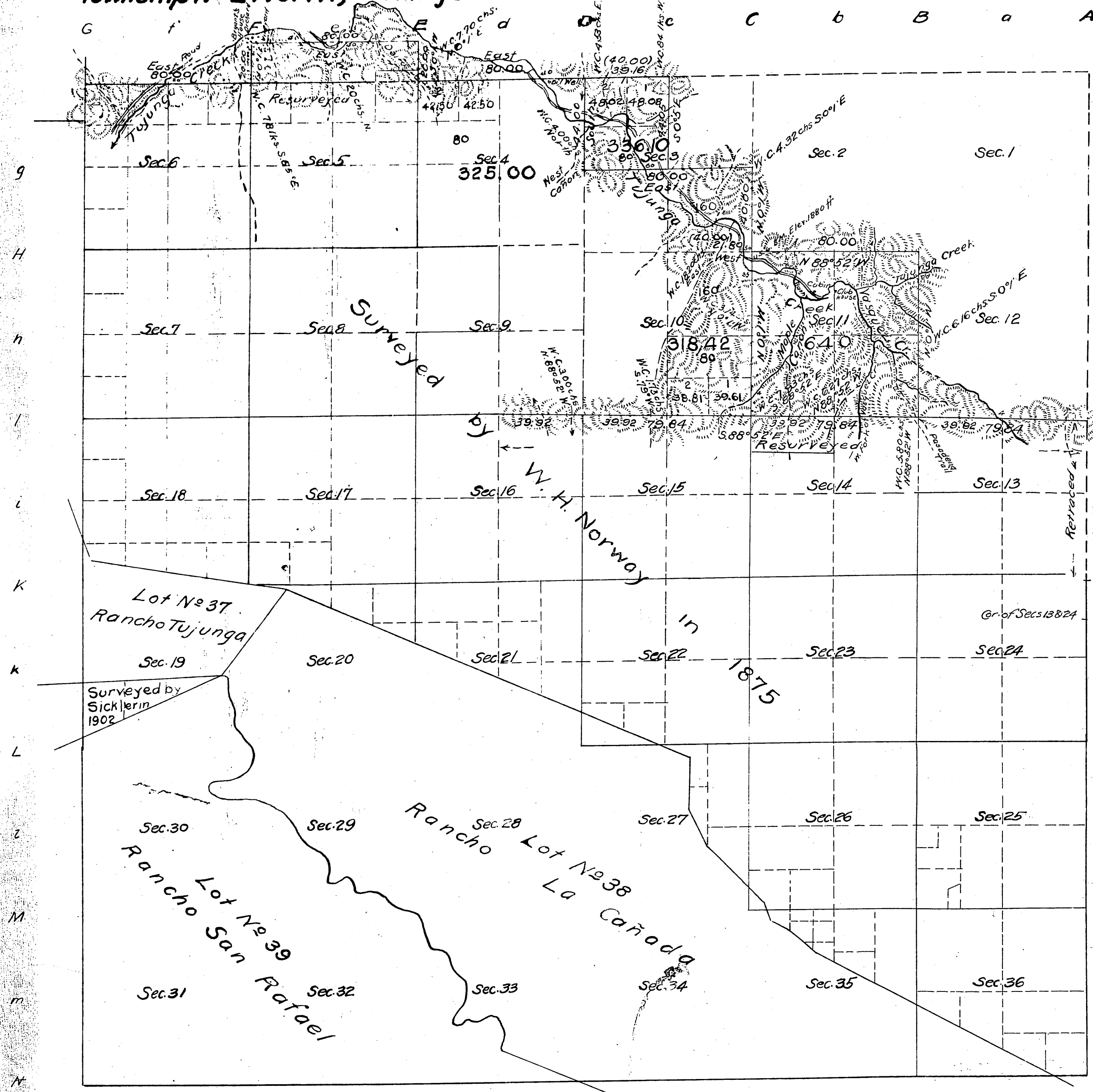
Office of U.S. Supervisor of Surveys  
Denver, Colorado, June 9, 1926  
The above plat of Township No. 2 North Range No. 13 West  
of the San Bernardino Meridian, California,  
is strictly conformable to the field notes of the survey  
thereof which have been examined and approved.

*Wm. H. Johnson*  
U.S. Supervisor of Surveys.

DEPARTMENT OF THE INTERIOR  
GENERAL LAND OFFICE  
Washington, D.C., October 26<sup>th</sup> 1926.  
The survey represented by this plat  
having been correctly executed in accordance  
with the requirements of law and the regulations  
of this office, is hereby accepted.

*J. C. ...*  
Acting Assistant Commissioner.

Township No 2 North, Range No 13 West, San Bernardino Meridian, California.



Field Notes

C.S. 9048 { N. side Secs. 10, 11, 13, 14, 15,  
E. " " 10, 11

C.S. 9073 { N. side Secs. 10, 11, 13, 14, 15, 16, 17  
W. " " 6, 7, 11, 12  
All " " 22

Bdy lines of Sec. 7 & 5/8 line of Sec. 8  
C.S. 9089

Lines in Section 3 - C.S. 9383

Area

Public Land previously surveyed 11,062.78 Acres.  
" surveyed by Ross 1,619.52 "  
Estimated area Private Grants 7,087.54 "  
" unsurveyed land 3,220.48 "  
Aggregate 22,990.32 "

All public land North of Lots 37 and 38 is within the Angeles National Forest

Filed in U. S. Land Office,  
Los Angeles, Cal.

MAY - 2, 1912

*Ernest B. Green*  
Register.

Areas in Acres.	
Public Land	
Indian Reservation	
Indian Allotments	
Mineral Claims	
Water Surface	
Total Area	

Scale 40 Chains to an inch

Mean Magnetic Declination  
Lat. 34° 17' N } at Cor. of Secs 2, 3, 10 & 11  
Long. 118° 15' W }

Surveys Designated.	By Whom Surveyed	Contract		Amount of Surveys			When Surveyed	
		No	Date	Mls.	Chs.	Trs.	Began	Completed
Lines previously surveyed, exhibited on plats approved Apr. 3, 1876; May 13, 1900; Oct. 1, 1900; July 14, 1902; May 21, 1903 & May 26, 1908.								
Body of Tp. resurveyed	Louis Ross	276	Dec. 5, 1908	2	00	00	Sept. 16, 1909	Sept. 21, 1909
				1	39	16	" 21	" 24
Section Lines resurveyed				3	39	44	Oct. 10	Nov. 1
				4	25	80	Nov. 4	" 15
Legal subdivision Lines				1	44	05	" "	" "

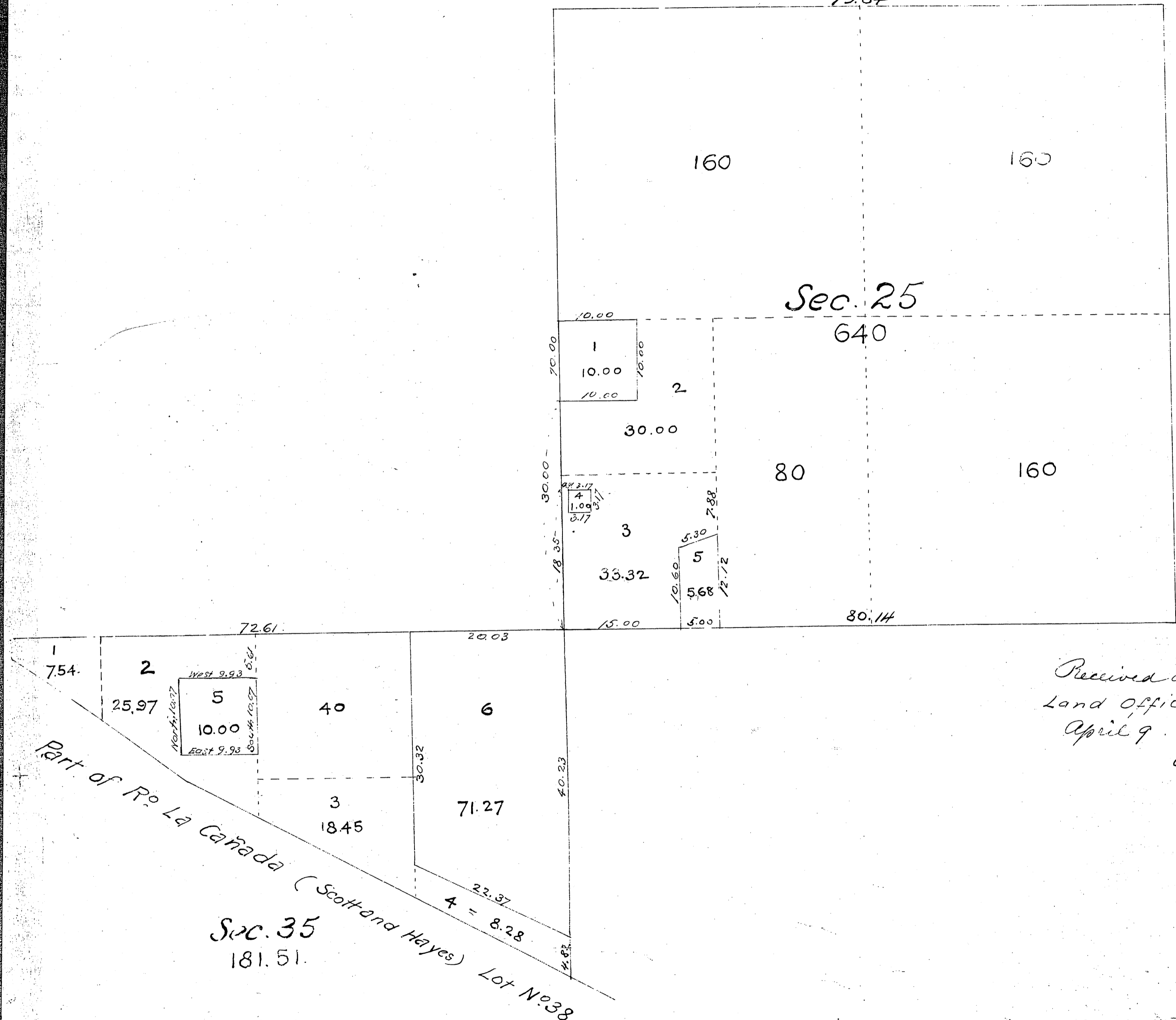
The above map of Township No. 2 North, Range No. 13 West of the San Bernardino Meridian, California, is strictly conformable to the field notes of the survey thereof on file in this office, which have been examined and approved.

U.S. Surveyor General's Office,  
San Francisco, California,  
August 11, 1911.

*E. H. Archer*  
U. S. Surveyor General,  
for California.

Supplemental Plat of Sections 25 and 35 in  
 Township N<sup>o</sup> 2 North, Range N<sup>o</sup> 13 West, San Bernardino Meridian  
 California

T 2 N  
 R 13 W  
 (4)



Received and filed in U.S.  
 Land Office Los Angeles  
 April 9 1901  
 A. J. Crookshank  
 Register

Scale 10 chains = 1 inch

The above supplemental plat of Sections 25 and 35 of Township N<sup>o</sup> 2 North Range N<sup>o</sup> 13 West San Bernardino Meridian California correctly shows the areas as amended in conformity to the field notes of survey and to instructions from the General Land Office regarding irregular boundaries of fractional lots contained in letters E, dated July 21<sup>st</sup> August 6<sup>th</sup> and September 21<sup>st</sup> U.S. Surveyor General's Office San Francisco California October 1<sup>st</sup> 1900.

J. M. Gleaves  
 Surveyor General

