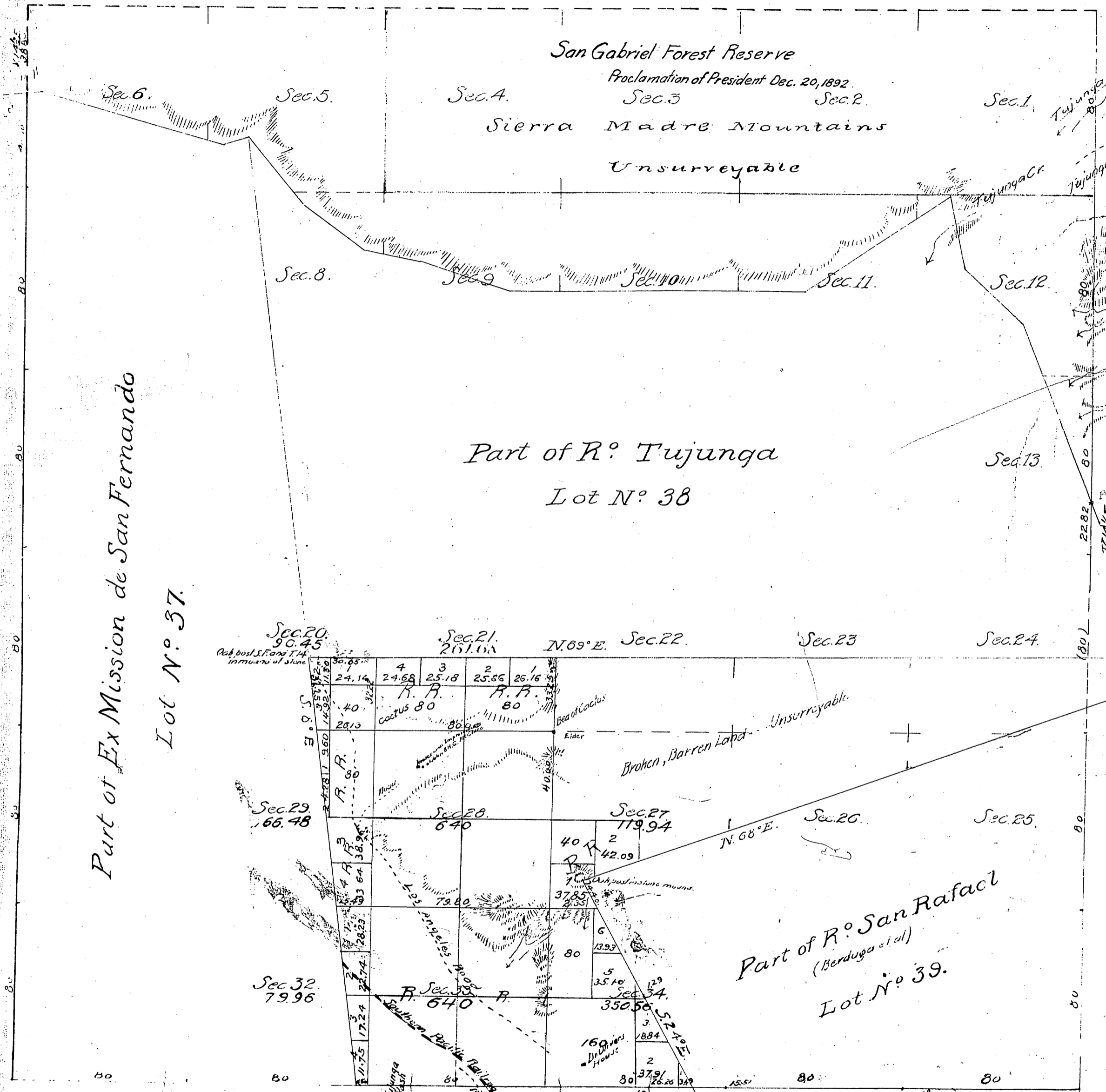


Township N° 2 North

Range N° 14 West

San Bernardino Meridian.



Part of Ex Mission de San Fernando

Lot N° 37

Part of R° Tujunga
Lot N° 38

Part of R° San Rafael
(Benduga et al)
Lot N° 39.

Surveys Designated	By whom Surveyed	Date of Contract	Amount of Surveys	When Surveyed
Township lines colored brown.	Henry Hancock	Dec. 30 th - 1873		1854
Boundaries of Lot 38	"	(cont) Sept. 1 st 1858		1858
" " " 37	Compiled in Surv Genl Office			May 25 - 1869
" " " 39	G. H. Thompson	(cont) Nov. 23 - 1869		1869
Township line colored blue	M. G. Wheeler	Sept. 4 - 1874		1874
lines " red	W. H. Norway	July 31 - 1875		1875
" " green	John Goldsworthy	Aug. 16 - 1875		1876
Ranch " blue	"	"	1 ml. 30chs. 78 lks. 0 ahs. 76chs. 90 lks.	1876
Section lines	"	"	7" 8" 19"	Feb. 29 - 1876

For Sec. 5 See C.S. 9141

C.S. 9092 For R. Lines & S. Lines of Sec. 35 & 36

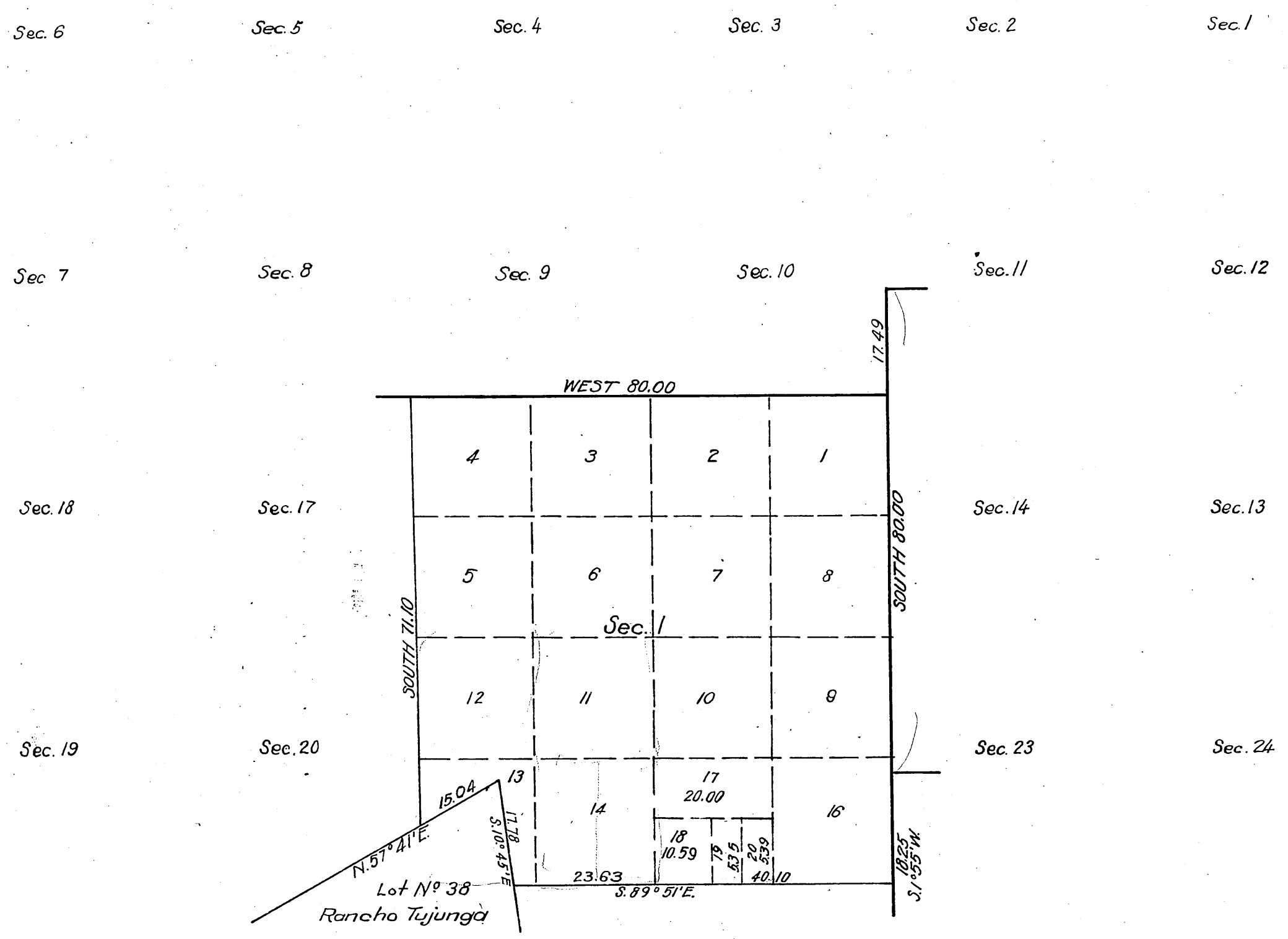
Field Notes For 50 Line Sec. 34
See N127 Page 82.
Field notes north of West Top lines Sec. C.S. 7848

Township No 2 North, Supplemental Plat of Section 1, Range No 14 West, San Bernardino Meridian, California.

RECEIVED
U.S. LAND OFFICE
LOS ANGELES Cal.
Date Jun. 25, 1920
Hour 9:00 am

Scale 20 chains to an inch

This supplemental plat is authorized by the
Commissioner of the General Land Office
by letter dated May 3, 1920



Sec. 29 This supplemental Plat showing the subdivision of Lot 15, Section 1, T.2N., R.14 W., San Bernardino Meridian, California, plat approved May 6, 1903, is made for the purpose of obtaining the area and legal description of the subdivision thereof to accommodate homestead entry Los Angeles 025689 of John C. Murphy, which embraces the E 1/2 SE 1/4 of above lot of said section, and is hereby approved.

U.S. Surveyor General's Office
San Francisco, California
May 21, 1920

Louis H. Moore
U.S. Surveyor General for California.

Filed in U.S. Land Office,
Los Angeles, Cal.
June 25, 1920 -
B. B. Shores
Register.

Areas in Acres	
Public Land	
Indian Reservation	
Indian Allotments	
Mineral Claims	
Water Surface	
Total Area	

Scale 40 chains to an inch
Mean Magnetic Declination

Surveys Designated	By Whom Surveyed	Group		Amount of Surveys			When Surveyed	
		No.	Date	Mls.	Chs.	Lks.	Begun	Completed

The above map of Township No. _____ Range No. _____ of the _____ Meridian _____ is strictly conformable to the field notes on the survey thereof on file in this office, which have been examined and approved

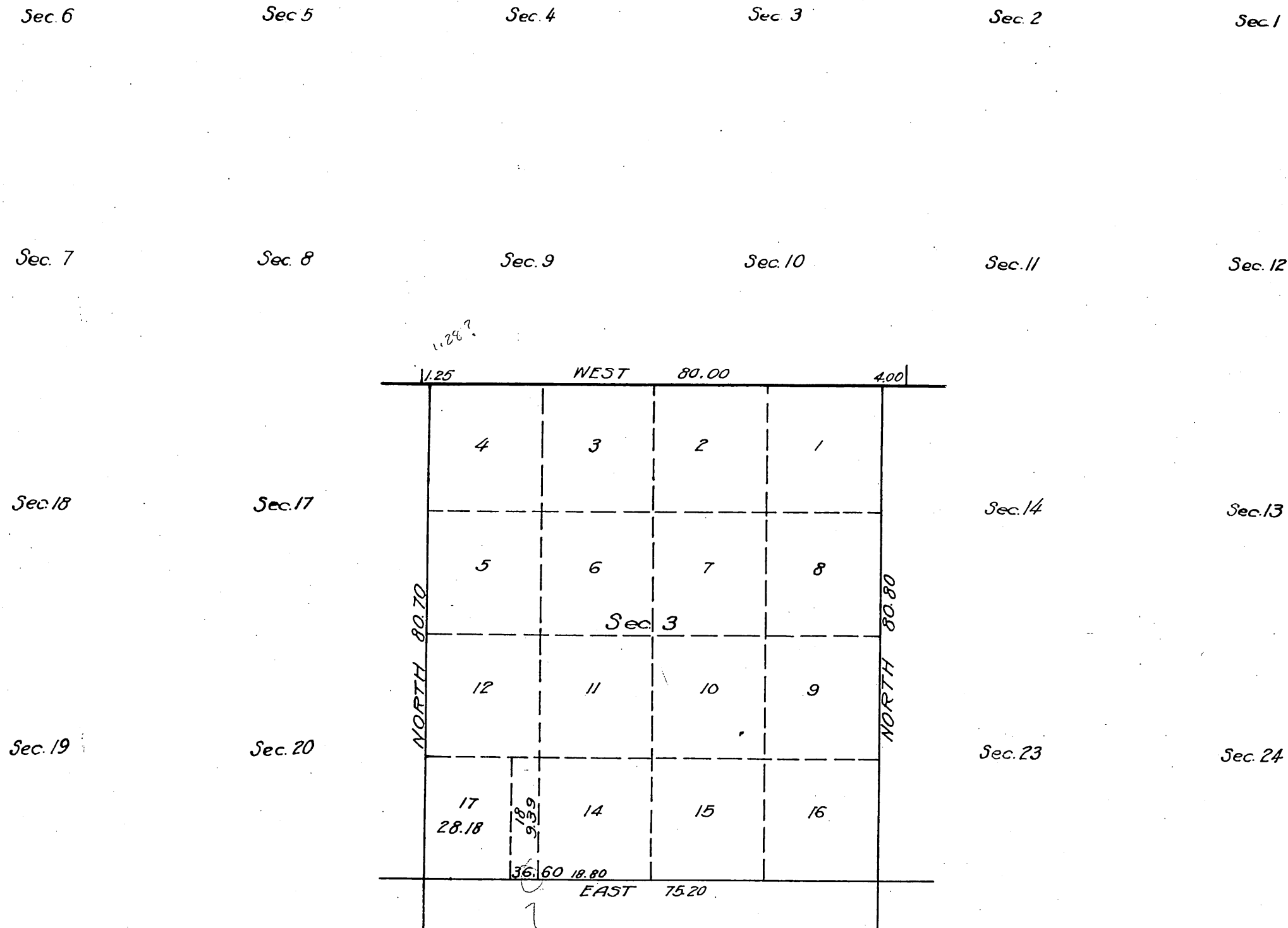
U.S. Surveyor General's Office }
Surveyor General.

Township N^o 2 North, Supplemental Plat of Section 3,
Range N^o 14 West, San Bernardino Meridian, California

RECEIVED
LAND OFFICE
LOS ANGELES, CALIF.
Date JUNE 25, 1920
Hour 9th A.M.

Scale 20 chains to an inch

This Supplemental Plat is authorized by the
Commissioner of the General Land Office by letter
Los Angeles 024301 "E" Jod dated May 17, 1920.



Sec. 18

Sec. 17

Sec. 14

Sec. 13

Sec. 19

Sec. 20

Sec. 23

Sec. 24

Sec. 30

Sec. 29

Sec. 31

Sec. 32

This supplemental Plat, showing the subdivision of Lot 13, Section 3, T.2N., R.14W., San Bernardino Meridian, California, Plat approved May 6, 1903, is made for the purpose of obtaining the area and legal description of the subdivisions thereof to accommodate homestead entry Los Angeles 024301 of Mary Oliver, widow of Eugene T. Oliver, which embraces a portion of above Lot of said section, and is hereby approved.

U.S. Surveyor General's Office
San Francisco California
May 28, 1920

Wm. H. Mead
U.S. Surveyor General for California

Filed in U.S. Land Office,
Los Angeles, Cal.
June 25 1920
B. D. Groves
Register

Areas in Acres	
Public Land	
Indian Reservation	
Indian Allotments	
Mineral Claims	
Water Surface	
Total Area	

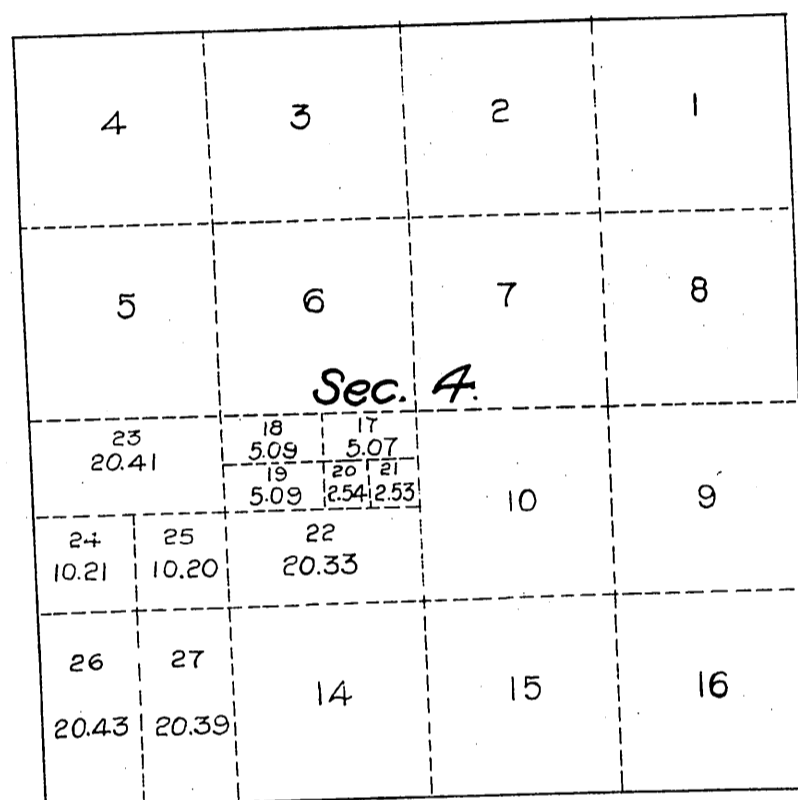
Scale 40 Chains to an inch
Mean Magnetic Declination

Surveys Designated	By whom surveyed	Group		Amount of Surveys			When Surveyed	
		N ^o	Date	Mls.	chs.	lks.	Began	Completed

The above map of Township N^o _____ Range N^o _____ of the _____ Meridian _____ is strictly conformable to the field notes of the survey thereof on file in this office, which have been examined and approved.
U.S. Surveyor General's Office }
Surveyor General.

SUPPLEMENTAL PLAT OF SECTION 4
TOWNSHIP N^o2 NORTH, RANGE N^o14 WEST,
S.B.M. CALIFORNIA.

Accepted per letter "E"
dated Jan 7-1911.



Note:—This supplemental diagram is made for the purpose of securing a legal designation for those parts of lots 11, 12 and 13 as shown on plat approved May 6, 1903, covered by H.E. 06857 of Bernard C. A. Molitz, dated July 19, 1909. The descriptions of the lottings of the above H.E. 06857, in said lots 11, 12 and 13, originally given as the E 1/2 SW 1/4 SW 1/4, SE 1/4 NW 1/4 SW 1/4, N 1/2 NW 1/4 SW 1/4, S 1/2 NW 1/4 NE 1/4 SW 1/4, SW 1/4 NE 1/4 NE 1/4 SW 1/4, are now lots 27, 25, 23, 19 and 20 respectively.

Scale: 20 chains to the inch.

The above supplemental diagram of the subdivision of lots 11, 12 and 13, Section 4, Township N^o2 North, Range N^o14 West, San Bernardino Meridian, California, correctly shows the amendments thereof in accordance with instructions contained in Department letter "E" dated July 14, 1910.
U.S. Surveyor General's Office.
San Francisco, California.
December 21, 1910.

E. H. Archer
U.S. Surveyor General
for California.

