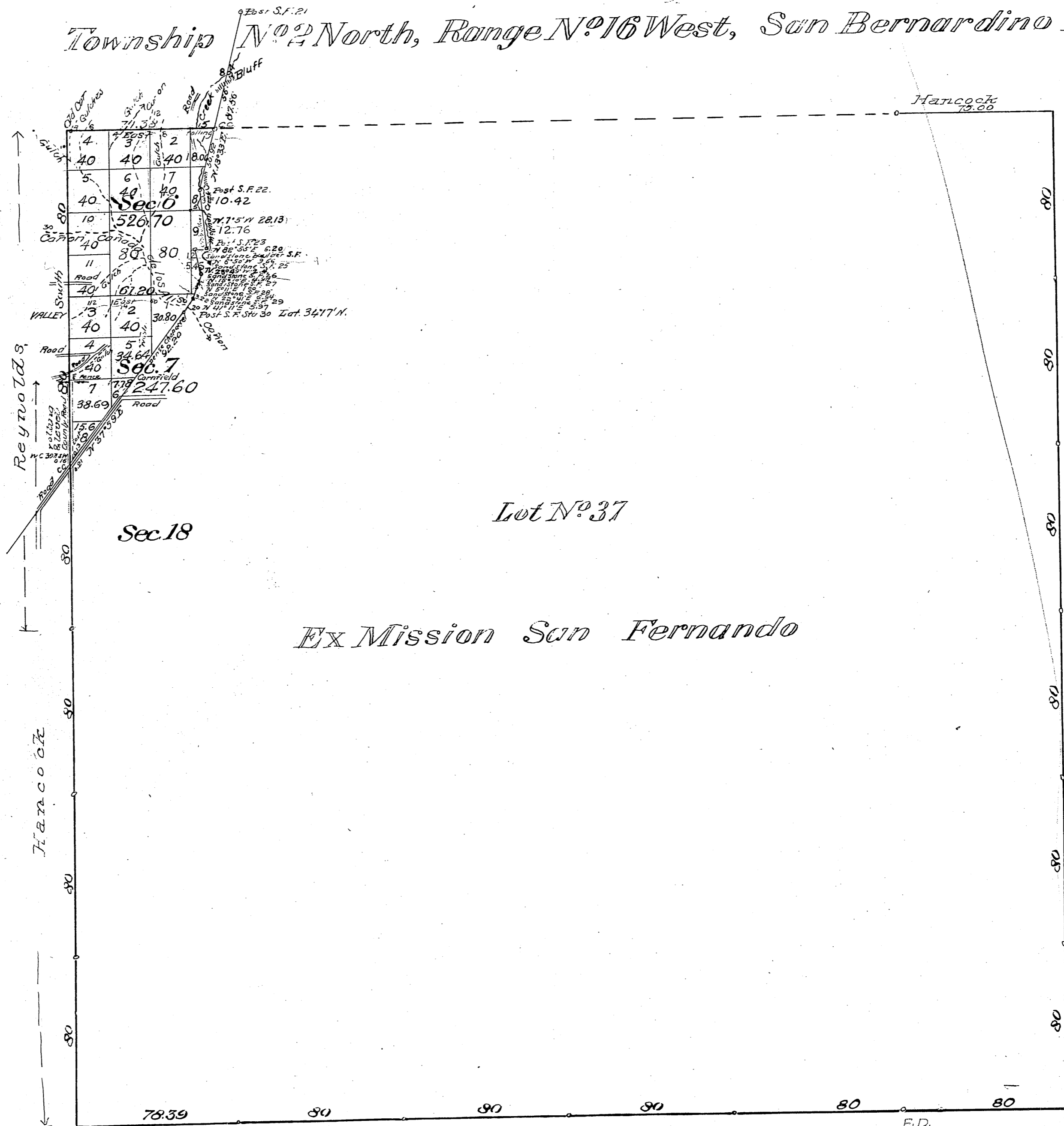


T2N  
R16W

Township N<sup>o</sup> 2 North, Range N<sup>o</sup> 16 West, San Bernardino Meridian, ①  
California.



Area of Public Land 774.30 Ac.  
" " Private Grant 22,227.00 Ac.  
Aggregate 23,001.30 Ac.

Filed in U.S. Land Office  
Los Angeles, Cal. Oct. 9, 1895

Registered

Ex Mission San Fernando

Mean magn. decl. N4° 30' East

Surveys Designated	By whom surveyed	Contract		Amount of Surveys			When Surveyed
		No	Date	MLS	CMS	LAS	
East boundary of Township	W. W. Norris		Oct. 12. 1853				1854
S and parts of N & W bds of Twp	H. Hancock		Dec. 30 1853				1854
Part of W bound of Twp	W. P. Reynolds		Mar 19 1872				1872
Boundaries of Lot N <sup>o</sup> 37	H. Hancock		Sept 1. 1858				1858
Parts of N & W bds of Twp outside of Lot 37	J. R. Glover	382	Nov. 20 1844				1844
Boundaries of Lot N <sup>o</sup> 37 resurveyed	"	"	"				"
Section lines new	M. P. Reilly	383	"		61	33	1895
Connecting lines "	"	"	"		3	43	Nov 30, 1895

F.D.  
C.S. 9394 - Hancock's notes on bdy. of Ex Mission de S.F.  
Gov. Field notes north boundary See C.S. 9044  
North bdy of Ro. C.S. 9254  
Part of West Twyp. line C.S. 9292  
Nwly Boundary of Ro. C.S. 9358