

~~Body of Rancho Santa Ana del Chino C.S. 9281~~  
~~Part of Sec. and Rancho lines C.S. 9316~~  
~~A.R.S. bdy's C.S. 9330 & C.S. 9332~~

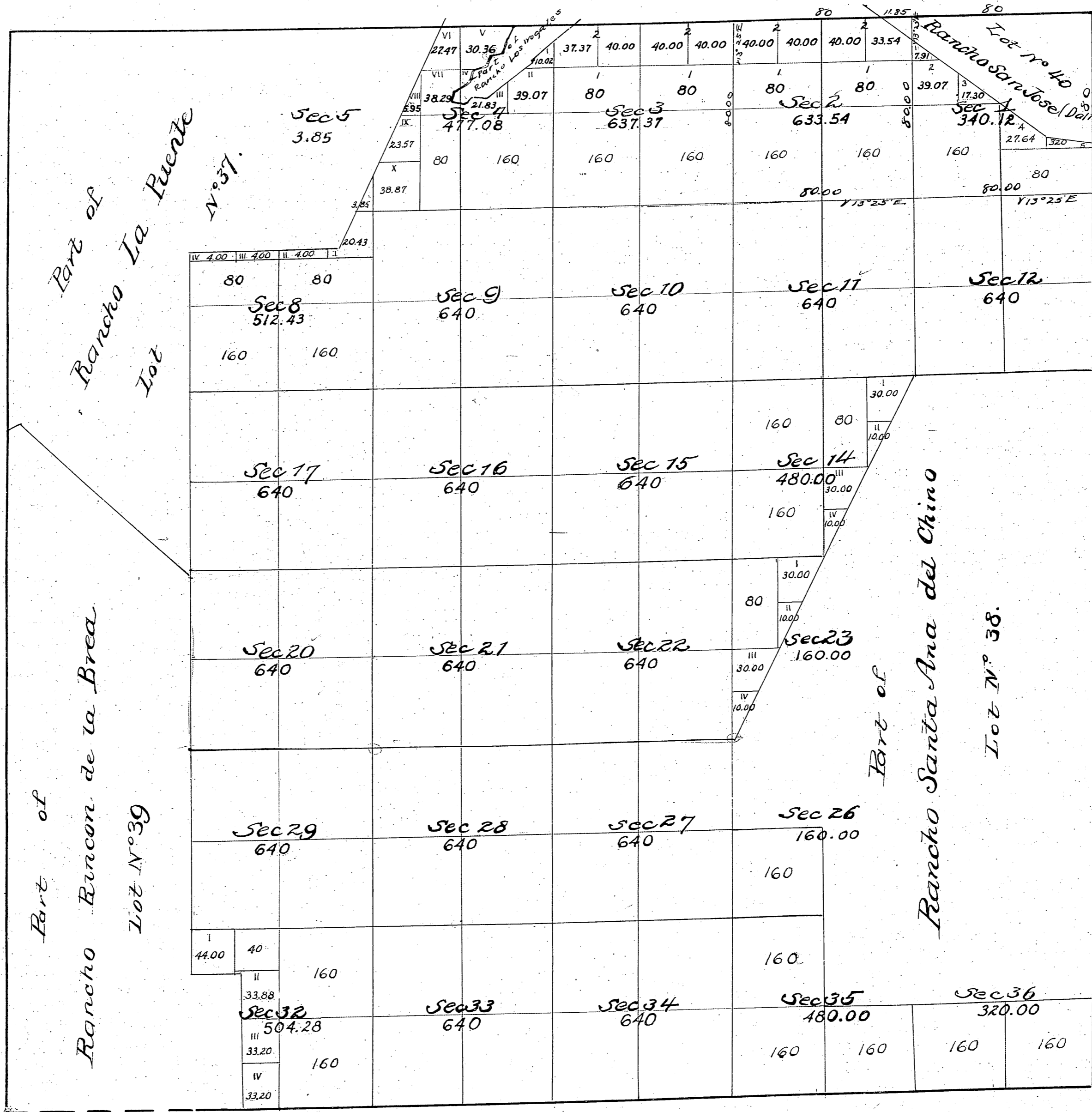
Aggregate Area of Public Land 14,615.01 Acres  
 Estimated " Private Owners 8,240.19 "

Aggregate 22,855.20 "  
 Rancho Rincon de La Brea Bdy. ~ C.S. 9264

Surreys Designated	By whom surveyed	Date of Contract	Amount of Surreys	When Surreyed
Township lines Colored blue	Henry Hancock	July 5 <sup>th</sup> 1853		1853
Rest of Township lines	"	May 17 <sup>th</sup> 1858 and instructions 1862 1865	4 sec 150 Chs 00 1/4s	1858
Boundaries of Rancho Los Angeles	"	Instructions Sep. 1858		1858
" Lot No 37	"	October 2 <sup>nd</sup> 1857		1857
" " 38	Thomas Sprague	December 30 <sup>th</sup> 1860		1864
" " 39	Henry Hancock	September 15 <sup>th</sup> 1858		1858
Section lines	"	May 17 <sup>th</sup> 1858 and instructions 1862 1865	37 " 14 " 96 "	December 1858

Gov. field notes Sec. 31 to 36 C.S. 7850.  
 Hancock Survey, Sub. of part of T.W.P.C.S. 9111  
 Por. of S.E. & W. Bdy. C.S. 9240

Bo Santa Ana del Chino C.S. 9172



Aggregate Area of Public Land 14308.67  
 Estimated Private Grants 8546.53  
 Aggregate 22855.20

Notes on Rancho Bdy C.S. 9256  
 Rancho La Puente Bdy. - C.S. 9268  
 Interior Sec lines C.S. 9331  
 Field notes for Rancho San Jose see C.S. 9435

Surveys Designated	By whom surveyed	Date of Contract	Grants of Surveys	When surveyed
Boundaries of Lot N <sup>o</sup> 40	Thompson & Reynolds	First Thompson & Reynolds Dec. 17 <sup>th</sup> 1873		1868 and 1874

Gov't. field notes C.S. 9169  
 Gov. field notes C.S. 7850  
 Sec. 31 to 36  
 W. Bdy. Twp. C.S. 9117  
 Field notes on survey of Rancho Santa Ana  
 Del Chino sec C.S. 9172 & 9256