

Area of land previously surveyed ~ 617.46 Acres
 " " surveyed by John B. Treadwell ~ 34.89 " "
 Estimated area of Private Grants ~ 22,354.29 " "
 Aggregate area of Township ~ 23,006.64 " "

Rancho Rincon de La Brea Bdy. C.S. 9264
 Rancho La Habra Bdy's ~ C.S. 9267
 Rancho La Puente Bdy's ~ C.S. 9268
 W. and portions of N&S. bdy C.S. 9306

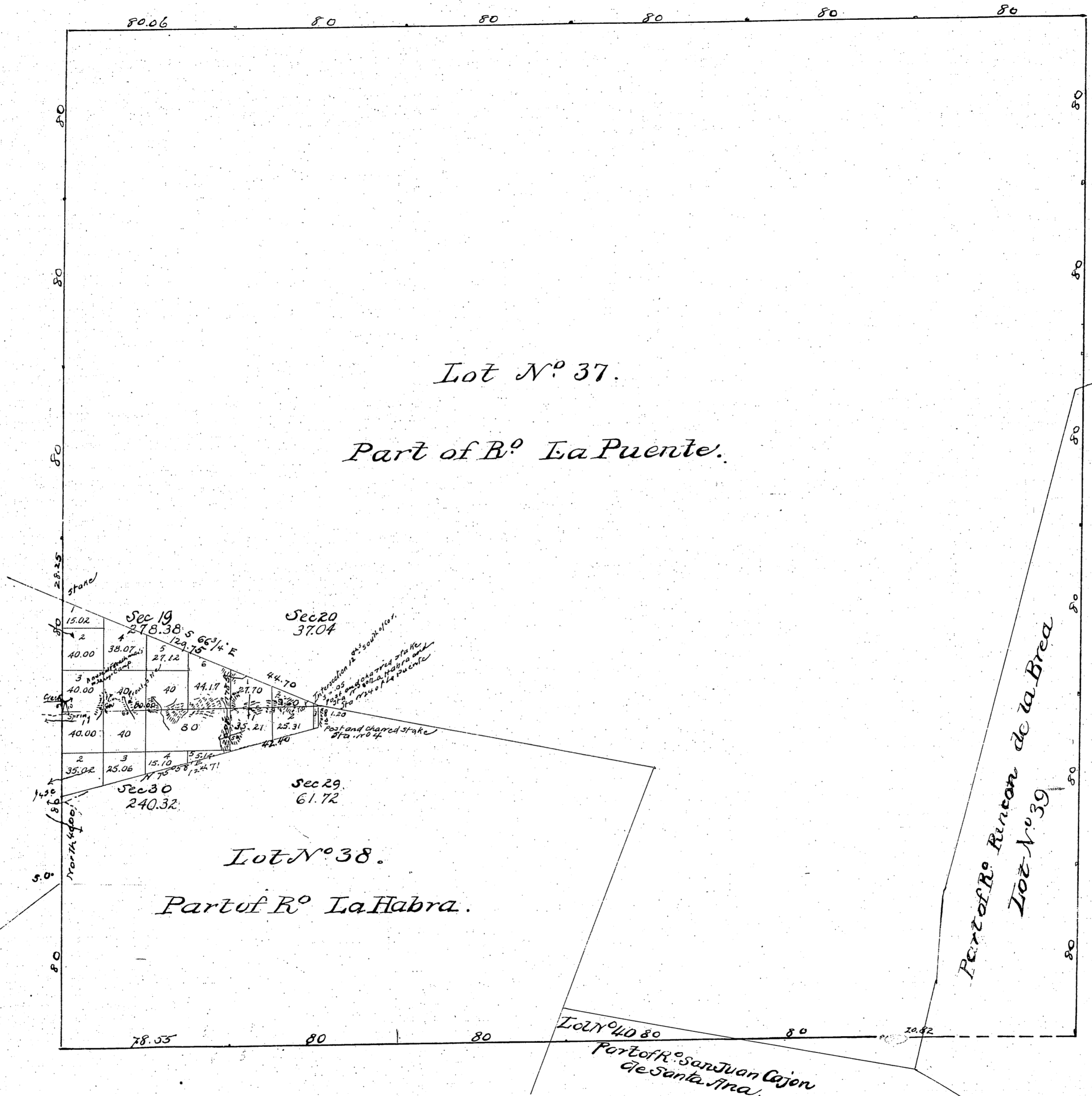
Gov. field notes See C.S. 7847
 " " " C.S. 9042
 E. bdy. Twp. " C.S. 9117

Surveys Designated	By Whom Surveyed	Date of Contract	Amount of Surveys	When Surveyed	Mean Declination
For Exhibit of Lines previously surveyed see map of this Township approved October 2 nd 1876					
Part of South Bdy. of Tp. Resurveyed.	John B. Treadwell	Instructions Dec 8 th 1892	2 Miles to chs 88 Mc	1893	} 14° 44' E.
Section Lines	"	"	0 " 20 " 7 "	"	
Private Grant Lines Resurveyed	"	"	2 " 40 " 09 "	May 3 rd 1893	

Area of Public Land presently surveyed 34480
Estimated Area of Private Grants 22389.18
Aggregate Area of Townships 23006.64

Rancho Rincon de La Brea Bdy. C.S. 9264
Rancho La Habra Bdy's C.S. 9267
Rancho La Puente Bdy's C.S. 9268
W. and portions of N & S. bdy C.S. 9306

Gov field notes see C.S. 7847
" " " " C.S. 9042
E. bdy Twp. " " C.S. 9417



Aggregate Area of Public Land 617.46 acres
Estimated Private Grants 22389.18
Aggregate 23006.64

Variation reported by Goldsmithy 14° 28' East.

For field notes see C.S. 7847
" " " " C.S. 9042

Surveys Designated	By whom surveyed	Date of Contract	Acres of surveys	When surveyed
Township lines	Henry Hancock	July 5 th 1853		1853
Boundaries of Lot No 37		(last) October 1857		1857
" " " 38		Sept. 1 st 1858		1858
" " " 39				1858
" " " 40	Chas F Hoffmann	Nov 26 th 1868		1868
Ranch lines colored blue	John Goldsmithy	October 1 st 1875	124.70 & 22.1 ks	1876
Section line 20			1.79.13	May 30 th 1876