

T 2 S
R 12 W
①

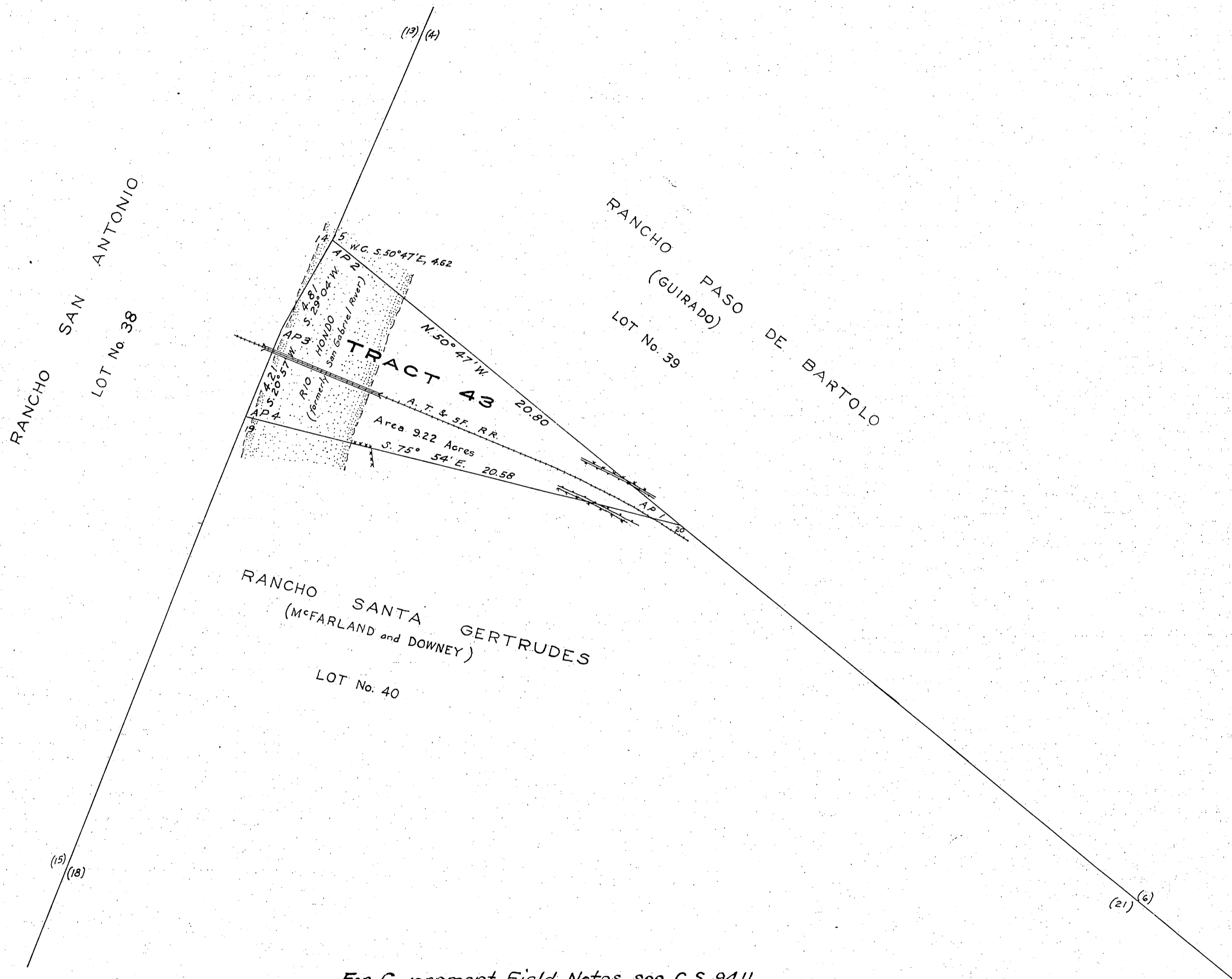
TOWNSHIP N° 2 SOUTH, RANGE N° 12 WEST, SAN BERNARDINO MERIDIAN, CALIFORNIA.

TRACT 43

RECEIVED

AUG 24 1931

U. S. Land Office,
LOS ANGELES, CAL.



Latitude 33° 56' N at cor. No. 1 of
Longitude 118° 07' W Tract 43.

For Government Field Notes see C.S. 9411

0 1 2 4 8
Scale 4 Chains to an inch.

Area Surveyed 9.22 Acres.

LINES DESIGNATED	BY WHOM SURVEYED	GROUP NO	DATE	MILEAGE		WHEN SURVEYED	
				MLS	CHS	BEGUN	COMPLETED
Bdrs. Tract 43	Francis E. Joy, U.S.C.E.	206	July 19, 1930	0	50.40	Oct. 29, 1930	Oct. 30, 1930

Orig. MSP
Exam. OBT

Office of U.S. Supervisor of Surveys
Denver, Colorado, Jan. 24, 1931.

The above plot of Tract 43 in Township No. 2 South, Range No. 12 West, of the San Bernardino Meridian, California, is strictly conformable to the field notes of the survey thereof which have been examined and approved.

Francis E. Joy
U.S. Supervisor of Surveys

DEPARTMENT OF THE INTERIOR
GENERAL LAND OFFICE

Washington, D.C., March 17, 1931
The survey represented by this plat having been correctly executed in accordance with the requirements of law and the regulations of this office, is hereby accepted.

The C. Howell
Assistant Commissioner.

Traced by V.H.B. 9-4-31