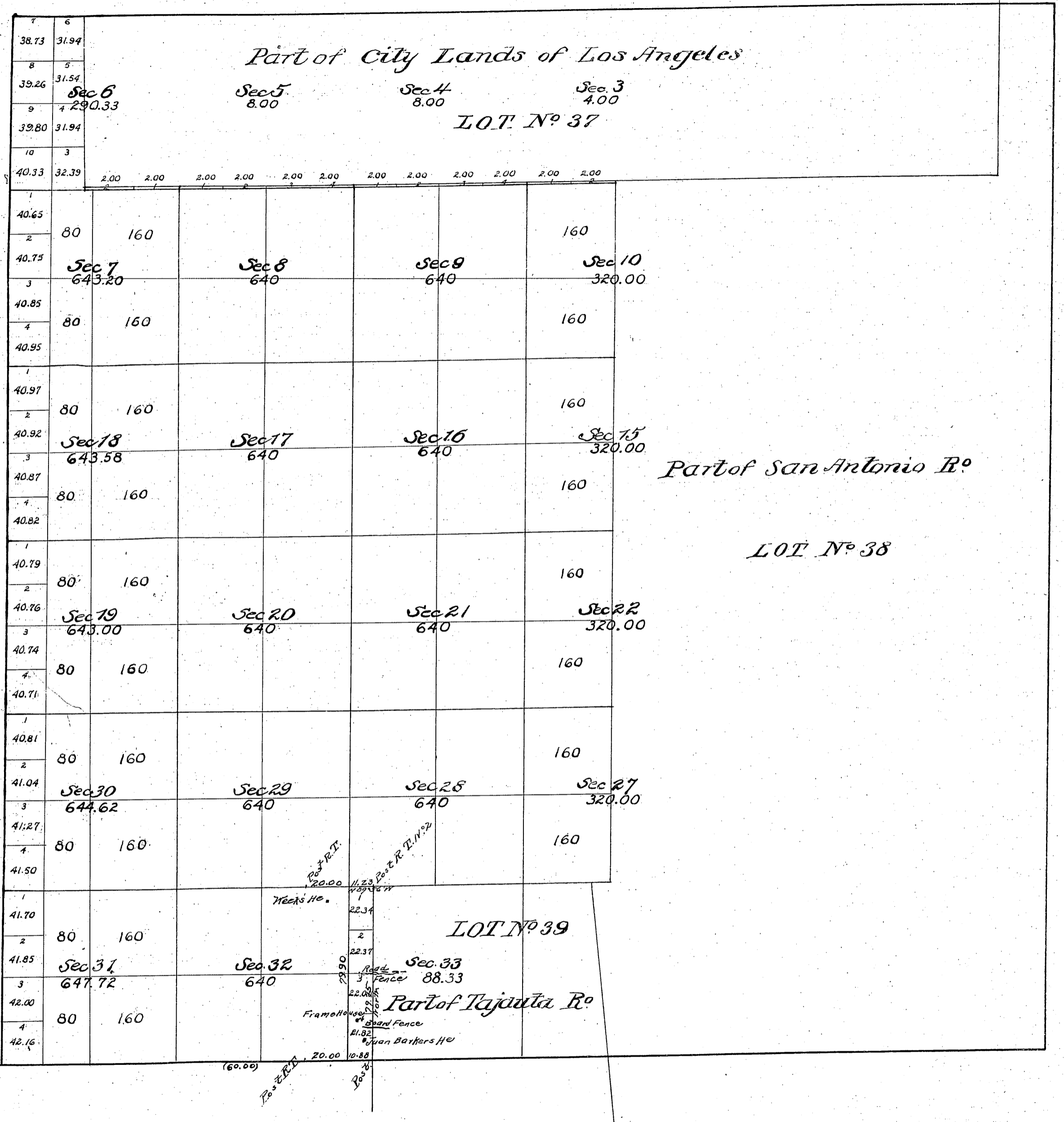


Township N^o 2 South, Range N^o 13 West, San Bernardino Meridian.

T2S
R13W
①



Public Land Surveyed by Hansen 10,164.12 Acres

Aggregate Area of Public Land Estimated 2,498.33

Private Grants 10,412.45

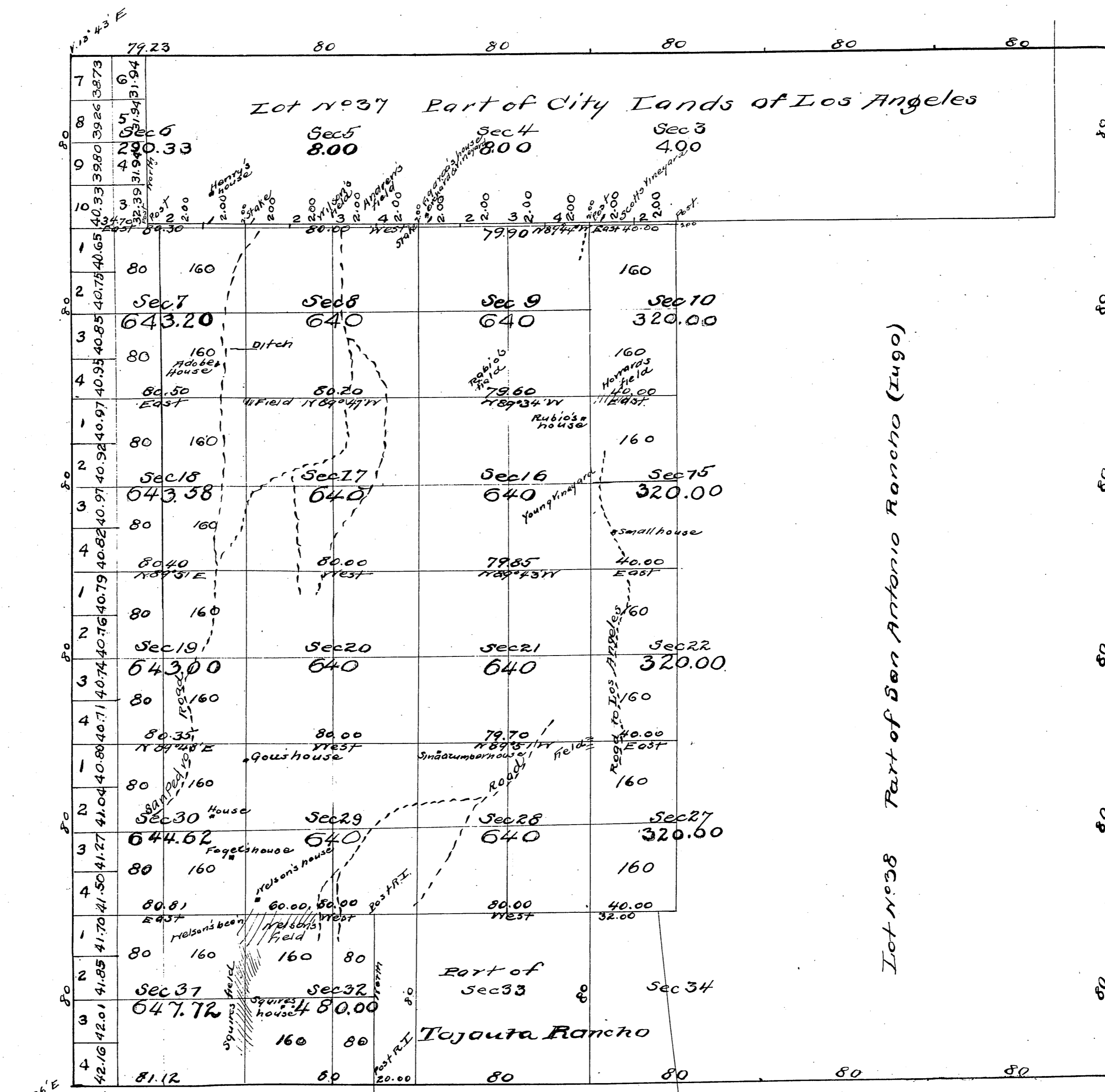
Aggregate 23,060.24

Part of N. bdy ~ C. S. 9348

Variation used by Goldsmith 14° East.

Surreys Designated	By whom surveyed	Date of Contract	Amount of Surreys	When surveyed
West Boundary of Lot N ^o 39 Section Line colored yellow re-survey	John Goldsmithy	January 20 th 1874	0.145.79 Chs 75 L. No.	1874
		" " "	0.79.90	January 22 nd 1874

For Govt Field Notes - Boundary Survey of Rancho Tajauta, see C. S. 9429



Forfield notes Sec. 15 see M. 27-179

Lot No. 38 Part of San Antonio Rancho (Ingo)

Aggregate Area of Public Land 16412.45 Acres
 Estimated Area of Private Grants 12647.79 "
 Aggregate 23060.24 "

Variation used by Hansen 14°15'E
 Sec and S. body lines C.S. 9323 & 9334

Surveys designated	By whom surveyed	Date of Contract	Amount of Surveys	When Surveyed
Township lines	Henry Hancock	July 5 th 1853		1853
Boundaries of Lot No. 37	"	Inst. Sept. 1 st 1858		1858
" " 38	"	" "		1858
" " Tojauta RR	George Hansen	" Feb. 18 th 1868		1868
Section lines	"	Feb. 7 th 1868	28 miles 63 chs 41 lks	Feb 7 to 22 nd 1868

Field Notes: bet Secs. 30-31 M 27-187
" " C.S. 9244