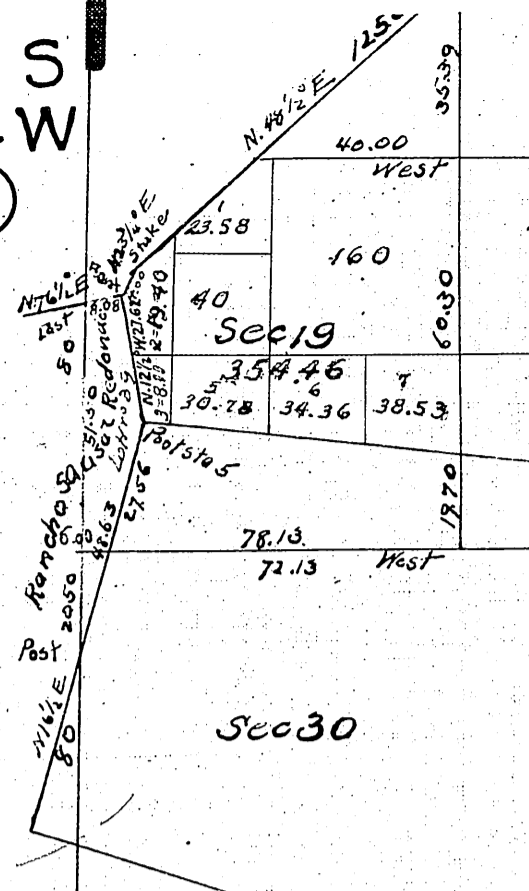
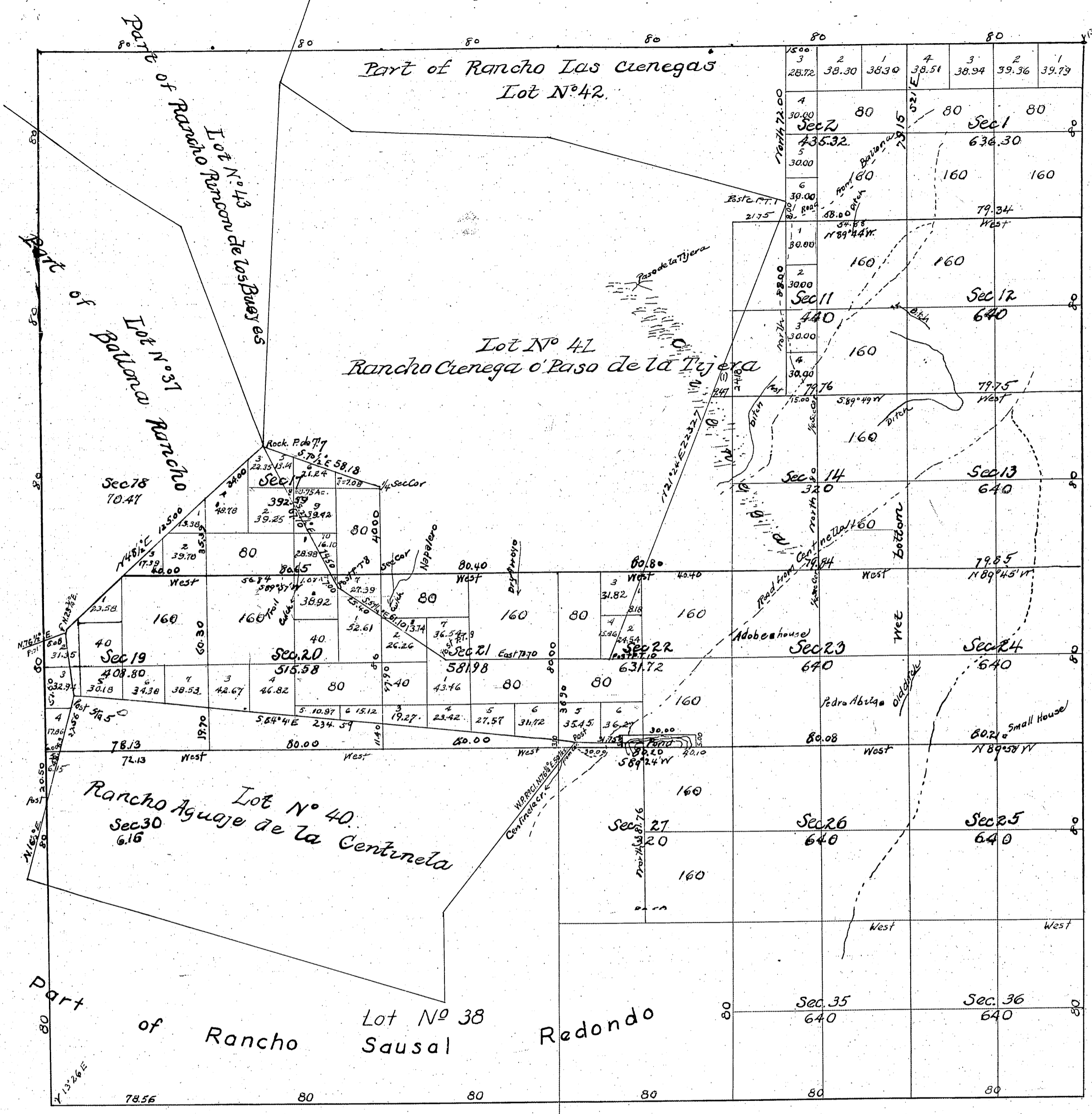


Township N° 2 South

Range N° 14 West

San Bernardino Meridian

T 2 S
R 14 W
①



field notes Sec 15 Sec N. 27 179

Estimated Area of Private Grants
Aggregate
130660.24

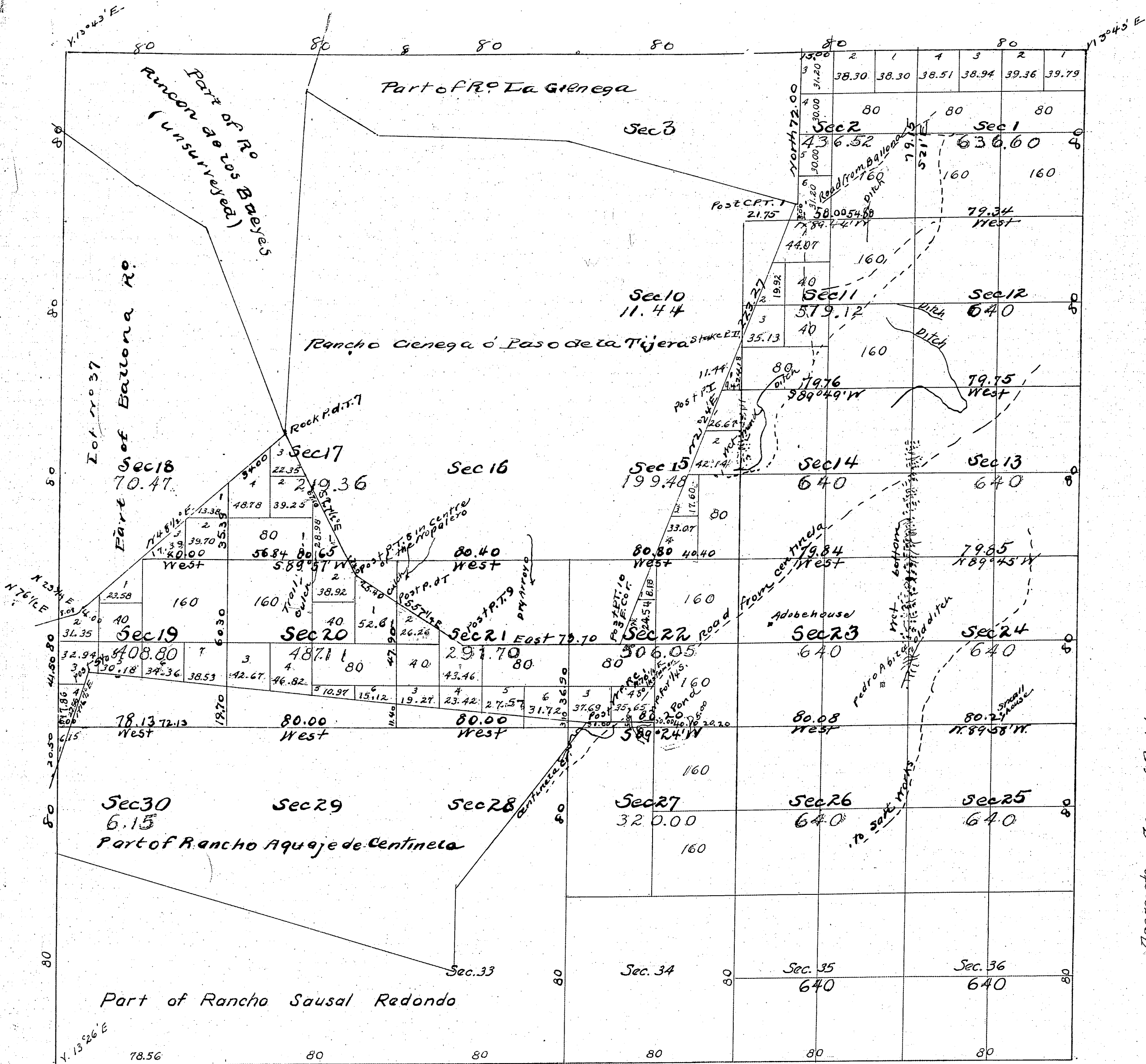
Variation used by Hansen 1/2° E
Sec and S. by lines 659323 & 9334

Aggregate Area of Public Land
Estimated Area of Private Grants
Aggregate
9951.11 Acres
13034.33
23005.44

Variation are by Hansen 1/2° E East.

Secs. 30 31 M. 27 187
9244

Surveys Designated	By Whom Surveyed	Date of Contract	Amount of Surveys	When Surveyed
North boundary of Township	Henry Washington	Oct. 4 th 1852 & Jan. 27 th 1853		1853
Rest of Township lines	Henry Hancock	July 5 th 1853		1853
Boundaries of Lot N° 37	" "	Instructions April 17 th 1857		1858
" " " " 42	" "	" Sept. 1 st 1858		1858
" " " " 41 (exterior bound)	George Hansen	" Feb. 8 th 1868		1868
" " " " 41 (area enclosed)	George H. Thompson	" "		1868
" " " " 40	George Hansen	" Feb. 8 th 1868		1868
" " " " 43	Located by U.S. Surveyor General			1871
" " " " 38	Located by George Hansen under instructions from U.S. Surveyor General			1868
Section lines	George Hansen	February 7 th 1868		1868



Aggregate Area of Public Land 99 32.80 Acres
 Estimated Area of Private Grants 18072.64 "
 Aggregate 23005.44 "

Variation used by Hansen 14.015' E.
 Interior Sec. lines C.S. 9248
 W. bdy of township - C.S. 9336
 Concerning Patents to parts Secs 10+11 see D:16711, O.R. 9424-287 state quitclaim to U.S.A. portions conveyed in error.

Field Notes: bet. Secs 25-36 M 27-187

Surveys Designated	By Whom Surveyed	Date of Contract	Amount of Surveys	When Surveyed
North boundary of Township	Henry Washington	Oct. 4 th 1852 and		1853
Rest of Township lines	Henry Hancock	Inst. Jan. 27 th 1853		1853
Boundaries of Lot No. 37	"	July 5 th 1853		1858
" " R. La Cienega	"	(Inst.)		1858
" " " Cienega o' Paso de la Tijera	George Hansen	" Feb. 8 th 1868		1868
" " " Aguaje de Centinela	"	" "		1868
" " " Sausal Redondo	Located by George Hansen under instructions from Survey Gen.			1868
Section lines	George Hansen	Feb. 7 th 1868	26 mls. 14 chs. 7 lks.	Feb. 19 th 1868