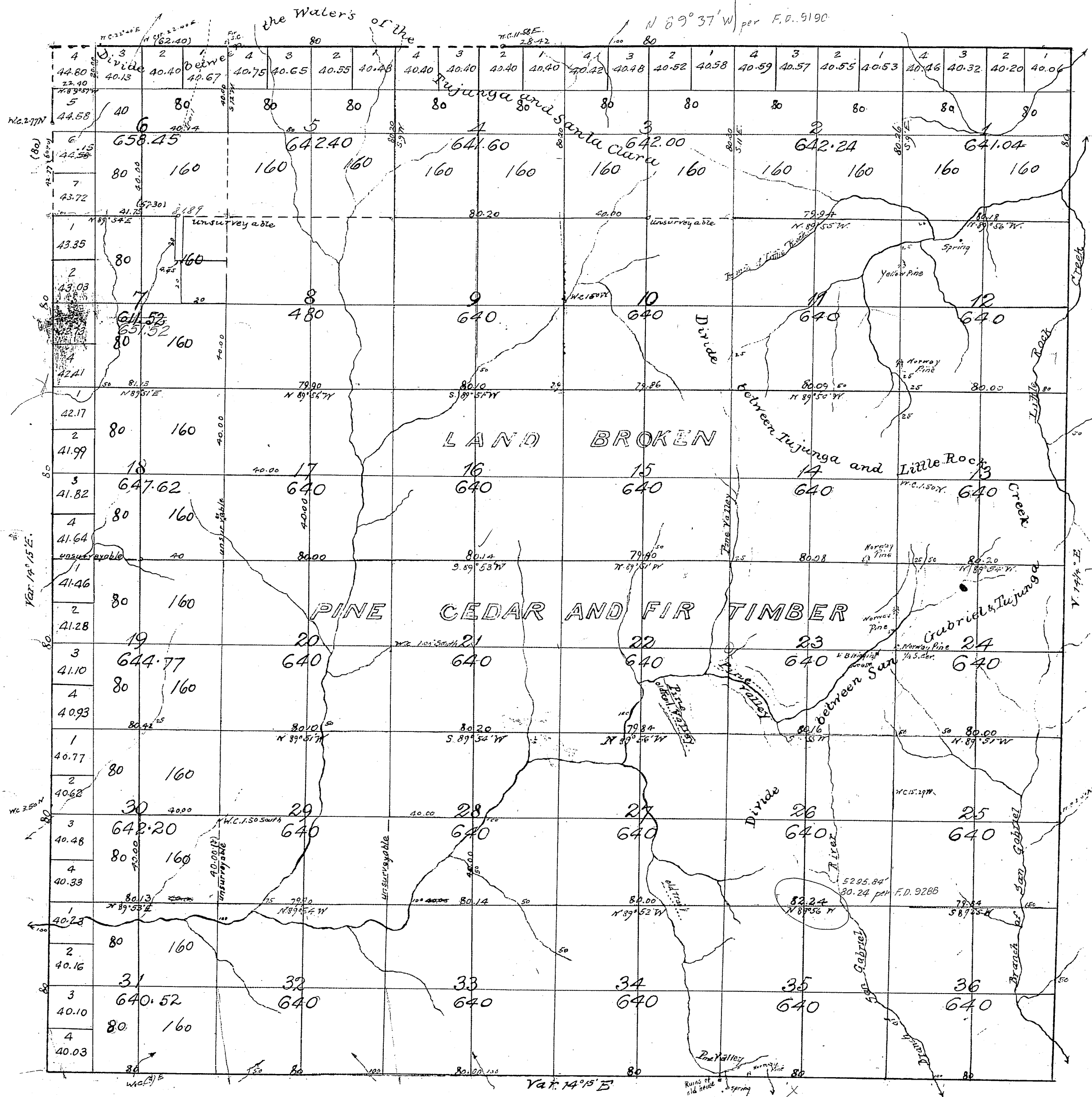


Township N° 3 North,

Range N° 11 West,

San Bernardino Meridian.

T3N
R11W
①



Interior Section Lines - C.S. 9288
 Gov't. Field Notes in Secs. 25 and 36 - C.S. 9018
 North & West Bdy. C.S. 9190
 S. bdy of Township - C.S. 9289

Var. Reported 14° 15' E

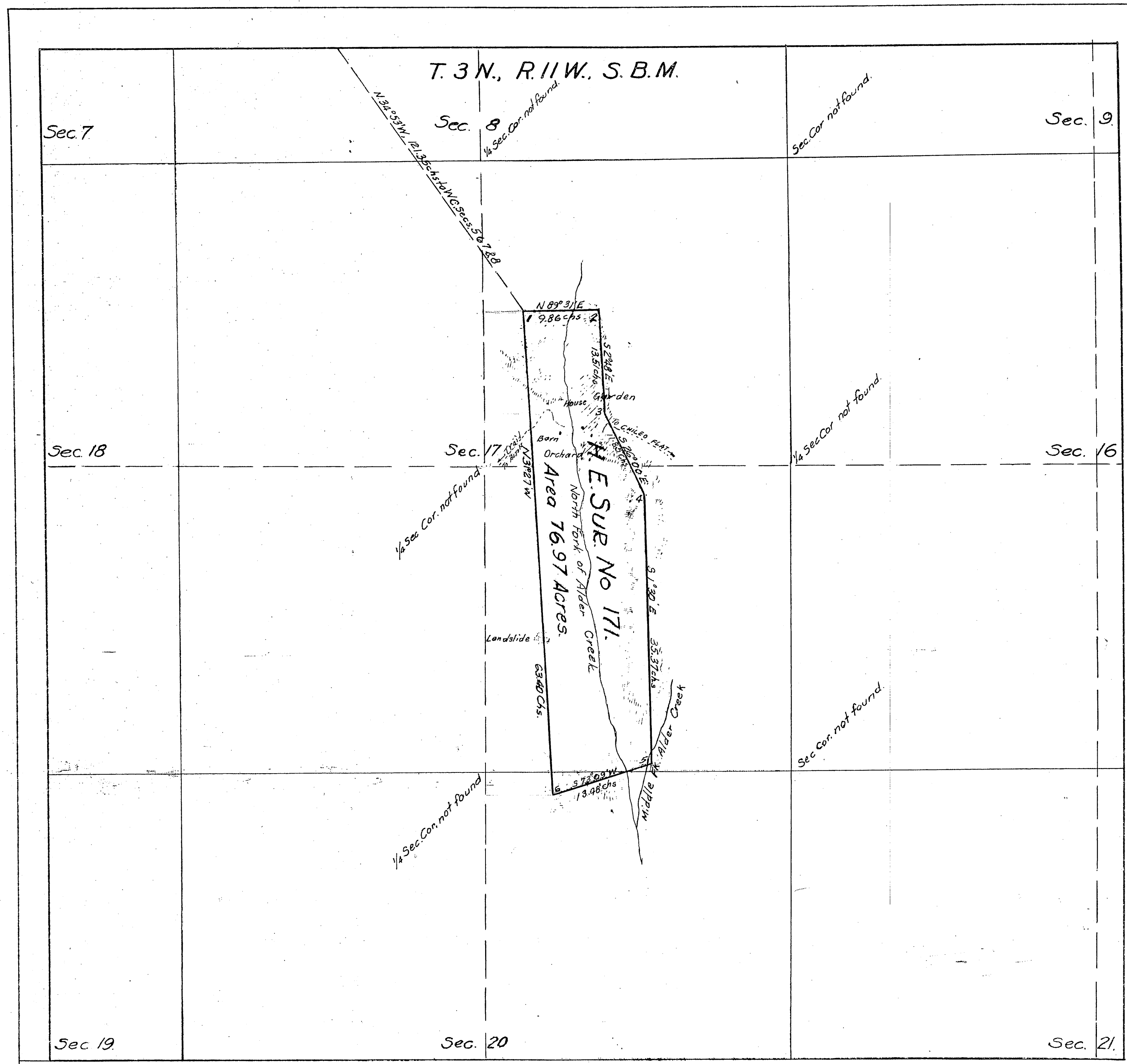
Surveys Designated	By whom Surveyed	Date of Contract	Amt of Surveys	When Surveyed
Township lines	W. H. Norway	July 31 st 1875	24 m ² 20 th 40 th	1875
Section "	"	"	61 " 84 85 "	October 19 th 1875

Public Land Surveyed 22,894.36 Acres
 Estimated area of unsurveyed land 200.00 "
 Aggregate 23,094.36 "

Signed: H. G. Rollins
 U.S. Surv Genl Cala.

(All of Township in San Gabriel Forest Reserve)

025305



Plat of
**HOMESTEAD
 ENTRY SURVEY**
 No. 171.
 in the
Angeles National Forest.
 in
 Section 17, surveyed, T3N, R11W.
 Section 20, surveyed, T3N, R11W.
 of the
**San Bernardino Meridian
 California.**

This plat of Homestead Entry Survey No. 171 State of California is strictly conformable to the field notes thereof on file in this office, which have been examined and approved.

U.S. Surveyor General's Office
 San Francisco, California.
 February 17 1916.

Frank H. Gould

U.S. Surveyor General
 for California.

Initials: U.G.
 Examined by J.M.W.

SCALE 10-chains to 1 inch.

Surveys Designated	By whom Surveyed	Inst. Cont. Group No	When Surveyed		Date of Approval
			Bequn	Completed	
Subdivisions	W.H. Norway.		July 31 1875	1875	April 13, 1876
H.E. Survey No 171.	Percy L. Day		February 9, 1915	April 13, 1915	April 16, 1915
	National Forest Examiner Forest Service				February 17, 1916

Areas in Acres	
H. E. Survey No 171	Conflicts
In Section	
In Section	
In Section	
In Section	
Total	76.97

Act of June 11, 1906	Act of June 30, 1914.
List No. 5-2380.	Dated August 22, 1914.
Latitude	34° 21' N.
Longitude	118° 03' W.
	Mag Decl. 15° 15' E.
	At Corner No. 1.