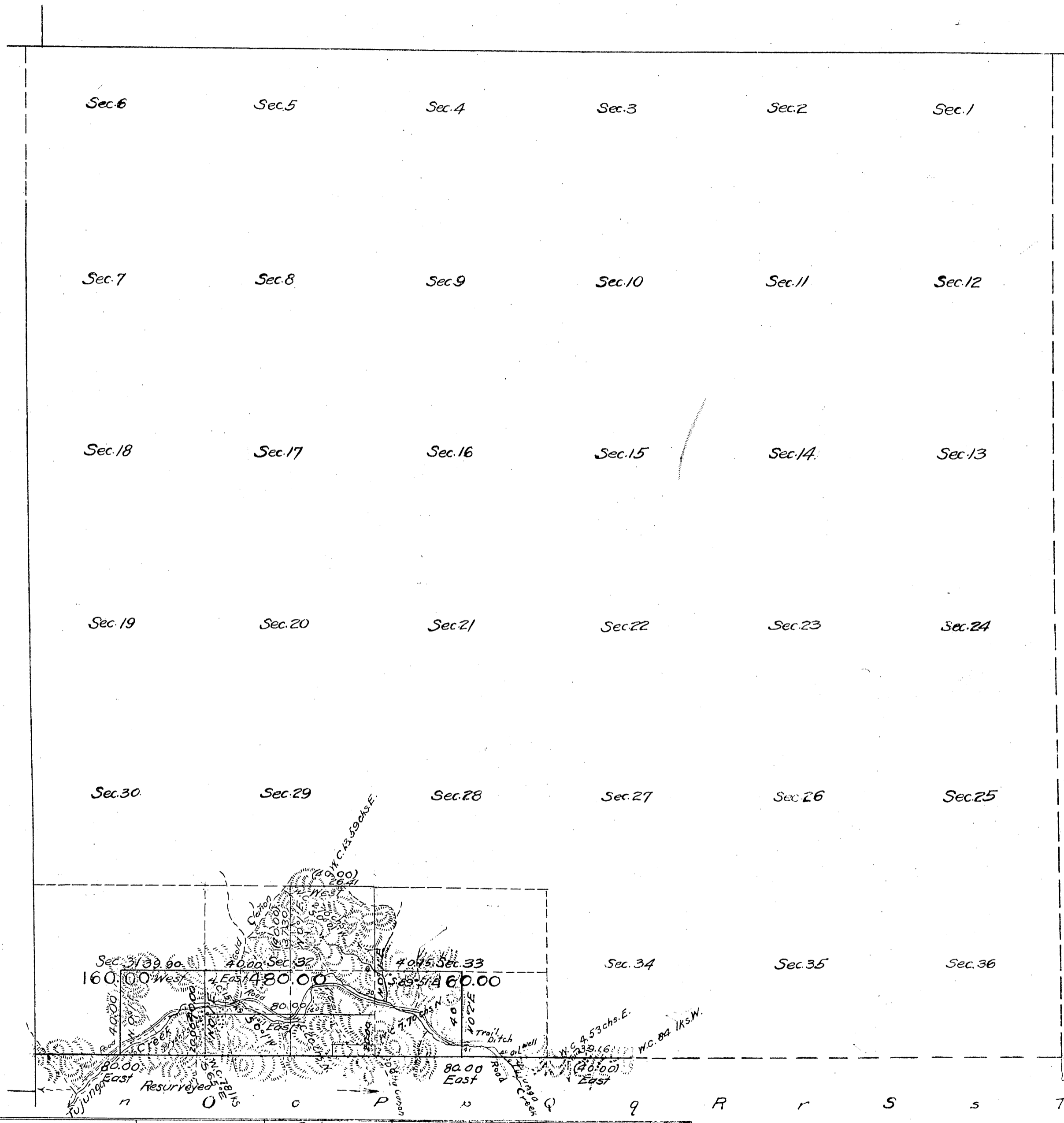


Township No 3 North, Range No 13 West, San Bernardino Meridian, California.

G f F e E d D c C b B a A

Govt. Field Notes
C.S. 9086 - All of N.B. of Twp.
C.S. 9090 - S.B. of Twp. by Norway (1875), Ross (1908)
C.S. 9181 - line in Sec's 31, 32 & 33
S. line Sections 33 to 36 - C.S. 9364
Section 33 - C.S. 9365

g
H
h
I
i
K
K
L
T
M
m
N



y
Y
x
X
w
W
v
V
u

Area	800.00 Acres
Public Land surveyed by Ross	800.00 Acres
Estimated area unsurveyed land	21,616.00 "
Aggregate	22,416.00 "

All of this Township lies within the Angeles National Forest.

Filed in U. S. Land Office,
Los Angeles, Cal.
MAY -2 1912
[Signature]
Register.

Areas in Acres.	
Public Land	
Indian Reservation	
Indian Allotments	
Mineral Claims	
Water Surface	
Total Area	

Scale 40 Chains to an inch
Mean Magnetic Declination
Lat. 34° 47' N } at Cor. of Secs 2, 3, 10 & 11, T. 2N, R. 13W.
Long. 118° 15' W

Surveys Designated.	By Whom Surveyed	Contract		Amount of Surveys		When Surveyed.	
		No	Date	Mls. Chs.	Iks.	Begun	Completed
N. bdy. of Twp	W. H. Norway	—	Oct. 10, 1879				1879
W. " " (part)	Wm A. Sickler	176	Apr. 22, 1901				1902
S. " " "	W. H. Norway	—	July 31, 1875				1875
" " " resurvey & orig.	Louis Ross	276	Dec. 5, 1908	See Plat of T. 2N, R. 13W.			
Section Lines	"	"	"	2 00 00		Sept. 25, 1909	Oct. 10, 1909
Legal Subdivision Lines	"	"	"	2 77 35		"	"

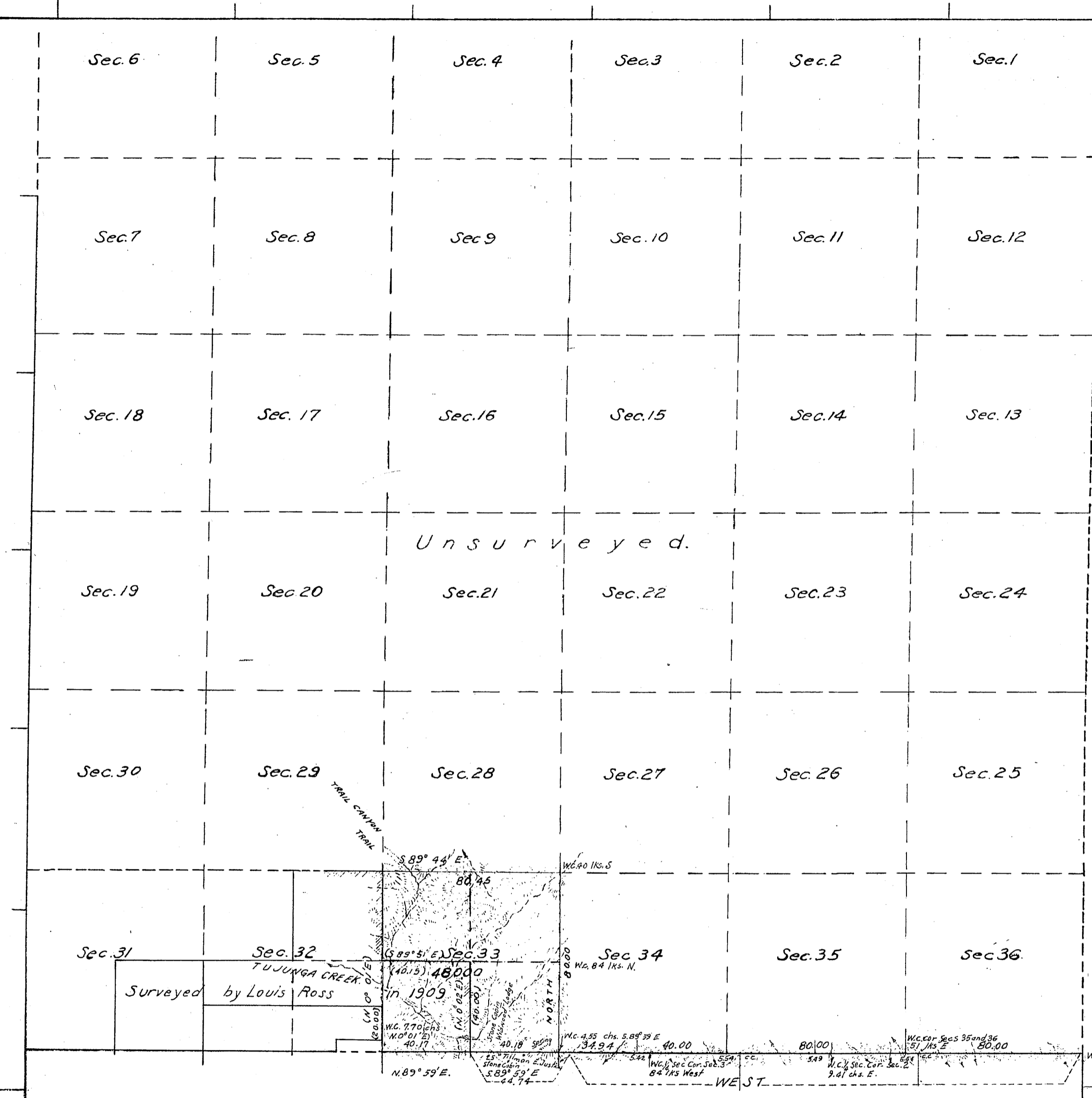
The above map of Township No. 3 North, Range No. 13 West of the San Bernardino Meridian, California, is strictly conformable to the field notes of the survey thereof on file in this office, which have been examined and approved.

U.S. Surveyor General's Office,
San Francisco, California.
August 11, 1911.

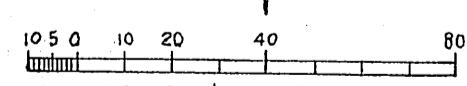
E. H. Archer
U. S. Surveyor General.
for California.

TOWNSHIP N° 3 NORTH, RANGE N° 13 WEST, SAN BERNARDINO MERIDIAN CALIFORNIA.

RECEIVED
U. S. LAND OFFICE
LOS ANGELES, CALIF.
Date DEC 18 1926
Hour 11:00 am



Lat. 34° 18' N } Near the 1/4 Sec. cor.
Long. 118° 14' 30" W } of Secs. 4 and 33



Area Surveyed, 480.00 Acres

LINES DESIGNATED	BY WHOM SURVEYED	NO	GROUP DATE	MILEAGE		WHEN SURVEYED	
				MLS.	CHS.	BEGUN	COMPLETED
Exterior	William E. Hiester, U.S. Surveyor.	138	June 10, 1924	2	0.45	July 14, 1925	July 15, 1925
Subdivisional							
Meander							
Miscellaneous							

Office of U.S. Supervisor of Surveys
Denver, Colorado, June 9, 1926
The above plat of Township No. 3 North Range No. 13 West
of the San Bernardino Meridian, California
is strictly conformable to the field notes of the survey
thereof which have been examined and approved.

W. H. Johnson
U.S. Supervisor of Surveys.

DEPARTMENT OF THE INTERIOR
GENERAL LAND OFFICE
Washington, D.C., October 26th 1926
The survey represented by this plat
having been correctly executed in accordance
with the requirements of law and the regulations
of this office, is hereby accepted.

J. C. Cannon
Acting Assistant Commissioner

Filed in U. S. Land Office,
Los Angeles, Cal.
FEB 23 1927
[Signature]
Register.