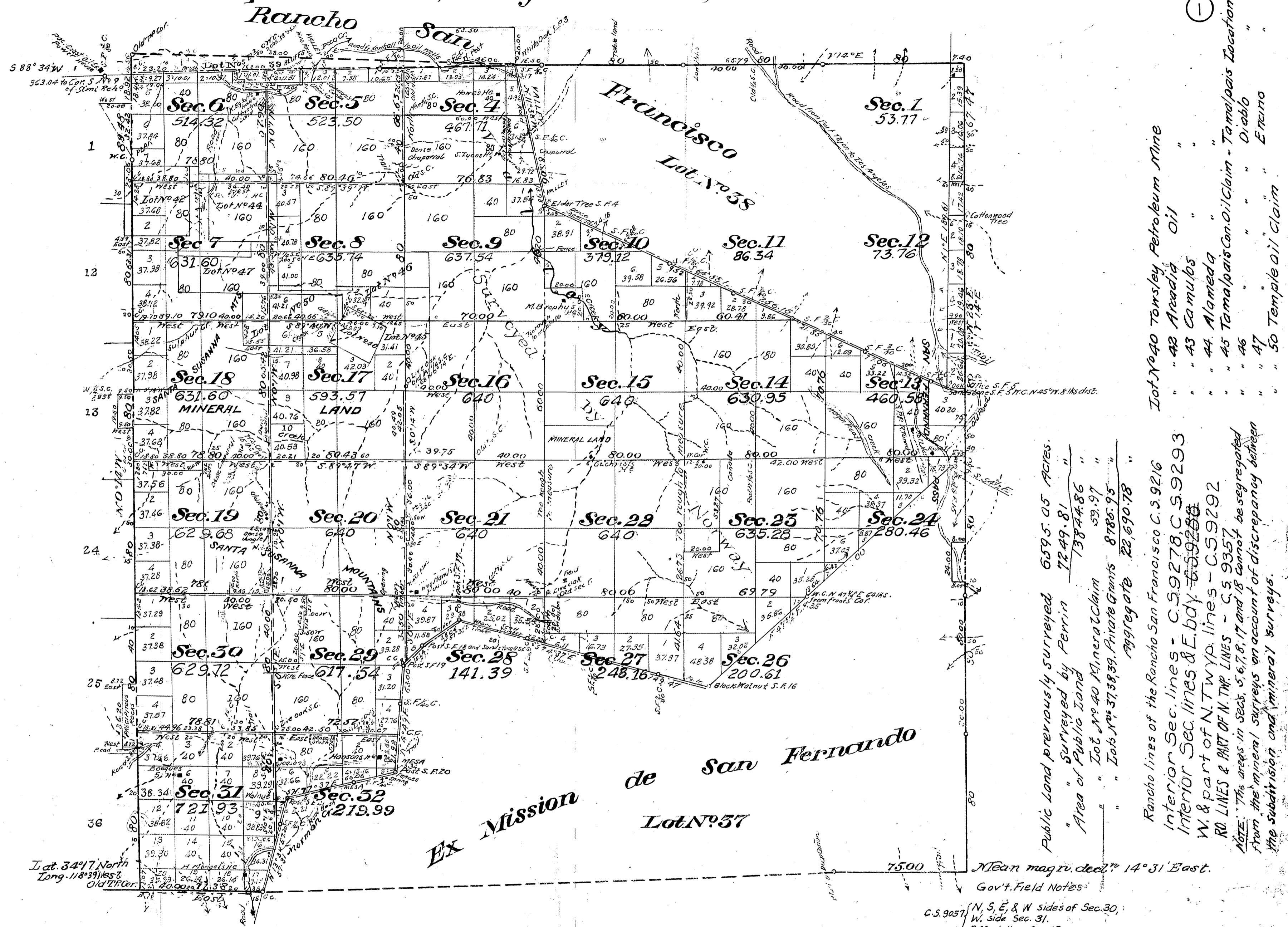


Township N<sup>o</sup> 3 North, Range N<sup>o</sup> 16 West, San Bernardino Meridian, California



Public Land previously surveyed 6595.05 Acres.  
 " Surveyed by Perrin 7249.81 "  
 " Area of Public Land 13844.86 "  
 " Lot No 40 Mineral Claim 53.97 "  
 " Lots Nos 37, 38, 39, Private Grants 8785.95 "  
 " Aggregate 22,690.78 "

Lot No 40 Towsley Petroleum Mine  
 " " 42 Arcadia Oil  
 " " 43 Camulbs  
 " " 44 Alameda  
 " " 45 Tamapais Con. Oil Claim - Tamapais Location  
 " " 46 " " Diablo  
 " " 47 " " Ereno  
 " " 50 Temple Oil Claim

Rancho lines of the Rancho San Francisco C. S. 9216  
 Interior Sec. lines - C. S. 9278, C. S. 9293  
 Interior Sec. lines & E. bdy. C. S. 9258  
 W. & part of N. Twp. lines - C. S. 9292  
 R. LINES & PART OF N. TWP. LINES - C. S. 9357  
 NOTE: The areas in Secs. 5, 6, 7, 8, 17 and 18 cannot be segregated from the mineral surveys on account of discrepancy between the subdivision and mineral surveys.

C. S. 9057 (N, S, E, & W sides of Sec. 30, W, side Sec. 31, Offset line Sec. 29)  
 C. S. 9019 Govt. Field Notes for Sec. 12, 13 + 24 and Rio San Francisco  
 Portion of Ra Twp. and Interior Sec. lines - C. S. 9357  
 Portion of Rancho Line and interior Sec. lines - C. S. 9360  
 Bdy. line of the San Gabriel National Forest - C. S. 9369  
 C. S. 9394 - Hancock's notes on bdy. Ex Mission de San Fernando  
 Section 7 - C. S. 9410

| Surveys Designated  | By whom surveyed | Contract No. | Date          | Amount of Surveys |      |      | When surveyed |
|---|------------------|--------------|---------------|-------------------|------|------|---------------|
|   |                  |              |               | Mls.              | Chs. | Lks. |               |
| Lines previously surveyed exhibited on Map approved March 8 <sup>th</sup> 1896. |                  |              |               |                   |      |      |               |
| Part of South bdy of TR   | J. R. Glover     | 382          | Nov. 20, 1884 |                   |      |      | 1895          |
| West boundary of TR resurveyed  | Geo. H. Perrin   | 136          | Aug. 22, 1896 | 6                 | 9    | 48   | 1896          |
| Ranch boundaries resurveyed   | "                | "            | "             | 11                | 61   | 56   | "             |
| Connecting lines  | "                | "            | "             |                   | 27   | 79   | Nov. 21, 1896 |
| Section lines new   | "                | 130          | May 25, 1896  | 18                | 52   | 71   | 1896          |
| " resurveyed  | "                | "            | "             |                   |      |      | "             |
| Connecting lines  | "                | "            | "             | 2                 | 45   | 38   | Nov. 25, 1896 |

T.3N., R.16W.

2 6

PLAT  
OF THE

WILEY PETROLEUM MINE,

Situated in

Los Angeles County, Cal.

CLAIMED BY

S. B. Caswell, et al.

Surveyed by

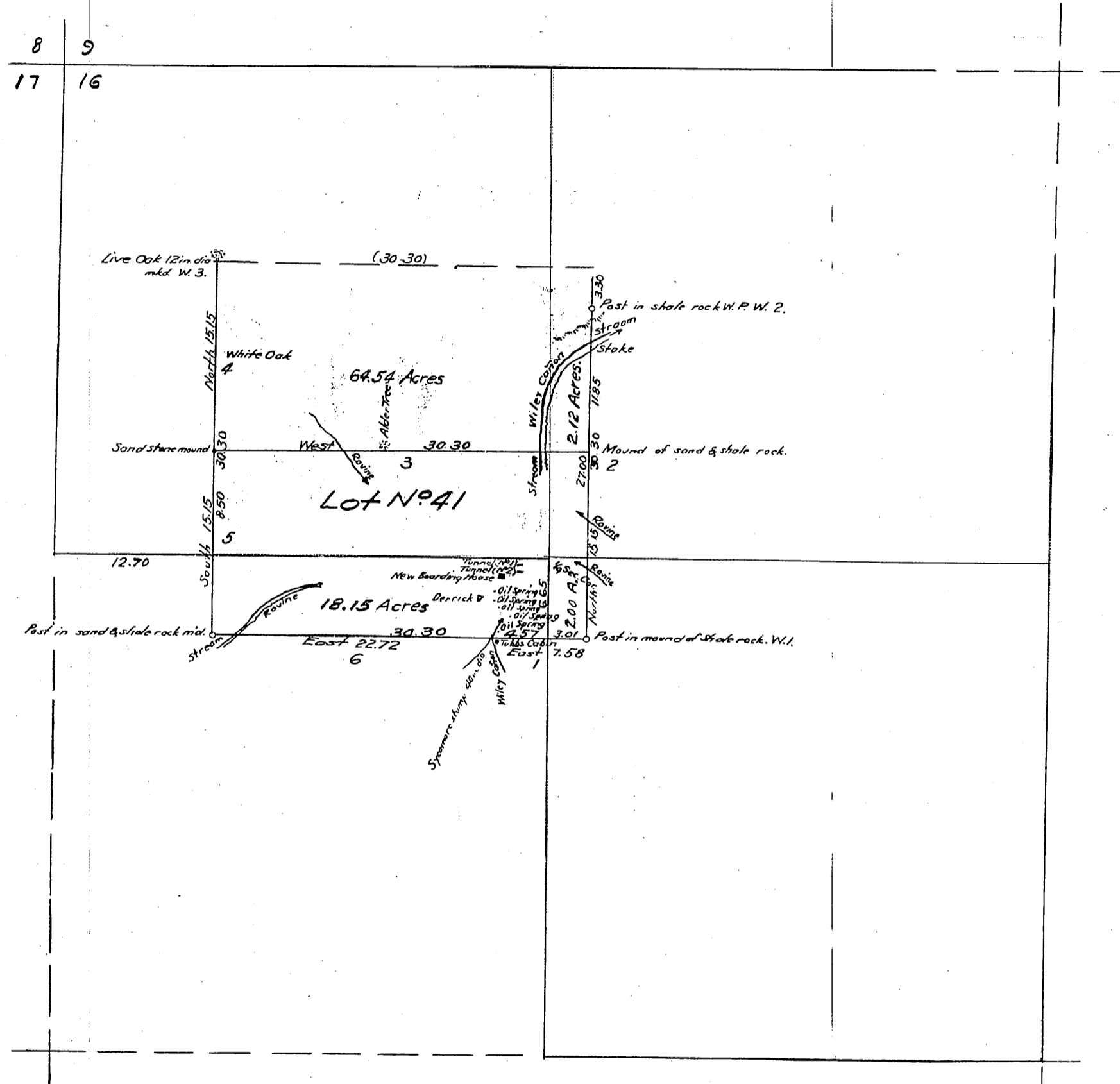
Albert G. Ruxton, Dep. Sur.

April, 1878.

Containing 91.81 Acres.

Scale 10 Chs. to 1 Inch.  
VAR. 14° 30' E.

T.3 N., R. 16 W.  
San Bernardino Meridian.



The original field notes of the survey of the "Wiley Petroleum" Oil Mine \_\_\_\_\_ from which this plat has been made, have been examined and approved and are on file in this office; and I hereby certify that they furnish such an accurate description of the said "Wiley Petroleum" Oil Mining Claim \_\_\_\_\_ as will, if incorporated into a patent, serve fully to identify the premises; and that such reference is made therein to natural objects and permanent monuments, as will perpetuate and fix the locus thereof.

I further certify, that the value of labor and improvements upon the said Mining Claim placed thereon by the applicants and grantor is not less than Two Thousand Dollars \_\_\_\_\_ and that said improvements consist of Tunnels, Roads, Sinking Wells \_\_\_\_\_ and I further certify, that this is a correct plat of the said "Wiley Petroleum" Oil Mining Claim \_\_\_\_\_ or premises made in conformity with said original field notes of survey thereof.

U. S. SURVEYOR-GENERAL'S OFFICE,  
San Francisco, California

June 26<sup>th</sup> 1878

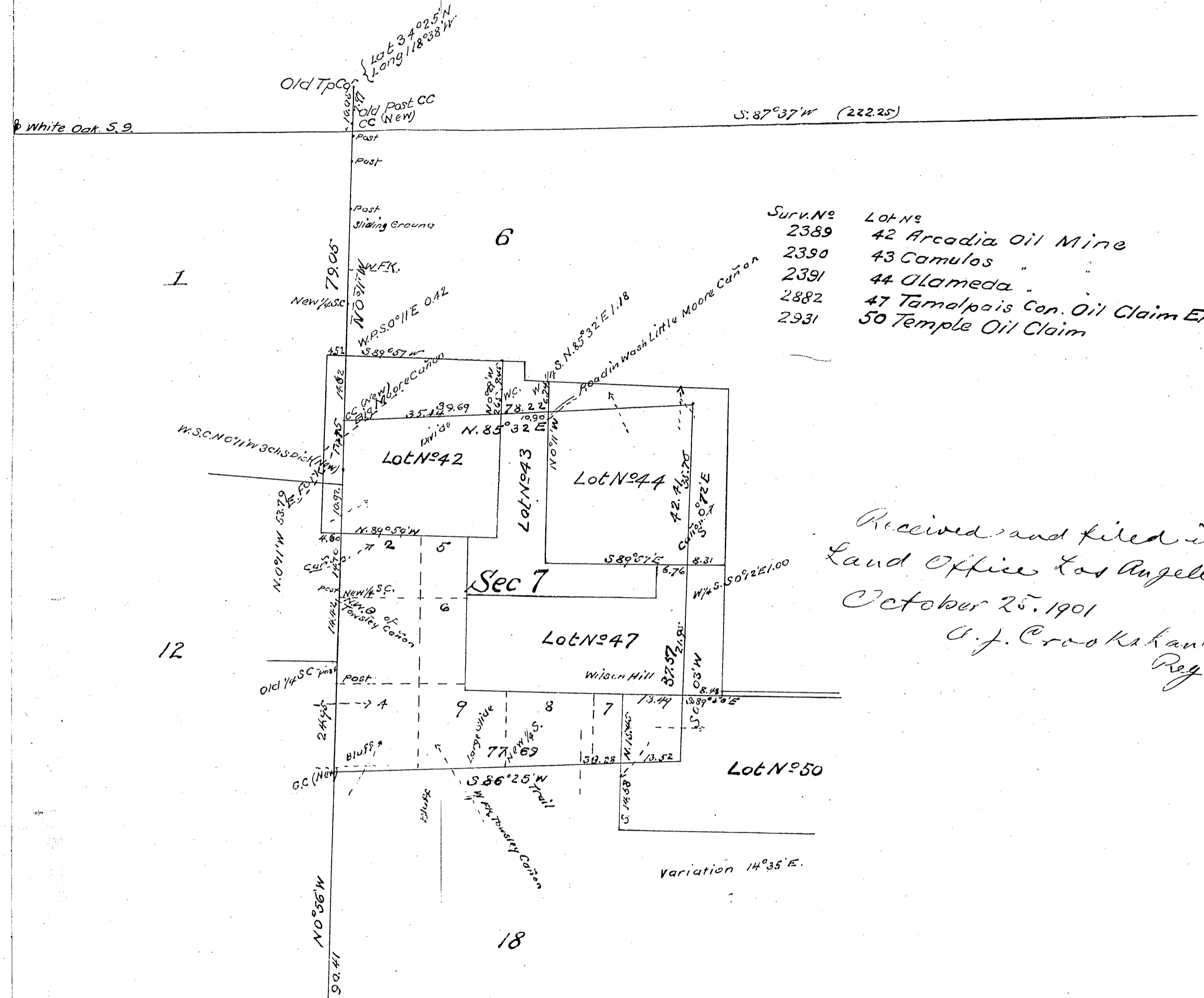
*Philo Wagner*

U. S. Surveyor General, California

TRACING BY: H.G. 7-7-24  
CHECKED BY: E.J.A. 9-3-24

T 3 N. R. 16 W. S. B. M

Rancho San Francisco Jacoba Feliz et al.



| Surv. No | Lot No                                      |
|----------|---|
| 2389     | 42 Arcadia Oil Mine                         |
| 2390     | 43 Camulos                                  |
| 2391     | 44 Alameda                                  |
| 2882     | 47 Tamalpais Con. Oil Claim Encino Location |
| 2931     | 50 Temple Oil Claim                         |

Received and filed in U. S.  
Land Office Los Angeles Cal  
October 25, 1901  
G. J. Crookhank  
Registrar.

The above Diagram of Section 7 of Township N. 3 North Range N. 16 West of San Bernardino Meridian, California, is strictly conformable to the field notes of Surveys made by Edward T Wright, U. S. Deputy Surveyor under Special Instructions dated October 28<sup>th</sup> 1899, which field notes are on file in this Office and have been examined and approved  
U. S. Surveyor General's Office  
San Francisco California  
November 8 1900

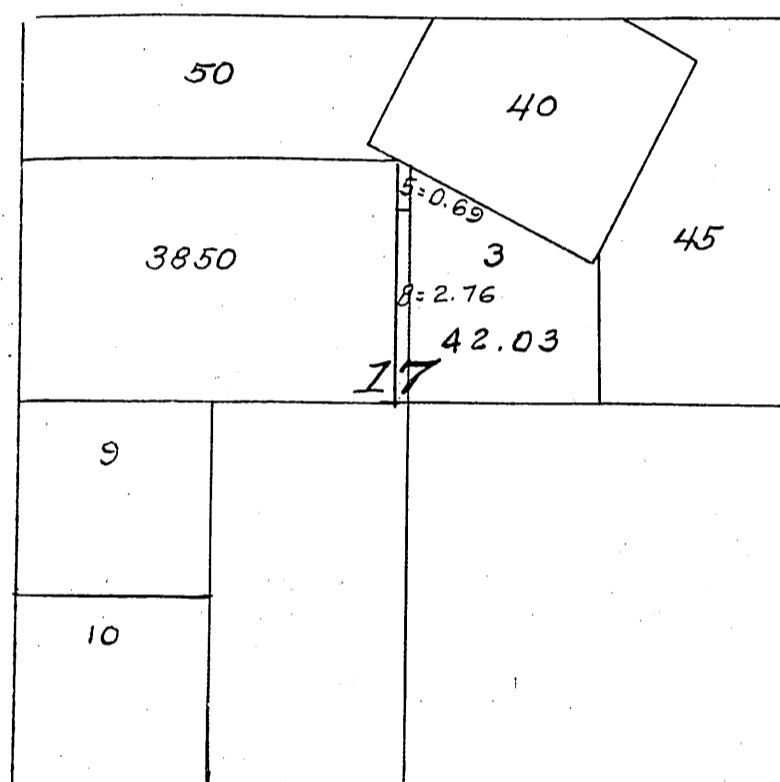
J. M. Leaver  
U. S. Sur. Genl. Cal.

Section 7 by E. T. Wright - C. S. 9410

1 inch = 20 Ch.

T 3 N  
R 16 W  
④

*T. 3 N. - R. 16 W. - S. B. M., California.*



- 715 40. Towsley Petroleum Mine
- 2882 45. Tamaipais Cons Oil Claim, Tamaipais Loc.
- 2931 50. Temple Oil Mine
- 3850 Sierra Madre Oil Placer claim

*Received and filed in  
U. S. Land office, Los Angeles  
Cal. August 12, 1901.  
A. J. Brookshaw,  
Register*

*The above diagram of Sec. 17 Township No. 3 North, Range No. 16 West, San Bernardino Meridian, California, is correctly constructed from official plats on file in this office  
U. S. Surveyor General's Office,  
San Francisco, California.  
August 9, 1901*

A. 104

*J. M. Leaves*  
U. S. Surv. Gen. Cal.

T. 3 N.-R. 16 W.-S. B. M., California.

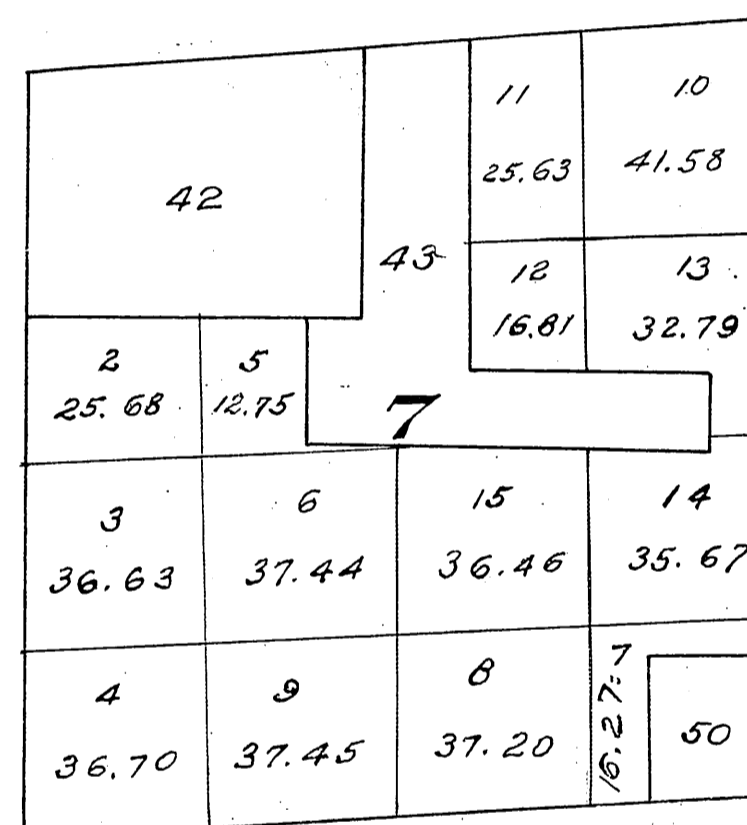
|            |            |            |           |    |  |
|------------|------------|------------|-----------|----|--|
| 42         |            | 43         |           | 44 |  |
| 2<br>25.68 | 5<br>13.28 | 7          |           |    |  |
| 3<br>36.63 | 6<br>19.40 | 47         |           |    |  |
| 4<br>36.70 | 9<br>36.13 | 8<br>32.30 | 7<br>9.61 | 50 |  |

- 2389 42 Arcadia Oil Mine
- 2390 43 Camulos " "
- 2391 44 Alameda " "
- 2882 47 Tamalpais Con. Oil Claim. Encino Loc.
- 2931 50 Temple Oil Claim

Received and filed in U. S.  
Land office Los Angeles, Cal.  
October 25, 1901.

*A. J. Cannonhand*  
Register.

*T.3N., R.16W.,  
San Bernardino Meridian, California.*



2389 42 Arcadia Oil Mine  
2390 43 Camulos ..  
2931 50 Temple . Claim

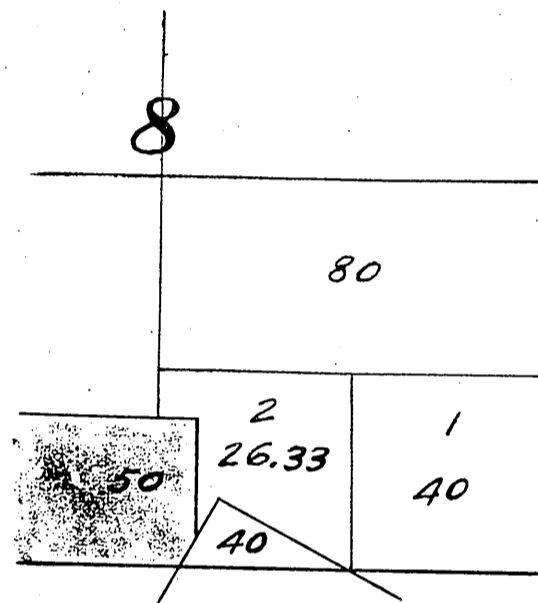
*The above diagram of Section 7, Township N°3 North, Range N°16 West,  
San Bernardino Meridian, California, is correctly constructed from  
official plats on file in this Office, and in accordance with directions  
contained in Department letter "N" dated December 4, 1901.  
U. S. Surveyor-General's Office,  
San Francisco, California.  
January 30, 1902*

*W. J. Graham  
U. S. Surveyor-General  
for California.*

*Filed Feb'y 3, 1902.  
R. D. [Signature]  
Register*



T. 3 N., R. 16 W. San Bernardino Meridian, California.



715 40 Towsley Petroleum Mine  
2931 50 Temple Oil Mine

Filed in U. S. Land  
office Los Angeles,  
Cal. June 18, 1902.  
A. J. Roush  
Register.

The above diagram of the SE 1/4 of Section 8, Township N<sup>o</sup> 3 North, Range N<sup>o</sup> 16 West, San Bernardino Meridian, California, correctly shows the conflict with Mineral Lots 40 and 50 and the resultant agricultural lottings, and is constructed in accordance with directions contained in Department letter "N", dated June 7, 1902. U. S. Surveyor-General's Office, San Francisco, California, June 16, 1902.

W. S. Graham  
U. S. Surveyor General  
for California.

