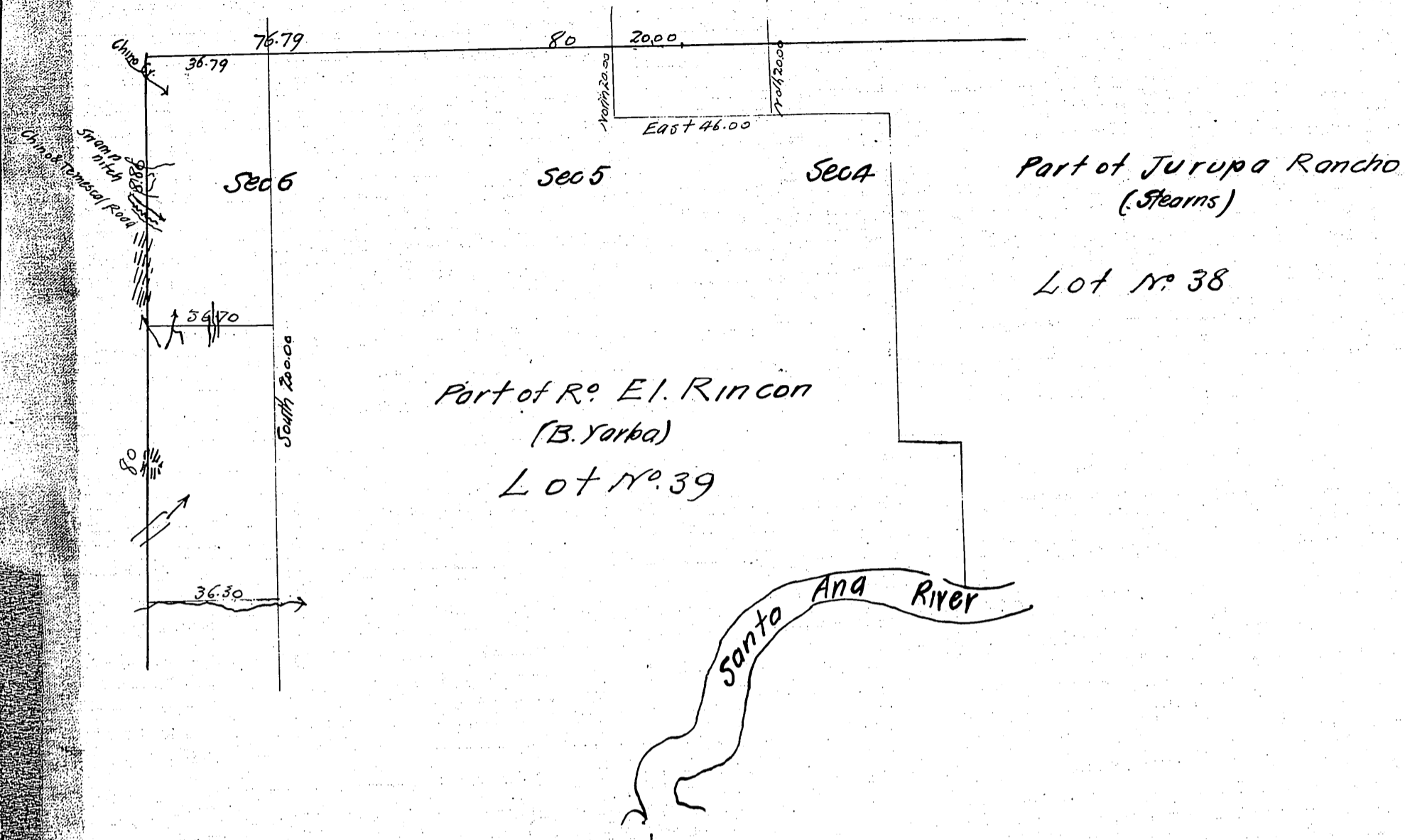


Township No 3 South

Range No 7 West

S. B. M.



- T 35. R 8 W ~ Port of S. E. & W. bdy's ~ C. 5. 9321
- T 35. R 8 W ~ Portion of interior sec lines C. 5. 9337
- T 35. R 9 W interior lines ~ C. 5. 9331
- T 35. R 10 W ~ portion of N. bdy. C. 5. 9348
- T 35. R 11 W ~ E. & S. bdy ~ C. 5. 9348
- T 35. R 12 W ~ S. bdy. C. 5. 9349

Bind preceding
T.3S-R.7W①

T.3S, R.14W.
T.3S, R.15W.

T.4S, R.11W.
T.4S, R.12W.
T.4S, R.13W.
T.4S, R.14W.
T.4S, R.15W.

T.5S, R.11W.
T.5S, R.12W.
T.
T.5S, R.14W.
T.5S, R.15W.

Govt. Field Notes.

C.S.9076 { S. Bdy. T.4S, R.14W. and T.4S, R.15W.
W. " " " (partly on offset 1 mi. E.) one
W. " T.5S, R.14W.

E and S. bdy T.3S, R.10W. - C.S. 9333

Twps 3 and 4 N. R.18W. - Portion of Twp. R. and interior section lines - C.S. 9357