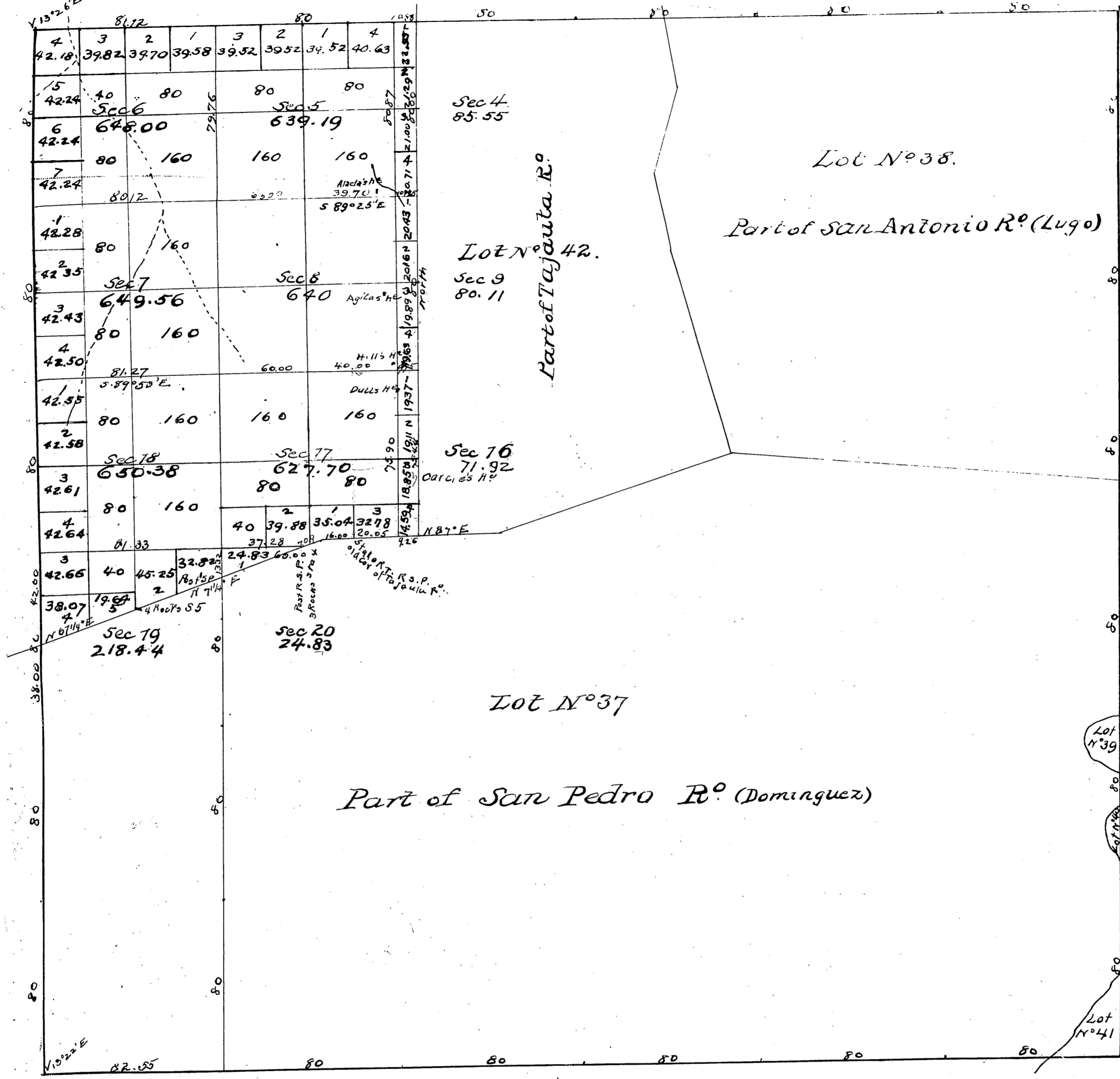


Aggregate Area of Public Land 3624.69 Acres
 Estimated Area of Private Grants 19503.39 "
 Aggregate 23128.08 "

Variation used by Hansen 1/4° E.

| Surveys Designated | By whom surveyed | Date of Contract | Amount of Surveys | When surveyed |
|-------------------------|------------------|----------------------------------|--------------------|----------------------------|
| Township lines | Henry Hancock | July 5 th 1853 | | 1853 |
| Boundaries of Lot No 37 | | (Inst) Dec 11 th 1857 | | 1857 |
| " 38 | | " Sept 1 st 1858 | | 1858 |
| " 39 | | " June 30 th 1866 | | 1866 |
| " 40 | | | | 1866 |
| " 41 | | | | 1866 |
| Tajauta R. | George Hansen | Feb. 18 th 1868 | | 1868 |
| Section lines | | Feb. 7 th 1868 | 8 mls 14 chs 01 ms | Feb. 28 th 1868 |

Field Notes bet Secs 6-7, M 27-187
 Field Notes of Secs 4, 5, 8, 17-C, 5, 9, 32, 22
 Interior Sec. lines C 5, 9, 32, 22 & C 5, 9, 32, 25
 E, W and S. bay. C 5, 9, 34, 9
 For Govt. Field Notes - Boundary
 of R. Las Cerritos, see C. 5, 9, 430



Public Land surveyed by Hansen 3624.69 Acres
 Goldsworthy 710.99
 Aggregate Area of Public Land 4335.68 Acres
 Estimated Private Grants 18,792.40
 Aggregate 23,128.08

Variation reported by Hansen 140 E
 Goldsworthy 140 5/8 E

| Surveys Designated | By whom surveyed | Date of Contract | Amt of Surveys | When surveyed |
|--|------------------|----------------------------------|----------------------|---------------------------|
| Township lines | H. Hall sec K | July 5 th 1853 | | 1853 |
| Boundaries of Lot N 37 | | (Inst) Dec 11 th 1857 | | 1857 |
| 38 | | Sept 12 th 1858 | | 1858 |
| 39, 40 & 41 | | June 30 th 1866 | | 1866 |
| 42 | | | | |
| Section lines not colored & those colored blue | G. Hansen | February 7 th 1868 | | 1868 |
| Township lines colored red | J. Goldsworthy | Nov. 4 th 1873 | 0 m 3 100 4 88 1 K 5 | 1873 |
| Boundary of Lot N 42 colored red | | | 2 " 76. 34. | 1873 |
| 37 | | | 0 " 29. 31. | 1873 |
| Section lines colored red | | | 4 " 16. 50. | Nov. 4 th 1873 |

F.D.
 For Govt Field Notes ~ Boundary of R^o Tajauta see C.S. 9429
 For Govt. Field Notes ~ Boundary of R^o Los Cerritos, see C.S. 9430