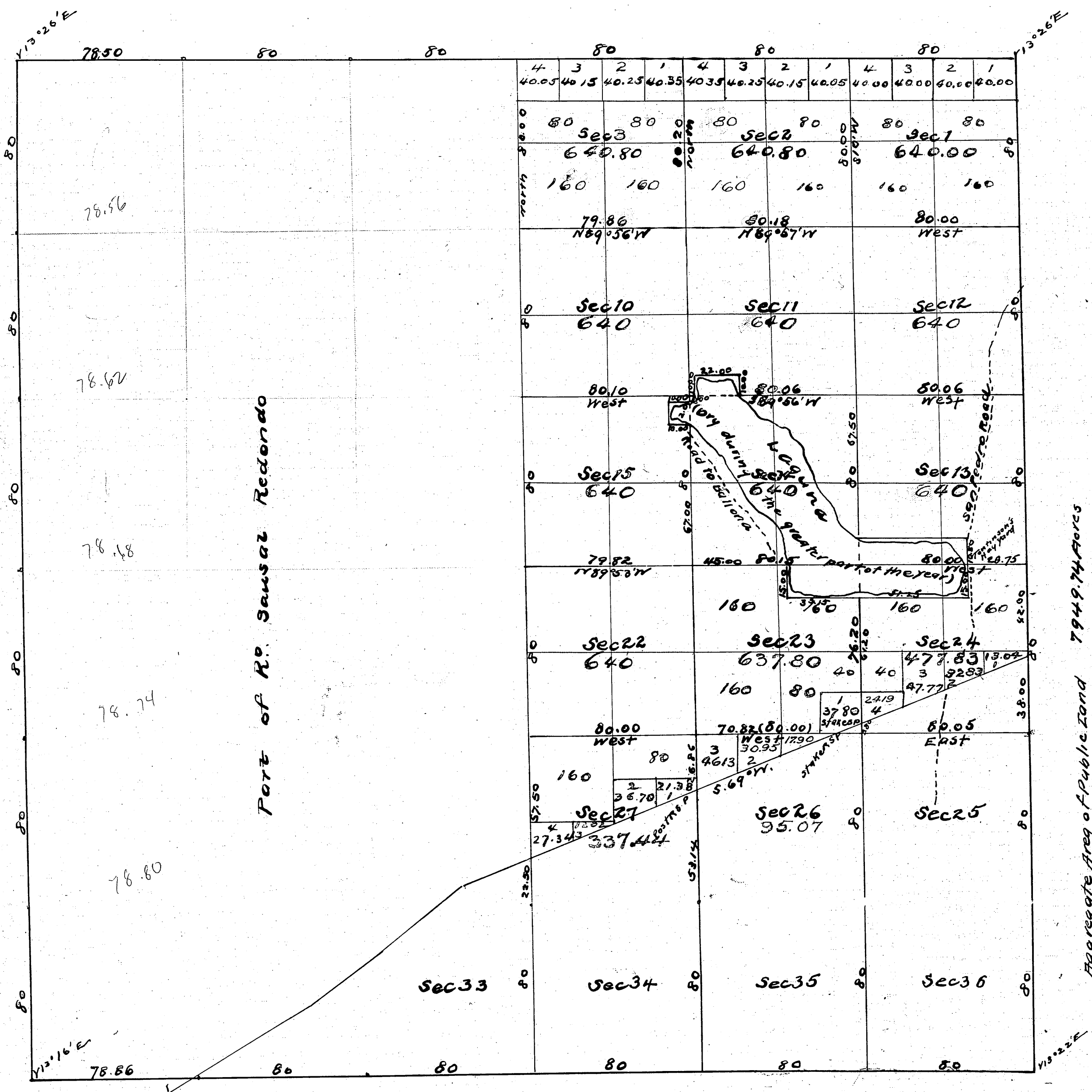


Public Land Survey by Hanson 6621.69 Acres  
 Subsequently 710.99  
 Aggregate Area of Public Land 4335.68 Acres  
 Estimated Private Grants 18793.40  
 Aggregate 23125.08

to Report  
 9 orders by 12.5'E



Aggregate Area of Public Land 7949.74 Acres  
 Estimated Area of Private Grants 15228.34  
 Aggregate 22978.08

W & S. bdy. ~ 66.9326  
 Part of Interior Sec. lines & part of E. bdy of 9340

Surveys designated	By whom surveyed	Date of Contract	Amount of Surveys	When surveyed
Township lines	Henry Hancock	July 5 <sup>th</sup> 1853		1853
Boundaries of Lot No 37	"	(Inst) Dec 11 <sup>th</sup> 1857		1857
R. Sausar Redondo	Located by George Hanson under Instructions from Surr. Gen.			1868
Section lines	George Hanson	Feb. 7 <sup>th</sup> 1868	23 mls 71 chs 81 lks	Feb. 26 <sup>th</sup> 1868

Field Notes for Secs. 14-15-22-23-26-27 Sec. No. 2744916 153