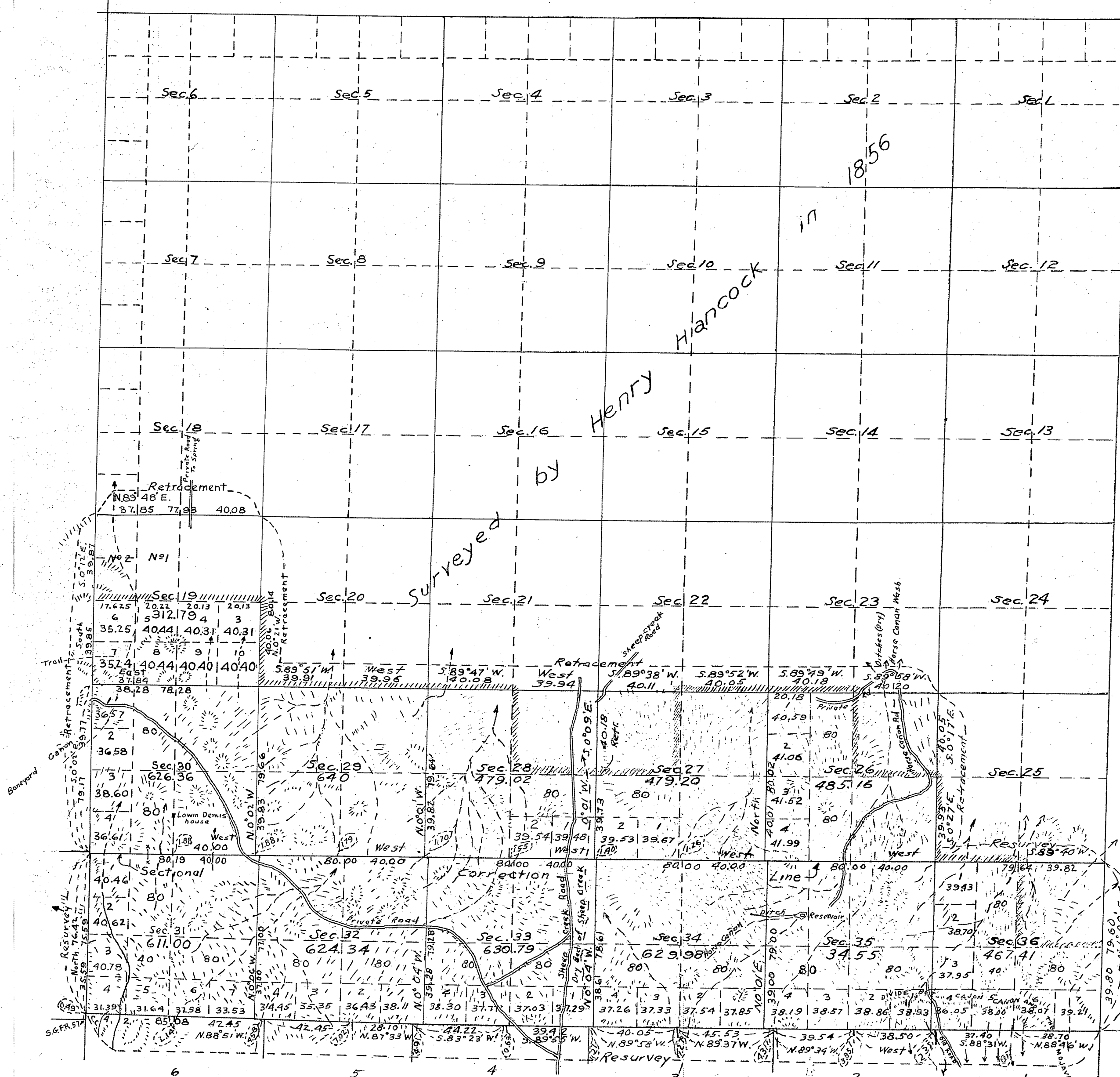


TOWNSHIP N°4 NORTH, RANGE N°7 WEST SAN BERNARDINO MERIDIAN CALIFORNIA

RECEIVED  
U.S. LAND OFFICE  
LOS ANGELES, CAL.

Date Aug 27-1920  
Hour 9am

See old plat for land in Forest Reserve restoration thereof



Area  
Resurveyed 950.28 Acs  
New 6620.60  
Filed in U.S. Land Office  
Los Angeles, Cal.  
OCT 13, 1920  
B. B. Moore  
Register

Areas in Acres	
Public Land previously surveyed	16,235.69
Public Land surveyed under current instructions	6,620.60
Indian Allotments	
Mineral Claims	
Water Surface	
<b>Total Area</b>	<b>22,856.29</b>

Latitude 34° 23' N  
Longitude 117° 34' W

Scale 40 Chains to an inch  
Magnetic Declination 16° 30' E  
near Cor. of Secs. 34 & 35 on S. side of Tp.

Surveys Designated	By Whom Surveyed	Group		Amount of Surveys		When Surveyed	
		No	Date	Mis. chs.	lks.	Begun	Completed
Lines previously surveyed exhibited on plot approved July 25, 1856							
E. by of T. 4 N, R. 7 W, retr. & res.	John R. English	49	Nov. 17, 1917	see plot of T. 4 N, R. 7 W		Mar. 16, 1918	Mar. 22, 1918
N. T. 3/4, R. 7 W, res.	U.S. Transitman	"	"	5	78 99	Feb 25, "	" 28 "
E. To. res.	"	"	"		79 60	" 27 "	Feb 27 "
Subdivisions retr. & res	"	"	"	8	38 20	" 23 "	Mar 22 "
"	"	"	"	14	30 89	" " "	" 25 "
Connections	"	"	"	13	40	" 28 "	" 29 "

The above map of Township No 4 North, Range No 7 West, of the San Bernardino Meridian, California, is strictly conformable to the field notes of the survey, filed in this office which have been examined and approved

U.S. Surveyor General's Office,  
San Francisco, California  
September 8, 1919

Louis H. Moore  
U.S. Surveyor General  
for California

