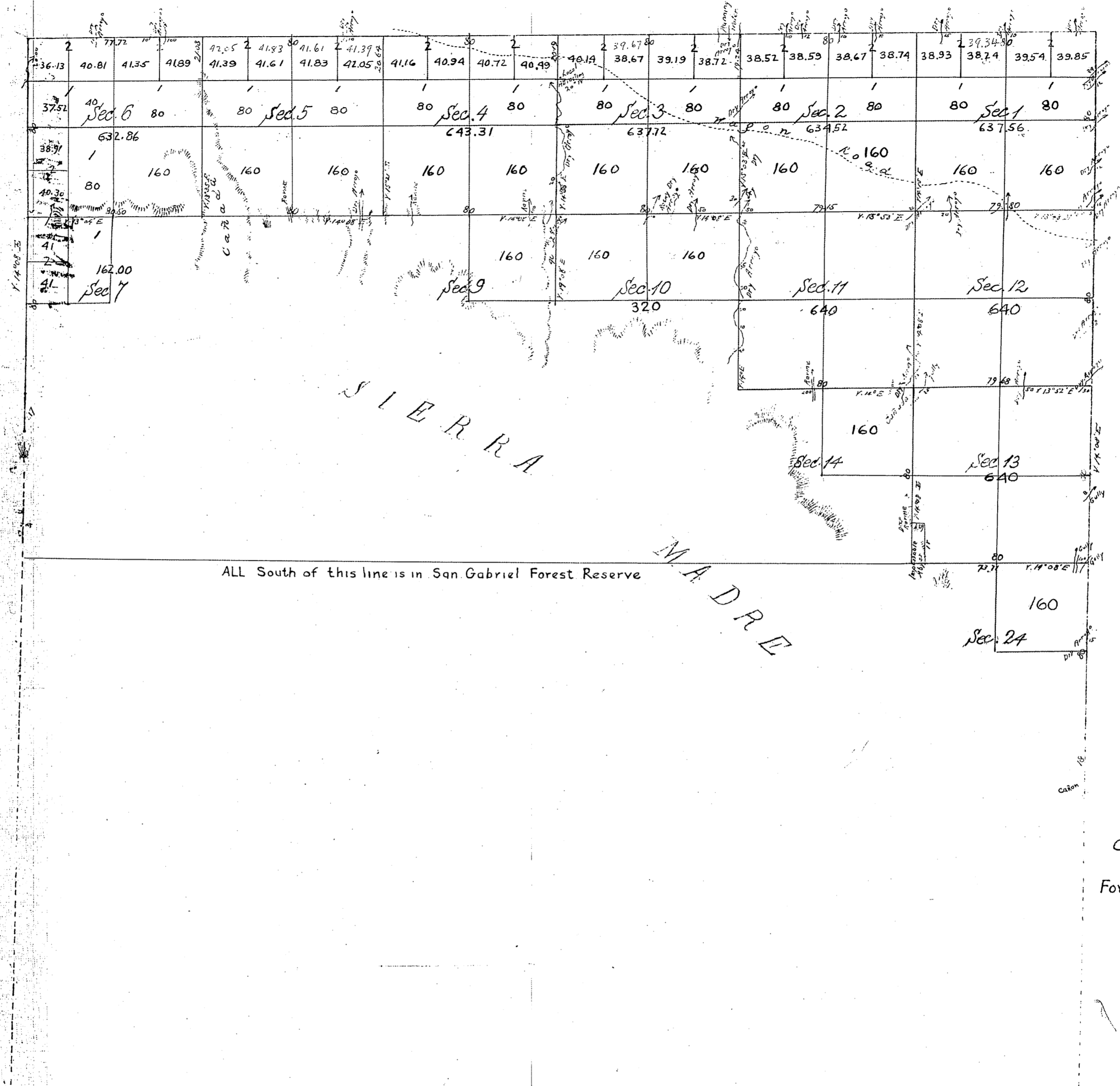


Township No IV North, Range No VIII West of the San Bernardino Meridian.

T.4 N.
R.8 W.
②



For field notes Sections
1,2,3,4,5,6, See C.S. 7854
Gov. Field notes east bdy Twp. C.S. 9029

C.S. 9074 - S.B. of Twp.

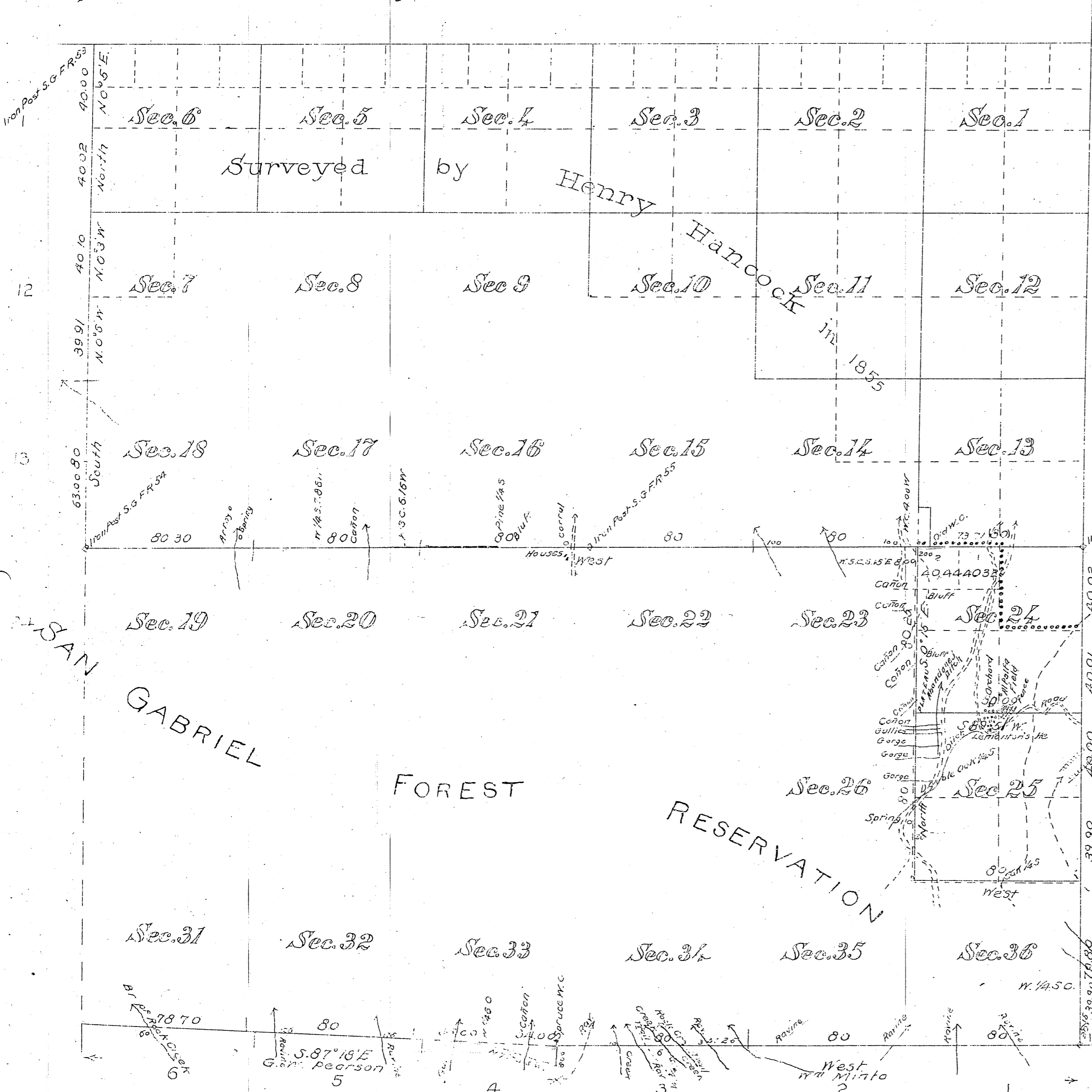
For field notes on west boundry &
interior section lines See C.S. 9161

Aggregate Area of Public Lands surveyed 6777.85 Acres
Estimated " " unsurveyed 16325.18
Aggregate 23070.00

Survey designated	By whom Surveyed	Date of Contract	Amount of Survey Miles Chas. Links	When Surveyed
Township lines	Henry Hinckock	February 15 th 1855	12 32 72	1855
Section "	" "	" " "	17 39 57	"

John C. Mays
U.S. Surv. Genl
Mar 19th 1856

Township N^o 4 North, Range N^o 8 West, San Bernardino Meridian, California.



Area of Public Land previously surveyed	6,714.85 Acres
" " " " Surveyed by Sickler	1,170.76 "
Total Area of Public Land Surveyed	7,885.61 Acres
Estimated Area of Unsurveyed Land	15,077.00 "
Aggregate	22,962.61 "

The line of demarcation between the areas previously counted in total acreage surveyed and the new surveys, is indicated thus

Received March 6/05
To be filed April 6/05

Gov. Field notes East boundary Twp C.S. No 9029
" " " " South " " " " C.S. " 9074
San Gabriel Forest Res Bdy. by Cutting - C.S. 9400

Latitude 34° 25' N.
Longitude 117° 40' W.
Magn. Decln. 15° 08' East

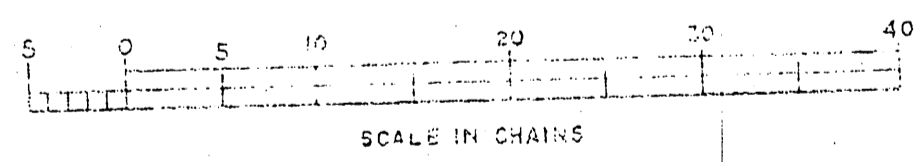
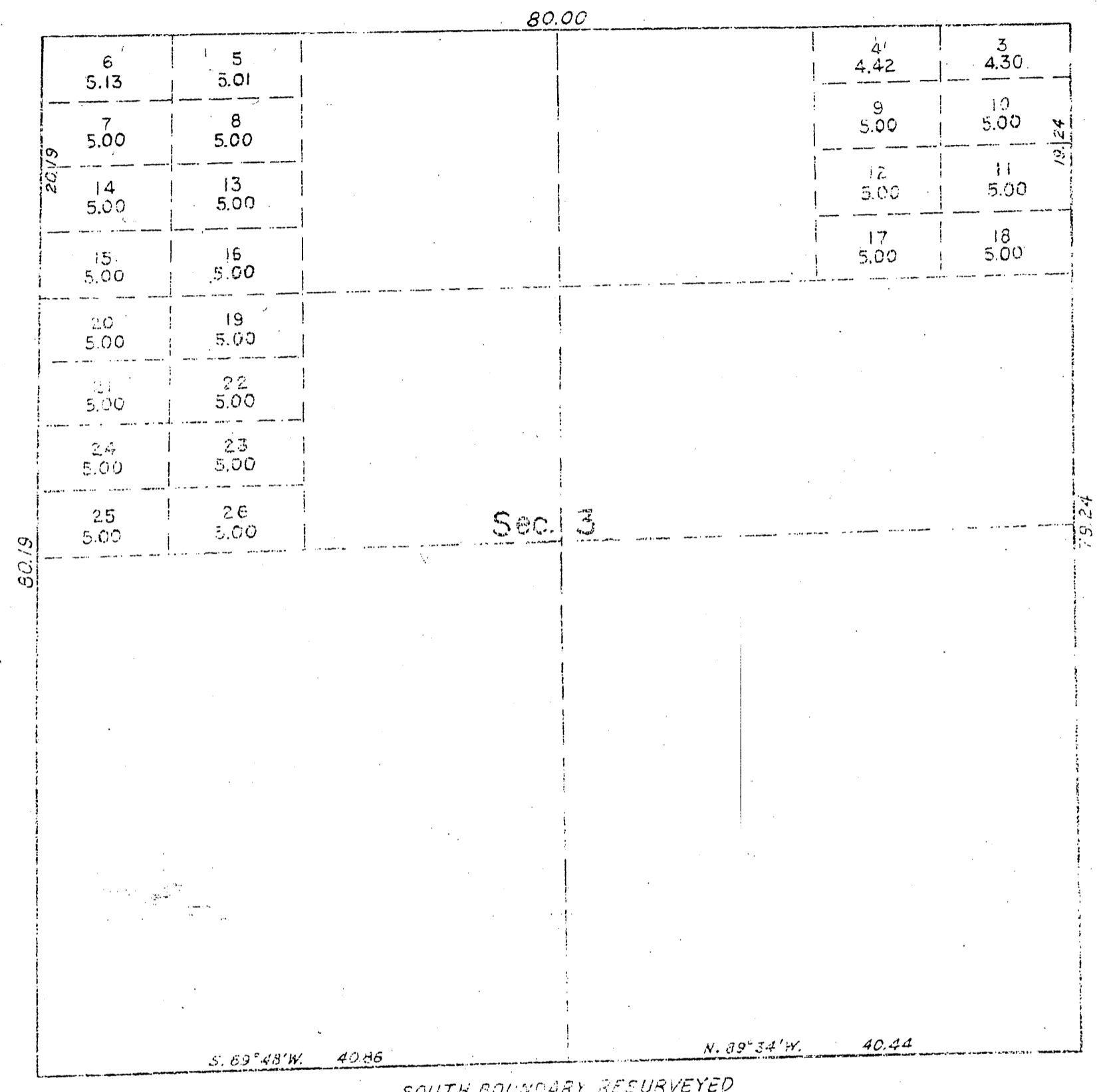
Surveys Designated	By whom Surveyed	Cont. Rec. No.	Date	Acres	Chs	LS	When Surveyed
Lines previously surveyed, exhibited on Map approved March 19 th 1856							
Part of South Boundary of Township	W. Minto		May 26, 1852				1852
" " East	"		"				"
" " South	F. W. Pearson		Dec. 10, 1883				1884
Bdries of San Gabriel Forest Reservation	L. H. Cutting	126	Feb. 9, 1895				1896
Section Lines, New	William A. Sickler	Inst.	March 19, 1904	4	00	34	June 17, 1904

The above Map of Township N^o 4 North, Range N^o 8 West San Bernardino Meridian, California, is strictly conformable to the field notes of the surveys thereof on file in this Office, which have been examined and approved
U. S. Surveyor-General's Office
San Francisco, California
September 3rd 1904

W. S. Graham
U. S. Surveyor-General for California.

TOWNSHIP 4 NORTH, RANGE 8 WEST, SAN BERNARDINO MERIDIAN, CALIFORNIA

SUPPLEMENTAL PLAT OF SECTION 3



UNITED STATES DEPARTMENT OF THE INTERIOR
BUREAU OF LAND MANAGEMENT
Washington, D.C. December 28, 1948

This plat, showing amended lottings, is based upon the official records and, having been correctly prepared in accordance with the regulations, is hereby accepted.

For the Director
William F. Williams
Chief, Branch of Surveys