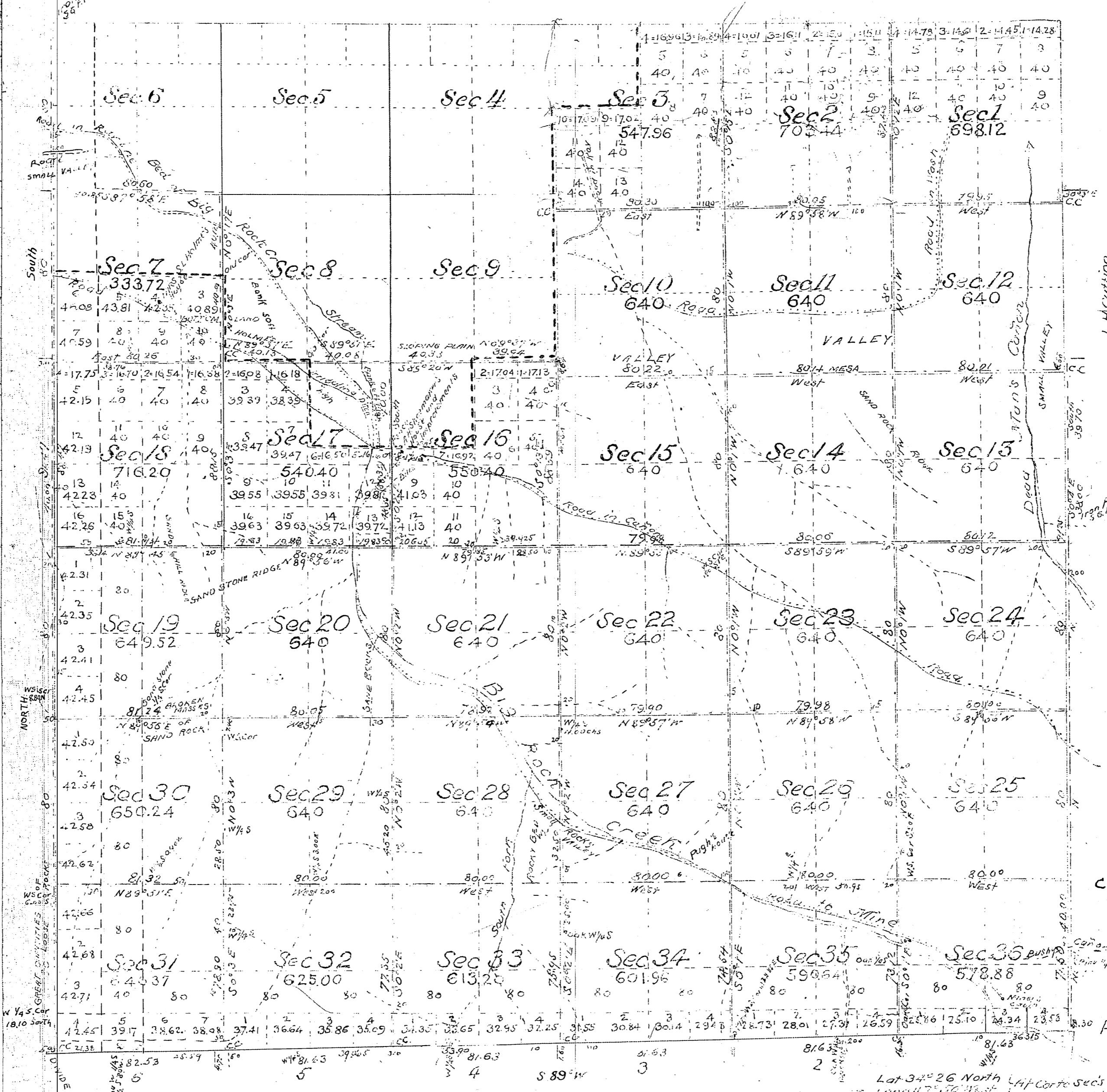


Twp N^o 4 North, Range N^o 9 West, San Bernardino M. Cal.

T4N
R9W
①



Public Land previously surveyed
by L. F. H. E.
Aggregate Area of Public Land surveyed 23,307.59 Acres

The line of demarcation between the areas previously counted in total acreage surveyed and the new surveys is indicated thus - - - - -

North bdy. and por. of East bdy.
by Cutting - C.S. 9400
For field notes: Sections
1, 2, 3, 4, 5, 6 See C.S. 9020
(S.B. of Twp.
C.S. 9075 E.B. Secs. 7, 8, 9, 17
(S.B. " " 8, 9
See C.S. B-2617 for sec lines in N^o 2
For Field Notes On Interior Sections &
East & West Boundaries Of Township
see C.S. 9159
Part of E. & W. bdy. C.S. 9245

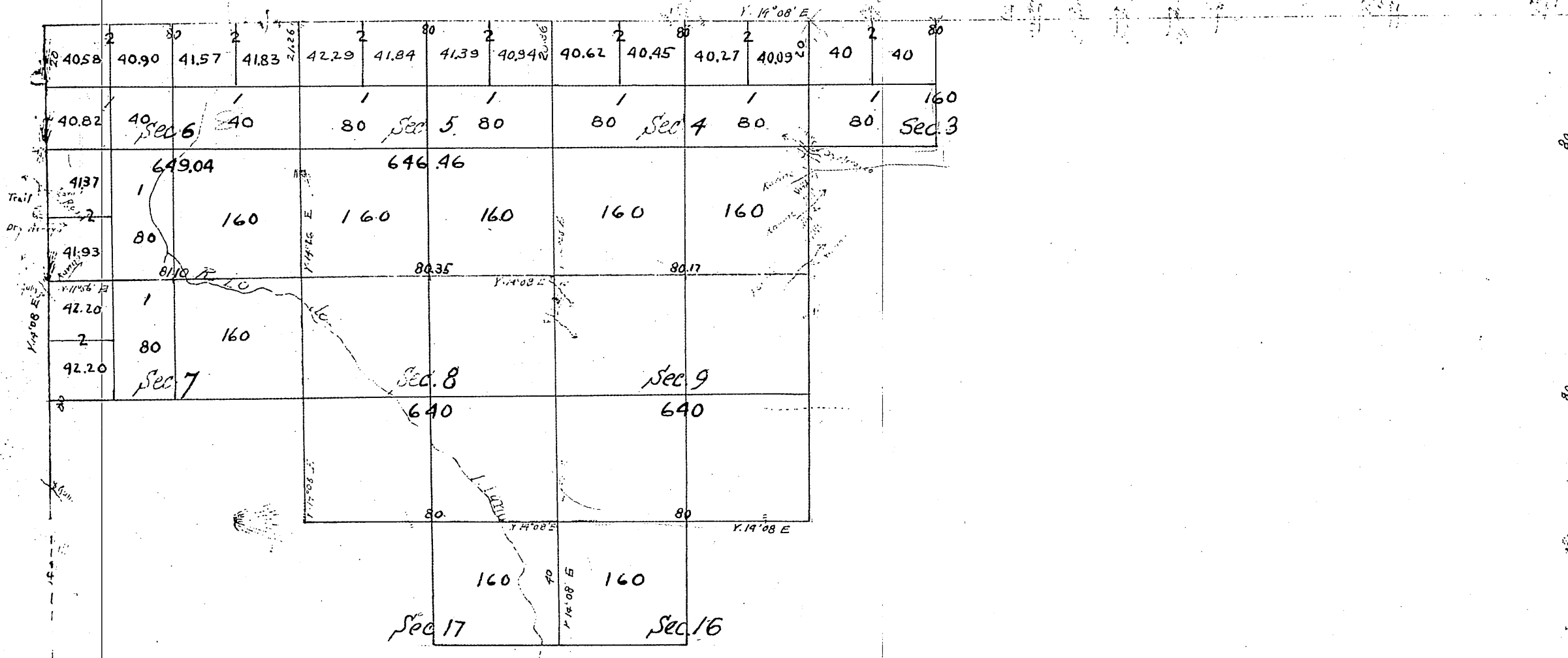
Surveys Designated	By Whom Surveyed	Comm. Date	Amount Surveyed	Area	Area	Area
Lines previously surveyed exhibited on Map approved March 19 th 1876						
North Boundary of T. 3 N. R. 9 W	W. H. Norway	July 31, 1876				1875
North Bdy of 1/4 of East Bdy of Twp.	L. H. Cutting	126 Feb. 4, 1896				1896
North Bdy of T. 3 N. R. 9 W. Re-Surveyed	Legrand Friel	155 Feb. 10, 1900	6	10	68	1900
Part of West & East Bdy of Twp. Re-Surveyed			2	77	70	"
" " " " " " " " " " " "			7	12	19	"
" " " " " " " " " " " "			4	41	28	"
Section lines Re-Surveyed			48	65	40	"
Connecting lines				55	96	July 19, 1900

Lat 34° 26' North Lat. Cor. sec's 8, 9, 16, 17
Long 117° 56' West
Main Mer. the distance 110° 58' East
The above Map of Township N^o 4 North Range N^o 9 West, San Bernardino Meridian, California, is strictly conformable to the field notes of the survey, merged on file in this office, which have been examined and approved by the U.S. Surveyor General's Office, San Francisco, California, June 25, 1901.
J. M. Groves
U.S. Surveyor General,
for California
I hereby certify the above to be a full, true and correct copy of the original plat of Township N^o 4 North Range N^o 9 West, San Bernardino Meridian, California, approved June 25, 1901 and on file in this office.
U.S. Surveyor General's Office
San Francisco, California
February 6, 1902
W. S. Graham

Township N^o IV North, Range N^o IX West of the San Bernardino Meridian

T4N
R9W
②

Gov't. Field Notes
C.S. 9075 { E.B. Secs. 7, 8, 9, 17; S.B. Secs. 8, 9
S.B. of Twp.



All This Twp. in San Gabriel Forest Reserve
See C.S. B-2617 for Sec. Lines & Corners of N^o 1/2 T. 4N-R. 9W

Surveys designated	By whom Surveyed	Date of Contract	Amount of Survey Miles Chains Units	When Surveyed
Township lines	Henry Hancock	February 15 1855	10 17 00	1855
Section "	"	"	11 43 24	"

Aggregate Area of Public Lands Surveyed	40 21 34 acres
Estimated " " Mountain " Unsurveyed	190 18 66 "
Aggregate	230 40 00 "

John C. Hays
U.S. Surv. Genl. Cal.
Mar. 13 1856

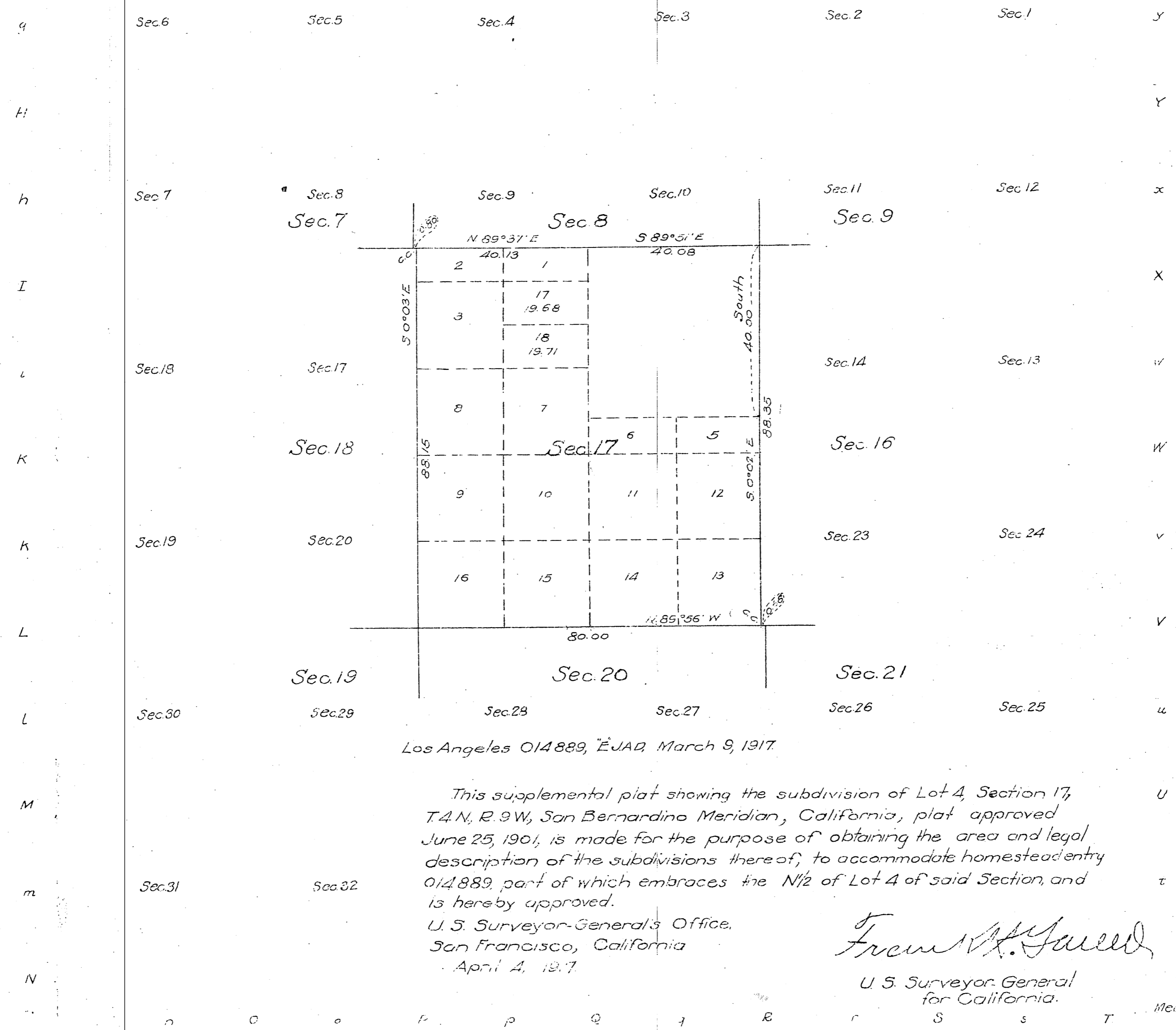
T4N
R9W
③

(4-6-18°)

Supplemental Plat of Section 17,
Township No 4 North, Range No 9 West, San Bernardino Meridian, California

Scale 20 chains = 1 inch.

Received
U.S. Land Office
Los Angeles Cal.
Date: April 23-1917
Hour: 9:20 A.M.



Los Angeles 014889, EJAD, March 9, 1917.

This supplemental plat showing the subdivision of Lot 4, Section 17, T.4N, R.9W, San Bernardino Meridian, California, plat approved June 25, 1901, is made for the purpose of obtaining the area and legal description of the subdivisions thereof, to accommodate homestead entry 014889, part of which embraces the N 1/2 of Lot 4 of said Section, and is hereby approved.

U.S. Surveyor-General's Office,
San Francisco, California
April 4, 1917.

Frederick A. Gould
U.S. Surveyor-General
for California.

Areas in Acres.	
Public Land	
Indian Reservation	
Indian Allotments	
Mineral Claims	
Water Surface	
Total Area	

Scale 40 Chains to an inch
Mean Magnetic Declination

Surveys Designated	By Whom Surveyed	Contract		Amount of Survey		When Surveyed	
		No.	Date	Mts.	acs.	By Whom	Completed

The above map of Township No _____ Range No _____ of the _____ Meridian is strictly conformable to the field notes of the survey thereof on file in this office which has been examined and approved.
U.S. Surveyor General's Office

Surveyor General