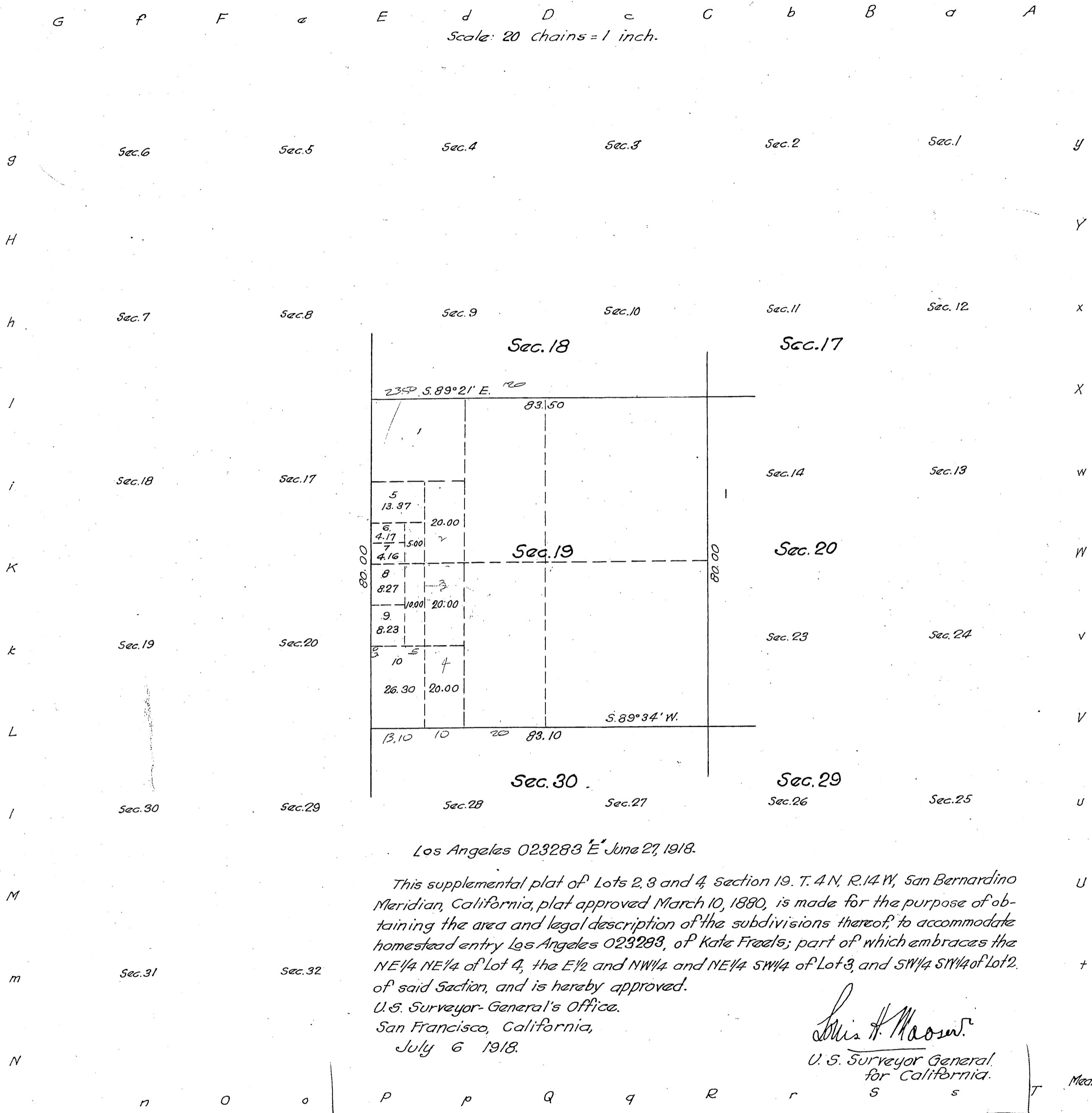


(4-0154)

Supplemental Plat of Section 19
Township N^o 4 North,
Range N^o 14 West, San Bernardino Meridian, California.
Scale: 20 chains = 1 inch.



Received
U. S. Land Office
Los Angeles, Cal.
Date Sept. 9. 1918
Hour 9 AM
B. P. Groves
Register.

Los Angeles 023283 E June 27, 1918.

This supplemental plat of Lots 2, 3 and 4, section 19, T. 4 N, R. 14 W, San Bernardino Meridian, California, plat approved March 10, 1880, is made for the purpose of obtaining the area and legal description of the subdivisions thereof, to accommodate homestead entry Los Angeles 023283, of Kate Fraals; part of which embraces the NE 1/4 NE 1/4 of Lot 4, the E 1/2 and NW 1/4 and NE 1/4 SW 1/4 of Lot 3, and SW 1/4 SW 1/4 of Lot 2. of said Section, and is hereby approved.
U. S. Surveyor-General's Office.
San Francisco, California,
July 6 1918.

Louis H. Mason
U. S. Surveyor General
for California.

Areas in Acres	
Public Land	
Indian Reservation	
Indian Allotments	
Mineral Claims	
Water Surface	
Total Area	

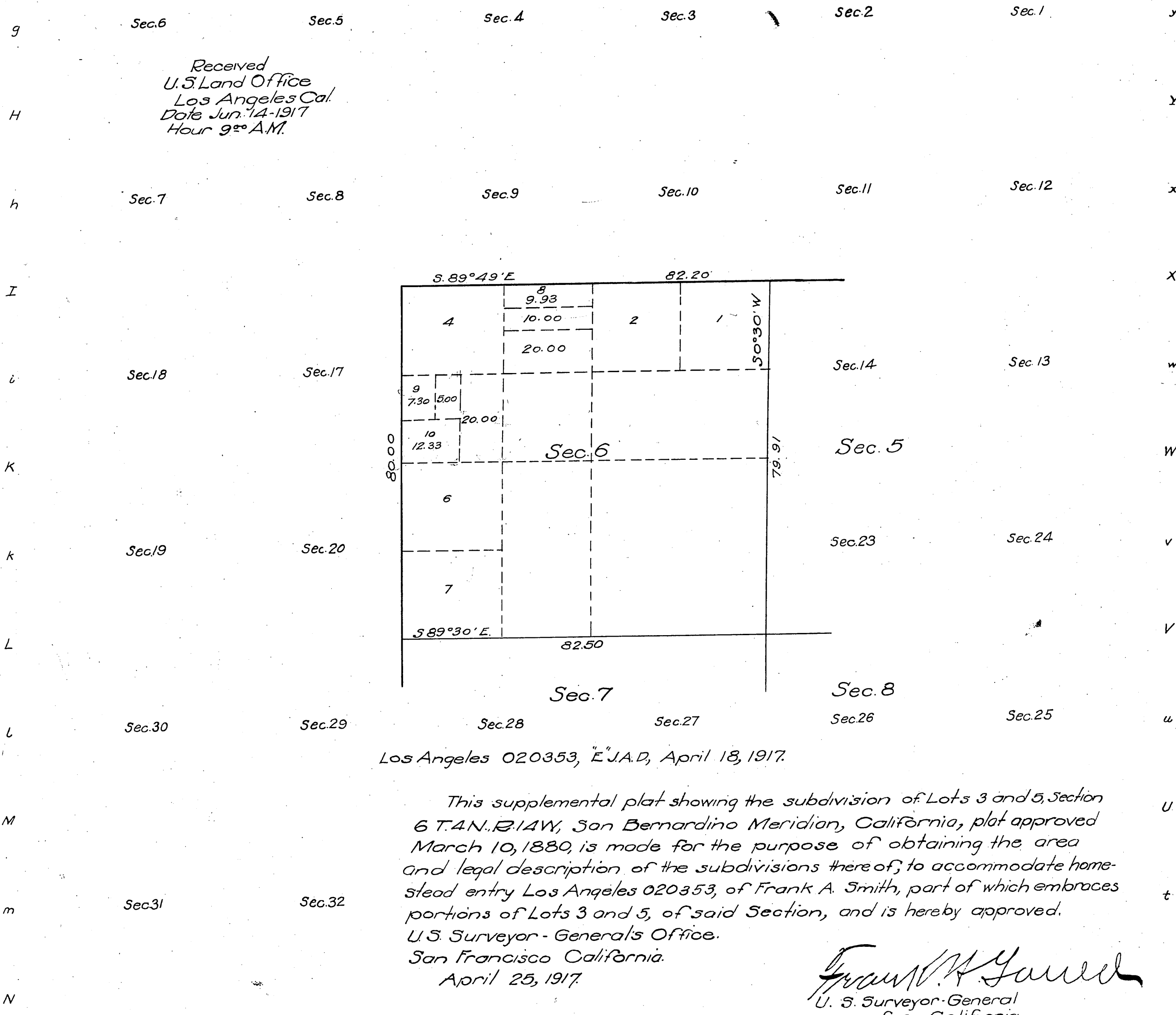
Scale 40 Chains to an inch
Mean Magnetic Declination

Surveys Designated	By Whom Surveyed	Contract		Amount of Surveys			When Surveyed	
		No.	Date	Mls.	chs.	lks.	Begun	Completed

The above map of Township No. _____ Range No. _____ of the _____ Meridian _____ is strictly conformable to the field notes of the survey thereof on file in this office, which have been examined and approved.
U. S. Surveyor-General's Office.
Surveyor-General.

Township N^o 4 North, *Supplemental Plat of Section 6,*
Range N^o 14 West, San Bernardino Meridian, California.

G F F e E d D c C b B a A
Scale: 20 chains = 1 inch.



Received
U.S. Land Office
Los Angeles Cal.
Date Jun. 14-1917
Hour 9^o A.M.

Filed U.S. Land Office
Los Angeles Cal.
June 14-1917
John D. Roche
Register

Los Angeles 020353, E.J.A.D, April 18, 1917.

This supplemental plat showing the subdivision of Lots 3 and 5, Section 6 T.4N. R.14W, San Bernardino Meridian, California, plat approved March 10, 1880, is made for the purpose of obtaining the area and legal description of the subdivisions thereof; to accommodate homestead entry Los Angeles 020353, of Frank A. Smith, part of which embraces portions of Lots 3 and 5, of said Section, and is hereby approved.
U.S. Surveyor - General's Office.
San Francisco California.
April 25, 1917.

Frank A. Yarrick
U. S. Surveyor-General
for California.

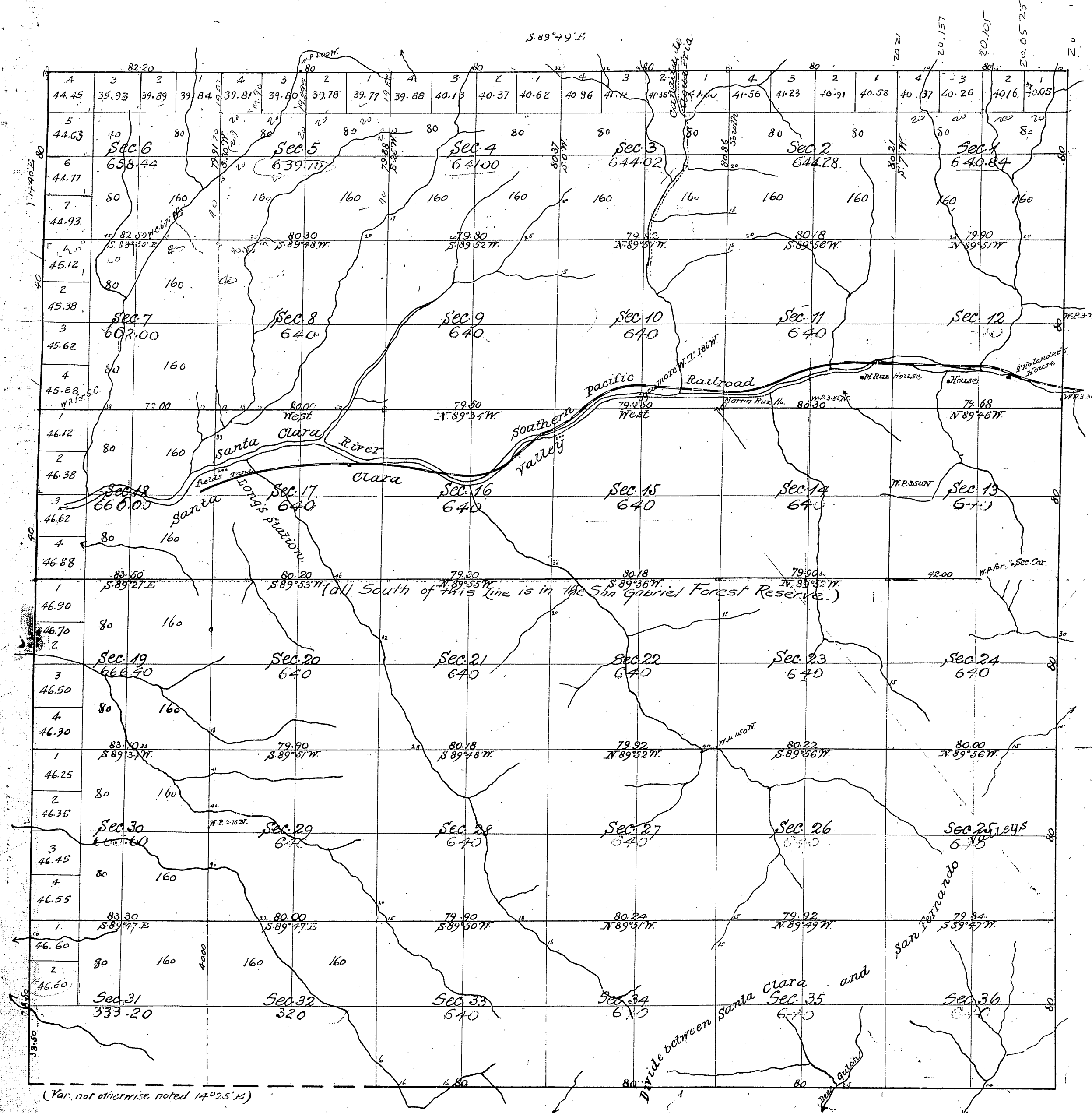
Areas in Acres	
Public Land	
Indian Reservation	
Indian Allotments	
Mineral Claims	
Water Surface	
Total Area	

Scale 40 Chains to an inch
Mean Magnetic Declination

The above map of Township N^o Range No. of the Meridian is strictly conformable to the fic. notes of the survey thereof on file in this office which have been examined and approved.
U.S. Surveyor General's Office

Surveyor General.

Surveys Designated	By Whom Surveyed	Contract		Amount of Survey			When Surveyed	
		No.	Date	Mis.	chs.	ks.	Begun	Completed



Field Notes
 C.S. 9051 - N Boundary
 C.S. 9052 - S. .. (E. 4 miles)
 E. side Sec. 32
 N .. 32.31
 C.S. 9053 - W .. 18
 E. W. ..
 Traverse La Solidaridad Pass to E.
 C.S. 9054 All interior Sec lines
 C.S. 9086 All of E. E. of Twp.
 C.S. 9043 W. Bdy. Twp.
 C.S. 9369 Por. W. Twp. Bdy.
 and E. & W. E of Twp. and
 E. line Sec. 16 and 13.
 Angeles Forest Reserve
 boundary - C.S. 9401
 C.S. 9440 - Sec. 5

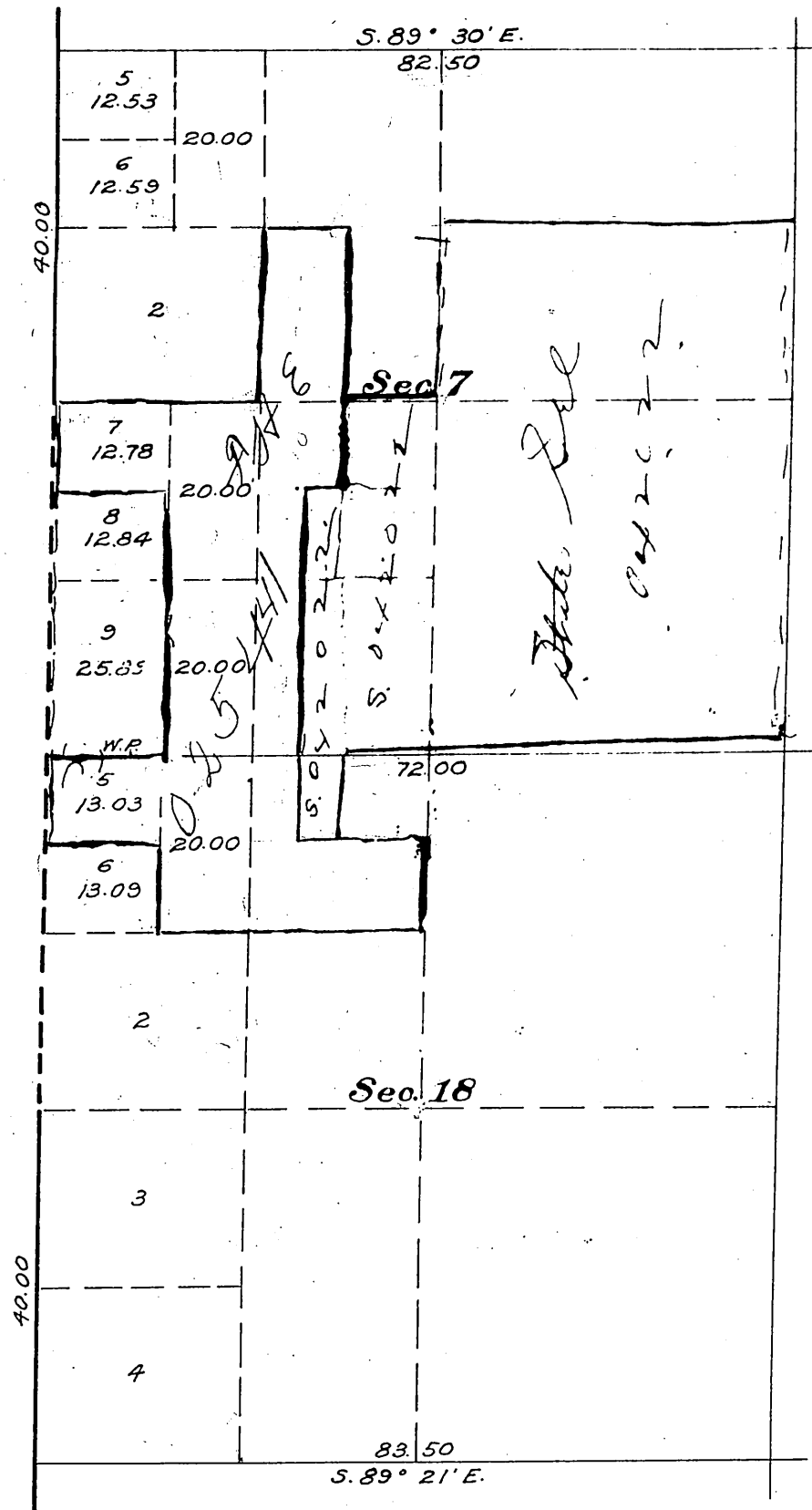
(All lines pass over mountainous land)

Surveys Designated	By whom surveyed	Date of Contract	Amount of Surveys	When surveyed
Township lines colored brown	Henry Hancock	February 15 th 1855		1855
West B ^{dy} of T. not colored	W. H. Norway	September 19 th 1876		1876
North, East & South B ^{dy} of T.		October 10 th 1879	16mils 2chs. 20lks.	1879
Section lines			59 . 6 . 31 .	November 19 th 1879

Aggregate Area of Public Lands Surveyed 22,541.84 acres
 Estimated " " Unsurveyed Lands 134.00 "
 Aggregate 23,175.84 "

Signed
 Theo. Wagner
 U.S. Surv. Genl. Cal.

Supplemental Plat of Sections 7 and 18,
Township N^o 4 North, Range N^o 14 West, San Bernardino Meridian, California



Authorization; letter Los Angeles 025441 "E" WJL dated June 18, 1924.

This supplemental plat, showing the subdivision of lots 1, 3 and 4, section 7, and lot 1, section 18, T. 4 N., R. 14 W., S.B.M., California, plat approved March 10, 1880, is made for the purpose of obtaining the area and legal description of the subdivisions thereof, to accommodate entry Los Angeles 025441 of Giaconio Perucca, which includes, with other lands, portions of above lots, and is hereby approved.

U.S. Surveyor General's Office,
San Francisco, California,
July 10, 1924.

J. H. Clover
U.S. Surveyor General for California.

Scale 20 chains to an inch.

Mean Magnetic Declination _____

Surveys Designated	By Whom Surveyed	Group		Amount of Surveys			When Surveyed	
		No.	Date	Mls.	chs.	lks.	Began	Completed

The above map of Township No. _____ Range No. _____ of the
Meridian _____ is strictly conformable to the field notes of the survey thereof on file
in this office, which have been examined and approved.

U.S. Surveyor General's Office.

Surveyor General.

